



ACEC *Missouri*

AMERICAN COUNCIL OF
ENGINEERING COMPANIES
of Missouri

2023-24 DIRECTORY

**Guide to the selection of ENGINEERING,
ARCHITECTURAL and LAND SURVEYING
services in Missouri**

At Your Service

AMERICAN COUNCIL OF ENGINEERING COMPANIES OF MISSOURI

Highly qualified and experienced design firms offering engineering, architectural and land surveying services to business, industry, and government are listed in this new Directory of the American Council of Engineering Companies of Missouri.

In every major area of the State and in every specialized field of design, our members stand ready to serve you whenever the need arises.

For the most current information of member firms, check out our website, www.acecmo.org, to use a searchable database.

Contact ACEC/MO or see our website for:

- ☐ membership information and an application
- ☐ up-to-date addresses and contacts for firms listed here or joined after publication
- ☐ easy-to-follow procedure for properly procuring engineering services

Contact us by Email for:

- ☐ address corrections for those receiving this Directory by mail
- ☐ addition to our mailing list to receive future Directories



**AMERICAN COUNCIL OF ENGINEERING COMPANIES
*of Missouri***

3432 W. Truman Boulevard, Suite 110
Jefferson City, MO 65109
(573) 634-4080

Website: www.acecmo.org

Morgan Mundell, President & CEO

ACEC/MO'S 2023-24 DIRECTORY OF MEMBER FIRMS

Published By

AMERICAN COUNCIL OF ENGINEERING COMPANIES OF MISSOURI

3432 W. Truman Boulevard, Suite 110

Jefferson City, MO 65109

Phone: (573) 634-4080

Website: www.acecmo.org



Morgan M. Mundell

President & CEO

Email: MorganMundell@acecmo.org



Dawn R. (Hill) Danison

Director of Operations

Email: DawnHill@acecmo.org

Mission Statement: The mission of the American Council of Engineering Companies of Missouri (ACEC/MO) is to promote the professional and business interests of its members.

Founding Member Organization of the

AMERICAN COUNCIL OF ENGINEERING COMPANIES

1400 L. Street, N.W., Suite 400

Washington, D.C. 20005

Phone: (202) 347-7474

FAX: (202) 898-0068

Website: www.acec.org

ACEC/MO Objectives Include . . .

Business Practices



Governmental Affairs



Public Affairs



INTRODUCTION TO CONSULTING ENGINEERING

The member firms of the American Council of Engineering Companies of Missouri (ACEC/MO) can be privately or publicly owned. Each must have one or more principals registered as professional engineers to practice engineering in the State of Missouri.

Those firms chartered as corporations must have certificates of authority from the Missouri Board for Architects, Professional Engineers, Land Surveyors and Landscape Architects to offer engineering, architectural, or land surveying services in Missouri.

Member firm representatives listed in this Directory serve as principals of the firm, authorized to and do

act for the firm on engineering policies. They may be professional engineers or other business professionals.

Distinguishing private practice consulting engineers from engineers in public agencies, industry and educational institutions is important. Consulting engineers provide independent judgment and service to multiple clients without obligation to special interests, organizational promotions, particular products or manufacturers. The consulting engineer serves the client directly, bringing expertise, technical ability, sound judgment and skill in his field of practice.



Owners and principals of professional design firms are member representatives at Council Meetings. These professional engineers or other business professionals help carry out the objectives of the Council: legislative/governmental affairs, business practices, public affairs, and organizational affairs.

TABLE OF CONTENTS

2023-24 Board of Directors	1
American Council of Engineering Companies of Missouri	
- Background	2
Past Presidents / Chairs	2
American Council of Engineering Companies	
- Background	3
ACEC Fellows	
- Missouri Engineers Who Have Been Recognized	3
Retired Life Members	3
Economic Impact	4
Council Statistics	4
2023 Engineering Excellence Awards	5-7
2023 Distinguished Service Awards	7
Life Member Awards	7
Design Engineering Services	
- What . . . When . . . Where . . . & How	8
Qualifications-Based Selection Method	9
ACEC Professional & Ethical Conduct Guidelines	10
2023-24 ACEC/MO Committee Charges	11
2023-24 ACEC/MO Committees	12
2023-24 ACEC/MO Liaison Committees	13
Geographical Index	14
Design Services Index	15-18
Listing of Member Representatives	
- alphabetical by firm principal	19-21
How to Use This Directory	22
Listing of Member Firms	
- alphabetical with complete data	23-40
Listing of Associate Members	
- alphabetical with complete data	41-42
QBS – The 3-Step Process	43

ACEC/MO 2023-24 BOARD OF DIRECTORS



Chair
Kevin L. Wallace, PE
 HNTB Corporation
 (816) 527-2400
kwallace@hntb.com



Chair-Elect
Robert A. Gilbert, PE
 Bartlett & West, Inc.
 (573) 634-3181
bob.gilbert@bartwest.com



Vice Chair
Stephen D. Hicks, PE
 S.H. Smith & Company, Inc.
 (573) 785-9621
steveh@shsmithco.com



Secretary/Treasurer
Shawwna L. Erter, PE
 SCI Engineering, Inc.
 (636) 757-1055
serter@sciengineering.com



Director (3rd Year)
Kristen Leathers-Gratton, PE
 Affinis Corp.
 (913) 239-1122
kleathers@affinis.us



Director (3rd Year)
Joel A. Weinhold, PE
 Geotechnology, Inc.
 (314) 997-7440
jweinhold@geotechnology.com



Director (2nd Year)
Howard N. Gotschall, PE
 Hanson Professional Services
 (314) 942-5285
hgotschall@hanson-inc.com



Director (2nd Year)
Kandi Spraggs, PE
 WSP USA Inc.
 (314) 206-4209
kandi.spraggs@usp.com



Director (1st Year)
Laura Mwirigi Rightler, PE
 Lochmueller Group, Inc.
 (314) 703-3986
Lrightler@lochgroup.com



Director (1st Year)
Steve J. Prange, PE
 Crawford, Murphy & Tilly, Inc.
 (417) 799-6253
sprange@cmtengr.com



National Director
Michael S. DeBacker, PE
 Burns & McDonnell
 (816) 349-6659
mdebacker@burnsmcd.com



Alt. National Director
Vicki S. LaRose, PE
 Civil Design, Inc.
 (314) 880-4424
vlarose@civildesigninc.com

ACEC/MO - AT A GLANCE

The American Council of Engineering Companies of Missouri, Inc., ACEC/MO, is an organization of professional engineering firms in private practice. Formed July 12, 1955 and incorporated under the laws of the State of Missouri, ACEC/MO, is a founding member organization of American Council of Engineering Companies (ACEC). The objectives of the organization as expressed in its Strategic Plan are:

- **BUSINESS AFFAIRS** - *Provide opportunities for member firms to advance their business practice of consulting engineering,*
- **PUBLIC AFFAIRS** - *Promote image and effectiveness of ACEC/MO and its member firms,*
- **GOVERNMENTAL AFFAIRS** - *Maintain a strong governmental affairs program,*
- **ORGANIZATIONAL AFFAIRS** - *Provide staff and organization that meets the long-term needs of the Council and its member firms.*

ACEC/MO promotes professional qualifications-based selection for design services. ACEC/MO provides

educational, professional, and insurance programs for its members and their employees.

ACEC/MO disseminates information explaining the professional principles and services of consulting engineers. It conveys to the general public the meaning of private professional engineering practice, and aims to develop understanding and appreciation of the scope and value of services provided by consulting engineers.

ACEC/MO publishes a directory of its members, which is made available to potential users of engineering services. **ACEC/MO's annual Engineering Excellence Awards** honor engineering achievements demonstrating the highest degree of merit and ingenuity. Winning Missouri projects are submitted to the ACEC national competition.

ACEC/MO has over 130 member and associate member firms, representing over 340 member firm principals and over 11,100 employees.

PAST PRESIDENTS

1956	Joe Williamson, Jr.	1982	John A. Boyd, Jr.	2008	Robert L. Goodwillie
1957	Hueston Smith	1983	Robert C. Flory	2009	David A. Diestelkamp
1958	Jack Harvie	1984	Samuel Wolfenbarger	2010	Phillip E. Borrowman
1959	Fusz Thatcher	1985	George M. Sallwasser	2011	Edmond D. Alizadeh
1960	Louis Hamig	1986	Robert G. Wade	2012	Daniel M. Wilson
1961	Wil Rath	1987	Edward Edgerley, Jr.	2013	Thomas R. Gredell
1962	Edward Dabler	1988	Robert G. Crabtree	2014	Linda L. Moen
1963	Clyde S. Hale	1989	William L. Durbin	2015	Gene R. Hinshaw
1964	Donald K. Ross	1990	Gordon R. Pennington	2016	Daniel R. Meckes
1965	Willard W. Given	1991	Theodore J. Cambern, Jr.	2017	Michael S. DeBacker
1966	Charles H. Zurheide	1992	Paul J. Marshall	2018	Joseph G. Hagerty
1967	Brice R. Smith, Jr.	1993	H. Jerome Butler	2019	Stephen R. Wells
1968	Charles W. Keller	1994	Leonard C. Kirberg	2020	Vicki S. LaRose
1969	Dean R. Felton	1995	Laurence T. Schaper	2021	Timothy J. Ross
1970	Clarence C. Palmer	1996	Michael A. Postiglione	2022	Buddy D. Desai
1971	Willard W. Given	1997	Edward J. Mulcahy		
1972	William G. Riddle	1998	James K. Van Buren		
1973	D. W. Ryckman	1999	Dave G. Ruf, Jr.		
1974	William A. Herrmann	2000	Edmund C. Johnson		
1975	James E. Moulder	2001	G. Kelley Gipple		
1976	John H. Robinson	2002	Robert E. Polk, Jr.		
1977	Erwin R. Breihan	2003	Kevin R. Eisenbeis		
1978	Donald M. Duncan	2004	Marc H. Alper		
1979	Richard E. Beumer	2005	David E. Hamilton		
1980	David H. Lillard	2006	Scott M. Smith		
1981	Albert Alper	2007	John R. Sonderman		

ACEC

The American Council of Engineering Companies, (ACEC), 1015 15th Street, N.W, Suite 802, Washington, D.C. 20005, Phone: 202-347-7474, is the national organization of engineers engaged in the practice of engineering. It is made up of 52 Member Organizations of which ACEC/MO is one.

ACEC is devoted to the advancement of the practice of engineering, to the promotion of private enterprise and to the improvement of the business environment of professional engineers engaged in engineering.

ACEC is the source of information and cooperative services for common purposes and benefits to all members in the various branches of engineering.

It works for maintenance of the highest ethical standards and speaks for engineers throughout the United States. ACEC disseminates information explaining the services and value of engineers to other professional organizations, business, government, and the public.

ACEC now has over 5,000 member firms, with more than 600,000 engineers, architects, land surveyors, and other specialists.

ACEC/MO members have actively served and continue to serve the national organization in several capacities such as trustees of the ACEC insurance program, as national officers, and as chairman and members of ACEC committees.

ACEC FELLOWS

The American Council of Engineering Companies is proud to recognize the following Missouri engineers who have been recognized by ACEC as Fellows. The Fellows program gives recognition to engineers who have made notable contributions to the profession of engineering.

Edmond D. Alizadeh
Reginald H. Benton
Mary Erchul
Mark A. Harms

Michael D. Klingner
* David H. Lillard
Daniel R. Meckes
* Edward J. Mulcahy

Clinton O. Robinson
* Donald K. Ross

* Life Fellow

ACEC/MO RETIRED-LIFE MEMBERS

ACEC/MO Life Members who are fully retired from private practice engineering.

Phillip E. Borrowman, PE
John R. Boyd, Jr., PE
Steven L. Brady, PE
Theodore J. Cambern, Jr., PE
Richard J. Cammarata, PE
Joel A. Cerwick, PE
Edward R. Dabler, PE
Jack L. Eason, PE

James L. Foil, PE
Joseph G. Hagerty
Gene R. Hinshaw, PE
Edmund C. Johnson, PE
Philip A. Jozwiak, PE
George Kern, PE
Louis Krasner, PE
Paul J. Marshall, PE

E.J. Peltier, PE
Lester W. Penn, Jr., PE
Robert E. Polk, Jr.
George M. Sallwasser, PE
Laurence T. Schaper, PE
Scott M. Smith, PE
James K. Van Buren, PE

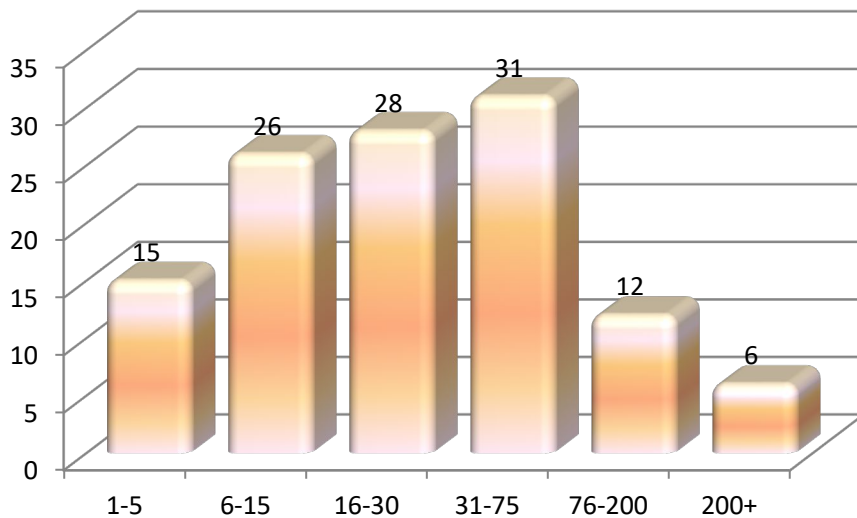
ECONOMIC IMPACT

National Leadership

Four of the top 100 professional design firms are ACEC/MO members who have their worldwide headquarters in Missouri. In addition, 43

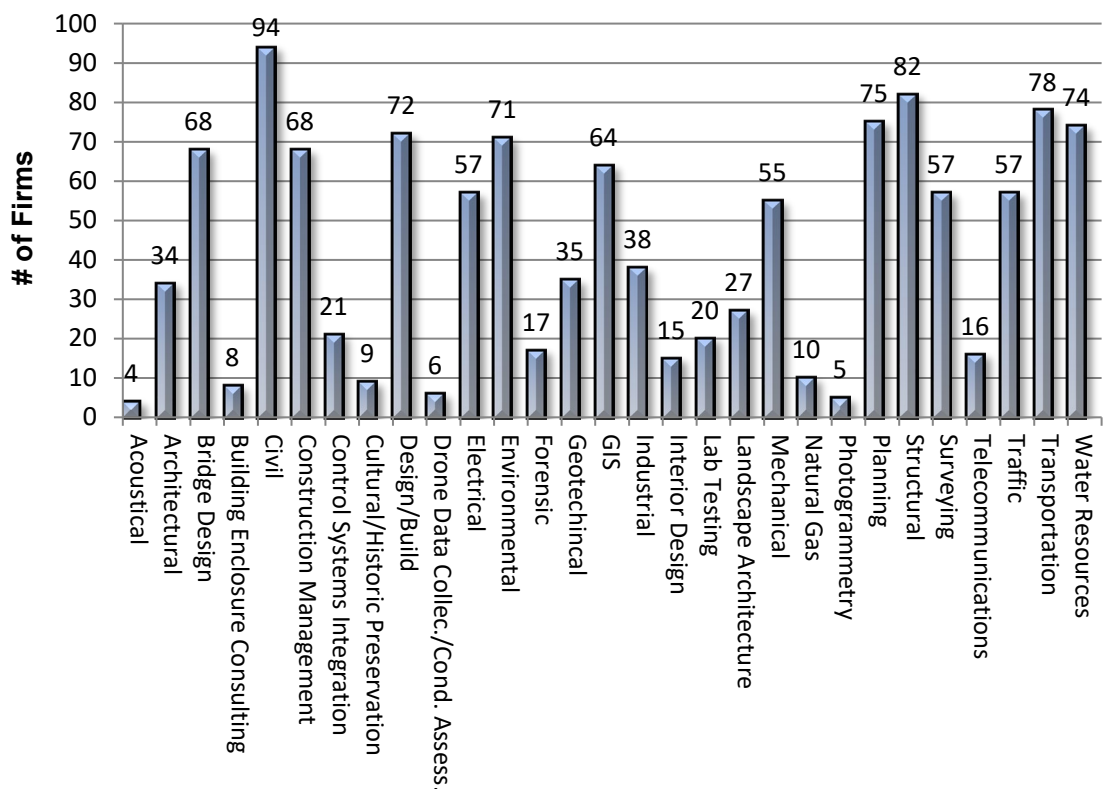
ACEC/MO firm offices are headquartered or are branches of firms ranked among the top 500 design firms in the nation according to Engineering News-Record.

COUNCIL STATISTICS



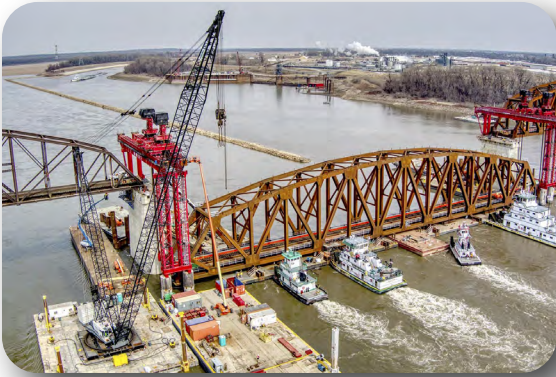
Profile of ACEC/MO Firms - FIRM SIZE IN MISSOURI

Profile of ACEC/MO Firms - SERVICES OFFERED



2023 ENGINEERING EXCELLENCE AWARDS

Engineering Excellence Awards honor engineering achievements that demonstrate the highest degree of merit and ingenuity and provide a major contribution to technical, economic, or social advancement. An eminent panel of judges from outside the membership chose the 2023 winning projects from entries submitted across the state. Five of the top entries went on to compete at the American Council of Engineering Companies (ACEC) competition in Washington, D.C.



Grand Conceptor Award

TranSystems

Project: Merchants Bridge Main Span Trusses &
East Approach Replacement

Client/Owner: Terminal Railroad Association of St. Louis

Grand Awards

Burns & McDonnell

Project: South/Central Terminal Baggage Handling Program
Client/Owner: Miami-Dade Aviation Department

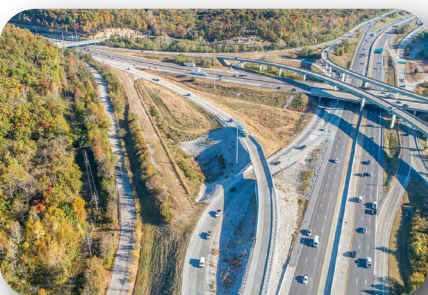


EFK Moen, LLC

Project: MSD HQ Sustainable Entrance Improvements
Client/Owner: Metropolitan St. Louis Sewer District

Horner & Shifrin, Inc.

Project: Oglesby Park
Client/Owner: St. Charles County Parks & Recreation



Jacobs Engineering Group Inc.

Project: I-44 Over Meramec River and I-270 Interchange Improvements
Client/Owner: Missouri Department of Transportation

2023 ENGINEERING EXCELLENCE AWARDS

Walter P Moore and Associates, Inc.

Project: GEODIS Park
Client/Owner: Nashville SC/Walsh Management, LLC



Honor Awards

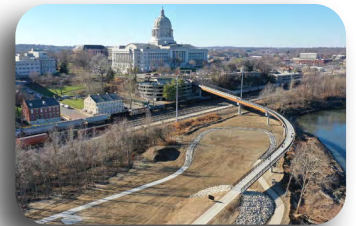


ABNA Engineering, Inc.

Project: Ameren Access Bridge Structure
Client/Owner: Ameren Missouri

Bartlett & West, Inc.

Project: Bicentennial Bridge to Adrian's Island
Client/Owner: City of Jefferson City, Missouri

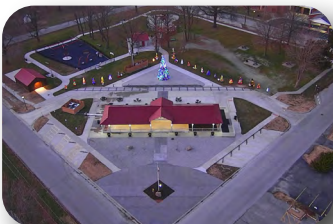
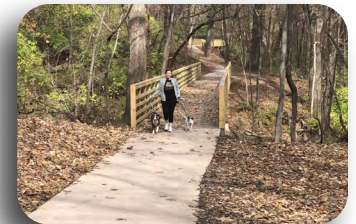


Bartlett & West, Inc.

Project: I-49 Missouri-Arkansas Connector (Bella Vista Bypass)
Client/Owner: Missouri Department of Transportation

CFS Engineers

Project: Briarcliff Greenway Trail
Client/Owner: City of Kansas City, Missouri Parks & Recreation

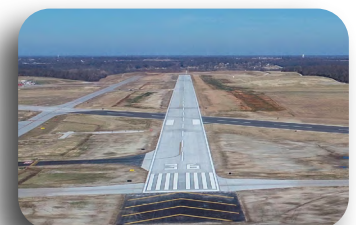


CFS Engineers

Project: T.B. Hanna Station
Client/Owner: City of Raymore, Missouri Parks & Recreation

Crawford, Murphy & Tilly, Inc.

Project: Joplin Regional Airport Runway 18/36 Reconstruction
Client/Owner: City of Joplin, MO



2023 ENGINEERING EXCELLENCE AWARDS



Crawford, Murphy & Tilly, Inc.

Project: Route 160 Safety & Capacity Improvements
Client/Owner: Missouri Department of Transportation

Lochmueller Group, Inc.

Project: North Lafayette Street Reconstruction for the City of Florissant
Client/Owner: City of Florissant



Oates Associates, Inc.

Project: Lake Saint Louis Boulevard Roundabout
Client/Owner: City of Lake St. Louis, Missouri

2023 DISTINGUISHED SERVICE AWARDS

This award recognizes the member firms at their 25th year of business and thereafter at 10 year intervals, with special recognition for their 50th & 100th anniversary. The Distinguished Service Award recipients for 2023 are listed below.

CBB

50 Years of Service



EDM Incorporated

50 Years of Service



EFK Moen, LLC

25 Years of Service



S.H. Smith & Company, Inc.

55 Years of Service



SCI Engineering, Inc.

45 Years of Service



Taliaferro & Browne, Inc.

55 Years of Service



Taliaferro & Browne

DESIGN ENGINEERING SERVICES

◆ WHAT the Design Engineering Firm Offers You

The engineering firm can offer:

- preliminary planning and feasibility studies
- engineering and architectural design
- evaluation and award of construction contracts
- general coordination of construction projects.

The types of projects which a consulting engineering firm may be called on to design include:

- | | |
|-------------------------------|--|
| * highways | * flood control |
| * bridges | * sewage disposal |
| * airports | * water treatment |
| * terminal facilities | * refuse disposal |
| * water resources development | * subsurface soil testing |
| * water supply | * engineering for buildings of many kinds -- |

factories, plants, warehouses, mills, power plants, banks, hospitals, churches, schools, offices, apartments, shopping centers, sports stadiums, hotels, and many others.

◆ WHEN Do You Need Design Engineering Services

An engineering firm is retained whenever a client desires specialized knowledge, unbiased and independent engineering judgment, broad experience and the application of modern engineering techniques and practice. The firm is available when an engineering staff does not exist in-house, or when the existing engineering staff is inadequate, or lacks competence in a specific area. Above all, an engineering firm provides its services on an "as needed" basis, which assures overall efficiency, economy and quality. The engineering firm may work for government, commercial or industrial clients directly or as part of a design team.

◆ HOW Do You Select a Design Engineering Firm

The dominant factor in the selection of an engineering firm is its qualifications to solve the problems under consideration. The qualifications are a reflection of the firm's:

- * experience
- * staff and facilities
- * integrity and reputation
- * concept of the project

- * knowledge of local conditions.

For the State of Missouri and its political subdivisions, the selection of engineers is governed by RSMo Section 8.285 to 8.291 which is reprinted on the next page. This act also provides an excellent guideline for selection by other potential clients. These qualifications-based selection procedures are spelled out in more detail in the publication, "**QBS Manual, a Public Owner's Design Services Workbook Outlining a Step-by-Step Process for Selecting Design Professional Services**", which is available free from ACEC/MO. We also have another publication available, "**QBS - A Guide to Proper Selection Procedures.**"



◆ METHODS of Payment for Design Engineering Services

Five common methods of payment for engineering services are:

- * percentage of the construction cost of the project
- * a fixed lump sum
- * straight time charges
- * fixed lump sum plus expenses
- * retainer on an annual or other basis.

Selection of an engineering firm based upon the lowest price (bid basis) is not a true measure of the worth of professional services because it does not consider education, technical knowledge, experience, and imagination and ingenuity of the consulting engineer. These factors have far more influence on the total construction and operating cost of a project -- than the initial cost of engineering.

◆ WHERE to Find a Qualified Design Engineering Firm

Qualified design engineering firms located in the State of Missouri can be selected from those listed in this roster, all of which are members of ACEC/MO. Our office can help you find firms qualified for your project. Call 573-634-4080. The complete list is also available on our website at www.acecmo.org. A national directory comprised of over 5,000 design firms in all 52 states is available from ACEC's website at www.acec.org.

QUALIFICATIONS-BASED SELECTION METHOD

The following is Missouri Law (RSMo Section 8.285 to 8.291) regarding the procurement of professional design services and its purpose to ensure that the State and its political subdivisions receive the most competent professional services available, based on demonstrated qualifications for the type of services required. Federal law reflects the same procedure and ACEC/MO recommends this procedure to any potential user of design services.

8.285. Policy on contracts for architectural engineering, land surveying services. -- It shall be the policy of the state of Missouri and political subdivisions of the state of Missouri to negotiate contracts for architectural, engineering and land surveying services on the basis of demonstrated competence and qualifications for the type of services required and at fair and reasonable prices.

8.287. Definitions. -- As used in sections 8.285 to 8.291 unless the context specifically requires otherwise:

(1) **"Agency"** means each agency of the state and each agency of a political subdivision thereof authorized to contract for architectural, engineering and land surveying services;

(2) **"Architectural services"** means any service as defined in section 327.091, RSMo;

(3) **"Engineering services"** means any service as defined in section 327.181, RSMo;

(4) **"Firm"** means any individual, firm, partnership, corporation, association or other legal entity permitted by law to practice the profession of architecture, engineering or land surveying and provide said services;

(5) **"Land surveying services"** means any service as defined in section 327.272, RSMo;

(6) **"Project"** means any capitol improvement project or any study, plan, survey or program activity of a state agency or political subdivision thereof, including development of new or existing programs.

8.289. Agencies using services to be furnished statement of firm's qualifications and performance data. -- Present provisions of law notwithstanding, in the procurement of architectural, engineering or land surveying services, each agency which utilizes architectural, engineering or land surveying services shall encourage firms engaged in the lawful practice of their professions to annually submit a statement of qualifications and performance data to the agency. Whenever a project requiring architectural, engineering or land surveying services is proposed for an agency of the state or political subdivision thereof, the agency shall evaluate current statements of qualifications and performance data of firms on file together with those that may be submitted by other firms regarding the proposed project. In evaluating the

qualifications of each firm, the agency shall use the following criteria:

(1) The specialized experience and technical competence of the firm with respect to the type of services required;

(2) The capacity and capability of the firm to perform the work in question, including specialized services, within the time limitations fixed for the completion of the project;

(3) The past record of performance of the firm with respect to such factors as control of costs, quality of work, and ability to meet schedules;

(4) The firm's proximity to and familiarity with the area in which the project is located.

8.291. Negotiation for contract -- not applicable, for certain political subdivisions. --

1. The agency shall list three highly qualified firms. The agency shall then select the firm considered best qualified and capable of performing the desired work and negotiate a contract for the project with the firm selected.

2. For a basis for negotiations the agency shall prepare a written description of the scope of the proposed services.

3. If the agency is unable to negotiate a satisfactory contract with the firm selected, negotiations with that firm shall be terminated. The agency shall then undertake negotiations with another of the qualified firms selected. If there is a failing of accord with the second firm, negotiations with such firm shall be terminated. The agency shall then undertake negotiations with the third qualified firm.

4. If the agency is unable to negotiate a contract with any of the selected firms, the agency shall re-evaluate the necessary architectural, engineering or land surveying services, including the scope and reasonable fee requirements, again compile a list of qualified firms and proceed in accordance with the provisions of sections 8.285 to 8.291.

5. The provisions of sections 8.285 to 8.291 shall not apply to any political subdivision which adopts a **qualification-based selection** procedure **commensurate with state policy** for the procurement of architectural, engineering and land surveying services.

ACEC PROFESSIONAL & ETHICAL CONDUCT GUIDELINES

PREAMBLE

Consulting engineering is an important and learned profession. The members of the profession recognize that their work has a direct and vital impact on the quality of life for all people. Accordingly, the services provided by consulting engineers require honesty, impartiality, fairness and equity and must be dedicated to the protection of public health, safety and welfare. In the practice of their profession, consulting engineers must perform under a standard of professional behavior which requires adherence to the highest principles of ethical conduct on behalf of the public, clients, employees and the profession.

I. Fundamental Canons

Consulting engineers, in the fulfillment of their professional duties, shall:

1. Hold paramount the safety, health and welfare of the public in the performance of their professional duties.
2. Perform services only in areas of their competence.
3. Issue public statements only in an objective and truthful manner.
4. Act in professional matters for each client as faithful agents or trustees.
5. Avoid improper solicitation of professional assignments.

II. Rules of Practice

1. Consulting engineers shall hold paramount the safety, health and welfare of the public in the performance of their professional duties.
 - a. Consulting engineers shall at all times recognize that their primary obligation is to protect the safety, health, property and welfare of the public. If their professional judgment is overruled under circumstances where the safety, health, property or welfare of the public are endangered, they shall notify their client and such other authority as may be appropriate.
 - b. Consulting engineers shall approve only engineering work which, to the best of their knowledge and belief, is safe for public health, property and welfare and in conformity with accepted standards.
 - c. Consulting engineers shall not reveal facts, data or information obtained in a professional capacity without the prior consent of the client except as authorized or required by law or these Guidelines.
 - d. Consulting engineers shall not permit the use of their name or firm nor associate in business ventures with any person or firm which they have reason to believe is engaging in fraudulent or dishonest business or professional practices.
 - e. Consulting engineers having knowledge of any alleged violation of these Guidelines shall cooperate with the proper authorities in furnishing such information or assistance as may be required.
2. Consulting engineers shall perform services only in the areas of their competence.
 - a. Consulting engineers shall undertake assignments only when qualified by education or experience in the specific technical fields involved.
 - b. Consulting engineers shall not affix their signatures to any plans or documents dealing with subject matter in which they lack competence nor to any plan or document not prepared under their direction and control.
 - c. Consulting engineers may accept an assignment outside of their fields of competence to the extent that their services are restricted to those phases of the project in which they are qualified and to the extent that they are satisfied that all other phases of such project will be performed by registered or otherwise qualified associates, consultants or employees, in which case they may then sign the documents for the total project.
3. Consulting engineers shall issue public statements only in an objective and truthful manner.
 - a. Consulting engineers shall be objective and truthful in professional reports, statements or testimony. They shall include all relevant and pertinent information in such reports, statements or testimony.
 - b. Consulting engineers may express publicly a professional opinion on technical subjects only when that opinion is founded upon adequate knowledge of the facts and competence in the subject matter.

- c. Consulting engineers shall issue no statements, criticisms, or arguments on technical matters which are inspired or paid for by interested parties, unless they have prefaced their comments by explicitly identifying the interested parties on whose behalf they are speaking and by revealing the existence of any interest they may have in the matters.
4. Consulting engineers shall act in professional matters for each client as faithful agents or trustees.
 - a. Consulting engineers shall disclose all known or potential conflicts of interest to their clients by promptly informing them of any business association, interest or other circumstances which could influence or appear to influence their judgment or the quality of their services.
 - b. Consulting engineers shall not accept compensation, financial or otherwise, from more than one party for services on the same project, or for services pertaining to the same project, unless the circumstances are fully disclosed to, and agreed to, by all interested parties.
 - c. Consulting engineers in public service as members of a governmental body or department shall not participate in decisions with respect to professional services solicited or provided by them on their organizations in private engineering practices.
 - d. Consulting engineers shall not solicit or accept a professional contract from a governmental body on which a principal or officer of their organization services as a member.
5. Consulting engineers shall avoid improper solicitation of professional assignments.
 - a. Consulting engineers shall not falsify or permit misrepresentation of their, or their associates', academic or professional qualifications. They shall not misrepresent or exaggerate their degree of responsibility in or for the subject matter of prior assignments. Brochures or other presentations incident to the solicitation of assignments shall not misrepresent pertinent facts concerning employees, associates, joint ventures or past accomplishments with the intent and purpose of enhancing their qualifications and their work.
 - b. Consulting engineers shall not offer, give, solicit or receive, either directly or indirectly, any political contribution in an amount intended to influence the award of a contract by public authority, or which may be reasonably construed by the public of having the effect or intent to influence the award of the contract. They shall not offer any gift or other valuable consideration in order to secure work. They shall not pay a commission, percentage or brokerage fee in order to secure work except to a bona fide employee or bona fide established commercial or marketing agencies retained by them.

Adopted October 1980

Special Note:

These guidelines do not prohibit design competitions, free services, or contingent arrangements.

2023-24 ACEC/MO COMMITTEE CHARGES

Advisory - This Committee is charged with recommending actions and compensation for the staff, preparing an annual list of nominees for election to the various Board positions required by the Bylaws, recommending Council actions in regards to registration and ethical issues, and identifying individuals for the distinguished service awards including Fellows, Life Members, and New Principals.

Budget & Finance - This Committee shall study fiscal direction and maintain fiscal integrity for the Council's long-term health in accordance with the Bylaws. The members of this committee shall annually prepare a Council budget recommendation for the coming year.

Business Practices / Programs - This Committee is responsible for addressing common business issues such as insurance, risk management, business management, contract documents, peer review, software, and other items that advance the business practice of member firms. This Committee shall, in cooperation with the President and other Committees, assist in preparing a calendar of meetings/seminars for the year, including stand-alone and those in conjunction with a regular ACEC/MO quarterly meeting, select program topics and suggest possible speakers.

Bylaws - This Committee shall prepare revisions to the Bylaws when and as necessary to reflect changes in the Council. *(WILL APPOINT AS NEEDED)*

Diversity - This Committee shall foster diversity within our member companies; help our member firms encourage minority and woman employment while meeting legal and risk management requirements; and assist in the development of an educational and support infrastructure to encourage minority and woman careers in STEM fields.

Engineering Excellence - This Committee is charged with the responsibility of establishing criteria for the annual project awards competitions, selecting the date and judges for the competition judging, attend the judging and determine the winners from judging scores. Also, they will help in the presentation of awards at the Awards Banquet. Shall see that appropriate winning entries are sent on to the national competition in a timely manner.

Environmental - This Committee shall report to the Council and/or Governmental Affairs Committee its appraisals of and its reactions to important governmental and private sector activities and legislation in which any combination of energy, environmental and economic subjects interact.

Future Leaders - The Committee shall assist ACEC/MO staff with speakers and programs for the annual Future Leaders Academy; and assist in getting registrants for the program if necessary.

Governmental Affairs - This Committee shall develop and recommend to the Council a current and long-term legislative program. Committee members shall work to get Council priorities into the legislative process, review other pending state legislation at the state level and participate in the legislative process to promote Council priorities and defeat adverse legislation. They shall keep the Council informed on pending legislation. The Committee shall be in charge of the Council's participation in state legislative functions and shall represent the Council at meetings with other organizations concerning legislation.

Long Range Planning - This Committee is charged with reviewing the long-range plan on an annual basis and recommending revisions when and as necessary to reflect changes in the Council.

Membership - This Committee is responsible for recruiting new member firms, analyzing membership trends, developing an annual membership recruitment/retention plan, and implementing a program for new firm orientation.

PAC - This is a group of six Trustees appointed for 3-year terms, with responsibility for seeking annual participation from members, evaluating political candidates, and recommending support. Two Trustees are appointed each year and must be contributors to the ACECMO/PAC.

Professional Procurement - This Committee shall develop an action plan for promoting proper qualifications-based selection of engineering services under Missouri law, identify violators of proper selection procedures, and develop strategies for response. The Committee shall develop ways to recognize those clients who support proper qualifications-based selection procedures with an Annual Award.

Public Relations - This Committee shall give guidance to all Council public relations activities and internal communications programs. *(WILL APPOINT AS NEEDED)*

Transportation - This Committee shall monitor legislation, regulations and other activities and programs in the transportation fields, including highways, railroads, aviation and mass transit and recommend Council positions on appropriate issues.

Vertical Construction (formerly Interprofessional) - This Committee shall develop and conduct programs to serve the needs of member firms engaged in professional design practice where other consulting engineers, architects, and other design/construction professionals are the client. *(WILL APPOINT AS NEEDED)*

2023-24 ACEC/MO COMMITTEES

Advisory

Buddy Desai, Chair; Mike DeBacker; Dave Diestelkamp; Tom Gredell; Vicki LaRose; Dan Meckes; Linda Moen; Steve Wells

Budget & Finance

Shawna Erter, Chair; Buddy Desai; Bob Gilbert; Tom Gredell; Steve Hicks; Vicki LaRose; Dan Meckes; Linda Moen; Kevin Wallace; Steve Wells

Business Practices / Programs

Todd Welz, Chair; Abe Adewale; Nicole Adewale; Marc Alper; Ben Asnicar; Neil Brady; Margaret Bruns; Bruce Dawson; Kate Dirks Canton; Chris Harker; Garrett Hummel; John Huss; Lorne Jackson; Mark Jansen; Tim Jardine; Ross Kasmann; Vicki LaRose; Chris Linneman; Brad Loomis; David Maxwell; Mark McFarland; Julie McNiff; Marjorie Melton; Linda Moen; Greg O'Connor; Tony O'Malley; Erin Parrish; Michael Puro; Kimberly Robinett; Tim Ross; Jack Schaller; Dick Scott; Sam Tapko; Nick Thomas; Srinu Yanamanamanda

Diversity

Tawn Nugent, Co-Chair; Scott Perkins, Co-Chair; Abe Adewale; Tricia Bohler; Colleen Connor; Kelley Davis; Bruce Dawson; Buddy Desai; Darrell Eilers; David Ford; Shari Frank; Tirzah Gregory; Earl Harrison; Vicki LaRose; Brad Loomis; Marjorie Melton; Linda Moen; Kimberly Robinett; Anne Schroer; Vernal Stewart; Jessi Terri; Lorenzo Thompson; Barb Wells; Mike Wild; Srinu Yanamanamanda; Pouya Yousefzadehfard

Engineering Excellence

Rob Krewson, Co-Chair; Andrew Potthast, Co-Chair; Marc Alper; Rick Bennett; Nikki Conley; Kelley Davis; Buddy Desai; Michele Keal; Kevin Kriete; Tawn Nugent; Steve Prange; Breck Washam; John Zimmermann

Environmental

Rob Morrison, Co-Chair; Laura Mwirigi Rightler, Co-Chair; Nicole Adewale; Mike Alexander; Ed Alizadeh; Elke Boyd; Kakeesha Branigan; Mark Bross; Chris Burns; Anika Careaga; Suzanne Carpenter; Steve Coates; Kim Cole; Colleen Connor; Todd Dablemont; James Dutt; Andrew Eckhart; Sarah Finley; A.J. Gironde; Laura Gray; Tom Gredell; Ed Grimmer; Mike Hall; Lindsey Henry; Steve Hicks; Lacey Hirschvogel; Josiah Holst; Rebecca Howley; Steve Jackson; Eric Karch; John Killips; Maria King; Justin Klaut; Kyle Kroner; Vicki LaRose; Jim McCleish; Darren Mitchell; Randy Norris; Tony O'Malley; Bob Orr; Gary Pendergrass; Greg Perkins; Brian Porter; Tim Redel; Karen Rieken; Jack Schaller; Cassie Schmidt; Ryan Vraa; Wayne Weber; Christy Willson

Future Leaders

Jason Dohrmann, Co-Chair; Anne Schroer, Co-Chair; Brett Brooks; Shawna Erter; Kevin Heffern; Nathan Hladky; J.R. Landeck; David Maxwell; Tony O'Malley; Laura Mwirigi Rightler; Brad Schleeter; Joe Sturgeon; Dave Yates; Pouya Yousefzadehfard

Governmental Affairs

Bob Gilbert, Co-Chair; Michelle Kratzer, Co-Chair; Abe Adewale; Ed Alizadeh; Marc Alper; Becky Baltz; Rick Bennett; Elke Boyd; Ozzy Bravo; Steve Bubanovich; Mike DeBacker; Buddy Desai; Dave Diestelkamp; Steve Donahue; Jay Ellington; Corey Fischer; Howard Gotschall; Mike Hall; Kevin Heffern; Steve Hicks; Pam Hobbs; Greg Horn; Gretchen Ivy; Carrera Kauszler; John Killips; Vicki LaRose; Shawn Leight; Chris Linneman; Judy Macoubrie; David Maxwell; Tony McGaughy; Jeremy McNutt; Dan Meckes; Ron Mersch; Linda Moen; Rob Morrison; Agnes Otto; Erin Parrish; Gary Pendergrass; Andrew Potthast; Michael Puro; Steve Prange; Jared Rasmussen; Jeff Rensing; Kimberly Robinett; Mike Spayd; Sam Tapko; Chip Touzinsky; Ryan Vraa; Kevin Wallace; Steve Wells; Todd Welz; Mike Wild; Dale Williams; Sabin Yanez

Long Range Planning

Bob Gilbert, Chair; Steve Hicks, Vice-Chair; Neil Brady; Mike DeBacker; Mike Erdtmann; Shawna Erter; Howard Gotschall; Kristen Leathers-Gratton; Chris Linneman; ; Linda Moen; Bob Orr; Tim Ross; Adam Rutz; Vernal Stewart; Kevin Wallace; Sabin Yanez

Membership

Kelley Davis, Co-Chair; Steve Prange, Co-Chair; Ben Asnicar; Tricia Bohler; Joe Drimmel; Chip Touzinsky; Steve Wells; Todd Welz

Political Action Committee Trustees (PAC)

Joel Weinhold, Chair (T.E. 6/30/24); Kristen Leathers-Gratton (T.E. 6/30/24); Howard Gotschall (T.E. 6/30/25); Chip Touzinsky (T.E. 6/30/25); Laura Mwirigi Rightler (T.E. 6/30/26); Steve Prange (T.E. 6/30/26)

Professional Procurement

Michelle Mahoney, Chair; Ben Asnicar; Linda Billingsly; Heidi Eilers; Jay Ellington; Leonard Graham; Lorne Jackson; Ross Kasmann; Pat Kinsella; Tawn Nugent; Bob Orr; Jeff Rensing; Bill Robison; Tim Ross; Anne Schroer; Dick Scott; Cole Shippy; Sam Tapko; Ronnie Williams; John Zimmermann

Transportation

Heidi Eilers, Co-Chair; Chris Linneman, Co-Chair; Justin Adams; Abe Adewale; Ed Alizadeh; Ramin Ashrazaadeh; Ben Asnicar; Mike Banashek; Eric Barnes; Tim Barrett; Rick Bennett; Gino Bernardez; Blake Blakemore; Tricia Bohler; Ozzy Bravo; Brett Brooks; Dan Brown; Mike Brown; Timothy Broyles; Margaret Bruns; Jeff Bryan; Mike Busch; Michael Carroll; Reid Catt; Jim Cherney; Steve Coates; Nikki Conely; Greg Cook; Nick Correnti; Jason Davis; Dan DeArmond ; Mike DeBacker ; Buddy Desai; Dave Diestelkamp; Jason Dohrmann; Steve Donahue; Brian Eads; Andrew Eckhart; Darrell Eilers; Kevin Eisenbeis; Mike Erdtmann; Bob Gilbert; Howard Gotschall; Leonard Graham; Mark Grossenbacher; Ryan Hagerty; Chris Harker; Scott Heavin; Diane Heckemeyer; Kevin Heffern; Mike Herleth; Steve Hicks; Nathan Hladky; Pam Hobbs; Greg Horn; Garrett Hummel; Cory Imhoff; Gretchen Ivy; Lorne Jackson; Steve Jackson; Jarrett Jasper; Matt Johnson; Carrera Kauszler; Michele Keal; Steve Kellerman; Todd Kempker; Pat Kinsella; Aaron Kober; Michelle Kratzer; Rob Krewson; Lou Kuelker; J.R. Landeck; Vicki LaRose; Nathan Leach; Kristen Leathers-Gratton; Shawn Leight; Brad Loomis; Sean Matlock; David Maxwell; Scott McDonald; Mike McKenna; Jeff McKerrrow; Jeremy McNutt; Matt McQuality; Aaron McVicker; Dan Meckes; Matt Miller; Linda Moen; Stephanie Muentnich; J.C. Murray; Bob Orr; Agnes Otto; Douglas Parke; Brandon Parrish; Calvin Petrus; Andrew Potthast; Steve Prange; Michael Puro; Jeff Rensing; Trent Robinett; Jon Robison; Barry Rolle; Tim Ross; Adam Rutz; Ty Sander; Jack Schaller; Anne Schroer; Steve Schultz; Dick Scott; Cole Shippy; Mike Spayd; Matt Spencer; Kandi Spraggs; Steve Stirnemann; Chris Tepen; Amy Touchette Brown; Chip Touzinsky; Derek Vap; Kevin Wallace; Frank Weatherford; Joel Weinhold; Barb Wells; Steve Wells; Todd Welz; Marc Whitmore; Don Wichern; Mike Wild; Dale Williams; Ronnie Williams; Jacob Wilson; Srinu Yanamanamanda; Sabin Yanez; John Zimmermann

2023-24 ACEC/MO LIAISON COMMITTEES

Div. of Facilities Management Design & Construction

Tom Cissell (T.E. 6/30/24); John Neyens (T.E. 6/30/24); Trey Coad (T.E. 6/30/25); Alicia Kamischke (T.E. 6/30/25); Dick Scott (T.E. 6/30/25); Bruce Dawson (T.E. 6/30/26); Vicki LaRose (T.E. 6/30/26)

Kansas City Corps of Engineers

Steve Iverson (T.E. 6/30/24); Carrera Kauszler (T.E. 6/30/24); Tom Poer (T.E. 6/30/24); Mike Alexander (T.E. 6/30/25); Darren Forgy (T.E. 6/30/25); Rick Kaiser (T.E. 6/30/25); Jeff Bertel (T.E. 6/30/26); Jason Davis (T.E. 6/30/26); John Denlinger (T.E. 6/30/26)

Kansas City Missouri

Rob Krewson (T.E. 6/30/24); Julie McNiff (T.E. 6/30/24); Tom Poer (T.E. 6/30/24); Jeff McKerrow (T.E. 6/30/25); Laura Gray (T.E. 6/30/25); Michelle Mahoney (T.E. 6/30/26); Aaron McVicker (T.E. 6/30/26); Steve Schultz (T.E. 6/30/26)

Metropolitan St. Louis Sewer District

Brett Brooks (T.E. 6/30/24); Melissa Carver (T.E. 6/30/24); John Killips (T.E. 6/30/24); Mike Busch (T.E. 6/30/25); Howard Gotschall (T.E. 6/30/25); David Maxwell (T.E. 6/30/25); Eric Karch (T.E. 6/30/26); Curt Kimmel (T.E. 6/30/26); Dave Yates (T.E. 6/30/26)

Missouri Department of Natural Resources

Laura Riegel (T.E. 6/30/24); Anna Saindon (T.E. 6/30/24); Elke Boyd (T.E. 6/30/25); Steve Hicks (T.E. 6/30/25); Tony O'Malley (T.E. 6/30/25); Tom Gredell (T.E. 6/30/26); Laura Mwirigi Rightler (T.E. 6/30/26); Karen Rieken (T.E. 6/30/26)

Missouri Department of Transportation (CD&NE)

Jeff Rensing (T.E. 6/30/24); Rod Sachtleben (T.E. 6/30/24); John Zimmermann (T.E. 6/30/24); Todd Kempker (T.E. 6/30/25); John Klein (T.E. 6/30/25); Travis Pfeiffer (T.E. 6/30/25); Jason Dohrmann (T.E. 6/30/26); Dennis Heckman (T.E. 6/30/26); Kevin Heffern (T.E. 6/30/26)

Missouri Department of Transportation (HQ)

Vicki LaRose (T.E. 6/30/24); Kevin Wallace (T.E. 6/30/24); Srinu Yanamanamanda (T.E. 6/30/24); Buddy Desai (T.E. 6/30/25); Dave Diestelkamp (T.E. 6/30/25); Kevin Fuller (T.E. 6/30/25); Chris Linneman (T.E. 6/30/26); Anne Schroer (T.E. 6/30/26); Frank Weatherford (T.E. 6/30/26)

Missouri Department of Transportation (KC)

Matt Johnson (T.E. 6/30/24); Scott McDonald (T.E. 6/30/24); Ozzy Bravo (T.E. 6/30/25); Matt Spencer (T.E. 6/30/25); Mike McKenna (T.E. 6/30/26); Chip Touzinsky (T.E. 6/30/26)

Missouri Department of Transportation (NW)

Brian Kidwell (T.E. 6/30/24); Linda Rottinghaus (T.E. 6/30/24); Heidi Eilers (T.E. 6/30/25); Cory Imhoff (T.E. 6/30/25); Ben Asnicar (T.E. 6/30/26); Michelle Kratzer (T.E. 6/30/26)

Missouri Department of Transportation (SE)

Blake Blakemore (T.E. 6/30/24); Don Wichern (T.E. 6/30/24); Steve Hicks (T.E. 6/30/25); Jeff Smith (T.E. 6/30/25); Bruce Barnes (T.E. 6/30/26); Andrew Potthast (T.E. 6/30/26); Adam Rutz (T.E. 6/30/26)

Missouri Department of Transportation (SL)

Mike Erdtmann (T.E. 6/30/24); Howard Gotschall (T.E. 6/30/24); Linda Moen (T.E. 6/30/24); J.C. Murray (T.E. 6/30/25); Scott Smith (T.E. 6/30/25); Todd Welz (T.E. 6/30/25); Kandi Spraggs (T.E. 6/30/26); Amy Touchette Brown (T.E. 6/30/26); Joel Weinhold (T.E. 6/30/26)

Missouri Department of Transportation (SW)

Nick Correnti (T.E. 6/30/24); Holly Lehmkuhl (T.E. 6/30/24); Becky Baltz (T.E. 6/30/25); Jason Haynes (T.E. 6/30/25); Chris Tepen (T.E. 6/30/25); Bob Gilbert (T.E. 6/30/26); Steve Prange (T.E. 6/30/26)

MoDOT – ACECMO – AGC Design-Build Forum

J.C. Murray (T.E. 6/30/24); Ben Asnicar (T.E. 6/30/25); Tim Broyles (T.E. 6/30/25); Tawn Nugent (T.E. 6/30/26)

MoDOT Consultant Advisory

Mike DeBacker; Bob Gilbert; Steve Hicks; Chris Linneman; Kevin Wallace

Professional Design Alliance

Marc Alper (T.E. 6/30/24); Neil Brady (T.E. 6/30/24); April Giesmann (T.E. 6/30/25); Bruce Dawson (T.E. 6/30/26)

St. Louis Board of Public Service

Ramin Ashrafzadeh (T.E. 6/30/24); Kelley Davis (T.E. 6/30/24); Greg Horn (T.E. 6/30/24); Jay Rakers (T.E. 6/30/25); Mike Wild (T.E. 6/30/25); David Maxwell (T.E. 6/30/26); Todd Welz (T.E. 6/30/26)

St. Louis Corps of Engineers

Pam Hobbs (T.E. 6/30/24); J.R. Landeck (T.E. 6/30/24); Laura Mwirigi Rightler (T.E. 6/30/24); Mark Bross (T.E. 6/30/25); Wayne Weber (T.E. 6/30/25); Jeff Bertel (T.E. 6/30/26); John Denlinger (T.E. 6/30/26); Jay Ellington (T.E. 6/30/26)

St. Louis County

Brian Eads (T.E. 6/30/24); Ryan Hagerty (T.E. 6/30/24); Steve Stirnemann (T.E. 6/30/24); Nick Correnti (T.E. 6/30/25); Don Wichern (T.E. 6/30/25); Mike Brown (T.E. 6/30/26); Kevin Kriete (T.E. 6/30/26); Linda Moen (T.E. 6/30/26)

Structural Assessment & Visual Evaluation (SAVE) Coalition

Vicki LaRose (T.E. 6/30/26); Scott Perkins (T.E. 6/30/26)

GEOGRAPHICAL INDEX

BRANSON

Cook, Flatt & Strobel Engineers
MECO Engineering, Inc.
Palmerton & Parrish, Inc.

CAPE GIRARDEAU

Bacon Farmer Workman Engineering

CARTHAGE

OWN, Inc.
Zanevan Engineering, LLC

COLUMBIA

Allstate Consultants LLC
Bartlett & West, Inc.
Engineering Surveys and Services
Klingner & Associates, P.C.
McClure
Snyder Engineering, Inc.
Terracon Consultants, Inc.
Texas Design Concepts, Inc.
TREKK Design Group, LLC

FORSYTH

HDR

HANNIBAL

Klingner & Associates, P.C.
MECO Engineering, Inc.
Poepping, Stone, Bach & Assoc.

HARRISONVILLE

Lee & Company LLC
OWN, Inc.

JACKSON

Strickland Engineering, L.C.

JEFFERSON CITY

Barr Engineering Company
Bartlett & West, Inc.
Cook, Flatt & Strobel Engineers
GREDELL Engineering Resources
MECO Engineering, Inc.
Midwest Environmental Consultants
Prost Builders, Inc.

JOPLIN

Allgeier, Martin and Associates, Inc.
Olsson
OWN, Inc.
Palmerton & Parrish, Inc.
Terracon Consultants, Inc.
TranSystems Corporation

KANSAS CITY AREA

AECOM
Affinis Corp.
Alfred Benesch & Company
Allgeier, Martin and Associates, Inc.
Antella Consulting Engineers, Inc.
Apex Engineers, Inc.
Argus Consulting, Inc.
Bartlett & West, Inc.
Black & Veatch
Burns & McDonnell
Bob D. Campbell & Company, Inc.
BranchPattern, Inc.
CDM Smith
Cook, Flatt & Strobel Engineers
Crawford, Murphy & Tilly, Inc.
Garver
GBA, Inc.
Hanson Professional Services Inc.
HDR
Hg Consult, Inc.
HNTB Corporation
Jacobs
Kimley-Horn and Associates, Inc.
Lamp Rynearson, Inc.
Lochner
McClure

Premier Engineering Consultants, LLC
Olsson
OWN, Inc.
Taliaferro & Browne, Inc.
Tetra Tech, Inc.
TranSystems Corporation
TREKK Design Group, LLC
Veenstra & Kimm, Inc.
Walter P Moore
Wilson & Company, Inc., Engr. & Arch.

KIRKSVILLE

Benton & Associates, Inc.

LEBANON

Benton & Associates, Inc.

LEE'S SUMMIT

Allstate Consultants LLC
HDR
Leigh & O'Kane, L.L.C.
SE3, LLC
Terracon Consultants, Inc.

MACON

Benton & Associates, Inc.
Howe Company, LLC
McClure

MARCELINE

Allstate Consultants LLC

MARSHFIELD

Cross Discipline Engineering, LLC

MONETT

OWN, Inc.

O'FALLON

GBA, Inc.
Horner & Shifrin, Inc.

POPLAR BLUFF

Horner & Shifrin, Inc.
S.H. Smith & Co., Inc.

RIVERSIDE

Renaissance Infrastructure Consulting

ROLLA

Allgeier, Martin and Associates, Inc.
Benton & Associates, Inc.
CM Archer Group, P.C.
SCI Engineering, Inc.
Terracon Consultants, Inc.

SIKESTON

Waters Engineering, Inc.

SPRINGFIELD

Allgeier, Martin and Associates, Inc.
Bartlett & West, Inc.
Cook, Flatt & Strobel Engineers
Crawford, Murphy & Tilly, Inc.
GeoEngineers, Inc.
GREDELL Engineering Resources
HDR
Midwest Environmental Consultants
Milestone Engineering, Inc.
Miller Engineering, PC
Olsson
OWN, Inc.
Palmerton & Parrish, Inc.
Terracon Consultants, Inc.
TREKK Design Group, LLC
Vecino Design, LLC

ST. CHARLES

Cole & Associates, Inc.
DOTec Corp
EFK Moen, LLC
HR Green, Inc.
Oates Associates, Inc.

SCI Engineering, Inc.
Thouvenot, Wade & Moerchen, Inc.

ST. JOSEPH

Snyder & Associates, Engrs. & Plan.

ST. LOUIS AREA

ABNA Engineering, Inc.
AECOM
Alper Audi, Inc.
Arch Rail Group, LLC
Barry-Wehmiller Design Group, Inc.
Bartlett & West, Inc.
BFA Inc.
Black & Veatch
Brown and Caldwell
Burns & McDonnell
CBB
CDG Engineers
Civil Design, Inc.
Cole & Associates, Inc.
Councilman-Hunsaker & Associates
Crawford, Murphy & Tilly, Inc.
Donohue & Associates, Inc.
EDM Incorporated
EFK Moen, LLC
Engineered Corrosion Solutions
Engineering Design Source, Inc.
Farnsworth Group, Inc.
Frontenac Engineering Group
Garver
GBA, Inc.
Geotechnology, LLC
GHD, Inc.
Hanson Professional Services Inc.
HDR
HNTB Corporation
Horner & Shifrin, Inc.
HR Green, Inc.
IMEG Corp.
Jacobs
Juneau Associates, Inc., P.C.
KimHEC LLC
Lochmueller Group
M3 Engineering Group PC
Modjeski and Masters, Inc.
Oates Associates, Inc.
Parsons
Pitzman's Surveying Group, Inc.
Prairie Engineers, P.C.
Quigg Engineering Inc.
Reitz & Jens, Inc.
Renaissance Infrastructure Consulting
Rollie Johnson, Inc.
SCI Engineering, Inc.
Shannon & Wilson, Inc.
Solutions AEC, LLC
SSE, Inc.
Stantec
STL Engineering, LLC
Stock & Associates C.E., Inc.
Surveying and Mapping, LLC
Taliaferro & Browne, Inc.
Terracon Consultants, Inc.
Tetra Tech, Inc.
Thompson Civil, LLC
Thouvenot, Wade & Moerchen, Inc.
TranSystems Corporation
TREKK Design Group, LLC
Trileaf Corporation
Volkert, Inc.
Wood Environment & Infrastructure
Woolpert, Inc.
WSP USA Inc.

ST. ROBERT

OWN, Inc.

LEGEND TO ENGINEERING SERVICES

ACOUSTICAL

Acoustics; Noise control; Vibration and structural dynamics -- analysis and testing; Industrial noise control/monitoring; Sound system designs

ARCHITECTURAL

Architecture; Interior design; Landscape architecture; Urban design

CIVIL

Highways; Streets; Bridges; Recreational facilities; Tunnels; Utility systems; Water and sewage systems; Sanitary; Solid waste disposal

CONSTRUCTION MANAGEMENT

Construction supervision; Construction surveys; Construction observation; Management of design and construction phases of a project

ELECTRICAL

Building wiring; Communications; Electric and Electronic systems; Elevators and escalators; Fire protection systems; Instrumentation and controls; Lighting; Power production and transmission; Signal systems

ENVIRONMENTAL

Environmental impact statements/assessments; Asbestos assessment; Abatement designs; Hazardous materials remedial investigations/feasibility studies; Identifying hazardous and toxic materials; Materials testing

FORENSIC

Expert testimony

GEOTECHNICAL

Foundation studies; Geological investigations; Groundwater investigations; Soils investigation and testing; Soil and rock mechanics; Earth and earth-rock dams, Slope stability and shoring design; Geohydrology; Geophysics; Earthquake engineering and geotechnical instrumentation

INDUSTRIAL

Management studies; Manufacturing economics; Manufacturing facilities; Operations analysis and scheduling; Production methods and processes; Materials handling

MECHANICAL

Heating, ventilation and air conditioning design; Plumbing; Boiler plants; Cold storage; Heat transfer; Energy studies

PLANNING

Land use and site planning; Comprehensive city, regional and recreational planning

STRUCTURAL

Bridges; Buildings; Foundations; Parking garages; Structural analyses; Towers

SURVEYING

Land surveys; Boundary; Topographic; Construction staking; Mapping; Photogrammetric

TRANSPORTATION

Airports; Highways; Parking system; Railroads; Traffic studies; Transportation systems

DESIGN SERVICES INDEX

The chart below is intended to provide "at-a-glance" information about the services provided by ACEC/MO member firms. (See LEGEND on preceding page.)

FIRM	ACOUSTICAL	ARCHITECTURAL	CIVIL	CONSTRUCTION MGMT.	ELECTRICAL	ENVIRONMENTAL	FORENSIC	GEOTECHNICAL	INDUSTRIAL	MECHANICAL	PLANNING	STRUCTURAL	SURVEYING	TRANSPORTATION	OTHERS
ABNA Engineering, Inc. *			•	•	•	•		•			•	•	•	•	1,3,5,7,9,10
AECOM		•	•	•	•	•		•	•	•	•	•	•	•	1,2,4,5,6,7,9,10,12,14
Affinis Corp. *			•					•			•	•	•	•	1,5,7,9,10
Alfred Benesch & Company			•	•	•	•		•	•	•	•	•	•	•	1,5,7,9,10,12,13
Allgeier, Martin and Associates, Inc.			•	•	•	•			•	•	•	•	•	•	2,5,10
Allstate Consultants, LLC *			•	•		•	•				•	•	•	•	1,3,5,7,10
Alper Audi, Inc.												•			9,10,13,14
Antella Consulting Engineers, Inc. *		•			•					•					
Apex Engineers, Inc.												•			
Arch Rail Group, LLC													•	•	10
Argus Consulting, Inc.			•	•	•	•				•	•			•	4,9
Bacon Farmer Workman Engrng. & Testing			•		•					•				•	10
Barr Engineering Company			•		•	•		•	•	•	•	•			5,7,10,12
Barry-Wehmiller Design Group, Inc.		•	•	•	•				•	•	•	•			4,7,9
Bartlett & West, Inc.		•	•	•	•	•			•	•	•	•	•	•	1,5,7,9,10,12
Benton & Associates, Inc.			•		•	•					•	•	•	•	4,5,7,9,10
BFA Inc.			•					•			•		•		1,9
Black & Veatch		•	•	•	•	•	•	•	•	•	•	•		•	1,2,4,5,6,7,9,10,13
BranchPattern, Inc. *	•				•					•					9
Brown and Caldwell			•	•	•	•			•	•	•	•			7,9
Burns & McDonnell		•	•	•	•	•		•	•	•	•	•		•	1,2,4,5,6,7,9,10,11,12
Bob D. Campbell & Company, Inc.												•			
CBB *			•	•							•			•	1,5,9
CDG Engineers		•	•	•	•	•			•	•		•	•	•	4,5,7,8,9,10
CDM Smith		•	•	•	•	•		•		•	•	•		•	5,7,9
Civil Design, Inc. *			•	•		•					•	•	•	•	5,7,9,10,12
CM Archer Group, P.C. dba Archer-Elgin *		•	•	•	•	•						•	•	•	1,5,7,9,10
Cole & Associates, Inc.			•								•		•		5,12
Cook, Flatt & Strobel Engineers, P.A.			•	•				•			•	•	•	•	1,3,7,9,10
Counsilman-Hunsaker & Associates, Inc.			•							•					
Crawford, Murphy & Tilly, Inc.			•	•	•	•				•	•	•	•	•	1,5,7,9,10
Cross Discipline Engineering, LLC			•		•										9
Donohue & Associates, Inc.			•		•	•				•		•			4,7
DOTec Corp			•		•		•			•		•			10
EDM Incorporated		•	•	•	•		•		•	•	•	•		•	7,9,10
EFK Moen, LLC *			•	•							•	•	•	•	1,5,7,9,10
Engineered Corrosion Solutions										•					3
Engineering Design Source, Inc. (EDSI) *			•	•		•						•	•	•	1,5,7,9,10

OTHER: 1 – Traffic; 2 – Telecommunications; 3 – Lab Testing; 4 – Control System Integration; 5 – GIS; 6 – Natural Gas; 7 – Water Resources; 8 – Photogrammetry; 9 – Design/Build; 10 – Bridge Design; 11 – Interior Design; 12 – Landscape Architecture; 13 – Building Enclosure Consulting; 14 – Cultural/Historic Preservation; 15 – Drone Data Collection & Condition Assessment

* = Firm is DBE, MBE, WBE, Certified Small Business, Hubzone Small Business. Please see their full listing on pages 23-40.

FIRM

	ACOUSTICAL	ARCHITECTURAL	CIVIL	CONSTRUCTION MGMT.	ELECTRICAL	ENVIRONMENTAL	FORENSIC	GEOTECHNICAL	INDUSTRIAL	MECHANICAL	PLANNING	STRUCTURAL	SURVEYING	TRANSPORTATION	OTHERS
Engineering Surveys and Services			•			•		•			•		•	•	3,7,9
Farnsworth Group, Inc.		•	•		•	•	•		•	•	•	•	•	•	1,2,4,5,6,7,9,10,12,13,14
Four Points Land Surveying & Engineering			•										•		5,7,8
Frontenac Engineering Group, Inc.			•	•					•			•	•		
Garver		•	•	•	•	•				•	•	•	•	•	1,5,7,9,10,12
GBA, Inc.		•	•	•	•	•			•	•	•	•	•	•	1,2,4,5,7,9,10,11,15
GeoEngineers, Inc.			•	•		•		•			•			•	3,5,7,9
Geotechnology, LLC						•		•							3,7
GHD, Inc.		•	•	•	•	•	•	•	•	•	•	•		•	4,5,7,9,13,15
GREDELL Engineering Resources, Inc. *			•	•		•	•	•			•			•	7,9,10
Hanson Professional Services Inc.			•	•	•	•	•	•	•	•	•	•	•	•	1,5,7,9,10,15
HDR		•	•	•	•	•		•	•	•	•	•	•	•	1,2,5,7,9,10,11,12
Hg Consult, Inc. *			•	•		•					•	•		•	1,10
HNTB Corporation		•	•	•	•	•		•		•	•	•		•	1,5,7,9,10,11,12
Horner & Shiffrin, Inc.			•	•	•	•	•		•	•		•	•	•	1,2,3,4,5,6,7,8,9,10,13
Howe Company, LLC			•									•	•	•	7,10
HR Green, Inc.		•	•	•	•	•			•	•	•	•		•	1,5,7,9,10,12
Hutchison Engineering, Inc. (HEI)		•	•	•		•	•	•	•		•	•	•	•	1,3,9,10
IMEG Corp.	•		•		•		•		•	•	•	•	•		2,5,9,10
Jacobs		•	•	•	•	•		•	•	•	•	•		•	1,2,4,5,7,9,10,11,12,15
Juneau Associates, Inc., P.C. *			•	•							•	•	•	•	5,7,10
KimHEC LLC *						•									
Kimley-Horn and Associates, Inc.			•		•	•				•	•	•		•	1,2,5,10,11,12
Klingner & Associates, P.C.		•	•	•	•	•		•	•	•	•	•	•	•	1,3,5,7,9,10,11,12
Lamp Rynearson, Inc.		•	•	•		•					•	•	•	•	1,5,7,9,12
Lee & Company LLC			•			•			•						7
Leigh & O'Kane, L.L.C. *												•			10
Lochmueller Group			•			•					•	•		•	1,5,7,9,10,14
H.W. Lochner			•	•	•	•			•		•	•	•	•	1,2,5,7,9,10
M3 Engineering Group PC *			•			•								•	5,7
McClure			•	•		•		•			•	•	•	•	1,7,9,10
MECO Engineering, Inc.			•	•	•	•				•		•	•	•	5,7,9,10
Midwest Environmental Consultants Co. *			•			•					•				
Milestone Engineering, Inc.			•	•							•	•		•	
Miller Engineering, PC							•					•			
Modjeski and Masters, Inc.				•	•					•		•		•	9,10
Oates Associates, Inc.			•								•	•	•	•	1,7,9,10
Olsson			•	•	•	•		•		•	•	•	•	•	1,3,4,5,7,10
OWN, Inc.			•			•		•	•		•	•	•	•	1,3,5,7,8,10
Palmerton & Parrish, Inc.						•		•							3
Parsons			•	•		•					•	•		•	1,4,5,9,10,12
Pitzman's Surveying Group, Inc. *			•								•		•		5

OTHER: 1 – Traffic; 2 – Telecommunications; 3 – Lab Testing; 4 – Control System Integration; 5 – GIS; 6 – Natural Gas; 7 – Water Resources; 8 – Photogrammetry; 9 – Design/Build; 10 – Bridge Design; 11 – Interior Design; 12 – Landscape Architecture; 13 – Building Enclosure Consulting; 14 – Cultural/Historic Preservation; 15 – Drone Data Collection & Condition Assessment

* = Firm is DBE, MBE, WBE, Certified Small Business, Hubzone Small Business. Please see their full listing on pages 23-40.

FIRM

	ACOUSTICAL	ARCHITECTURAL	CIVIL	CONSTRUCTION MGMT.	ELECTRICAL	ENVIRONMENTAL	FORENSIC	GEOTECHNICAL	INDUSTRIAL	MECHANICAL	PLANNING	STRUCTURAL	SURVEYING	TRANSPORTATION	OTHERS
Poepping, Stone, Bach & Assoc., Inc.		●	●		●	●			●	●	●	●	●	●	1,5,7,9,10,11,12
Prairie Engineers, P.C.			●	●	●	●				●	●	●	●	●	1,5,7,9,10,15
Premier Engineering Consultants, LLC *			●	●								●		●	1,7,9,10
Prost Builders, Inc.			●	●	●							●			9
Quigg Engineering Inc. *			●	●		●					●	●	●	●	1,5,7,9,10,12
Reitz & Jens, Inc.			●			●		●							3,7
Renaissance Infrastructure Consulting			●										●	●	1,7,9,11,12
SCI Engineering, Inc.						●		●						●	3,5,7,14
SE3, LLC *		●	●	●							●			●	1,7,9
Shannon & Wilson, Inc.				●		●		●							3,5,7
S.H. Smith & Co., Inc. *			●	●		●		●			●	●	●	●	1,3,5,7,10
Snyder & Associates, Engineers & Planners			●	●		●					●	●		●	1,3,5,7,10
Snyder Engineering, Inc.												●			
Solutions AEC, LLC *				●	●					●					9
SSE, Inc.							●					●			
Stantec	●	●	●	●	●	●	●	●	●	●	●	●	●	●	1,2,3,4,5,6,7,8,9,10,11,12
STL Engineering, LLC					●					●		●			
Stock & Associates Consulting Engrs., Inc.			●										●		
Strickland Engineering, L.C.		●	●		●				●	●	●		●	●	4,7,9
Surveying and Mapping, LLC (SAM, LLC)				●	●								●		5
Taliaferro & Brown, Inc. *		●	●	●		●					●	●	●	●	5,9,10,12
Terracon Consultants, Inc.						●	●	●		●					3,13,14
Tetra Tech, Inc.		●	●	●	●	●		●	●	●	●	●		●	1,4,5,7,9,10
Texas Design Concepts, Inc. (dba TDC Struc.)												●			9
The Haskell Company		●	●	●	●	●			●	●	●	●		●	4,7,9,10,11,12
Thompson Civil, LLC			●	●							●			●	1,9
Thouvenot, Wade & Moerchen, Inc.			●	●		●					●	●	●	●	1,5,7,9,10
TranSystems Corporation		●	●	●	●	●			●	●	●	●	●	●	1,3,5,7,9,10,11,14
TREKK Design Group, LLC *			●	●		●					●		●	●	1,5,7,9,10,15
Trileaf Corporation		●	●			●				●			●		2,8
Vecino Design, LLC		●		●	●					●					11,12
Veenstra & Kimm, Inc.			●	●		●					●	●	●	●	1,7,9,10,12
Volkert, Inc.			●	●		●		●			●	●		●	1,5,7,9,10
Walter P Moore			●				●					●		●	1,7,9,10,13,14
Waters Engineering, Inc.			●										●		
Wilson & Company, Inc., Engineers & Arch.		●	●	●	●	●			●	●	●	●	●	●	1,5,7,8,9,10
Woolpert, Inc.		●	●		●				●	●	●	●	●	●	1,5,7,9,10
WSP USA Inc.	●	●	●	●	●	●		●	●	●	●	●		●	1,2,5,6,7,9,10,11,12
Zanevan Engineering, LLC			●	●				●			●	●		●	1,5,7,9,10

OTHER: 1 – Traffic; 2 – Telecommunications; 3 – Lab Testing; 4 – Control System Integration; 5 – GIS; 6 – Natural Gas; 7 – Water Resources; 8 – Photogrammetry; 9 – Design/Build; 10 – Bridge Design; 11 – Interior Design; 12 – Landscape Architecture; 13 – Building Enclosure Consulting; 14 – Cultural/Historic Preservation; 15 – Drone Data Collection & Condition Assessment

* = Firm is DBE, MBE, WBE, Certified Small Business, Hubzone Small Business. Please see their full listing on pages 23-40.

LISTING OF MEMBER REPRESENTATIVES

- A -

Abkemeier, Tom – Shannon & Wilson, Inc.
 Adewale, Abe – ABNA Engineering, Inc.
 Adewale, Nicole – ABNA Engineering, Inc.
 Alexander, Ty – Terracon Consultants, Inc.
 Alizadeh, Edmond D. – Geotechnology, LLC
 Allen, Erin – Surveying and Mapping, LLC (SAM, LLC)
 Alper, Marc H. – Alper Audi, Inc.
 Andebrahn, Hagos E. – Taliaferro & Browne, Inc.
 Armouti, Raed – Crawford, Murphy & Tilly, Inc.
 Audi, Andre – Alper Audi, Inc.

- B -

Bach, Charles – Poepping, Stone, Bach & Assoc., Inc.
 Banashek, Michael – Horner & Shifrin, Inc.
 Barker, Bill – Tetra Tech, Inc.
 Bartlett, Charles A. – Alfred Benesch & Company
 Bates, William – Trileaf Corporation
 Bauer, Frank – The Haskell Company (formerly Benham Design, LLC)
 Baum, Mark – Barry-Wehmiller Design Group, Inc.
 Beckemeier, Karl – Rinker Materials
 Bennett, Dave – Engineering Surveys and Services
 Bensman, James D. – MECO Engineering, Inc.
 Bertel, Jeffrey D. – Reitz & Jens, Inc.
 Berthold, Bill – Pitzman's Surveying Group, Inc.
 Bezenek, Kris – Texas Design Concepts, Inc. (dba TDC Structural Eng.)
 Blest, Kevin – Pitzman's Surveying Group, Inc.
 Bohler, Tricia – Civil Design, Inc.
 Bonner, Doug – Farnsworth Group, Inc.
 Boos, Chris – Bob D. Campbell & Company, Inc., Structural Engrs.
 Borst, Sean – Black & Veatch
 Brammeier, Chris – CBB
 Bredehoeft, Kent F. – Argus Consulting, Inc.
 Brewer, Heather – DOTec Corp
 Bridges, Jeremiah – Cross Discipline Engineering, LLC
 Brooks, Brett – Engineering Design Source, Inc. (EDSI)
 Bross, Mark C. – Klingner & Associates, P.C.
 Broyles, Timothy S. – Parsons
 Brown, Daniel – Walter P Moore
 Brown, Michael – Wallace Saunders
 Brummer, John – Tetra Tech, Inc.
 Bubanovich, Stephen – H R Quadri Contractors, LLC
 Burke, Jim – Hutchison Engineering, Inc. (HEI)
 Burns, Chris – CDM Smith
 Bush, Amanda – Leigh & O'Kane, L.L.C.

- C -

Callanan, Frank – Geotechnology, LLC
 Campbell, Rick – Barr Engineering Company
 Cannon, Lee – CBB
 Chestnut, Nicki – Taliaferro & Browne, Inc.
 Chittenden, John – Waters Engineering, Inc.
 Chow, Wynne – WSP USA Inc.
 Christopher, Stan – HDR
 Clark, Sara – TranSystems Corporation
 Coad, Trey – SCI Engineering, Inc.
 Cobb, William – S.H. Smith & Co., Inc.
 Coker, Ron – Burns & McDonnell
 Cole, Kimberly – KimHEC LLC
 Connelly, Jeff – ACEC Business Insurance Trust, Greyling
 Corwan, Kevin – InScope
 Corcoran, Chip – Renaissance Infrastructure Consulting, Inc.
 Crabtree, Richard – Bob D. Campbell & Company, Inc., Structural Engrs.
 Crady, Bryce D. – Apex Engineers, Inc.
 Cristy, Clayton – Olsson

- D -

Dailey, Cody – McClure

Davis, Gary – Bartlett & West, Inc.
 Davis, Mike – Benton & Associates, Inc.
 Davis, Wayne – Bob D. Campbell & Company, Inc., Structural Engrs.
 Dawson, Bruce – GREDELL Engineering Resources, Inc.
 DeArmond, Dan – WSP USA Inc.
 DeBacker, Michael – Burns & McDonnell
 Desai, B. – Jacobs
 Diestelkamp, Dave – ABNA Engineering, Inc.
 Dillow, Dave – Woolpert, Inc.
 Dohrmann, Jason – HR Green, Inc.
 Donahue, Steve – Horner & Shifrin, Inc.
 Dorrell, Adam J. – Benton & Associates, Inc.
 Drimmel, Joe – HDR
 Dutt, James – Shannon & Wilson, Inc.

- E -

Eckhart, Andrew – OWN Engineering, Inc.
 Eckhart, John Jason – Zanevan Engineering, LLC
 Ehrett, Steve – Alper Audi, Inc.
 Eilers, Darrell – EFK Moen, LLC
 Eisenbraun, Troy – Wilson & Company, Inc., Engineers & Architects
 Ellerbrock, Norman – Four Points Land Surveying & Engineering, Inc.
 Ellington, Jay – CDG Engineers
 Engel, Paul – OWN Engineering, Inc.
 Erdtmann, Mike – GBA, Inc.
 Erter, Shawwna – SCI Engineering, Inc.
 Eshelman, Marc – M3 Engineering Group PC
 Espinosa, Brandon – Surveying and Mapping, LLC (SAM, LLC)

- F -

Falbe, Michael J. – Bob D. Campbell & Company, Inc., Structural Engrs.
 Faulkner, Roger – R&K Excavation, Inc.
 Feuerborn, Wayne – HNTB Corporation
 Fiessinger, Chuck – BHMG Engineers, Inc.
 Fillmore, Scott – Lockton Companies, Inc.
 Finke, J. – Jacobs
 Fischer, Paul – Burns & McDonnell
 Flageolle, Chris – H.W. Lochner
 Ford, David T. – Walter P Moore
 Frank, Dan – Argus Consulting, Inc.
 Frankenberg, Mark R. – BFA Inc.
 Frankenberg, Raymond H. – BFA Inc.
 Frost, Barb – TranSystems Corporation
 Fuller, Kevin – Crawford, Murphy & Tilly, Inc.

- G -

Gastoni, Vincent T. – Parsons
 Giering, Cameron – DOTec Corp
 Gipple, G. Kelley – Structural Engineering Associates, Inc.
 Gilbert, Bob – Bartlett & West, Inc.
 Gonzalez, Ildefonso – DOTec Corp
 Goodwin, T.A. – Parsons
 Gotschall, Howard – Hanson Professional Services Inc.
 Graham, Leonard J. – Taliaferro & Browne, Inc.
 Gray, Laura – Lamp Rynearson, Inc.
 Gredell, Thomas R. – GREDELL Engineering Resources, Inc.
 Green, Bentley – Black & Veatch
 Greenlief, Cliff – Walter P Moore
 Gregory, Tirzah – HNTB Corporation
 Groner, Darleen – Four Points Land Surveying & Engineering, Inc.
 Grossenbacher, Mark – The Haskell Company (formerly Benham Design)

- H -

Hagerty, Joseph G. – Oates Associates, Inc.
 Hansel, Michelina – Farnsworth Group, Inc.
 Harder, Kevin – Black & Veatch
 Harding, Scott – SCI Engineering, Inc.
 Harrison, Earl – Hg Consult, Inc.

Harster, Edward – Arch Rail Group, LLC
 Hasty, Dave – Wood Environment & Infrastructure Solutions, Inc.
 Hennen, Darren – Olsson
 Henry, Lindsey R. – Midwest Environmental Consultants Co.
 Henson, Jeff – Black & Veatch
 Herndon, Wesley W. – Juneau Associates, Inc., P.C.
 Hetlage, David – WSP USA Inc.
 Hicks, Steve – S.H. Smith & Co., Inc.
 Hilderbrand, Stephen – CDG Engineers
 Hobbs, Pam – Geotechnology, LLC
 Holloway, Davis – Volkert, Inc.
 Holst, Josiah – HR Green, Inc.
 Horn, G. – Jacobs
 Horst, Barry – Bacon Farmer Workman Engineering & Testing, Inc.
 Howe, Shannon J. – Howe Company, LLC
 Howell, Dan – Farnsworth Group, Inc.
 Huck, D. – Jacobs
 Hummert, Jim – AECOM

- I -

Imhoff, Cory – HDR
 Ivy, Gretchen – HNTB Corporation

- J -

Jackson, Steve – N.B. West Contracting Company, Inc.
 Jacobs, Matt – H.W. Lochner
 Jansen, Andrew – STL Engineering, LLC
 Jansen, Mark – RubinBrown, LLP
 Jarrett, Jim – GBA, Inc.
 Jasper, Jarrett – Horner & Shifrin, Inc.
 Januska, Bob – GHD, Inc.
 Jensen, Scott – Antella Consulting Engineers, Inc.
 John, George – Engineering Design Source, Inc. (EDSI)
 Johnson, Mark – Surveying and Mapping, LLC (SAM, LLC)
 Johnston, Mark L. – H.W. Lochner
 Jones, Chris – Emery Sapp & Sons, Inc.
 Jones, LaWanda – ABNA Engineering, Inc.
 Juneau, Charles E. – Juneau Associates, Inc., P.C.
 Juris, Jeff – The Haskell Company (formerly Benham Design, LLC)

- K -

Kaniecki, Brent – Anders CPAs + Advisors
 Karch, Eric J. – Reitz & Jens, Inc.
 Kasmann, Ross – Engineering Surveys and Services
 Kempker, Todd – Bartlett & West, Inc.
 Killips, John – GHD, Inc.
 Kim, Lucas – Engineered Corrosion Solutions
 Klachko, Ryan – RJN Group, Inc.
 Klautdt, Justin – Wilson & Company, Inc., Engineers & Architects
 Knight, William – Wilson & Company, Inc., Engineers & Architects
 Kochelek, Jeff – Engineered Corrosion Solutions
 Kocher, Kyle E. – Reitz & Jens, Inc.
 Kokal, J. – Jacobs
 Kowalik, Ray – Burns & McDonnell
 Kramer, Lisa – Prairie Engineers, P.C.
 Krebsbach, John – ACEC Life/Health Insurance Trust
 Kreutz, Tony – SCI Engineering, Inc.
 Krewson, Rob – Alfred Benesch & Company
 Kronlage, P.J. – EFK Moen, LLC
 Krussel, Will – WSP USA Inc.
 Kuchinski, Jennifer – WSP USA Inc.

- L -

Landeck, J.R. – Thouvenot, Wade & Moerchen, Inc.
 Landis, David – Walter P Moore
 LaRose, Dennis – Civil Design, Inc.
 LaRose, Vicki – Civil Design, Inc.
 Larson, Shane – Hutchison Engineering, Inc. (HEI)
 Leathers-Gratton, Kristen – Affinis Corp.
 Lee, Gary – Lee & Company LLC
 Lehmen, Josh – Engineering Surveys and Services
 Leight, Shawn – CBB

Lentz, Scott – Four Points Land Surveying & Engineering, Inc.
 LePage, Charlie – Cook, Flatt & Strobel Engineers, P.A.
 Linneman, Chris – EFK Moen, LLC
 Lu, Charlie – SSE, Inc.

- M -

MacDonald, Robert – S.H. Smith & Co., Inc.
 Macias, Alexander E. – Snyder & Associates, Engineers & Planners, LLC
 Madalon, Len – EDM Incorporated
 Mahoney, Michelle – Cook, Flatt & Strobel Engineers, P.A.
 Maletta, Nick – Holmes Murphy & Associates
 Malir, Paul J. – TranSystems Corporation
 Maniktala, Rick – BranchPattern, Inc.
 Mannino, Angelo – Cook, Flatt & Strobel Engineers, P.A.
 Masoumy, Gholam – EDM Incorporated
 Maxwell, Dave – HR Green, Inc.
 McCarty, M. – Jacobs
 McClure, Teresa – Volkert, Inc.
 McDonald, David H. – Veenstra & Kimm, Inc.
 McKenna, Mike – Affinis Corp.
 McKerrow, Jeff D. – Kimley-Horn and Associates, Inc.
 McQuality, Matt – Geotechnology, LLC
 McVicker, Aaron – McClure
 Meckes, Dan – Crawford, Murphy & Tilly, Inc.
 Medows, Jeff – CM Archer Group, P.C. dba Archer-Elgin
 Melton, Marjorie L. – M3 Engineering Group PC
 Mersch, Ron – Olsson
 Middendorf, Max F. – MECO Engineering, Inc.
 Miller, Bob – TranSystems Corporation
 Miller, Dan – Lamp Ryneason, Inc.
 Miller, Mark A. – GeoEngineers, Inc.
 Miller, Steven – Frontenac Engineering Group, Inc.
 Miller, Travis – Miller Engineering, PC
 Moen, Linda – EFK Moen, LLC
 Moran, Chris – Counsilman-Hunsaker & Associates, Inc.
 Morris, Ty – Barr Engineering Company
 Morrison, Rob – Barr Engineering Company
 Murray, J.C. – AECOM
 Muschany, T. Scott – Trileaf Corporation
 Mwirigi Rightler, Laura – Lochmueller Group

- N -

Neath, Robert J. – Donohue & Associates, Inc.
 Nelson, Lance – Tetra Tech, Inc.
 Neyens, John J. – Klingner & Associates, P.C.
 Nichols, David B. – Parsons
 Nicula, Ramona – EDM Incorporated
 Nugent, Tim – CDG Engineers
 Nyang, Lamin – Taliaferro & Browne, Inc.

- O -

Obermeyer, Jeffrey – STL Engineering, LLC
 Obertino, Jennifer – AECOM
 O'Connor, Greg – Farnsworth Group, Inc.
 O'Kane, Adam – Leigh & O'Kane, L.L.C.
 Okuagu, Raymond – Premier Engineering Consultants, LLC
 Olson, Rick – Engineering Design Source, Inc. (EDSI)
 O'Malley, Tony – Lamp Ryneason, Inc.
 Orth, Mike – Black & Veatch
 Overturf, III, William H. – Ross & Baruzzini, Inc.

- P -

Paden, Bret – Woolpert, Inc.
 Pappa, Gina – Barry-Wehmiller Design Group, Inc.
 Parrish, Brandon R. – Palmerton & Parrish, Inc.
 Parrish, Erin – Palmerton & Parrish, Inc.
 Petermeier, David – Modjeski and Masters, Inc.
 Pippin, Mindy – Ollis/Akers/Arney Insurance & Business Advisors
 Pociask, Kyle – Four Points Land Surveying & Engineering, Inc.
 Porter, Brian – Terracon Consultants, Inc.
 Prange, Steve – Crawford, Murphy & Tilly, Inc.
 Price, Chris – HNTB Corporation

Prost, Vaughn X. – Prost Builders, Inc.
Purol, Michael – Hutchison Engineering, Inc. (HEI)

- R -

Rader, Shane – Palmerton & Parrish, Inc.
Raffaello, Greg – EDM Incorporated
Reitz, Paul H. – Reitz & Jens, Inc.
Rensing, Jeffrey R. – Oates Associates, Inc.
Rhoades, Steve – IMEG Corp.
Rieger, Paul – Black & Veatch
Riggs, Kevin E. – Cole & Associates, Inc.
Robinett, Kimberly – TREKK Design Group, Inc.
Robinett, Trent – TREKK Design Group, Inc.
Robison, Jonathan L. – GeoEngineers, Inc.
Robison, William – S.H. Smith & Co., Inc.
Rohlfing, Rick. G. – BFA Inc.
Rolle, Barry O. – HDR
Rosenbarger, Donald G. – Delta Companies Inc.
Ross, Ben – Engineering Surveys and Services
Ross, Timothy J. – GBA, Inc.
Rottinghaus, Linda – Affinis Corp.

- S -

Sander, Chris – McClure
Sander, Ty – Crawford, Murphy & Tilly, Inc.
Santos, Monica – Antella Consulting Engineers, Inc.
Sayre, Cary – Allstate Consultants LLC
Sayre, Chad – Allstate Consultants LLC
Schleeter, Brad – Affinis Corp.
Schneider, Jason – Stantec
Schneider, Jennifer – Wood Environment & Infrastructure Solutions, Inc.
Seiler, Tom – Seiler Instrument Company
Shane, Dan – HR Green, Inc.
Shy, Ron C. – Allstate Consultants LLC
Sick, B. Joseph – Klingner & Associates, P.C.
Smith, Allen – TranSystems Corporation
Smith, Andy – Lamp Ryneason, Inc.
Smith, Glenn – CDG Engineers
Smith, Jeff – HNTB Corporation
Smith, Scott J. – Lochmueller Group
Snider, John T. – OWN Engineering, Inc.
Snyder, Mark A. – Snyder Engineering, Inc.
Spayd, Mike – Garver
Spears, Eugene – Allgeier, Martin & Associates, Inc.
Spencer, Matt – Solutions AEC, LLC
Stewart, Vernal – SE3, LLC
Stock, Dan – Stock & Associates Consulting Engineers, Inc.
Straub, Chris – Argus Consulting, Inc.
Strickland, Brian W. – Strickland Engineering, L.C.
Strickland, Mark D. – Strickland Engineering, L.C.
Strickland, Thomas H. – Strickland Engineering, L.C.
Stumne, Stephen – Wood Environment & Infrastructure Solutions, Inc.
Summers, Bob – Horner & Shifrin, Inc.
Sunderland, Kelly – Bartlett & West, Inc.

- T -

Tate, Bradley L. – Milestone Engineering, Inc.
Theerman, Jeff – Brown and Caldwell
Thomas, Marty E. – BHMGE Engineers, Inc.
Thomas, Nicholas – Wilson & Company, Inc., Engineers & Architects
Thompson, Lorenzo – Thompson Civil, LLC
Touzinsky, Charles – Kimley-Horn and Associates, Inc.
Townsend, Jim – Wilson & Company, Inc., Engineers & Architects

- U -

Unger, Timothy R. – SSE, Inc.

- V -

Veach, Jessi – CDM Smith
Vogler, Scott E. – MECO Engineering, Inc.

- W -

Wallace, Kevin – HNTB Corporation
Waltemath, Roger E. – Veenstra & Kimm, Inc.
Warren, Walter – Vecino Design, LLC
Washam, Breck – Burns & McDonnell
Watters, Jason – Volkert, Inc.
Watts, Chris W. – Parsons
Weatherford, Frank – TranSystems Corporation
Weber, Dave – Allstate Consultants LLC
Wells, Steve – Hg Consult, Inc.
Weinhold, Joel – Geotechnology, LLC
Welsch, Bob – Stantec
Welz, Todd – Quigg Engineering Inc.
Wesley, Andy – Surveying and Mapping, LLC (SAM, LLC)
West, Adam – The Haskell Company (formerly Benham Design, LLC)
Whitmore, Marc – HNTB Corporation
Williams, Dale – Missouri Asphalt Pavement Association
Willis, Dean – Allgeier, Martin & Associates, Inc.
Wilson, Cale – Terracon Consultants, Inc.
Winkelman, Tom – Hutchison Engineering, Inc. (HEI)
Wittliff, David – Barry-Wehmiller Design Group, Inc.

- Y -

Yanamamanda, Srinivasa - CBB
Yanez, Sabin – Cook, Flatt & Strobel Engineers, P.A.
Yates, Dave – Brown and Caldwell
Yeaman, David G. – Burns & McDonnell
Young, Patrick – HDR

- Z -

Zidaru, Monica – Shannon & Wilson, Inc.
Zimmer, Roger – Trileaf Corporation
Zimmerman, David – Rollie Johnson, Inc.
Zink, Vince – Renaissance Infrastructure Consulting, Inc.



Dan Oblinger, Leadercraft, led the Leadership sessions for ACEC/MO's Future Leaders Academy.

USING THIS DIRECTORY

American Council of Engineering Companies of Missouri Directory 2023-24

The purpose of this directory is to foster a better understanding of the relationships between the client, the public and the professional engineer in private practice.

Firms listed in this directory are members of the American Council of Engineering Companies of Missouri. The firms maintain offices or provide engineering services in Missouri, are staffed and qualified, registered engineers and are pledged to uphold high professional and ethical standards. By their membership, they subscribe to the code of professional conduct established by law and are recognized as responsible, independent and impartial experts in their fields of practice.

This directory of Missouri consulting engineers will assist in securing qualified engineering services for any project. Information is also available on consulting engineering services in other states. For more information about American Council of Engineering Companies of Missouri member firms or members of the American Council of Engineering Companies in other states, write or call ACEC/MO.

How to Use this Directory

<i>Firm Name</i>	ABC Engineering, Inc. 3400 Manchester Road St. Louis, Missouri 63111 (314) 333-3333 FAX: (314) 333-3334 Email: abc@abcco.com URL: www.abcco.com Branch Office: 211 Madison Street Jefferson City, Missouri 65101 (573) 666-6666 FAX: (573) 666-6667 Other Offices In: 1 State Rep(s): John Doe Activities: ABC Engineering is a full-service architectural and engineering firm. Offers expertise in the architectural, environmental, geotechnical, planning, surveying, and transportation. Types of clients include cities/counties, governmental, institutional, educational and private sector developers. <i>Disadvantaged Business Enterprise</i>	<i>Number of Employees Nationwide</i>
<i>Address</i>		55 / 62
<i>Phone and Fax Numbers, E-mail Address, Website</i>		<i>Number of Employees in Missouri</i>
<i>Branch Offices</i>		
<i>Other State Offices</i>		
<i>Firm Specialties</i>		<i>Principals: Those who own or run the firm</i>
<i>Minority Firm Status</i>		

LISTING OF MEMBER FIRMS

ABNA Engineering, Inc.

35 / 40

4140 Lindell Boulevard
St. Louis, MO 63108-2914
(314) 454-0222 FAX: (314) 454-1235
Email: aadewale@abnacorp.com
URL: www.abnacorp.com

Other Offices In: 1 State

Rep(s): Abe Adewale, Nicole Adewale, Dave Diestelkamp, LaWanda Jones

Activities: ABNA provides Structural, Civil Engineering, surveying, GIS/Planning, construction management, Testing & Inspection for public works infrastructure, industrial, educational, healthcare and commercial projects. Types of clients include MoDOT, MSD, Metro, St. Louis Airport, Counties, Municipalities, School Districts, Industrial Corporations, and Park Districts.

Disadvantaged Business Enterprise

Minority Business Enterprise

Women Business Enterprise

AECOM

137 / 54,000

100 N. Broadway, 20th Floor
St. Louis, MO 63102
(314) 429-0100 FAX: (314) 429-0462
Email: jc.murray@aecom.com
URL: www.aecom.com

Branch Office:

2380 McGee Street, Suite 200
Kansas City, MO 64108
(816) 561-4443 FAX: (816) 561-2863

Other Offices In: 45 States

Rep(s): Jennifer Obertino, Jim Hummert, J.C. Murray

Activities: Across all components of the project life-cycle – design; build; finance & operate – AECOM Technical Services, Inc. (AECOM) is positioned to deliver consulting services from a global platform (over 150 countries). These services include all aspects of planning, environmental science and engineering; civil, structural, geotechnical, mechanical, electrical, chemical and process engineering; as well as architecture and construction management. The primary markets served include surface and air transportation, municipal water and wastewater utilities, solid and hazardous wastes, environmental, geotechnical and information solutions – for both public, private, and federal sector clients.

Affinis Corp.

5 / 39

8900 Indian Creek Parkway, Suite 450
Overland Park, KS 66210
(913) 239-1100 FAX: (913) 239-1111
Email: info@affinis.us
URL: www.affinis.us

Project Office:

310 Armour Road, Suite 206
North Kansas City, MO 64116
(913) 239-1100 FAX: (913) 239-1111

Other Offices In: 1 State

Rep(s): Kristen Leathers-Gratton, Brad Schleeter, Mike McKenna, Linda Rottinghaus

Activities: Affinis has built its reputation by providing excellent civil engineering, planning, and consulting services. With a focus on municipal, state and federal clients, we strive to continually improve, setting new standards in client service. We serve our clients in the following areas: infrastructure planning design, civil/site planning and design, water resources analysis and design, levee and dam assessment analysis and design, sustainable design and green solutions, and consulting services.

Certified Small Business

Alfred Benesch & Company

10 / 865

One Main Plaza
4435 Main Street, Suite 1150
Kansas City, MO 64111
(816) 221-4222
Email: rkrewson@benesch.com
URL: www.benesch.com

Other Offices In: 17 States

Rep(s): Charles A. Bartlett, Rob Krewson

Activities: Our transportation practice includes the planning and design of highways, roadways, bridges, aviation, and railroads from conceptual through construction. Our structural practice includes vertical and horizontal design of structures, and bridge and dam inspection services. Our environmental practice includes hazardous waste remediation, NEPA services, water and wastewater treatment and conveyance. Our civil practice includes geotechnical, surveying, stormwater conveyance, flood protection, site development, hydraulics and hydrology. Our municipal engineering services include traffic, trails and parks, lighting, asset management, and grant funding assistance. Our mechanical/electrical practice includes HVAC, power and control. Clients include governmental, industrial, institutional and private.

Allgeier, Martin and Associates, Inc. (Civil Division)

48

7231 East 24th Street
Joplin, MO 64804-3485
(417) 680-7200 FAX: (417) 680-7300
Email: eugene.spears@amce.com
URL: www.amce.com

Other Office:

112 West 8th Street
Rolla, MO 65401
(573) 341-9487 FAX: (573) 341-9486

Branch Office:

1201 N.W. Briarcliff Parkway, 2nd Floor
Kansas City, MO 64116
(816) 673-7540

Branch Office:

1801 W. Norton Road, Suite 309B
Springfield, MO 65803
(417) 351-6669

Rep(s): Eugene Spears, Dean Willis

Activities: Engineering studies, design, & construction phase services for governmental, commercial, industrial and private clients in the areas of water, wastewater, transportation, environmental issues, hydrology, hydraulic structures, stormwater management, structural design and analysis, land surveys, rate evaluations, site development, and GIS.

Allstate Consultants LLC

41

3312 LeMone Industrial Boulevard
Columbia, MO 65201-8246
(573) 875-8799 FAX: (573) 875-8850
Email: allstate@allstateconsultants.net
URL: www.allstateconsultants.net

Branch Office:

30601 Highway 5
P.O. Box 156
Marceline, MO 64658
(660) 376-2941 FAX: (660) 376-3492
Email: carysayre@allstateconsultants.net

Branch Office:

P.O. Box 166
Lee's Summit, MO 64063
(816) 895-2310

Rep(s): Ron C. Shy, Dave Weber, Cary Sayre, Chad Sayre
 Activities: Subdivision planning, streets, sanitary sewers, storm sewers, water systems, wastewater treatment, water treatment, site plans, land surveying, GPS Surveying, traffic engineering, structural engineering, forensic engineering, and geotechnical engineering, including construction and materials testing. Clients include developers, architects, municipalities, counties, federal government.
Certified Small Business

Alper Audi, Inc.

17

1804 Borman Circle Drive
 St. Louis, MO 63146-4136
 (314) 432-8600 FAX: (314) 432-8630
 Email: marc.alper@alperaudi.com
 URL: www.alperaudi.com

Rep(s): Marc H. Alper, Andre Audi, Steve Ehrett
 Activities: Structural engineering consultants to architects, contractors, developers, owners, industry and government. Well versed in BIM, Integrated Project Delivery, and Design-Build, we design a wide variety of projects in reinforced concrete, structural steel, post-tensioned concrete, masonry and timber. Projects include commercial, industrial, institutional and governmental, single story, mid-rise and high-rise buildings, bridges, parking garages, tilt-up, seismic design and special structures.

Antella Consulting Engineers, Inc.

5

1600 Genessee, Suite 200
 Kansas City, MO 64102
 (816) 421-0950 FAX: (816) 249-2439
 Email: msantos@antella-inc.com
 URL: www.antella.com

Rep(s): Monica Santos, Scott Jensen
 Activities: Provide MEP design services including lighting design.
 Types of clients include
Disadvantaged Business Enterprise
Minority Business Enterprise
Women Business Enterprise

Apex Engineers, Inc.

29 / 44

1625 Locust Street
 Kansas City, MO 64108
 (816) 421-3222
 Email: Bryce@apex-engineers.com
 URL: www.apex-engineers.com
 Other Offices In: 3 States

Rep(s): Bryce D. Crady
 Activities: Apex delivers buildable, logical, and efficient structural designs for residential and commercial projects. By producing a quality set of drawings, then standing behind them during the entire construction process, we set ourselves apart from other structural firms. We pride ourselves on our responsiveness and creativity in construction administration, coming up with out of the box solutions to in-field challenges. Types of clients focus on Higher-Ed clients, Government, commercial, light industrial.

Arch Rail Group, LLC

3

5833 Pebble Oak Drive
 St. Louis, MO 63128
 (314) 472-3847
 Email: edharster@archrailgroup.com
 Rep(s): Edward Harster

Activities: Provide engineering services for the railroad industry, including bridge design, track design, maintenance work, surveying and inspection. Types of clients include Class I railroads, short-lines and industries.

Argus Consulting, Inc.

70

6363 College Boulevard, Suite 600
 Overland Park, KS 66211
 (816) 228-7500 FAX: (816) 228-7535
 Email: kbredhoeft@argusconsulting.com
 Other Offices In: 2 States

Rep(s): Kent F. Bredehoeft, Chris Straub, Dan Frank
 Activities: Argus is an engineering firm specialized in the programming, planning, design and construction follow-on of aircraft fuel storage facilities, aircraft hydrant fueling systems, 400 Hz ground power, preconditioned cabin air and aircraft deicing systems. Argus provides professional engineering services for airlines, airport authorities, oil companies, airport operating companies and all branches of the military.

Bacon Farmer Workman Engineering & Testing, Inc.

5 / 145

3437 William Street
 Cape Girardeau, MO 63701
 (573) 222-5632
 Email: bhorst@bfwengineers.com
 URL: www.bfwengineers.com
 Other Offices In: 4 States

Rep(s): Barry Horst
 Activities: Transportation related design work supporting heavy/highway construction. Specific design services include roadway geometric design, ADA upgrade services, bridge design (vehicular and pedestrian), pavement rehabilitation planning and design, traffic control layout, geotechnical investigation and analysis, storm water pollution prevention plan development, traffic signal and lighting design, NEPA compliance and permitting services, and utility relocation coordination services.

Hubzone Small Business

Barr Engineering Company

23 / 941

1001 Diamond Ridge, Suite 1100
 Jefferson City, MO 65109
 (573) 638-5000 FAX: (573) 638-5001
 Email: tmorris@barr.com
 URL: www.barr.com
 Other Offices In: 6 States

Rep(s): Ty Morris, Rick Campbell, Rob Morrison
 Activities: Barr Engineering Company's staff of more than 870 provides engineering, environmental and information technology services to clients in the manufacturing, forest products, mining, power, and refining industries, as well as attorneys and municipal, state, and federal agencies. Our areas of expertise include air quality permitting, environmental management and compliance assistance, water-supply and wastewater-treatment design, water resources management, permitting and design for hazardous and solid waste facilities, contaminated-site assessment and remediation, engineering design, process and materials handling design, and information management services. Barr was incorporated as an employee-owned firm in 1966 and has offices in Jefferson City, Missouri; Minneapolis, Duluth, and Hibbing, Minnesota; Ann Arbor and Grand Rapids, Michigan; Denver, Colorado; Bismark, North Dakota; Salt Lake City, Utah; and Calgary, Alberta.

Barry-Wehmiller Design Group, Inc.

50 / 1,500

8235 Forsyth Boulevard, Suite 900
 St. Louis, MO 63105
 (314) 778-4300
 Email: gina.pappa@bwdesigngroup.com
 URL: www.bwdesigngroup.com
 Other Offices In: 24 States

Rep(s): Gina Pappa, Mark Baum, David Wittliff

Activities: Architecture and multidisciplinary engineering of facilities, utilities, process plant, packaging, and control systems. Types of clients include private sector manufacturers of products and technology in the Food & Beverage, Life Sciences, Semiconductor, and General Industrial markets.

Bartlett & West, Inc.

50 / 350

601 Monroe Street, Suite 201
Jefferson City, MO 65101
(573) 634-3181 FAX: (573) 634-7904
Email: bob.gilbert@bartwest.com
URL: www.bartwest.com

Other Office:
1700-A Gilsinn Lane
Fenton, MO 63026
Email: don.wichern@bartwest.com

Other Office:
1801 W. Norton Road, Suite 309A
Springfield, MO 65803
Email: neil.brady@bartwest.com

Other Office:
3610 Buttonwood Drive, Suite 200
Columbia, MO 65201
(573) 552-2922
Email: steve.schultz@bartwest.com

Other Office:
800 E. 101st Terrace, Suite 350
Kansas City, MO 64131
(816) 282-6369
Email: kelly.sunderland@bartwest.com

Other Offices In: 8 States

Rep(s): Bob Gilbert, Todd Kempker, Gary Davis, Kelly Sunderland

Activities: Transportation, municipal, water and wastewater engineering services that include preliminary investigations with facility planning, engineering design, specification, observation of construction, rate studies, feasibility reports. Clients include federal, state, and municipal governments, developers, water districts and sewer districts, contractors and individuals.

Benton & Associates, Inc.

7 / 39

2414 Franklin Street
Kirksville, MO 63501
(660) 665-3575 FAX: (217) 245-4149
Email: jstewart@bentonassociates.com
URL: www.bentonassociates.com

Branch Office:
510 N. Missouri Street, Suite C
Macon, MO 63552
(660) 395-0300 FAX: (217) 245-4149
Email: jstewart@bentonassociates.com

Branch Office:
806-C East State Rte. 72
Rolla, MO 65401-3945
(573) 364-0980 FAX: (573) 364-0661
Email: tdablemont@bentonassociates.com

Branch Office:
219 N. Adams, Suite C
Lebanon, MO 65536
(417) 991-2656 FAX: (217) 245-4149
Email: jstewart@bentonassociates.com

Other Offices In: 1 State

Rep(s): Joshua Stewart

Activities: City/Land Planning, Construction Services, Dams, Design/Build, Drainage/Erosion/Flood Control, Electrical Engineering, Environmental Studies, Foundation Structures, Harbors/Waterfront Structures, Industrial Engineering, Industrial Waste Treatment, Instrumentation/Process Control, Land Reclamation, Land Surveying, Materials Testing, Municipal Engineering, Parks/Recreational Facilities, Pipelines, Site Work/Buildings and Plants, Structural Engineering, Subdivision Planning, Transportation, Utilities, Wastewater Treatment, Water Treatment/Distribution/Storage.

BFA Inc.

37

103 Elm Street
Washington, MO 63090
(636) 239-4751

Email: rfrankenberg@bfaeng.com

URL: www.bfaeng.com

Rep(s): Raymond H. Frankenberg II, Rick G. Rohlfing, Mark R. Frankenberg

Activities: Commercial / Retail Shopping Development Design; Roadway Design; Trails and Sidewalks Design; Bridge Replacement Design Projects; Topographic Surveys; ALTA Surveys; As-Built Surveys; Construction State-out Marking; Flood Elevation Certificates; Letters of Map Amendments and Revisions (LOMA/LOMR); Hydrologic Modeling and Stormwater Design. Types of clients: Walmart, Spire Energy, Desco, Burger King, Total Access Urgent Care, Several local Municipalities.

Black & Veatch

405 / 6,940

8400 Ward Parkway
P.O. Box 8405
Kansas City, MO 64114-0405
(913) 458-2000 FAX: (913) 458-9197
Email: info@bv.com

URL: www.bv.com

Branch Office:
16305 Swingley Ridge Road, Suite 230
Chesterfield, MO 63017
(636) 536-5800

Other Offices In: 25 States

Rep(s): Bently Green, Mike Orth, Kevin Harder, Sean Borst, Paul Rieger, Jeff Henson

Activities: Specializes in infrastructure development in energy, water, telecommunications, transportation, federal, management consulting and environmental markets. Complete study and design services for water supply, treatment and distribution; biosolids master planning and facilities design, wastewater collection, treatment, reuse, and disposal; telecommunication facilities; cellular phone towers and equipment; solid waste management; tunnels; drainage and flood control; community and regional planning; transportation; bridges, intelligent transportation services (ITS), and highways, resource recovery; marine and hydrology engineering; electric power generation, transmission, distribution and related electric system requirements; rate studies, financial planning and management studies; industrial plant and process design; facilities for national defense; and commercial and institutional building design.

BranchPattern, Inc.

33 / 94

1508 Grand Boulevard
Kansas City, MO 64108
(800) 200-9160
Email: rick.m@branchpattern.com
URL: www.branchpattern.com

Other Offices In: 4 States

Rep(s): Rick Maniktala

Activities: Mechanical, electrical and plumbing for commercial, educational, city, state, federal, correctional, industrial and health care clients, provide engineering, consulting, design, feasibility & environmental studies, indoor air quality; substation and primary distribution, co-generation, fire and life safety.

Minority Business Enterprise

Brown and Caldwell

5 / 1,570

7733 Forsyth Boulevard, Suite 1100
Clayton, MO 63105
(314) 296-6143
Email: dyates@brwnncald.com
URL: www.brownandcaldwell.com

Other Offices In: 30 States

Rep(s): Dave Yates, Jeff Theerman

Activities: BC provides full-service design in the following service areas: wastewater/reclamation, water supply and treatment, water resources / stormwater, conveyance infrastructure, program / construction management, design build, compliance and permitting, remediation / waste management, operations and maintenance. Types of clients include private sector industrial and municipal.

Burns & McDonnell

3,343 / 6,605

9400 Ward Parkway
Kansas City, MO 64114-3319
(816) 333-9400 FAX: (816) 822-4320
URL: www.burnsmcd.com

Branch Office:

425 S. Woods Mill Road, Suite 300
Chesterfield, MO 63017
(314) 682-1500 FAX: (314) 682-1600

Other Offices In: 31 States

Rep(s): Michael DeBacker, Paul Fischer, David G. Yeamans, Ray Kowalik, Ron Coker, Breck Washam

Activities: Comprehensive professional engineering and design-build services for private industry and government. Major service sectors include: aviation; bridge design; civil works; community development; air quality; transportation; hazardous and solid waste management; water supply and water resources; stormwater management and flood control; wastewater; environmental studies; military and defense facilities, commercial, institutional, & industrial facilities; security systems; industrial energy; power generation, transmission, and distribution; chemical process; petrochemicals and food, management services, healthcare and research facilities.

Bob D. Campbell & Company, Inc Structural Engineers

25

4338 Belleview
Kansas City, MO 64111-3515
(816) 531-4144 FAX: (816) 531-8572
Email: info@bdc-engrs.com
URL: www.bdc-engrs.com

Rep(s): Michael J. Falbe, Chris Boos, Richard Crabtree, Wayne Davis

Activities: Complete structural engineering services for design of structural systems and buildings; including office, parking garages retail, school, hospital, industrial and municipal buildings along, with special framing systems for industry and architectural expression. In addition to new construction and existing facility renovation, Bob D. Campbell and Company provides full support services for owners and contractors/construction industry through existing building evaluation, peer review, special inspection and specialized construction engineering.

CBB

27 / 29

12400 Olive Boulevard, Suite 430
St. Louis, MO 63141
(314) 878-6644
Email: yanamanamanda@cbbtraffic.com
URL: www.cbbtraffic.com

Other Offices In: 1 State

Rep(s): Srinivasa Yanamanamanda, Chris Brammeier, Lee Cannon, Shawn Leight

Activities: Traffic studies and planning, transportation modeling, intersection design, roadway design, signal design, roundabouts, construction review and inspection, arterial operations, signal timing and coordination, signal turn-ons and programming, freeway studies, bicycle and pedestrian system planning and design, transit studies, ITS. Types of clients include DOTs, private businesses, developers, government agencies, architects, cities and municipalities, engineering firms, and landowners.

Certified Small Business

CDG Engineers

65 / 70

One Campbell Plaza
St. Louis, MO 63139-1781
(314) 781-7770 FAX: (314) 781-9075
Email: jellington@cdgengineers.com
URL: www.cdgengineers.com

Other Offices In: 1 State

Rep(s): Jay Ellington, Tim Nugent, Stephen Hilderbrand

Activities: St. Louis-based organization working for utility, mining, industrial, public works and infrastructure clients. Firm expertise includes power generation and industrial projects, bulk materials handling, electrical power and controls, buildings, roads and bridges, sanitary sewer and storm water, parking facilities, recreational facilities including pedestrian and bikeway trails, streetscape enhancements. Specialized design technology services including laser scanning and drone creation of point clouds, and BIM.

CDM Smith

64 / 3,240

8080 Ward Parkway, Suite 100
Kansas City, MO 64114
(816) 444-8270 FAX: (816) 444-8232
Email: burnscl@cdmsmith.com
URL: www.cdmsmith.com

Other Offices In: 39 States

Rep(s): Chris Burns, Jessi Veach

Activities: CDM Smith is comprised of more than 5,000 employees whose unwavering focus remains on creating innovative and lasting solutions that improve environmental value, quality of life and economic prosperity. With more than \$1B in annual revenues, we maintain the size, stability and resources to successfully undertake a diverse range of projects, applying local knowledge through a network of more than 100 offices worldwide, while leveraging the full resources and expertise of our global staff. CDM Smith provides integrated solutions in water, environment, transportation, energy and facilities to public and private clients worldwide. As a full-service consulting, engineering, construction, and operations firm, we deliver exceptional client service, quality results and enduring value across the entire project life cycle.

Civil Design, Inc.

56 / 97

5220 Oakland Avenue
St. Louis, MO 63110
(314) 863-5570 FAX: (314) 863-5578
Email: vlarose@civildesigninc.com
URL: www.civildesigninc.com

Other Offices In: 3 States

Rep(s): Vicki LaRose, Dennis LaRose, Tricia Bohler

Activities: CDI provides comprehensive civil engineering and surveying services for Infrastructure + Analytics, Site Development, Structures, Transportation and Water Resources projects. Our capabilities range from pre-project planning, asset mapping and management, site analysis and location studies, hydraulic analysis, storm water drainage studies and design, detention/retention design, environmental documentation, urban and rural road design, utility extensions / relocations, construction permit coordination acquisition, rezoning and use permit presentations, and construction documents. Types of clients include architects, DOT's, MSD, etc.

*Disadvantaged Business Enterprise
Women Business Enterprise
Certified Small Business*

CM Archer Group, P.C. dba Archer-Elgin

19

310 East 6th Street
Rolla, MO 65401
(573) 364-6362 FAX: (573) 364-4782
Email: jmedows@cmarcher.com
URL: www.archer-elgin.com

Rep(s): Jeff Medows

Activities: CM Archer Group is a full-service consulting engineering, surveying and architectural design firm located in Rolla, Missouri. Our in-house multi-disciplined design capabilities allow us to provide our clients with a comprehensive range of services in the areas of water, wastewater, transportation, environmental, hydrology, hydraulic structures, stormwater management, structural design and analysis, electrical distribution, infrastructure planning, regulatory review, rate evaluations, land surveys, construction staking, as-built mapping, site development and GIS. Types of clients include municipalities, counties, developers, architects and private clients.
Certified Small Business

Cole & Associates, Inc.

36 / 66

The Powerhouse at Union Station
401 S. 18th Street, Suite 200
St. Louis, MO 63103
(314) 984-9887
Email: jharshbarger@colestl.com
URL: www.colestl.com

Branch Office:

1520 S. Fifth Street, Suite 307
St. Charles, MO 63303
(636) 978-7508

Other Offices In: 2 States

Rep(s): Kevin E. Riggs

Activities: Providing civil engineering, surveying, landscape architecture, planning, GIS, and ADA transition planning for residential, commercial, and municipal clients as well as builders, developers, governmental agencies, commissions, and districts.

Cook, Flatt & Strobel Engineers, P.A.

33 / 102

1421 E. 104th Street, Suite 100
Kansas City, MO 64131
(816) 333-4477 FAX: (816) 333-6688
Email: cfse@cfse.com
URL: www.cfse.com

Branch Office:

2017 W. Woodland Street
Springfield, MO 65807
(417) 986-4067

Email: clepage@cfse.com / tpolk@cfse.com

Branch Office:

P. O. Box 1932
Jefferson City, MO 65101
(573) 415-7813

Other Offices In: 1 State

Rep(s): Michelle Mahoney, Charlie LePage, Sabin Yanez, Angelo Mannino

Activities: Cook, Flatt & Strobel Engineers, P.A. provide a wide range of engineering services including civil/site, traffic, transportation, structural, utility engineering, and land planning. Working on assignments throughout Kansas, Missouri, Arkansas and Oklahoma, our clients include state agencies, county and city governments, business and industry.

Counsilman-Hunsaker & Associates, Inc.

24 / 56

12851 Manchester Road, Suite 120
St. Louis, MO 63131
(314) 894-1245
Email: chrismoran@chh2o.com
URL: www.counsilmanhunsaker.com

Other Offices in: 3 States

Rep(s): Chris Moran

Activities: Counsilman-Hunsaker specializes in the design, engineering and management consulting of commercial swimming facilities across the country and abroad. Types of clients include municipalities, universities, K-12.

Crawford, Murphy & Tilly, Inc.

108 / 390

Gateway Tower
1 Memorial Drive, Suite 500
St. Louis, MO 63102
(314) 436-5500 FAX: (314) 436-0723
Email: dmeckes@cmtengr.com
URL: www.cmtengr.com

Branch Office:

1631 West Elfindale
Springfield, MO 65807
(417) 869-6009 FAX: (417) 869-8129
Email: sprange@cmtengr.com

Branch Office:

1627 Main Street, Suite 200
Kansas City, MO 64108
(816) 272-8318
Email: tsander@cmtengr.com

Other Offices In: 5 States

Rep(s): Dan Meckes, Kevin Fuller, Ty Sander, Steve Prange, Raed Armouti

Activities: Crawford, Murphy & Tilly, Inc., consulting engineers is a professional corporation offering engineering, environmental, and planning services with specialization in aviation, surface transportation, water resources, civil/site engineering, and construction management. Projects are primarily civil engineering in nature, but also include assignments in the mechanical, electrical and architectural disciplines.

Cross Discipline Engineering, LLC

10

63 Truman Road, Suite 100
Marshfield, MO 65706
(417) 859-4441
Email: jbridges@crossdiscipline.com
URL: www.crossdiscipline.com

Rep(s): Jeremiah Bridges

Activities: Power System Design – Substations, Transmission Line, Distribution Line, Construction Work Plans, etc. Types of clients include electrical cooperatives, utilities, investor owned utilities, etc.

Donohue & Associates, Inc.

4 / 110

12400 Olive Boulevard, Suite 120
Chesterfield, MO 63017
(636) 536-7042 FAX: (636) 536-7043
Email: rneath@donohue-associates.com
URL: www.donohue-associates.com

Other Offices In: 5 States

Rep(s): Robert J. Neath

Activities: Consulting engineering for all phases of water, wastewater, and stormwater projects. Types of clients include municipal and industrial.

DOTec Corp

30

424 Jefferson Street
St. Charles, MO 63301-2834
(636) 724-9872 FAX: (636) 493-9332
Email: alg757@yahoo.com
URL: www.dotecengineering.com

Rep(s): Ildefonso Gonzalez, Cameron Giering, Heather Brewer

Activities: Application of scientific principles to design or develop structures or manufacturing processes. Design, Analysis of Code compliant structures, mechanical, electrical, plumbing, in support of design of residential and commercial projects. Daily use of the ASCE, IME, Electrical codes. Design drafting of houses, small commercial and limited residential projects. Types of clients include commercial, residential, industrial - i.e., Bridge Brothers, BriteSpan, Lawrence Fabrics (bridges for pedestrians, frame structures, awnings).

EDM Incorporated

220 Mansion House Center
St. Louis, MO 63102-1902
(314) 231-5485 FAX: (314) 231-8167
Email: edm@edm-inc.com
URL: www.edm-inc.com
Other Offices In: 1 State

Rep(s): Gholam Masoumy, Len Madalon, Ramona Nicula, Greg Raffaele

Activities: Civil, structural, architectural, electrical, HVAC, plumbing and fire protection services are provided to a diverse group of governmental, commercial, institutional and industrial clients. Projects include major and special structures, roads, bridges, site engineering, power and lighting in buildings, high voltage electrical service, space conditioning, energy conservation, fire suppression systems, feasibility studies, riverfront development, and expert testimony. Services include project management, engineering and architectural consultation, and design build engineering support.

23

EFK Moen, LLC

13523 Barrett Parkway Drive, Suite 250
Ballwin, MO 63021
(314) 394-3100 FAX: (314) 394-3199
Email: deilers@efkmoen.com
URL: www.efkmoen.com

Branch Office:

2536 S. Old Highway 94, Suite 226
St. Charles, MO 63303
(636) 244-3747

Other Offices In: 2 States

Rep(s): Linda Moen, Darrell Eilers, P.J. Kronlage, Chris Linneman

Activities: EFK Moen is a civil engineering and professional land surveying firm with an emphasis in roadway-highway-interstate and bridge designs. Services are provided to a wide range of public and private sector clients including state DOT's, counties and municipalities; engineering firms, design-build teams, universities and commercial developers. Our services include professional land surveying, structural-bridge design, stakeholder involvement plans, feasibility-conceptual studies, traffic studies, interchange design, geometric layout for roadways, trails and sites, ADA compliance, hydraulic studies, stormwater drainage design, detention design, erosion control, traffic signal design, roadway and interstate signing plans, roadway lighting, construction staging, and construction management services.

Certified Small Business

Disadvantaged Business Enterprise

Women Business Enterprise

35 / 54

Engineered Corrosion Solutions

11336 Lackland Road
St. Louis, MO 63146
(314) 432-1377 FAX: (314) 439-9411
Email: info@ecscorrosion.com
URL: www.ecscorrosion.com

Rep(s): Lucas Kirn, Jeff Kochelek

Activities: Engineered Corrosion Solutions (ECS) is a corrosion engineering firm specializing in helping clients understand and manage risk associated with leaking fire sprinkler systems. The risks associated with corrosion in fire sprinkler systems include life safety risk, structure risk, property risk and business continuity risk. Corrosion in fire sprinkler systems leads to plugging problems, reduced sprinkler performance, water leak damage and reduced service life of the systems. Our goal is to define and understand the root causes of corrosion in fire sprinkler systems and to provide devices and services that can bring about a reduction in those risks and associated costs. ECS offers a suite of corrosion management devices and treatment programs that address the needs of all water-based fire sprinkler systems. Wet Pipe Nitrogen Inerting (WPNI) and Dry Pipe Nitrogen Inerting (DPNI) technology from ECS completely controls internal corrosion. ECS also offers a suite of analytical and assessment services to identify the root causes of corrosion and meet the fire sprinkler system inspection requirements by the NFPA. These services include internal video scoping, system failure review, water and deposit analysis, and failed pipe analysis.

13

Engineering Design Source, Inc. (EDSI)

16141 Swingley Ridge Road, Suite 300
Chesterfield, MO 63017
(636) 537-5585 FAX: (636) 537-0275
Email: bb@engdesignsource.com
URL: www.engdesignsource.com
Other Offices In: 1 State

Rep(s): Brett Brooks, George John, Rick Olson

Activities: Civil engineering design work including structural / bridge design, site and grading plans, roadway and highway design, traffic modeling, traffic studies, traffic signal plans, storm & sanitary sewer, surveying, construction inspection, hydraulic modeling, drainage design, and program management. Types of clients: government agencies, design consultants.

Disadvantaged Business Enterprise

Minority Business Enterprise

25 / 27

Engineering Surveys and Services

1113 Fay Street
Columbia, MO 65201
(573) 449-2646 FAX: (573) 499-1499
Email: rkasmann@ess-inc.com
URL: www.ess-inc.com

Rep(s): Ross Kasmann, Dave Bennett, Ben Ross, Josh Lehmen

Activities: Since 1954, Engineering Surveys & Services has delivered solutions to support the built environment of mid-Missouri. We serve clients in the public sector and private industry from Missouri offices in Columbia, Jefferson City and Sedalia. Each location provides civil and environmental engineering planning and design, land surveying, geotechnical services, and construction observation/materials testing to help our clients/partners deliver a variety of projects in transportation, water (drinking, storm, waste), energy, and site development for institutional and commercial facilities. Types of clients include state and local governments, developers, educational institutions, industries, architects, engineering firms, non-profit organizations.

47

Farnsworth Group, Inc.

20 Allen Avenue, Suite 200
St. Louis, MO 63119-2304
(314) 962-7900 FAX: (314) 962-1253
Email: goconnor@f-w.com
URL: www.f-w.com

Other Offices In: 7 States

Rep(s): Michelina Hansel, Greg O'Connor, Doug Bonner

Activities: Farnsworth Group is a multi-discipline E/A firm providing design and other professional/technical services to a diverse range of public and private clients including governmental, corporate, institutional, commercial, industrial, railroad, residential, healthcare, educational and recreational. Major services include civil and structural engineering, transportation and railroad engineering, environmental engineering, mechanical, plumbing and electrical engineering, oil and gas engineering, architecture, telecommunications, commissioning, land surveying, and construction management. Special services include total building commissioning, planning, zoning, energy audits, traffic signals, sustainable and LEED Consulting, fire protection, stormwater management and hydraulic analysis, grant applications and project financing. Farnsworth Group is an ENR Top 250 Design Firm.

85 / 520

Four Points Land Surveying & Engineering, Inc.

17 Northport Plaza
Hannibal, MO 63401
(573) 406-5533
Email: kyle@fourpointssurvey.com
URL: www.fourpointssurvey.com

Other Offices In: 2 States

Rep(s): Kyle Pociask, Norman Ellerbrock, Darleen Groner, Scott Lentz

9 / 13

Activities: Potable water source, treatment, storage and distribution planning and design. Wastewater collection, pumping, and treatment planning and design. Site development; Storm water development. Types of clients include public works, municipalities, water districts, developers, private individuals, etc.

Frontenac Engineering Group, Inc.

16

2725 Sutton Boulevard
St. Louis, MO 63143
(314) 644-2200 FAX: (314) 644-0645
Email: steven@fe-stl.com
URL: www.fe-stl.com
Rep(s): Steven Miller

Activities: Site analysis, site development design, roadway design/reconstruction, utility/sewer main extension and replacement, zoning permitting, BMP inspections, flood plain studies, feasibility studies, contract administration, structural inspection/evaluation, cost estimation, project management, seismic rehabilitation, retrofitting/code compliance, on-site construction, structural analysis and design, insurance claims. Types of clients include institutions, municipalities, parks, hospitals, army/DOD wavehouses, commercial, schools/colleges.

Garver

35 / 1,168

7509 NW Tiffany Springs Parkway, Suite 200
Kansas City, MO 64153
(816) 298-6465
Email: mlspayd@garverusa.com
URL: www.garverusa.com
Branch Office:
230 Bemison Avenue, Suite 500
St. Louis, MO 63105
(314) 269-1057

Other Offices In: 12 States

Rep(s): Mike Spayd

Activities: Garver provides consultant services for aviation, transportation, water, energy, industrial, development, federal, architecture, survey and construction engineering and inspection projects. Types of clients include DOT, Municipal, Contractors, and Counties.

GBA, Inc.

25 / 289

Mainmark Building, Suite 800
1627 Main Street
Kansas City, MO 64108-1300
(816) 421-1300 FAX: (816) 842-1138
Email: gba@gbateam.com
URL: www.gbateam.com
Branch Office:
119 S. Main Street
St. Charles, MO 63301
(636) 240-2444
Email: merdtmann@gbateam.com

Branch Office:
16305 Swingley Ridge Road, Suite 103
Chesterfield, MO 63017
(314) 231-0100

Other Offices In: 6 States

Rep(s): John Cooper, Jim Jarrett, Mike Erdtmann

Activities: Full-service engineering and architectural disciplines in civil, structural, mechanical, electrical, fire protection, sanitary, transportation and traffic engineering, architecture, land surveying, construction management/observation, and environmental. Infrastructure markets served include transportation, water environment, and private land development. Building markets served include life sciences, critical facilities, corporate office, municipal facilities and various other building types. Clients include federal, state, municipal, county as well as the private sector.

GeoEngineers, Inc.

14 / 375

2155-A W. Chesterfield Boulevard
Springfield, MO 65807
(417) 831-9700 FAX: (417) 831-9777
Email: jrobison@geoengineers.com
URL: www.geoengineers.com
Other Offices In: 8 States

Rep(s): Jonathan L. Robison, Mark A. Miller

Activities: GeoEngineers, founded in 1980 and headquartered in Seattle, Washington, is an integrated earth science and technology firm with 16 offices in Missouri, Idaho, Washington, Oregon, California, Utah, North Carolina and Louisiana. GeoEngineers specializes in crafting unique geotechnical, environmental, and ecological solutions for the energy, transportation, water and natural resource, federal, and development sectors. The GeoEngineers' Springfield, Missouri office specializes in geotechnical investigations and engineering design projects; trenchless technologies; geophysical evaluations; environmental engineering, investigation, and compliance; and construction observation services. In fact, GeoEngineers is currently ranked as one of the top 25 trenchless design firms in the nation having completed hundreds of horizontal directional drilling (HDD) and Direct Pipe® projects throughout the United States and as far away as Africa. GeoEngineers also assists with geological hazard evaluations and permitting along new and existing linear corridor routes such as pipelines, highways, railroads, and transmission lines.

Geotechnology, LLC

99 / 280

11816 Lackland Road, Suite 150
St. Louis, MO 63146
(314) 997-7440 FAX: (314) 997-2067
Email: jweinhold@geotechnology.com
URL: www.geotechnology.com

Other Offices In: 8 States

Rep(s): Joel Weinhold, Edmond D. Alizadeh, Frank Callanan, Matt McQuality, Pam Hobbs

Activities: Geotechnology provides a comprehensive range of applied earth and environmental sciences; geotechnical engineering; soils, rock and construction materials testing; non-destructive steel testing; deep foundation testing (PDA, PIT, CSL); geophysics applied to karst exploration, levee evaluation and geologic site characterization; subsurface utility engineering; wetlands consulting; water resources and drilling. Technical expertise, thorough knowledge of regulations, and strong management capabilities form a solid foundation for resolution of the most complex and challenging engineering issues. Responsiveness is aided through one of the most comprehensive materials testing labs in the Midwest, AASHTO accredited and USACE-validated testing laboratories, 20 drill rigs, a CPT rig, a 3230 GeoProbe combo rig, NDT and geophysical equipment.

GHD, Inc.

8 / 2,300

11971 Westline Industrial Drive, Suite 101
St. Louis, MO 63146
(314) 438-1878
Email: john.killips@ghd.com
URL: www.ghd.com

Other Offices In: 15 States

Rep(s): John Killips, Bob Januska

Activities: GHD is one of the world's leading professional services companies operating in the global markets of water, energy and resources, environment, property and buildings, and transportation. We provide engineering, environmental, advisory, digital, and construction services to private and public sector clients. Established in 1928 and privately owned by our people, GHD operates across five continents - Asia, Australia, Europe, North and South America - and the Pacific region. We employ more than 10,000 people in 200+ offices to deliver projects with high standards of safety, quality and ethics across the entire asset value chain. Driven by a culture of client service excellence, we connect the knowledge, skill and experience of our people with innovative practices, technical capabilities.

ities and robust systems to create lasting community benefits. Committed to sustainable development, GHD improves the physical, natural, and social environments of the many communities in which we operate. We are guided by our workplace health, safety, quality, and environmental management systems, which are certified to the relevant international standards (ISO and OHSAS). In alignment with the global demands of water, energy and urbanization, our aim is to exceed the expectations of our clients and contribute to their success.

GREDELL Engineering Resources, Inc. 15 / 18

1505 E. High Street
Jefferson City, MO 65101
(573) 659-9078 FAX: (573) 659-9079
Toll Free #: (855) 420-3831
Email: tomg@ger-inc.biz
URL: www.ger-inc.biz
Branch Office:
636 W. Republic Road, Bldg. D, Suite D-100
Springfield, MO 65807
(417) 890-6200 FAX: (417) 351-5550
Toll Free #: (855) 417-2617
Email: rickr@ger-inc.biz

Other Offices In: 1 State

Rep(s): Thomas R. Gredell, Bruce Dawson

Activities: GREDELL Engineering Resources, Inc. is a Missouri-based firm that is licensed in Missouri, Kansas, Iowa and Illinois. We provide civil, geotechnical and environmental engineering and geologic studies, including environmental design; civil engineering infrastructure design; geotechnical design; and geologic investigations. Civil projects include geotechnical investigation and design; stormwater management and design; wetlands treatment; streams and lakes designs and renovations; roadway and bridge design and bridge scour design; and site development. Environmental projects include municipal/industrial containment/management; subsurface/ground-water investigations; wastewater collection and treatment systems; river and streambank stabilization; environmental permitting, compliance and management systems for solid waste, hazardous waste, air pollution residuals, water, wastewater; site remediation/voluntary clean-up; risk-based corrective action; construction observation; SWPPP and SPCC plans. Clients include governmental entities (cities, counties, and state), private companies, electric utilities and limestone producers.

Certified Small Business

Hanson Professional Services Inc. 44 / 543

600 Washington Avenue, Suite 950
St. Louis, MO 63101
(314) 770-0467 FAX: (314) 770-0428
Email: hgotschall@hanson-inc.com
URL: www.hanson-inc.com

Branch Office:
1001 E. 101st Terrace, Suite 120
Kansas City, MO 64131
(913) 214-3180

Branch Office:
150 S. Fifth Street, Suite 220
St. Charles, MO 63303
(314) 770-0467

Other Offices In: 10 States

Rep(s): Howard Gotschall

Activities: Hanson Professional Services Inc. is a national, employee-owned consulting firm providing a full range of engineering planning and allied services to clients. The firm provides civil/structural and transportation engineering; railroad and airport planning and design; construction and data management; design-build; economic development assistance; geotechnical, environmental and waste management services; hydrologic and hydraulic engineering; surveying; land acquisition; facility and freight logistics; mechanical and electrical engineering; and inland port planning and engineering.

HDR

10450 Holmes Road, Suite 600
Kansas City, MO 64131-3471
(816) 360-2700 FAX: (816) 360-2777
Email: hdr@hdrinc.com
URL: www.hdrinc.com

Other Office:

3741 NE Troon Drive
Lee's Summit, MO 64064
(800) 495-9830 FAX: (816) 554-3061

Branch Office:

401 S. 18th Street, Suite 300
St. Louis, MO 63103
(314) 425-8300 FAX: (314) 425-8301

Branch Office:

187 E. David
P.O. Box 969
Forsyth, MO 65653
(417) 546-3218 FAX: (417) 546-5324

Branch Office:

2139 E. Primrose, Suite E
Springfield, MO 65804
(417) 865-4083 FAX: (417) 865-4085

Other Offices In: 33 States

Rep(s): Barry O. Rolle, Cory Imhoff, Joe Drimmel, Stan Christopher, Patrick Young

Activities: Founded in 1917, HDR is an architectural, engineering and consulting firm that excels at complex projects and solving challenges for our clients. With locations across the nation and abroad, we deliver more than 50 different design and scientific disciplines. The strength of this professional network allows us to deliver big-company resources with small company service. Our operating philosophy is to be an expertise-driven national firm that delivers tailored solutions through a strong local presence. Our ability to draw upon company-wide resources and expertise is a great strength in meeting and exceeding our clients' expectations. In 2008, HDR acquired Archer Engineers, a well-respected full service Environmental/Civil Engineering consulting firm. Archer traditionally has provided outstanding service to a wide range of governmental, industrial and private development clients. HDR has full services in water and wastewater systems, transportation systems, environmental and resource management, land planning, surveying, construction administration, and design/build services.

Hg Consult, Inc.

27 / 51

9111 NE 79th Street
Kansas City, MO 64158
(816) 912-4720
Email: eharrison@HgCons.com
URL: www.HgCons.com

Other Offices In: 3 States

Rep(s): Earl Harrison, Steve Wells

Activities: Hg Consult, Inc. practices general Civil Engineering and Planning including transportation, traffic, utilities, stormwater, wastewater, land development, and municipal engineering. The ownership background includes experience in the design of freeways, urban arterials, underground utilities, planning studies, traffic studies, street lighting, and waste / stormwater collection systems. Our client base includes local, county, and state governments, private developers, and other consultants.

Minority Business Enterprise

HNTB Corporation

519 / 4,021

715 Kirk Drive
Kansas City, MO 64105
(816) 472-1201 FAX: (816) 472-4060
Email: kwallace@hntb.com; wfeuerborn@hntb.com
URL: www.hntb.com

Branch Office:

211 North Broadway, Suite 950
St. Louis, MO 63102
(314) 241-2808 FAX: (314) 241-1914

Other Offices In: 27 States

Rep(s): Kevin Wallace, Chris Price, Wayne Feuerborn, Jeff Smith,
Tirzah Gregory, Gretchen Ivy, Marc Whitmore

Activities: HNTB Corporation is an employee-owned infrastructure firm serving public and private owners and contractors. With more than a century of service in the U.S., HNTB understands the life cycle of infrastructure and addresses clients' most complex technical, financial and operational challenges. Professionals nationwide deliver a full range of infrastructure-related services, including award-winning planning, design, program management and construction management. For more information, visit www.hntb.com.

Horner & Shifrin, Inc.

92 / 136

401 S. 18th Street, Suite 400
St. Louis, MO 63103
(314) 531-4321 FAX: (314) 531-6966
Email: srdonahue@hornersshifrin.com
URL: www.hornersshifrin.com

Branch Office:

4061 Highway PP, Suite 1
Poplar Bluff, MO 63901
(573) 727-9666 FAX: (573) 727-9648

Branch Office:

101 Laura K Drive, Suite 101
O'Fallon, MO 63366
(636) 329-9296

Other Offices In: 1 State

Rep(s): Steve Donahue, Michael Banashek, Jarrett Jasper

Activities: A 100-percent employee-owned, award-winning, multidisciplinary engineering firm focused on providing our clients with exceptional solutions and service since 1933. Offering a full range of engineering expertise, including water supply, treatment and distribution systems; wastewater collection, lift station and treatment facilities; roads, streets, highways, bridges and interchanges; ports and site development; GIS design and hosting; storm water and flood protection; mechanical, electrical, plumbing, and fire protection studies and design services; and construction engineering services.

Howe Company, LLC

10

804 E. Patton Street
Macon, MO 63552
(660) 395-4693 FAX: (660) 395-4694
Email: shannon@howecompany.com
URL: www.howecompany.com

Rep(s): Shannon J. Howe

Activities: Local transportation projects including roads, streets, and bridges. Structural engineering for temporary and permanent structures. Water and wastewater engineering services include system evaluations and improvements. Experienced with project programming, surveying, studies, preliminary design, right of way, final design, bidding services, construction observation, construction contract administration, and project close out. Types of clients include state government, county governments, municipalities, rural communities, schools, port authorities, industrial development authorities, contractors, private developers, companies, and private individuals.

HR Green, Inc.

40 / 686

16020 Swingley Ridge Road, Suite 205
St. Louis, MO 63017
(636) 519-0990 FAX: (636) 519-0996
Email: jdohrmann@hrgreen.com
URL: www.hrgreen.com

Branch Office:

1475 Fairgrounds Road, Suite 100
St. Charles, MO 63301
(636) 519-0990 FAX: (636) 519-0996

Other Offices In: 8 States

Rep(s): Jason Dohrmann, Dan Shane, Dave Maxwell, Josiah Holst

Activities: Established in 1913, HR Green, Inc. is employee owned. We collaborate across geographies and markets to provide engineering, technical, and management solutions that build communities and improve lives for our clients and the people they serve. We provide the following comprehensive services: Transportation, Water, Governmental Services, Land Development, Environmental and Construction.

Hutchison Engineering, Inc. (HEI)

3 / 85

8965 Highway 36
Hannibal, MO 63401
(573) 240-9577
Email: mpurol@hutchisoneng.com
URL: www.hutchisoneng.com

Other Offices In: 1 State

Rep(s): Michael Purol, Jim Burke, Shane Larson, Tom Winkelman

Activities: Established in 1913, HR Green, Inc. is employee owned. We collaborate across geographies and markets to provide engineering, technical, and management solutions that build communities and improve lives for our clients and the people they serve. We provide the following comprehensive services: Transportation, Water, Governmental Services, Land Development, Environmental and Construction.

IMEG Corp.

97 / 1,912

15 Sunnen Drive, Suite 104
St. Louis, MO 63143-3819
(314) 645-1132 FAX: (314) 645-1173
URL: www.imegcorp.com

Other Offices In: 12 States

Rep(s): Steve Rhoades

Activities: IMEG is one of the largest engineering consulting firms in the U.S. specializing in building high-performance structures, infrastructure, and strong client relationships. With more than 40 offices and 1,300 team members, we serve regions and markets, putting relationships first while delivering the highest quality work and expertise.

Jacobs

280 / 70,000

One Financial Plaza
501 North Broadway
St. Louis, MO 63102
(314) 335-4000 FAX: (314) 335-5141
Email: michael.mccarty@jacobs.com
URL: www.jacobs.com

Branch Office:

Two Pershing Place
2300 Main, Suite 325
Kansas City, MO 64108
(816) 421-5550 FAX: (816) 421-5560
Email: dhuck@jacobs.com

Other Offices In: 47 States

Rep(s): J. Finke, J. Kokal, M. McCarty, G. Horn

Activities: Complete architecture and engineering professional services for development, design, construction and operations in these markets: Transportation, Federal, Mission Critical, Healthcare, Higher Education, Sports & Recreation, Water and Wastewater, Industrial, and Public Works. The company provides these services to public and private sector clients world-wide.

Juneau Associates, Inc., P.C.**6 / 52**

330 N. Fourth Street
St. Louis, MO 63102
(314) 241-4444 FAX: (314) 909-1331
Email: wherndon@jaipc.com
URL: www.jaipc.com

Other Offices In: 1 State

Rep(s): Wesley W. Herndon, Charles E. Juneau

Activities: Bridge replacement & bridge repair projects including topographic surveys, hydraulics, preparation of preliminary, right-of-way and final construction documents. Bridge evaluation projects including routine, in-depth and fracture critical inspections. Design and detailing of complex and unusual industrial foundations. Seismic retrofit of steel structures. Design and detailing of tunnel structures. Types of clients include municipalities, counties, State Departments of Transportation, industries.

Certified Small Business

Veteran Owned Small Business (VOSB)

KimHEC LLC**9**

5326 Southwest Avenue
St. Louis, MO 63139
(314) 276-9575
Email: kim.cole@kimhec.com
URL: www.kimhec.com

Rep(s): Kimberly A. Cole

Activities: KimHEC is a specialized Environmental Engineering Consulting firm which specializes in pretreatment program development and implementation. KimHEC assists in local limit evaluations, enforcement response plans, and implementation of pretreatment programs. We provide data management services associated with pretreatment programs and wastewater treatment plant operations.

Women Business Enterprise

Kimley-Horn and Associates, Inc.**32 / 7,000**

805 Pennsylvania Avenue, Suite 150
Kansas City, MO 64105
(816) 652-0350
Email: jeff.mckerrrow@kimley-horn.com
URL: www.kimley-horn.com

Other Offices In: 30 States

Rep(s): Jeff D. McKerrrow

Activities: Full-service engineering firm providing engineering, planning, and landscape architectural services. Types of clients include public sector (cities, counties, DOT's, transit agencies, port authorities) and private sector.

Klingner & Associates, P.C.**18 / 112**

4510 Paris Gravel Road
Hannibal, MO 63401
(573) 221-0020 FAX: (573) 221-0012
URL: www.klingner.com

Branch Office:

907 East Ash Street
Columbia, MO 65201
(573) 355-5988

Other Offices In: 2 States

Rep(s): Michael Klingner, Mark C. Bross, B. Joseph Sick

Activities: Klingner & Associates, P.C. is a multi-discipline engineering/architectural consulting firm established in 1905, currently employing over 110 people throughout six (6) offices in Missouri, Illinois and Iowa. Our talented and experienced staff provides civil, mechanical-electrical-plumbing, transportation, water/wastewater, water resources, geotechnical, environmental and structural engineering, planning, land surveying, architecture, landscape architecture and interior design. The staff includes licensed professional engineers, geologists, structural engineers, architects, landscape architects, interior designers, engineering technicians, construction inspectors, professional land surveyors, asbestos inspectors, and administrative support staff. Types of clients include individuals, industrial and commercial businesses, municipalities and government agencies.

Lamp Ryneearson, Inc.**35 / 180**

9001 State Line Road, Suite 200
Kansas City, MO 64114
(816) 361-0440 FAX: (816) 361-0045
Email: info@lampryneearson.com
URL: www.lampryneearson.com

Other Offices In: 2 States

Rep(s): Tony O'Malley, Dan Miller, Andy Smith, Laura Gray

Activities: Lamp Ryneearson, Inc. is an employee-owned multi-disciplined engineering and consulting firm providing quality professional services to municipalities, counties, state and federal governments, utility districts, institutional, and private clients throughout the Midwest. For over 60 years, clients have relied on our talented professional staff for community changing projects that fulfill our Purpose Statement, "Leaving a legacy of enduring improvements to our communities." Core markets include aquatic facilities, city engineering, drinking water, transportation engineering, stormwater, wastewater, planning, airport engineering, land development, architecture, land surveying, construction administration and GIS. Other services provided include NPDES permitting, design-build, sustainable design, landscape architecture, redevelopment and structural engineering. Offices in Kansas City, MO, Omaha, NE, Fort Collins, CO, and Lakewood, CO.

Lee & Company LLC**8**

1612 E. Elm Street
Harrisonville, MO 64701
(816) 805-3546
Email: gary.lee@lee-engineers.com
URL: www.lee-engineers.com

Rep(s): Gary M. Lee

Activities: Specializes in cutting edge infrastructure developments, independent engineering review services, and reliability engineering for a diverse group of public and private clients across the country. Projects range from comprehensive sustainable development design to the rapidly growing alternative fuels market to state-of-the-art water and wastewater systems. Provide a comprehensive set of engineering, development and management services including project planning, financing, design, permitting/regulatory affairs, construction services and ongoing equipment reliability engineering that are necessary for the success of any project.

Leigh & O'Kane, L.L.C.**9**

250 NE Mulberry Street, Suite 201
Lee's Summit, MO 64086
(816) 444-3144 FAX: (816) 444-9655
Email: abush@leok.com
URL: www.leok.com

Rep(s): Amanda Bush, Adam O'Kane

Activities: Structural engineering for vertical and infrastructure construction for commercial, industrial and public institutions. Projects include bridge and infrastructure design and inspections, hospitals, schools, universities, offices, churches, shopping centers, fire stations and community centers, correctional facilities, industrial manufacturing facilities, and civic centers. Material testing, resident inspections and special inspections during construction.

Disadvantaged Business Enterprise

Women Business Enterprise

Lochmueller Group**35 / 260**

411 North 10th Street, Suite 200
St. Louis, MO 63101
(314) 621-3395 FAX: (314) 621-3288
Email: ssmith@lochgroup.com
URL: www.lochgroup.com

Branch Office:

820 E. Main Street, Suite 207
St. Charles, MO 63301
(314) 621-3395 FAX: (314) 621-3288

Other Offices In: 3 States

Rep(s): Scott J. Smith, Laura Mwirigi Rightler

Activities: Civil engineering design and infrastructure planning firm providing services to both public and private clientele. Expertise includes travel demand modeling; traffic simulation modeling and analysis; transportation design (highway/roadway design; bridge design; traffic signal design); ROW appraisal and acquisition; environmental evaluation; and water resources engineering. Types of clients include state DOT's, municipalities, government agencies, private developers.

Lochner

30 / 600

16105 113th Street, Suite 107

Lenexa, KS 66219

(816) 945-5840 FAX: (816) 945-5841

Email: info@hwlochner.com

URL: www.hwlochner.com

Other Offices In: 16 States

Rep(s): Chris Flageolle, Mark L. Johnston, Matt Jacobs

Activities: Lochner is a full-service engineering, design and consulting firm. Our many disciplines include: Highway & Roadway Design, Structural Design, Construction Management and CEI Services, Airport Planning & Design, Multi-Modal Planning & Design, Hydraulics and Drainage Design, Municipal Services, Public-Private Partnership (P3) Services, Design-Build Services, Public Involvement, Context Sensitive Solutions, Planning & Environmental Services, Brownfields Services, Utility Coordination & Relocation, Traffic Engineering & Transportation Planning, Electrical, and Rail & Transit.

M3 Engineering Group PC

16 / 17

911 Washington Avenue, Suite 620

St. Louis, MO 63101

(314) 558-0699 FAX: (314) 588-9442

Email: marjorie.melton@m3eq.com

URL: www.m3eq.com

Rep(s): Marjorie L. Melton, Marc Eshelman

Activities: M3 Engineering Group P.C. (M3) is a consulting firm that provides engineering planning, design and LEED support for public and private clients in variety of areas of Civil and Environmental Engineering, including water, wastewater, stormwater, roadway, structural, site development, asset management, and sustainability.

Disadvantaged Business Enterprise

Minority Business Enterprise

Women Business Enterprise

McClure

80 / 220

2001 W. Broadway

Columbia, MO 65203

(573) 814-1568 FAX: (573) 814-1128

Email: amcvicker@mcclurevision.com

URL: www.mcclurevision.com

Branch Office:

1700 Swift, Suite 100

North Kansas City, MO 64116

(816) 756-0444 FAX: (816) 756-1763

Email: mkellam@mcclurevision.com

Branch Office:

107 Butler Street

P. O. Box 366

Macon, MO 63552-0366

(660) 385-6441 FAX: (660) 385-6614

Email: dstith@mcclurevision.com

Other Offices In: 4 States

Rep(s): Aaron McVicker, Cody Daily, Chris Sander

Activities: Engineering services including studies, design services and construction phase services for municipalities, governmental agencies and private clients. Projects include water and wastewater systems, transportation, traffic studies, parking lots, roadways, stormwater, downtown improvements, aviation and structural. Planning and design for industrial parks and private developments. Municipal

assistance with regulation establishment and enforcement, rate studies and reports. Structural includes bridges, new structures and existing structure evaluation. Boundary and topographic surveys.

MECO Engineering, Inc.

31 / 33

3120 Palmyra Road

Hannibal, MO 63401

(573) 221-4048 FAX: (573) 221-4377

Email: mecoh@mecoengineering.com

URL: www.mecoengineering.com

Branch Office:

2701 Industrial Drive

Jefferson City, MO 65102

(573) 893-5558 FAX: (573) 893-5404

Email: mecoic@mecoengineering.com

Branch Office:

110 West Adams, Suite 101

Branson, MO 65616

(417) 986-6445

Other Offices In: 1 State

Rep(s): Scott E. Vogler, James D. Bensman, Max F. Middendorf

Activities: Civil, structural, electrical and mechanical engineer, and land surveying services.

Midwest Environmental Consultants Co.

10

2009 E. McCarty Street, Suite 2

Jefferson City, MO 65101

(573) 636-9454 FAX: (573) 761-4200

Email: info@mecpc.com

URL: www.mecpc.com

Branch Office:

1350 East Kingsley, Suite E

Springfield, MO 65809

(417) 886-9200 FAX: (417) 886-9876

Email: blindsey@mecpc.com

Rep(s): Lindsey R. Henry

Activities: Midwest Environmental Consultants provides professional engineering services pertaining to environmental assessment, design, remediation, permitting and compliance. Service areas include Environmental Audits (on-site compliance audits); Air Quality (permitting, EIQs, ACC and MACT reporting, opacity observation); Environmental Assessments (Phase 1, Phase 2 and Phase 3); Water (NPDES permits, SPCC plans, SWPPP, low impact development, stormwater management, constructed wetlands); Solid Waste (landfills, transfer stations, planning, regulatory compliance); UST Closure (oversight, management, and reporting); Hazardous Waste (voluntary clean-up, risk assessment; site characterization and remediation); Risk Management Plans (RMPs); and Land Reclamation. Clients include private companies, industry, municipalities, trade associations, financial institutions, law firms, federal and state regulatory agencies.

Certified Small Business

Milestone Engineering, Inc.

7

1445 E. Republic Road, Suite 310

Springfield, MO 65804

(417) 893-6655 FAX: (417) 893-6666

Email: brad.tate@mei-eng.us

Rep(s): Bradley L. Tate

Activities: Civil engineering planning, design and construction inspection services to Municipal, DOT and private clients across the Midwest. The majority of our projects include freight rail projects, conceptual planning/engineering studies and municipal street and bridge design. Professional services may include topographic surveying, grading plans, track design, construction permitting, structural design and detailing, hydrology and hydraulic design, roadway design, cost estimating, project management and scheduling. Types of clients include Class I Railroad private clients, industrial clients, municipal and DOT.

Miller Engineering, PC**11**

3831 S. Timbercreek Avenue
Springfield, MO 65807
(417) 866-6664 FAX: (417) 866-6667
Email: travis@millerstructures.com
Rep(s): Travis Miller

Activities: We provide structural engineering, forensic engineering and building enclosure services in Missouri and 22 other states. Types of clients include architects, contractors, and owners.

Modjeski and Masters, Inc.**4 / 220**

326 South 21st Street, Suite 301
St. Louis, MO 63103
(314) 588-8115
Email: dwpetermeier@modjeski.com
URL: www.modjeski.com
Other Offices In: 10 States

Rep(s): David Petermeier

Activities: Modjeski and Masters, Inc. is a structural engineering firm specializing in all aspects of bridge engineering. Type of clients include: Federal, State and local agencies, railroads, port authorities and any agency which has a bridge under its jurisdiction.

Oates Associates, Inc.**13 / 58**

720 Olive, Suite 700
St. Louis, MO 63101
(314) 588-8381 FAX: (314) 588-9605
Email: joe.hagerty@oatesassociates.com
URL: www.oatesassociates.com
Other Office:

820 S. Main Street, Suite 309
St. Charles, MO 63301
(636) 493-6277

Other Offices In: 1 State

Rep(s): Jeffrey R. Rensing

Activities: Oates Associates is a multi-disciplined planning and design firm offering civil and structural engineering services from concept through construction services. We are familiar with a broad range of scales and project types across several markets. Services include transportation planning, traffic engineering, bridge and building structures, site design, highway and street design, pedestrian accommodations, water resources, survey, and construction phase services.

Olsson**156 / 1,200**

1301 Burlington Street, Suite 100
North Kansas City, MO 64116
(816) 361-1177 FAX: (816) 361-1888
Email: rmersch@olsson.com
URL: www.olsson.com

Other Office:

550 Saint Louis Street
Springfield, MO 65806
(417) 890-8802 FAX: (417) 890-8805
Email: jforrester@olsson.com

Branch Office:

714 S. Main Street
Joplin, MO 65801
(417) 206-9000 FAX: (417) 206-9002
Email: ccristy@olsson.com

Branch Office:

1814 Main Street
Kansas City, MO 64108
(816) 842-8844
Email: jmarcason@olsson.com

Other Offices In: 7 States

Rep(s): Ron Mersch, Darren Hennen, Clayton Cristy

Activities: Olsson offers comprehensive design solutions for public and private infrastructure projects. We specialize in complex projects that involve many disciplines, including airport consulting, automation and technology, civil engineering, community consulting, construction observation, environmental, GIS, geotechnical investigation, intelligent transportation systems, land development, landscape architecture, mapping, mechanical/electrical/fire protection, power electrical, special inspections, specialty lighting, structural, surveying, traffic, transportation, urban planning and design, water resources, water/wastewater services.

OWN, Inc.**120 / 133**

3213 S. West Bypass
Springfield, MO 65807
(417) 866-2741 FAX: (417) 866-2778
Email: jhogan@weareown.com
URL: www.weareown.com

Branch Office:

811 E. Third Street
Joplin, MO 64801
(417) 782-7399 FAX: (417) 782-7398
Email: jhogan@weareown.com

Branch Office:

1745 S. Garrison Avenue
Carthage, MO 64836
(417) 358-9551 FAX: (417) 358-4224
Email: smatlock@weareown.com

Branch Office:

4240 Philips Farm Road, Suite 101
Columbia, MO 65201
(573) 397-5476
Email: jhuss@weareown.com

Branch Office:

P.O. Box 71
106 E. Pearl Street
Harrisonville, MO 64701
(816) 380-4821
Email: tbowers@weareown.com

Branch Office:

941 W. 141st Terrace, Suite A
Kansas City, MO 64145
(816) 777-0400
Email: zmyers@weareown.com

Branch Office:

218 5th Street
Monett, MO 65708
(417) 236-0112 FAX: (417) 236-0113
Email: aeckhart@wearepwm.com

Branch Office:

120 Superior Road
St. Robert, MO 65584
(573) 736-2165 FAX: (573) 736-2162
Email: aeckhart@weareown.com

Other Offices In: 2 States

Rep(s): Paul Engel, Jerrod Hogan, Andrew Eckhart, Troy Bowers

Activities: Civil engineering and surveying services, including planning, civil/site design, GIS services, Phase I environmental site assessments, municipal street and sewer design, wastewater treatment, storm water drainage and detention analysis and design, boundary/topographic surveys, cadastral, ALTA, drones, GPS and control surveys, drilling services (including geotechnical and environmental), construction materials testing and field construction monitoring.

Palmerton & Parrish, Inc.**46 / 48**

4168 W. Kearney Street
Springfield, MO 65803
(417) 864-6000 FAX: (417) 864-6004
Email: contact@ppimo.com; brandonp@ppimo.com
URL: www.ppimo.com

Branch Office:
10000 W. Highway 160
Walnut Shade (Branson), MO 65771
(417) 335-6011

Branch Office:
3500 East 13th Street
Joplin, MO 64801-5827
(417) 624-2005

Other Offices In: 1 State

Rep(s): Brandon R. Parrish, Erin Parrish, Shane Rader

Activities: PPI is a Civil Engineering Consulting Firm that specializes in Geotechnical Engineering, Subsurface Drilling, Construction Materials Testing, and Environmental Services. PPI's resources include: a highly qualified, full-time staff of nearly 60 employees; 8 drill rigs including numerous ATV-mounted rigs; comprehensive geotechnical and construction materials testing laboratory that are certified by the USACE and AMRL/CCRL (AASHTO); and geophysical survey capabilities including multi-channel analysis of shear waves (MASW) and seismic refraction. Specialty services offered by PPI include a variety of Non-Destructive Testing (NDT) methods, Ground Penetrating Radar (GPR), and vacuum (hydro) excavation. PPI is always looking for opportunities to further expand our core capabilities to better serve our clients. PPI is a Small Business in accordance with SBA guidelines for the NAICS Codes in which we work.

Parsons

65 / 2,171

530 Maryville Centre Drive, Suite 400
St. Louis, MO 63141
(314) 819-5010

Email: timothy.broyles@parsons.com

URL: www.parsons.com

Other Offices In: 34 States

Rep(s): T. A. Goodwin, Timothy S. Broyles, Vincent T. Gastoni,
Chris W. Watts

Activities: Bridge & Tunnel – Design/build, construction engineering, rehabilitation/reconstruction, value engineering, redesign, modernization, and retrofit for every type/size of fixed and movable bridge. Design and construction of bored and cut-and-cover tunnels. Road & Highway – Planning, design, development, construction for diverse economic, climatic, and geographic conditions of all roadway system types, including toll roads and interchanges. Types of clients include Departments of Transportation, as well as various public and private entities.

Pitzman's Surveying Group, Inc.

5

2725-R Sutton Boulevard
St. Louis, MO 63143
(314) 781-5665 FAX: (314) 781-1801

Email: billb@pitzmans.com

URL: www.pitzmans.com

Rep(s): Bill Berthold, Kevin Blest

Activities: Civil improvement surveys, topographic surveys, 3D laser (LiDAR) scans and modeling, construction staking, as-built surveys, easements, subdivision platting, land development: ordinance drafting and review, recording plat drafting and review, utility tracing and locating, and boundary surveys: ALTA/ACSM land title standards, Missouri minimum standards. Types of clients include commercial, education, government, healthcare, industrial, parks and recreation, residential, transportation/infrastructure.

Minority Business Enterprise

Poepping, Stone, Bach & Assoc., Inc.

4 / 24

801 Broadway, Suite 248
P.O. Box 190
Hannibal, MO 63401-0190
(573) 406-0541 FAX: (217) 223-4605

Email: edd@psba.com

URL: www.psba.com

Other Offices In: 2 States

Rep(s): Ed Duran

Activities: Bridge replacement & bridge repair projects including topographic surveys, hydraulics, preparation of preliminary, right-of-way and final construction documents. Bridge evaluation projects including routine, in-depth and fracture critical inspections. Design and detailing of complex and unusual industrial foundations. Seismic retrofit of steel structures. Types of clients include municipalities, counties, State Departments of Transportation, industries.

Prairie Engineers, P.C.

13 / 65

8873 Hazelwood Tech Court
Hazelwood, MO 63042
(217) 605-0403 FAX: (217) 718-4764

Email: lkramer@prairieengineers.com

URL: www.prairieengineers.com

Other Offices In: 2 States

Rep(s): Lisa Kramer

Activities: Prairie Engineers, P.C. is a full-service engineering and land surveying consulting firm. We have capabilities and experience with planning, project management, civil/site engineering, structural engineering, water resources engineering, transportation engineering, mechanical, electrical, and plumbing engineering, land surveying and geospatial, land acquisition, environmental science and natural resource management, and construction management. Types of clients include federal, state, local government, utilities, and private sector.

Premier Engineering Consultants, LLC

1

7427 Troost Avenue
Kansas City, MO 64131
(816) 444-4137 FAX: (816) 444-5201

Email: rokuagu@preengcon.com

URL: www.preengcon.com

Other Offices In: 1 State

Rep(s): Raymond Okuagu

Activities: We provide structural design services for all types of building (industrial, residential, commercial, institutional, sports, recreational) facilities. We also provide structural design services for transportation projects such as bridges, deep foundations, special culverts, retaining walls, etc. Our typical civil engineering design projects include roadways/highways, site plans, drainage storm and sanitary sewer, water and wastewater, traffic, parking studies, trails, etc. Types of clients include cities, states, counties, private individuals and cooperations, federal government.

Disadvantaged Business Enterprise

Minority Business Enterprise

SBA 8(a) Program Participant

Prost Builders, Inc.

16

3617 Route CC
Jefferson City, MO 65109
(573) 635-0211 FAX: (573) 634-2442

Email: vxp@prostbuilders.com

URL: www.prostbuilders.com

Rep(s): Vaughn X. Prost

Activities: Structural design of low-rise structures and construction engineering. Limited civil design work. Design of Solar PhotoVoltaic Electrical Systems. Types of clients include developers, governmental, commercial business and homeowners.

Quigg Engineering Inc.

10 / 94

720 Olive Street, Suite 1610
St. Louis, MO 63101
(314) 339-8431 FAX: (217) 245-5398

Email: twelz@quiggengineering.com

URL: www.quiggengineering.com

Other Offices In: 5 States

Rep(s): Todd Welz

Activities: Roadway, bridge, traffic signal, airport, railroad and site design; topographic (both traditional and LiDAR), right of way, utility and construction layout surveys; environmental assessments including biological surveys, wetland delineation, noise studies, and endangered species surveys. Construction inspection of highways, bridges, railroads, and site developments. Types of clients include state DOTs, tollways, counties, municipalities, developers, and contractors.

Disadvantaged Business Enterprise
Minority Business Enterprise

Reitz & Jens, Inc.

22

1055 Corporate Square Drive
St. Louis, MO 63132-2928
(314) 993-4132 FAX: (314) 993-4177

Email: info@reitzjens.com

URL: www.reitzjens.com

Rep(s): Paul H. Reitz, Eric J. Karch, Kyle E. Kocher, Jeffrey D. Bertel

Activities: Reitz & Jens has provided high quality geotechnical, water resources, environmental, and construction engineering and quality control services for more than 55 years. Geotechnical services include subsurface investigations, foundation design, and slope stability analysis for structures, infrastructure improvements, dams and levees, landfills, power, and transportation facilities. Water resources services include stormwater management and design, flood studies and FEMA permitting, dam and levee evaluation and inland port design. Environmental services include evaluation, restoration, design, and 404 permitting for wetlands, natural streams and river systems, and biostabilization projects. Construction services include field and laboratory QA/QC testing and inspection, structural monitoring systems, constructability analysis, and temporary shoring design for difficult sites. Clients include federal, state, county & Municipal agencies; utility companies; engineers & architects; private industry; contractors & developers.

Renaissance Infrastructure Consulting

25 / 60

5015 NW Canal Street, Suite 100
Riverside, MO 64150
(816) 800-0950

Email: ccorcoran@ric-consult.com

URL: www.ric-consult.com

Other Offices In: 1 State

Rep(s): Chip Corcoran, Vince Zink

Activities: RIC is a multi-disciplinary consulting firm providing land surveying, civil engineering, landscape architecture, and construction inspection services. Our areas of expertise include water/wastewater, stormwater management, site design and development, transportation, traffic engineering, commercial drone services, landscape architecture and land surveying. Types of clients include Private Developers, Contractors, Architects, Municipalities, School Districts, Federal, State DOTs, professional service companies.

SCI Engineering, Inc.

97 / 155

130 Point West Boulevard
St. Charles, MO 63301
(636) 949-8200 FAX: (636) 949-8269

Email: serter@sciengineering.com

URL: www.sciengineering.com

Branch Office:

1372 South Bishop Avenue
Rolla, MO 65401
(573) 426-4901 FAX: (573) 426-4853

Email: tkreutz@sciengineering.com

Other Offices In: 3 States

Rep(s): Shawna Erter, Tony Kreutz, Scott Harding, Trey Coad

Activities: SCI Engineering, Inc. (SCI) is a multi-discipline professional consulting firm offering services during all phases of projects -- from

development and design through final construction. Founded in 1978, SCI has expanded both in service offerings and locations to better meet the needs of its clients. Professional consulting services include Geotechnical, Environmental, Natural and Cultural Resources, and Construction Materials Testing. Our staff of over 150 employees includes geotechnical engineers, geologists, archaeologists, earth scientists, construction experts, and engineering technicians and is recognized by the Federal government as a small corporation.

SE3, LLC

3 / 36

8401 EM 350 Highway
Kansas City, MO 64133
(816) 272-5545 FAX: (816) 817-0747

Email: vstewart@se3.us

URL: www.se3.us

Other Offices In: 2 States

Rep(s): Vernal Stewart

Activities: Roadway design from municipal streets, to interstate highways, including roadway geometry, pavement design, earthwork, drainage, signage, pavement marking, traffic engineering, signal design, ITS, construction phasing and traffic control. Complete Water Infrastructure engineering, including culverts, stormwater detention, water mains, sanitary sewers, green solutions, bio-swales, bio-retention, bio-filtration, rain gardens. Construction Management, including inspection, SWPPP, erosion control, punch list, project closeout. Field Services, including CCTV, smoke testing, dyed water testing. Types of clients include federal, state, county and municipal government agencies, local school districts, and privately-owned businesses and developers.

Disadvantaged Business Enterprise

Shannon & Wilson, Inc.

24 / 315

2043 Westport Center Drive
St. Louis, MO 63146-3564
(314) 699-9660 FAX: (314) 699-9661

Email: tja@shanwil.com

URL: www.shannonwilson.com

Other Offices In: 10 States

Rep(s): Tom Abkemeier, James Dutt, Monica Zidaru

Activities: Geotechnical and environmental engineering, soil and rock mechanics, engineering geology, hydrogeology, geology, geophysics, earthquake engineering, and foundation engineering as applied to dams, industrial developments, mining & reclamation operations, power plants, structure foundations, harbors, airports and highways, embankments, excavations, water resource evaluation, solid and hazardous waste disposal. Laboratory and field static and dynamic tests, environmental assessment, permitting, assistance, NEPA analysis, wetlands delineation and mitigation, field geophysical surveys, and construction materials testing.

S.H. Smith & Co., Inc.

40

901 Vine Street
P.O. Box 72
Poplar Bluff, MO 63902-0072
(573) 785-9621 FAX: (573) 785-2651

Email: steveh@shsmithco.com

URL: www.shsmithco.com

Rep(s): Steve Hicks, William Robison, Robert MacDonald, William Cobb

Activities: Smith & Company is 100% Employee Owned and has been in business since 1968. Smith & Company specializes in civil engineering, surveying, environmental, geotechnical, materials testing and construction inspection for both public and private sectors. Typical projects include water facilities including supply, treatment, distribution and storage; wastewater collection and treatment facilities; streets, highways, and bridges; airports; stormwater drainage;

groundwater investigations; site remediation and clean-up; risk-based corrective action plans; and Phase 1 and Phase 2 environmental assessments. Types of clients include federal and state government, municipalities, counties, private developers, contractors, and individuals.

HUBZONE Small Business

Snyder & Associates, Engineers & Planners, LLC

22 / 295

802 Francis

St. Joseph, MO 64501

(816) 364-5222 FAX: (816) 364-6086

Email: aemacias@snyder-associates.com

URL: www.snyder-associates.com

Other Offices In: 4 States

Rep(s): Alexander E. Macias

Activities: Snyder & Associates provides civil engineering and planning services, specializing in bridge design, water / wastewater design, site planning, transportation design and construction services for communities, counties and state governments, as well as private clients.

Snyder Engineering, Inc.

38

1512 Old US Highway 40

Columbia, MO 65203

(573) 449-9177 FAX: (573) 449-7177

Email: msnyder@snydereng.com

URL: www.snydereng.com

Rep(s): Mark A. Snyder

Activities: Steel member connection design, on a limited basis. Our owner is a PE, licensed in several states. We do our own in-house detailing and fabrication. Most of our fabrication is stairs and hand rails. Types of clients include owners, general contractors, universities, hospitals, schools, real estate developers, municipalities, and large steel fabricators.

Solutions AEC, LLC

26 / 40

12970 Maurer Industrial Drive, Suite 200

St. Louis, MO 63127

(314) 966-6299

Email: m Spencer@solutions-aec.com

URL: www.solutions-aec.com

Other Offices In: 1 State

Rep(s): Matthew Spencer

Activities: Solutions AEC is a provider of integrated Design Build and Engineering services. We specialize in providing turnkey MEP systems for complex buildings and facilities. Types of clients include architects, general contractors, owner/operators. Types of clients include architects, general contractors, and owner/operators.

Certified Small Business

SSE, Inc.

8

138 West Clinton

St. Louis, MO 63122-5810

(314) 965-2233 FAX: (314) 965-8269

URL: www.ssestructural.com

Rep(s): Timothy R. Unger, Charlie Lu

Activities: Structural engineering services to architects, owners, and developers in the commercial, multifamily residential, educational, industrial and institutional fields. Services include design of buildings, parking structures, special structures, feasibility studies and forensic engineering. Parking garage and plaza deck restoration consulting services, including condition assessment, restoration implementation and maintenance.

Stantec

26 / 23,000

1859 Bowles Avenue, Suite 250

St. Louis, MO 63026

(636) 343-3880 FAX: (636) 343-3554

Email: bob.welsch@stantec.com

URL: www.stantec.com

Other Offices In: 45 States

Rep(s): Bob Welsch, Jason Schneider

Activities: Stantec provides professional consulting services in planning, engineering, architecture, interior design, landscape architecture, surveying, environmental sciences, project management, and project economics for infrastructure and facilities projects. We support public and private sector clients in a diverse range of markets, at every stage, from initial concept and financial feasibility to project completion and beyond. Our services are offered through over 22,000 employees operating out of more than 400 locations across 6 continents.

STL Engineering, LLC

6 / 9

400 Lemay Ferry Road, Suite 103

St. Louis, MO 63125

(314) 833-5610

Email: ajansen@stlengineering.net

URL: www.stlengineering.net

Other Offices In: 1 State

Rep(s): Andrew Jansen, Jeffrey Obermeyer

Activities: Mechanical and structural engineering in the heavy industrial realm. Types of clients include manufacturing facilities, contractors, fabrication shops.

Stock & Associates Consulting Engineers, Inc.

28

257 Chesterfield Business Parkway

Chesterfield, MO 63005

(636) 530-9100 FAX: (636) 530-9122

Email: dan.stock@stockassoc.com

URL: www.stockassoc.com

Rep(s): Dan Stock

Activities: Experience with numerous types of healthcare, institutional users, retail, commercial / industrial type projects. Project work has consisted of site selection and evaluation, preliminary design, final design and permitting as it relates to zoning regulations, rezoning, development, preliminary site layouts, final designs and plan preparation of storm and sanitary sewers, site grading, utilities, paving and roadways. Types of clients include general contractors, architects, government and municipal.

Strickland Engineering, L.C.

18

113 W. Main Street, Suite 1

Jackson, MO 63755

(573) 243-4080 FAX: (573) 243-2191

Email: mstrick@stricklandengineering.com

URL: www.stricklandengineering.com

Rep(s): Mark D. Strickland, Thomas H. Strickland, Brian W. Strickland

Activities: Mechanical, electrical, and civil design for new building construction and building renovations. Studies and designs for energy conservation projects. Public works projects including street, water distribution, wastewater collection and treatment, and stormwater management. Civil engineering and land surveying for land development. Industrial controls and systems integration. Clients include commercial, industrial, governmental agencies and institutional agencies.

Surveying and Mapping, LLC (SAM, LLC) 25 / 1,000

1224 Fern Ridge Parkway, Suite 105

St. Louis, MO 63141

(314) 576-9878

Email: Mark.Johnson@sam.biz

URL: www.sam.biz

Other Offices In: 21 States

Rep(s): Mark Johnson, Erin Allen, Brandon Espinosa, Andy Wesley

Activities: A full service firm providing complete geospatial data solutions. Professional Land Surveying, Construction Staking, Mobile Laser Scanning, Hi-Rail Surveying, HDS Laser Scanning, Photogrammetry and LiDAR, Hydrographic Surveying, Geographic Information Systems (GIS), Subsurface Utility Engineering (SUE), Utility Coordination and Construction Inspection.

Taliaferro & Browne, Inc.**55**

1020 E. 8th Street

Kansas City, MO 64106

(816) 283-3456 FAX: (816) 283-0810

Email: lgraham@tb-engr.com

URL: www.tb-engr.com

Branch Office:

906 Olive Street, Suite 225

St. Louis, MO 63101-1452

(314) 588-0456 FAX: (314) 588-0234

Rep(s): Leonard J. Graham, Hagos E. Andebrhan, Nicki Chestnut, Lamin Nyang

Activities: General civil and structural engineering, landscape architecture, architecture and surveying for public works and site development projects. Street design, storm and sanitary sewers, waterlines, pump stations, site development, grading, bridges, and culverts. Land surveying, platting, landscape architecture and site planning. Types of clients include Federal, State, County & Municipal Government, Private Developers, and other consulting firms.

Disadvantaged Business Enterprise

Minority Business Enterprise

Terracon Consultants, Inc.**75 / 3,881**

1160 Lilburn Park Road

St. Louis, MO 63146

(314) 692-8811 FAX: (314) 692-8810

Email: brporter@terracon.com

URL: www.terracon.com

Branch Office:

6700 Stephens Station Road, Suite 101

Columbia, MO 65202

(573) 214-2677 FAX: (573) 214-2714

Email: jeff.kenney@terracon.com

Branch Office:

1312 SW Market Street

Lee's Summit, MO 64081

(913) 998-7391 FAX: (816) 525-6704

Email: cjwilson@terracon.com

Branch Office:

508 E. 9th Street

Joplin, MO 64801

(417) 659-6083 FAX: (417) 659-8011

Email: tgalexander@terracon.com

Branch Office:

4765 W. Junction Street

Springfield, MO 64802

(417) 864-5700 FAX: (417) 864-0871

Email: tgalexander@terracon.com

Branch Office:

405 Schofer Street, Building 3

Rolla, MO 65401

(573) 612-7200 FAX: (573) 612-7201

Other Offices In: 39 States

Rep(s): Brian Porter, Cale Wilson, Ty Alexander

Activities: Geotechnical, environmental, construction materials testing and related engineering services for commercial, public, and government clients.

Tetra Tech, Inc.**25 / 16,000**

938 South Highway Drive

Fenton, MO 63026

(636) 326-6772 FAX: (636) 326-6790

Email: lance.nelson@tetrattech.com

URL: www.tetrattech.com

Branch Office:

415 Oak Street

Kansas City, MO 64106

(816) 412-1741 FAX: (816) 410-1748

Other Offices In: 47 States

Rep(s): John Brummer, Lance Nelson

Activities: Tetra Tech is a leading provider of consulting, engineering, and technical services worldwide. We are a diverse company, including individuals with expertise in science, research, engineering, construction, and information technology. Our strength is in collectively providing integrated services - delivering the best solutions to meet our clients' needs. Tetra Tech's innovative, sustainable solutions help our clients address their water, environment, energy, infrastructure, and resource management challenges. We are proud to be home to leading technical experts in every sector and to use that expertise throughout the project life cycle. Our commitment to safety is ingrained in our culture and at the forefront of every project. Global services include consulting and engineering for a broad range of infrastructure, resource management and energy needs including water and wastewater, environmental, military, ports and harbors, communications, oil and gas, energy, mining, remediation, utilities, waste management, and international development.

**Texas Design Concepts, Inc.
(dba TDC Structural Engineers)****2**

3906 Zambezi Drive

Columbia, MO 65202-6266

(573) 303-9169

Email: kris@tdconcepts.com

URL: www.tdconcepts.com

Rep(s): Kris Bezenek

Activities: Structural engineering design and evaluation of vertical structures. Around 75% of our volume is considered "specialty structural engineering" dealing with prestressed and precast concrete, cold-formed steel, and/or forensics-related work. Types of clients include material producers and manufacturers, contractors, private owners/managers, architects.

**The Haskell Company
(formerly Benham Design, LLC)****78 / 2,150**

622 Emerson Road, Suite 600

St. Louis, MO 63141

(314) 821-7017

Email: mark.grossenbacher@haskell.com

URL: www.haskell.com

Other Offices In: 16 States

Rep(s): Mark Grossenbacher, Adam West, Frank Bauer, Jeff Juris

Activities: Comprehensive professional engineering and design-build services for private industry and government. Service areas include aviation; bridge; civil works; roadway, transportation and traffic; water supply and water resources; stormwater management and flood control; wastewater; military and defense facilities; commercial and industrial facilities. Types of clients include GSA, Air National Guard, Air Force, Navy, Coast Guard, USACE, Anheuser-Busch In Bev, Nestle Purina, Dupont, Grande Cheese, Metropolitan Sewer District and MoDOT.

Thompson Civil, LLC

3 / 5

906 Olive Street, Suite 902
St. Louis, MO 63101
(314) 724-3127
Email: lorenzo.thompson@tcivil.com
URL: www.tcivil.com

Other Offices In: 1 State
Rep(s): Lorenzo Thompson

Activities: Civil Engineering firm with an emphasis in Highway Engineering, Site Design, and Construction Management. Our experience includes civil roadway geometric design, drainage design, pavement design (destructive and non-destructive), traffic control, erosion control, and related transportation engineering tasks from preliminary studies through final design documents and specifications for construction. Thompson Civil also has experience in storm water management and sanitary sewer design. Types of clients include Government (State, County & Municipal) and Private Clients.

Disadvantaged Business Enterprise
Minority Business Enterprise

Thouvenot, Wade & Moerchen, Inc.

17 / 120

3701 S. Lindbergh Boulevard, Suite 100
St. Louis, MO 63127
(314) 241-6300
Email: jlandeck@twm-inc.com
URL: www.twm-inc.com

Branch Office:
400 North 5th Street, Suite 101
St. Charles, MO 63301
(636) 724-8300

Branch Office:
3316 Lemone Industrial Boulevard, Suite 2
Columbia, MO 65201
(573) 442-6474

Other Offices In: 1 State
Rep(s): J.R. Landeck

Activities: TWM provides professional services for projects related to transportation engineering for roadways, traffic, sidewalks, trails, and railway; structural engineering for bridges, retaining walls, large structures, and buildings; water and wastewater engineering for water mains, water towers, wastewater treatment plants, lift stations, sanitary systems, and storm sewers; and site civil design for recreational, medical, educational, commercial, and residential developments. We also offer geospatial services including traditional land surveying, 3D scanning, GIS, and mapping as well as construction observation and sewer video/testing services. We serve clients in the public and private sector, ranging from municipalities to state DOTs to private developers.

TranSystems Corporation

233 / 1,269

2400 Pershing Road, Suite 400
Kansas City, MO 64108
(816) 329-8600 FAX: (816) 329-8601
Email: marketing@transystems.com
URL: www.transystems.com

Branch Office:
727 N. 1st Street, Suite 610
St. Louis, MO 63102
(314) 296-6765 FAX: (314) 241-5164

Branch Office:
1027 S. Main Street, Suite 309
Joplin, MO 64801
(800) 800-5261

Other Offices In: 20 States

Rep(s): Frank Weatherford, Paul J. Malir, Sara Clark, Bob Miller, Barb Frost

Activities: TranSystems provides a single source for integrated transportation solutions to a wide range of both public and private-sector clients. Our professionals perform feasibility studies, planning, civil, structural and industrial engineering, architectural services, environmental analysis, as well as project management, construction management and other support services. Our clients include Airport Authorities; State Departments of Transportation; Toll Road

Authorities; Municipal and County Governments; Railroad Companies; Port Authorities; Pipeline Companies; Telecommunications Providers; Trucking Companies; Retailers and Wholesale Distributors; Transit Authorities; and the Federal Government.

TREKK Design Group, LLC

137 / 161

1441 E. 104th
Kansas City, MO 64131
(816) 874-4655 FAX: (816) 874-4675
Email: krobinett@trekkllc.com
URL: www.trekkdesigngroup.com

Branch Office:
2313 C Industrial Drive
Columbia, MO 65202
(660) 346-9084 FAX: (816) 874-4665

Branch Office:
2137 W. Kingsley, Suite B
Springfield, MO 65807
(417) 890-9465

Branch Office:
17 Cassens Court
Fenton, MO 63026
(314) 932-1226

Other Offices In: 3 States

Rep(s): Kimberly Robinett, Trent Robinett

Activities: We are full service civil engineering firm. We provide traffic, transportation and water/wastewater engineering. We also provide survey, GIS services, construction inspection, combined and sanitary sewer investigations services and cleaning and televising of sanitary and storm sewer lines. Clients include state, municipal, county, consulting engineering firms, and private sector.

Disadvantaged Business Enterprise
Women Business Enterprise

Trileaf Corporation

71 / 215

1515 Des Peres Road, Suite 200
St. Louis, MO 63131
(314) 997-6111
Email: w.bates@trileaf.com
URL: www.trileaf.com

Other Offices In: 17 States

Rep(s): William Bates, T. Scott Muschany, Roger Zimmer

Activities: Trileaf's core competency is performing prototype-driven multi-site rollouts. Types of clients include quick service restaurants, convenience stores, small box retail, and grocery.

Vecino Design, LLC

36 / 65

305 West Commercial Street
Springfield, MO 65803-2667
(417) 720-1577
Email: walter@VecinoGroup.com
URL: www.VecinoGroup.com

Other Offices In: 3 States

Rep(s): Walter Warren

Activities: Architecture, engineering and interior design for affordable housing, student housing and public/private partnerships.

Veenstra & Kimm, Inc.

7 / 150

9788 N. Ash Avenue
Kansas City, MO 64157
(816) 781-6182 FAX: (816) 781-0643
Email: dmcdonald@v-k.net
URL: www.v-k.net

Other Offices In: 3 States

Rep(s): David H. McDonald, Roger E. Waltemath

Activities: Offers professional services in the field of civil, structural and environmental engineering to cities, counties, state and federal

agencies, railroads and private clients. Provides design services for streets and highways; bridge design, analysis, inspections and rehabilitation; transportation facilities; foundations design and studies; hydrology and hydraulic studies and analysis; sanitary sewers; flood insurance studies and flood control; stormwater management and planning; wastewater facility planning and treatment facilities; water planning and storage facilities; water supply and treatment facilities.

Volkert, Inc.

31 / 881

333 S. 18th Street, Suite 210
St. Louis, MO 63103
(314) 925-7326

Email: teresa.mcclure@volkert.com

URL: www.volkert.com

Other Offices In: 11 States

Rep(s): Teresa McClure, Jason Watters, David Holloway

Activities: Volkert continues to be ranked as one of the top engineering, architectural, planning, real estate acquisition and environmental consulting firms in the U.S. Volkert has completed CEI for roadway and airports projects and utility projects. Volkert also has completed environmental impact statements and roadway expansion projects. Types of clients include public and private.

Walter P Moore

41 / 680

1100 Walnut Street, Suite 1825
Kansas City, MO 64106
(816) 701-2100

Email: cgreenlief@walterpmoore.com

URL: www.walterpmoore.com

Other Offices In: 10 States

Rep(s): David Landis, Daniel Brown, Cliff Greenlief, David T. Ford

Activities: Walter P Moore is an international company of engineers, architects, innovators, and creative people who solve some of the world's most complex structural and infrastructure challenges. Providing structural, diagnostics, civil, traffic, parking, transportation, enclosure, and construction engineering services, we design solutions that are cost- and resource-efficient, forward-thinking, and help support and shape communities worldwide. Founded in 1931, our 600+ professionals work across 19 U.S. offices and five international locations.

Waters Engineering, Inc.

10

P.O. Box 567
Sikeston, MO 63801-0567
(573) 471-5680 FAX: (573) 471-5689

URL: www.waterseng.com

Rep(s): John Chittenden

Activities: Planning, design and construction phase services for water, wastewater, roadway, bridge and drainage projects. Types of clients include city and county governments and public water districts.

Wilson & Company, Inc., Engineers & Architects

90 / 681

800 E. 101st Terrace, Suite 200
Kansas City, MO 64131
(816) 701-3100 FAX: (816) 942-3013

Email: Nick.Thomas@wilsonco.com

URL: www.wilsonco.com

Other Offices In: 9 States

Rep(s): Justin Klaudt, Jim Townsend, Nicholas Thomas, William Knight, Derek Smith

Activities: Wilson & Company was founded in 1932. The firm employs of over 450 professionals throughout 14 offices in 9 states. Wilson & Company's breadth of capabilities include civil, mechanical, electrical and structural engineers; architects; planners; biologists; surveyors; mappers; GIS specialists; financial analysts; program and

construction managers; and construction inspectors. The firm provides services to a diverse client base including federal and municipal governments, public transportation agencies, railroad companies, industrial and commercial corporations, private developers, institutional, primary and secondary education, healthcare, and renewable energy companies.

Woolpert, Inc.

20 / 1,900

3636 South Geyer Road, Suite 100
St. Louis, MO 63127

(314) 436-0865 FAX: (314) 471-0664

Email: dave.dillow@woolpert.com; bret.paden@woolpert.com

URL: www.woolpert.com

Other Offices In: 14 States

Rep(s): Bret Paden, Dave Dillow

Activities: Woolpert is a multidisciplinary engineering, architectural and planning firm. The firm provides a broad range of services to governmental and private clients. Areas of expertise include architecture, planning, MEP, water resources, geographic information services, survey and site development.

WSP USA Inc.

250 / 9,024

211 N. Broadway, Suite 2800
St. Louis, MO 63102

(314) 206-4444 FAX: (314) 421-1741

Email: eeo@wsp.com

URL: www.wsp.com

Other Offices In: 44 States

Rep(s): Dan DeArmond, Will Krussel, David Hetlage, Jennifer Kuchinski

Activities: Complete engineering, architectural, and planning services. Feasibility studies, reports, designs, plans, specifications, estimating, construction management, supervision, value engineering. International consultants to governmental, industrial and commercial clients. Provide civil, structural, mechanical, electrical, chemical, sanitary and environmental engineering; architecture and interior design for commercial, industrial, educational, recreational and other facilities; comprehensive city, regional and recreational planning; landscape architecture and urban design.

Zanevan Engineering, LLC

3 / 3

1221 Oak Street
Carthage, MO 64836
(417) 800-2500

Email: jason@zanevan.com

URL: www.zanevan.com

Rep(s): John Jason Eckhart

Activities: Experience includes street and roadway improvement projects, city and county bridge replacement and rehabilitations, signalized intersections, roundabout intersections, pedestrian crossings, bicycle routes, greenway trails, pedestrian bridges, and ADA compliant sidewalk projects. We provide civil engineering services to private land development projects including site and grading plans, stormwater management, and utility coordination. We also provide structural engineering services including foundation designs, retaining walls, and forensic investigations of structural failures. Types of clients include municipal - city and county, government organizations including DOT's, and private developers.

LISTING OF ASSOCIATE MEMBERS

ACEC Business Insurance Trust 7

Greyling Insurance Brokerage, a division of EPIC

3780 Mansell Road, Suite 370

Atlanta, GA 30022

(833) 223-2248 FAX: (866) 550-4082

Email: Jeff.Connelly@greyling.com

URL: www.acecbit.org; www.greyling.com

Program Manager: Jeff Connelly

Services: Greyling Insurance Brokerage, a division of EPIC (Greyling) is the endorsed broker for the ACEC Business Insurance Trust (BIT). Greyling is a specialty insurance broker and risk consultant dedicated to serving the design and construction industries. Greyling has experienced veterans of the insurance industry, design industry and legal profession which results in taking a multi-focal view of risk to develop risk management and insurance solutions for firms of all sizes. This includes access not only to the ACEC BIT's customized Business Insurance Program that economically fits the needs of most member firms, but also access to the most sophisticated insurance markets in the world for large ACEC member firms with complex risk exposures.

ACEC Life/Health Insurance Trust 15

2600 Network Boulevard, Suite 230

Frisco, TX 75034

(469) 200-4583 FAX: (469) 212-1372

Toll Free: (844) 259-0325

Email: info@aceclifehealthtrust.com

URL: www.aceclifehealthtrust.com

Main Contact: John Krebsbach

Services: The ACEC Life/Health Trust provides healthcare benefit solutions and services to support the business objectives of ACEC member firms and the health and well-being of their employees and families.

Anders CPAs + Advisors 240

800 Market Street, Suite 500

St. Louis, MO 63101

(314) 655-5500 FAX: (314) 655-5501

Email: bkaniecki@anderscpa.com

URL: www.anderscpa.com

Main Contact: Brent Kaniecki

Services: With 240 partners and staff and revenues of \$43.5 million, Anders is one of the largest accounting and advisory firms in the Midwest. Anders has been on the Top 100 List by Accounting Today, and has been named one of America's Best Tax and Accounting Firms by Forbes. Anders is a member of LEA Global, the 2nd largest international accounting association.

CLAES/Moss Parker 9

1490 Garden of the Gods Road, Suite C

Colorado Springs, CO 80907

(719) 374-1232

Email: marne@csmid.email

URL: www.mossparker.com

Main Contact: Marne O'Brien-Hillis

Services: PFAS destruction and remediation.

Delta Companies Inc. 200

114 S. Silver Springs Road

Cape Girardeau, MO 63703-5063

(573) 334-5261 FAX: (573) 986-9511

Email: zgreen@deltacos.com

URL: www.deltacos.com

Other Offices In: 2 States

Main Contact: Zach Green

Services: Delta Companies Inc. is a site development and highway contractor specializing in asphalt paving and road construction materials. It operates throughout southeast Missouri, northeast Arkansas, and southern Illinois.

Emery Sapp & Sons, Inc. 1,600

2301 I-70 Drive NW

Columbia, MO 65202

(573) 445-8933 FAX: (573) 445-0266

Email: info@emerysapp.com

URL: www.emerysapp.com

Main Contact: Chip Jones

Services: We are a full service heavy civil contractor that are experts in grading, excavation, underground utilities, bridge construction, asphalt paving, concrete paving and pavement preservation.

Holmes Murphy & Associates 74 / 1,000

1828 Walnut Street, Suite 701

Kansas City, MO 64108

(816) 857-7800 FAX: (866) 574-6282

Email: nmaletta@holmesmurphy.com

URL: www.holmesmurphy.com

Other Offices In: 16 States

Main Contact: Nick Maletta

Services: Independent insurance broker providing professional liability, property and casualty, workers' compensation and other business liability protection to meet your needs. Our services include helping A/E's manage their risk and control their losses through education and contract review.

H R Quadri Contractors, LLC 50

72039 Highway 21

Van Buren, MO 63965

(573) 945-2225 FAX: (573) 574-6282

Email: steveb@hrquadri.com

Main Contact: Stephen Bubanovich

Services: Heavy civil/highway contractor operation in Southern Missouri and Northern Missouri.

InScope 3

16253 Swingley Ridge Road, Suite 100

Chesterfield, MO 63017

(636) 312-4480

Email: kevin@getinscope.com

URL: www.getinscope.com

Main Contact: Kevin Corwin

Services: InScope is the fastest and easiest program and project management software built the way professionals think about their project-driven businesses by instantly connecting Scopes, Resources, Budgets and Schedules.

Lockton Companies, Inc. 1,000

444 W. 47th Street, Suite 900

Kansas City, MO 64112-1906

(816) 960-9000 FAX: (816) 960-9099

Email: stillmore@lockton.com

URL: www.lockton.com

Other Offices In: 21 States

Main Contact: Scott Fillmore

Services: Lockton Companies is a leading provider of insurance, surety bond, risk management and employee benefit services to the engineering and architectural professions. Lockton's Design and Construction Practice develops practice program and project specific solutions for firms performing on projects in over sixty countries. Lockton provides experienced contract and practice management support and programs.

Missouri Asphalt Pavement Association 4

1221 Jefferson Street
Jefferson City, MO 65109
(573) 635-6071 FAX: (573) 635-6134
Email: dalewilliams@moasphalt.org
URL: www.moasphalt.org
Main Contact: Dale Williams

Services: MAPA works to ensure our members are committed to the quality of construction and work with the Missouri Highway and Transportation Department, counties, cities, towns, and developers to aid in developing and maintaining quality specifications. We accomplish this by providing technical support and hosting educational seminars regarding the asphalt industry.

N.B. West Contracting Company, Inc. 150

18637 US Route 66
Pacific, MO 63069
(314) 962-3145
Email: sjackson@nbwest.com
URL: www.nbwest.com
Main Contact: Steve Jackson

Services: West Contracting is an asphalt paving and concrete construction company. We are a general contractor and do not offer any engineering design work.

Ollis/Akers/Arney Insurance & Business Advisors 62

2274 E. Sunshine
Springfield, MO 65804
(417) 881-8333 FAX: (417) 823-7444
Email: Mindy.Pippin@ollisaa.com
URL: www.OllisAkersArney.com
Main Contact: Mindy Pippin

Services: We are a full-service business consulting firm specializing in risk management. Our agency offers solutions in property & casualty insurance, group health benefits, medicare, wellness initiatives and HR consulting. Our team of experts use a proprietary documented process to measure results and enhance communications with stakeholders.

Rinker Materials 1,000

21421 E. Truman Road
Independence, MO 64056
(816) 796-3344
Email: kark.beckemeier@rinkerpipe.com
URL: www.rinkerpipe.com
Other Offices In: 28 States
Main Contact: Kark Beckemeier

Services: Rinker Materials produces a range of infrastructure solutions, including reinforced concrete pipe and box culverts, along with vertical precast structures and specialty products. Our personnel are active in numerous national and local associations offering their knowledge and expertise in the development of product specifications, innovative design methodology, and manufacturing processes.

RubinBrown, LLP 700

7676 Forsyth Boulevard, Suite 2100
St. Louis, MO 63105
(314) 290-3300 FAX: (314) 290-3400
Email: info@rubinbrown.com
URL: www.rubinbrown.com
Other Office:

1200 Main Street, Suite 1000
Kansas City, MO 64105
(816) 472-1122

Other Offices In: 4 States

Main Contact: Mark Jansen

Services: Independent accounting and business consulting firm with offices in St. Louis, Kansas City and Denver.

Seiler Instrument Company 200

3433 Tree Court Industrial Boulevard
St. Louis, MO 63122
(314) 968-2282 FAX: (314) 218-6139
Email: solutions@seilerinst.com
URL: www.seilegeo.com
Main Contact: Tom Seiler

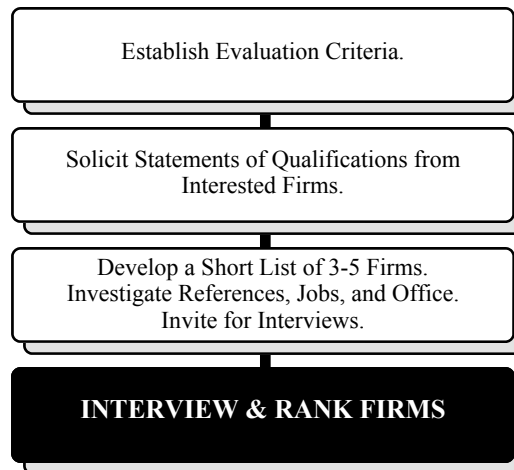
Services: Since 1945, Seiler has provided premier surveying/geospatial products and solutions to our clients. Our experienced staff are industry professionals that guide, support, and educate clients with leading hardware & software productivity solutions. Seiler carries top line products for survey, mapping, 3D scanning and mobile mapping, drones, project management software and so much more. Please email us for a demonstration or questions at geosolutions@seilerinst.com or website www.seilergeo.com/.

QBS - The 3-Step Process

Qualifications Based Selection Process — Easy as One, Two, Three

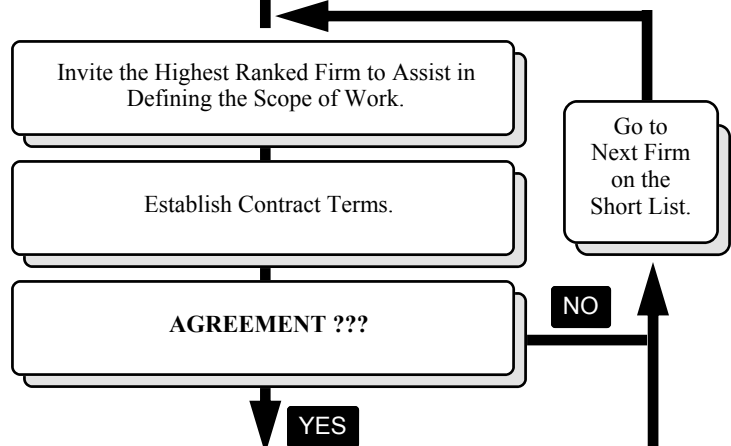
STEP 1

Select the best Qualified firm.



STEP 2

Jointly define scope and contract terms, taking advantage of the experience of the selected firm.



STEP 3

Retain the firm on the basis of an acceptable proposal.

