

The background of the top half of the cover is a large photograph of the Missouri State Capitol building in Jefferson City. The building features a prominent white dome with a statue on top, and a portico with tall columns. The sky is clear blue.

# ACEC *Missouri*

AMERICAN COUNCIL OF  
ENGINEERING COMPANIES  
*of Missouri*



# 2022-23 DIRECTORY

**Guide to the selection of ENGINEERING,  
ARCHITECTURAL and LAND SURVEYING  
services in Missouri**

## ***At Your Service***

# ***AMERICAN COUNCIL OF ENGINEERING COMPANIES OF MISSOURI***

Highly qualified and experienced design firms offering engineering, architectural and land surveying services to business, industry, and government are listed in this new Directory of the American Council of Engineering Companies of Missouri.

In every major area of the State and in every specialized field of design, our members stand ready to serve you whenever the need arises.

Should you need additional Directories or wish additional copies of this Directory sent to a colleague or associate -- or if you need any special service from ACEC/Missouri or our members -- please call or write us at any time.

For the most current information of member firms, check out our website, [www.acecmo.org](http://www.acecmo.org), to use a searchable database.

---

Contact ACEC/MO or see our website for:

- ☐ membership information and an application
- ☐ up-to-date addresses and contacts for firms listed here or joined after publication
- ☐ easy-to-follow procedure for properly procuring engineering services

Contact us by Email for:

- ☐ address corrections for those receiving this Directory by mail
- ☐ addition to our mailing list to receive future Directories



**AMERICAN COUNCIL OF ENGINEERING COMPANIES  
*of Missouri***

3432 W. Truman Boulevard, Suite 110  
Jefferson City, MO 65109  
(573) 634-4080

Website: [www.acecmo.org](http://www.acecmo.org)  
Morgan Mundell, President & CEO

# ACEC/MO'S 2022-23 DIRECTORY OF MEMBER FIRMS

Published By

**AMERICAN COUNCIL OF ENGINEERING COMPANIES OF MISSOURI**

3432 W. Truman Boulevard, Suite 110

Jefferson City, MO 65109

Phone: (573) 634-4080

Website: [www.acecmo.org](http://www.acecmo.org)



**Morgan M. Mundell**

President & CEO

Email: [MorganMundell@acecmo.org](mailto:MorganMundell@acecmo.org)



**Dawn R. (Hill) Danison**

Office Manager & Meeting Planner

Email: [DawnHill@acecmo.org](mailto:DawnHill@acecmo.org)

Mission Statement: The mission of the American Council of Engineering Companies of Missouri (ACEC/MO) is to promote the professional and business interests of its members.

Founding Member Organization of the

**AMERICAN COUNCIL OF ENGINEERING COMPANIES**

1400 L. Street, N.W., Suite 400

Washington, D.C. 20005

Phone: (202) 347-7474

FAX: (202) 898-0068

Website: [www.acec.org](http://www.acec.org)

Cost:     \$0 to Members  
             \$25 to Non-Members



# ACEC/MO Objectives Include . . .

## Business Practices



## Governmental Affairs



## Public Affairs



---

# INTRODUCTION TO CONSULTING ENGINEERING

---

The member firms of the American Council of Engineering Companies of Missouri (ACEC/MO) can be privately or publicly owned. Each must have one or more principals registered as professional engineers to practice engineering in the State of Missouri.

Those firms chartered as corporations must have certificates of authority from the Missouri Board for Architects, Professional Engineers, Land Surveyors and Landscape Architects to offer engineering, architectural, or land surveying services in Missouri.

Member firm representatives listed in this Directory serve as principals of the firm, authorized to and do

act for the firm on engineering policies. They may be professional engineers or other business professionals.

Distinguishing private practice consulting engineers from engineers in public agencies, industry and educational institutions is important. Consulting engineers provide independent judgment and service to multiple clients without obligation to special interests, organizational promotions, particular products or manufacturers. The consulting engineer serves the client directly, bringing expertise, technical ability, sound judgment and skill in his field of practice.



Owners and principals of professional design firms are member representatives at Council Meetings. These professional engineers or other business professionals help carry out the objectives of the Council: legislative/governmental affairs, business practices, public affairs, and organizational affairs.

# TABLE OF CONTENTS

2022-23 Board of Directors .....	1
American Council of Engineering Companies of Missouri	
- Background .....	2
Past Presidents / Chairs .....	2
American Council of Engineering Companies	
- Background .....	3
ACEC Fellows	
- Missouri Engineers Who Have Been Recognized .....	3
Retired Life Members .....	3
Economic Impact .....	4
Council Statistics .....	4
2022 Engineering Excellence Awards .....	5-7
2022 Distinguished Service Awards .....	7
Life Member Awards .....	7
Design Engineering Services	
- What . . . When . . . Where . . . & How .....	8
Qualifications-Based Selection Method .....	9
ACEC Professional & Ethical Conduct Guidelines .....	10
2022-23 ACEC/MO Committee Charges .....	11
2022-23 ACEC/MO Committees .....	12
2022-23 ACEC/MO Liaison Committees .....	13
Geographical Index .....	14
Design Services Index .....	15-18
Listing of Member Representatives	
- alphabetical by firm principal .....	19-21
How to Use This Directory .....	22
Listing of Member Firms	
- alphabetical with complete data .....	23-39
Listing of Associate Members	
- alphabetical with complete data .....	40-41
QBS – The 3-Step Process .....	42



# ACEC/MO 2022-23 BOARD OF DIRECTORS



**Chair**  
**Buddy D. Desai, PE**  
 Hg Consult, Inc.  
 (314) 495-6868  
[bdesai@hgcons.com](mailto:bdesai@hgcons.com)



**Chair-Elect**  
**Kevin L. Wallace, PE**  
 HNTB Corporation  
 (816) 527-2400  
[kwallace@hntb.com](mailto:kwallace@hntb.com)



**Vice Chair**  
**Robert A. Gilbert, PE**  
 Bartlett & West, Inc.  
 (573) 634-3181  
[bob.gilbert@bartwest.com](mailto:bob.gilbert@bartwest.com)



**Secretary/Treasurer**  
**Stephen D. Hicks, PE**  
 S.H. Smith & Company, Inc.  
 (573) 785-9621  
[steveh@shsmithco.com](mailto:steveh@shsmithco.com)



**Director (3rd Year)**  
**Shawwna L. Erter, PE**  
 SCI Engineering, Inc.  
 (636) 757-1055  
[serter@sciengineering.com](mailto:serter@sciengineering.com)



**Director (3rd Year)**  
**Anthony P. O'Malley, PE**  
 Lamp Rynearson  
 (816) 823-7282  
[tony.omalley@lamprynearson.com](mailto:tony.omalley@lamprynearson.com)



**Director (2nd Year)**  
**Kristen Leathers-Gratton, PE**  
 Affinis Corp.  
 (913) 239-1122  
[kleathers@affinis.us](mailto:kleathers@affinis.us)



**Director (2nd Year)**  
**Joel A. Weinhold, PE**  
 Geotechnology, Inc.  
 (314) 997-7440  
[jweinhold@geotechnology.com](mailto:jweinhold@geotechnology.com)



**Director (1st Year)**  
**Howard N. Gotschall, PE**  
 Hanson Professional Services  
 (314) 942-5285  
[hgotshall@hanson-inc.com](mailto:hgotshall@hanson-inc.com)



**Director (1st Year)**  
**Charles E. Touzinsky, PE**  
 Kimley-Horn and Associates  
 (816) 652-0350  
[chip.touzinsky@kimley-horn.com](mailto:chip.touzinsky@kimley-horn.com)



**National Director**  
**Michael S. DeBacker, PE**  
 Burns & McDonnell  
 (816) 349-6659  
[mdebacker@burnsmcd.com](mailto:mdebacker@burnsmcd.com)



**Alt. National Director**  
**Vicki S. LaRose, PE**  
 Civil Design, Inc.  
 (314) 880-4424  
[vlarose@civildesigninc.com](mailto:vlarose@civildesigninc.com)

# ACEC/MO - AT A GLANCE

**The American Council of Engineering Companies of Missouri, Inc., ACEC/MO**, is an organization of professional engineering firms in private practice. Formed July 12, 1955 and incorporated under the laws of the State of Missouri, ACEC/MO, is a founding member organization of American Council of Engineering Companies (ACEC). The objectives of the organization as expressed in its Strategic Plan are:

- **BUSINESS AFFAIRS** - *Provide opportunities for member firms to advance their business practice of consulting engineering,*
- **PUBLIC AFFAIRS** - *Promote image and effectiveness of ACEC/MO and its member firms,*
- **GOVERNMENTAL AFFAIRS** - *Maintain a strong governmental affairs program,*
- **ORGANIZATIONAL AFFAIRS** - *Provide staff and organization that meets the long-term needs of the Council and its member firms.*

**ACEC/MO promotes** professional qualifications-based selection for design services. ACEC/MO provides

educational, professional, and insurance programs for its members and their employees.

**ACEC/MO disseminates information** explaining the professional principles and services of consulting engineers. It conveys to the general public the meaning of private professional engineering practice, and aims to develop understanding and appreciation of the scope and value of services provided by consulting engineers.

**ACEC/MO publishes** a directory of its members, which is made available to potential users of engineering services. **ACEC/MO's annual Engineering Excellence Awards** honor engineering achievements demonstrating the highest degree of merit and ingenuity. Winning Missouri projects are submitted to the ACEC national competition.

**ACEC/MO has over 130 member and associate member firms**, representing over 340 member firm principals and over 11,100 employees.

## PAST PRESIDENTS

1956	Joe Williamson, Jr.	1982	John A. Boyd, Jr.	2008	Robert L. Goodwillie
1957	Hueston Smith	1983	Robert C. Flory	2009	David A. Diestelkamp
1958	Jack Harvie	1984	Samuel Wolfenbarger	2010	Phillip E. Borrowman
1959	Fusz Thatcher	1985	George M. Sallwasser	2011	Edmond D. Alizadeh
1960	Louis Hamig	1986	Robert G. Wade	2012	Daniel M. Wilson
1961	Wil Rath	1987	Edward Edgerley, Jr.	2013	Thomas R. Gredell
1962	Edward Dabler	1988	Robert G. Crabtree	2014	Linda L. Moen
1963	Clyde S. Hale	1989	William L. Durbin	2015	Gene R. Hinshaw
1964	Donald K. Ross	1990	Gordon R. Pennington	2016	Daniel R. Meckes
1965	Willard W. Given	1991	Theodore J. Cambern, Jr.	2017	Michael S. DeBacker
1966	Charles H. Zurheide	1992	Paul J. Marshall	2018	Joseph G. Hagerty
1967	Brice R. Smith, Jr.	1993	H. Jerome Butler	2019	Stephen R. Wells
1968	Charles W. Keller	1994	Leonard C. Kirberg	2020	Vicki S. LaRose
1969	Dean R. Felton	1995	Laurence T. Schaper	2021	Timothy J. Ross
1970	Clarence C. Palmer	1996	Michael A. Postiglione		
1971	Willard W. Given	1997	Edward J. Mulcahy		
1972	William G. Riddle	1998	James K. Van Buren		
1973	D. W. Ryckman	1999	Dave G. Ruf, Jr.		
1974	William A. Herrmann	2000	Edmund C. Johnson		
1975	James E. Moulder	2001	G. Kelley Gipple		
1976	John H. Robinson	2002	Robert E. Polk, Jr.		
1977	Erwin R. Breihan	2003	Kevin R. Eisenbeis		
1978	Donald M. Duncan	2004	Marc H. Alper		
1979	Richard E. Beumer	2005	David E. Hamilton		
1980	David H. Lillard	2006	Scott M. Smith		
1981	Albert Alper	2007	John R. Sonderman		



# ACEC

**The American Council of Engineering Companies, (ACEC)**, 1015 15th Street, N.W, Suite 802, Washington, D.C. 20005, Phone: 202-347-7474, is the national organization of engineers engaged in the practice of engineering. It is made up of 52 Member Organizations of which ACEC/MO is one.

**ACEC is devoted to the advancement** of the practice of engineering, to the promotion of private enterprise and to the improvement of the business environment of professional engineers engaged in engineering.

**ACEC is the source of information and cooperative services** for common purposes and benefits to all members in the various branches of engineering.

It works for maintenance of the highest ethical standards and speaks for engineers throughout the United States. ACEC disseminates information explaining the services and value of engineers to other professional organizations, business, government, and the public.

**ACEC now has over 5,000** member firms, with more than 600,000 engineers, architects, land surveyors, and other specialists.

**ACEC/MO members have actively served and continue to serve** the national organization in several capacities such as trustees of the ACEC insurance program, as national officers, and as chairman and members of ACEC committees.

## ACEC FELLOWS

**The American Council of Engineering Companies is proud to recognize the following** Missouri engineers who have been recognized by ACEC as Fellows. The Fellows program gives recognition to engineers who have made notable contributions to the profession of engineering.

Marc H. Alper  
David A. Diestelkamp

\* David H. Lillard  
Edward J. Mulcahy

\* Donald K. Ross

\* Life Fellow

## ACEC/MO RETIRED-LIFE MEMBERS

Life members who are fully retired from private practice engineering.

Phillip E. Borrowman, PE  
John R. Boyd, Jr., PE  
Steven L. Brady, PE  
Theodore J. Cambern, Jr., PE  
Richard J. Cammarata, PE  
Joel A. Cerwick, PE  
Edward R. Dabler, PE  
Jack L. Eason, PE

James L. Foil, PE  
Gene R. Hinshaw, PE  
Edmund C. Johnson, PE  
Philip A. Jozwiak, PE  
George Kern, PE  
Louis Krasner, PE  
Paul J. Marshall, PE  
E.J. Peltier, PE

Lester W. Penn, Jr., PE  
George M. Sallwasser, PE  
Laurence T. Schaper, PE  
Scott M. Smith, PE  
James K. Van Buren, PE  
Daniel M. Wilson, PE

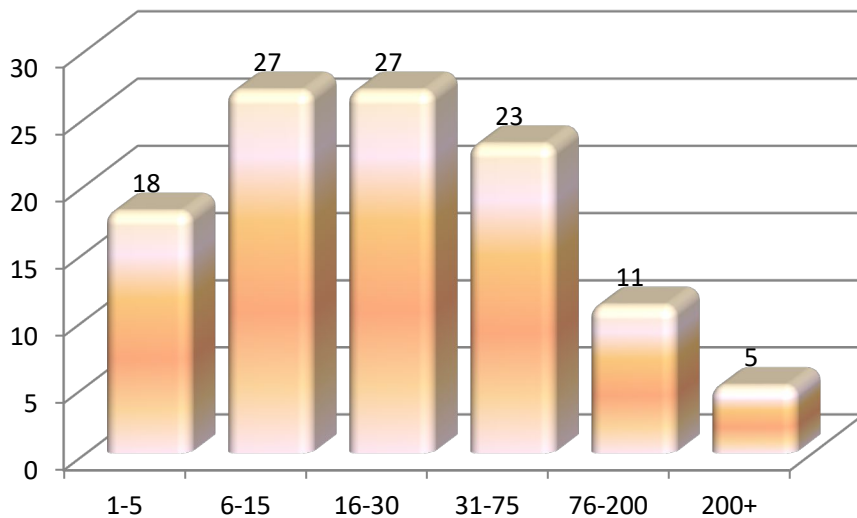
# ECONOMIC IMPACT

## National Leadership

Four of the top 100 professional design firms are ACEC/MO members who have their worldwide headquarters in Missouri. In addition, 43

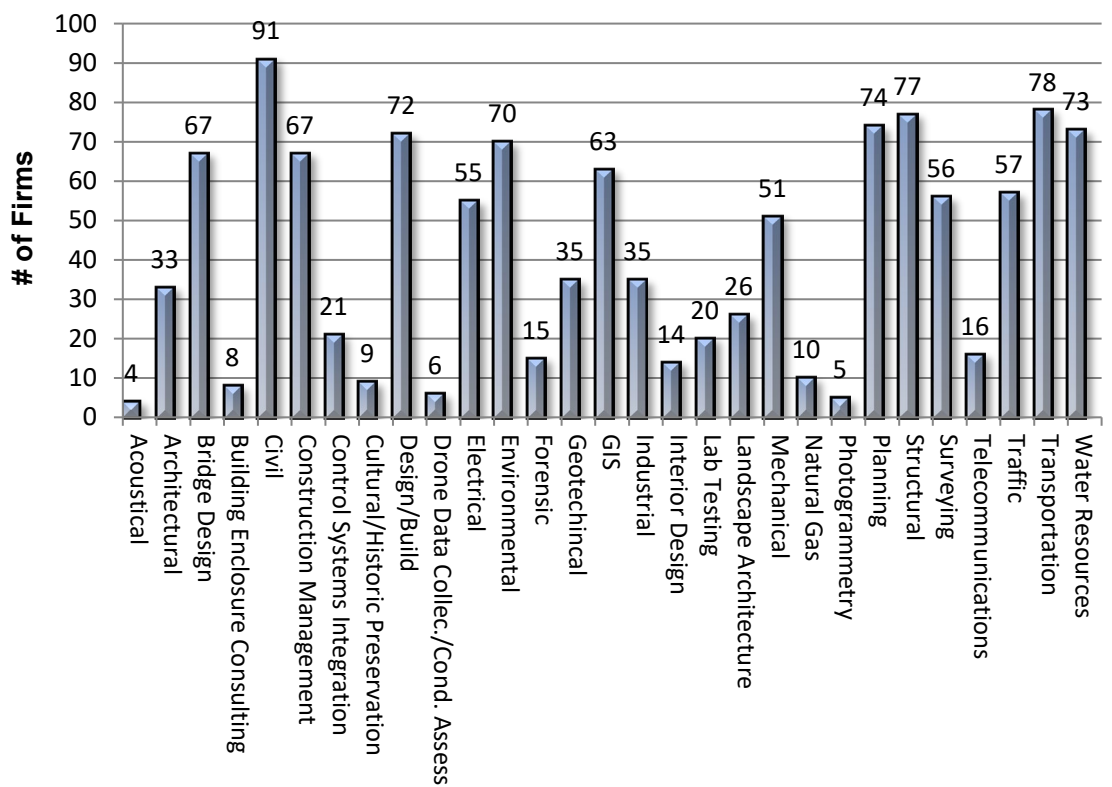
ACEC/MO firm offices are headquartered or are branches of firms ranked among the top 500 design firms in the nation according to Engineering News-Record.

# COUNCIL STATISTICS



**Profile of ACEC/MO Firms - FIRM SIZE IN MISSOURI**

**Profile of ACEC/MO Firms - SERVICES OFFERED**



# 2022 ENGINEERING EXCELLENCE AWARDS

Engineering Excellence Awards honor engineering achievements that demonstrate the highest degree of merit and ingenuity and provide a major contribution to technical, economic, or social advancement. An eminent panel of judges from outside the membership chose the 2022 winning projects from entries submitted across the state. Four of the top entries went on to compete at the American Council of Engineering Companies (ACEC) competition in Washington, D.C.



## *Grand Conceptor Award*

**CDM Smith**

Project: Co-Digestion to Renewable Gas (RNG)  
Pipeline Injection at the Des Moines, Iowa, Water  
Reclamation Facility

Client/Owner: Des Moines Metropolitan Wastewater  
Reclamation Authority

## *Grand Award*

**Bartlett & West, Inc.**

Project: Interstate 70 - Mineola Hill Climbing Lanes  
Client/Owner: Missouri Department of Transportation



## *Grand Award*

**Bartlett & West, Inc.**

Project: Using Smart Technologies to Assess KCMO's Sidewalks  
Client/Owner: City of Kansas City, MO

## *Grand Award*

**CDG Engineers, Inc.**

Project: Laclede's Landing Improvement Project  
Client/Owner: Land Clearance for Redevelopment Authority





# 2022 ENGINEERING EXCELLENCE AWARDS



## *Grand Award*

**CDM Smith, Inc.**

Project: Target Green West Marlborough Green Infrastructure  
Client/Owner: City of Kansas City, MO

## *Grand Award*

**Crawford, Murphy & Tilly, Inc.**

Project: Webster County US Highway 60 Rail Study  
Client/Owner: Webster County, MO



## *Grand Award*

**HNTB Corporation**

Project: CID Green Infrastructure Project  
Client/Owner: City of Kansas City, MO

---

## *Small Firm Award*

**Reitz & Jens, Inc.**

Project: Gravois Greenway to River des Peres Greenway  
Client/Owner: Great Rivers Greenway



## 2022 ENGINEERING EXCELLENCE AWARDS

We would also like to recognize the following firms that received a **2022 Honor Awards** for their projects:

**Burns & McDonnell**

Project: Gravois Trunk Sanitary Storage Facility  
(Pardee Lane and Pardee Road)

**CBB**

Project: Traffic Management Enhancements Phase 3

**Crawford, Murphy & Tilly, Inc.**

Project: Stratmann Pump Station Replacement

**George Butler Associates, Inc.**

Project: Trolley Trail Basin

**HDR Engineering, Inc.**

Project: I-435 / I-70 Partial Turbine Interchange

**Horner & Shifrin, Inc.**

Project: Saline Creek Wastewater Treatment  
Facility Upgrades

## 2022 DISTINGUISHED SERVICE AWARDS

This award recognizes the member firms at their 25th year of business and thereafter at 10 year intervals, with special recognition for their 50th & 100th anniversary. The Distinguished Service Award recipients for 2022 are listed below.

**Bob C. Campbell & Company, Inc.**

65 Years of Service



**Stock & Associates Consulting Engineers, Inc.**

35 Years of Service



# DESIGN ENGINEERING SERVICES

## ◆ WHAT the Design Engineering Firm Offers You

The engineering firm can offer:

- preliminary planning and feasibility studies
- engineering and architectural design
- evaluation and award of construction contracts
- general coordination of construction projects.

The types of projects which a consulting engineering firm may be called on to design include:

- |                               |                                              |
|-------------------------------|----------------------------------------------|
| * highways                    | * flood control                              |
| * bridges                     | * sewage disposal                            |
| * airports                    | * water treatment                            |
| * terminal facilities         | * refuse disposal                            |
| * water resources development | * subsurface soil testing                    |
| * water supply                | * engineering for buildings of many kinds -- |

*factories, plants, warehouses, mills, power plants, banks, hospitals, churches, schools, offices, apartments, shopping centers, sports stadiums, hotels, and many others.*

## ◆ WHEN Do You Need Design Engineering Services

An engineering firm is retained whenever a client desires specialized knowledge, unbiased and independent engineering judgment, broad experience and the application of modern engineering techniques and practice. The firm is available when an engineering staff does not exist in-house, or when the existing engineering staff is inadequate, or lacks competence in a specific area. Above all, an engineering firm provides its services on an "as needed" basis, which assures overall efficiency, economy and quality. The engineering firm may work for government, commercial or industrial clients directly or as part of a design team.

## ◆ HOW Do You Select a Design Engineering Firm

The dominant factor in the selection of an engineering firm is its qualifications to solve the problems under consideration. The qualifications are a reflection of the firm's:

- \* experience
- \* staff and facilities
- \* integrity and reputation
- \* concept of the project

- \* knowledge of local conditions.

For the State of Missouri and its political subdivisions, the selection of engineers is governed by RSMo Section 8.285 to 8.291 which is reprinted on the next page. This act also provides an excellent guideline for selection by other potential clients. These qualifications-based selection procedures are spelled out in more detail in the publication, "**QBS Manual, a Public Owner's Design Services Workbook Outlining a Step-by-Step Process for Selecting Design Professional Services**", which is available free from ACEC/MO. We also have another publication available, "**QBS - A Guide to Proper Selection Procedures.**"



## ◆ METHODS of Payment for Design Engineering Services

Five common methods of payment for engineering services are:

- \* percentage of the construction cost of the project
- \* a fixed lump sum
- \* straight time charges
- \* fixed lump sum plus expenses
- \* retainer on an annual or other basis.

Selection of an engineering firm based upon the lowest price (bid basis) is not a true measure of the worth of professional services because it does not consider education, technical knowledge, experience, and imagination and ingenuity of the consulting engineer. These factors have far more influence on the total construction and operating cost of a project -- than the initial cost of engineering.

## ◆ WHERE to Find a Qualified Design Engineering Firm

Qualified design engineering firms located in the State of Missouri can be selected from those listed in this roster, all of which are members of ACEC/MO. Our office can help you find firms qualified for your project. Call 573-634-4080. The complete list is also available on our website at [www.acecmo.org](http://www.acecmo.org). A national directory comprised of over 5,000 design firms in all 52 states is available from ACEC's website at [www.acec.org](http://www.acec.org).



# QUALIFICATIONS-BASED SELECTION METHOD

The following is Missouri Law (RSMo Section 8.285 to 8.291) regarding the procurement of professional design services and its purpose to ensure that the State and its political subdivisions receive the most competent professional services available, based on demonstrated qualifications for the type of services required. Federal law reflects the same procedure and ACEC/MO recommends this procedure to any potential user of design services.

**8.285. Policy on contracts for architectural engineering, land surveying services.** -- It shall be the policy of the state of Missouri and political subdivisions of the state of Missouri to negotiate contracts for architectural, engineering and land surveying services on the basis of demonstrated competence and qualifications for the type of services required and at fair and reasonable prices.

**8.287. Definitions.** -- As used in sections 8.285 to 8.291 unless the context specifically requires otherwise:

(1) **"Agency"** means each agency of the state and each agency of a political subdivision thereof authorized to contract for architectural, engineering and land surveying services;

(2) **"Architectural services"** means any service as defined in section 327.091, RSMo;

(3) **"Engineering services"** means any service as defined in section 327.181, RSMo;

(4) **"Firm"** means any individual, firm, partnership, corporation, association or other legal entity permitted by law to practice the profession of architecture, engineering or land surveying and provide said services;

(5) **"Land surveying services"** means any service as defined in section 327.272, RSMo;

(6) **"Project"** means any capitol improvement project or any study, plan, survey or program activity of a state agency or political subdivision thereof, including development of new or existing programs.

**8.289. Agencies using services to be furnished statement of firm's qualifications and performance data.** -- Present provisions of law notwithstanding, in the procurement of architectural, engineering or land surveying services, each agency which utilizes architectural, engineering or land surveying services shall encourage firms engaged in the lawful practice of their professions to annually submit a statement of qualifications and performance data to the agency. Whenever a project requiring architectural, engineering or land surveying services is proposed for an agency of the state or political subdivision thereof, the agency shall evaluate current statements of qualifications and performance data of firms on file together with those that may be submitted by other firms regarding the proposed project. In evaluating the

qualifications of each firm, the agency shall use the following criteria:

(1) The specialized experience and technical competence of the firm with respect to the type of services required;

(2) The capacity and capability of the firm to perform the work in question, including specialized services, within the time limitations fixed for the completion of the project;

(3) The past record of performance of the firm with respect to such factors as control of costs, quality of work, and ability to meet schedules;

(4) The firm's proximity to and familiarity with the area in which the project is located.

**8.291. Negotiation for contract -- not applicable, for certain political subdivisions.** --

1. The agency shall list three highly qualified firms. The agency shall then select the firm considered best qualified and capable of performing the desired work and negotiate a contract for the project with the firm selected.

2. For a basis for negotiations the agency shall prepare a written description of the scope of the proposed services.

3. If the agency is unable to negotiate a satisfactory contract with the firm selected, negotiations with that firm shall be terminated. The agency shall then undertake negotiations with another of the qualified firms selected. If there is a failing of accord with the second firm, negotiations with such firm shall be terminated. The agency shall then undertake negotiations with the third qualified firm.

4. If the agency is unable to negotiate a contract with any of the selected firms, the agency shall re-evaluate the necessary architectural, engineering or land surveying services, including the scope and reasonable fee requirements, again compile a list of qualified firms and proceed in accordance with the provisions of sections 8.285 to 8.291.

5. The provisions of sections 8.285 to 8.291 shall not apply to any political subdivision which adopts a **qualification-based selection** procedure **commensurate with state policy** for the procurement of architectural, engineering and land surveying services.

# ACEC PROFESSIONAL & ETHICAL CONDUCT GUIDELINES

## PREAMBLE

Consulting engineering is an important and learned profession. The members of the profession recognize that their work has a direct and vital impact on the quality of life for all people. Accordingly, the services provided by consulting engineers require honesty, impartiality, fairness and equity and must be dedicated to the protection of public health, safety and welfare. In the practice of their profession, consulting engineers must perform under a standard of professional behavior which requires adherence to the highest principles of ethical conduct on behalf of the public, clients, employees and the profession.

## I. Fundamental Canons

Consulting engineers, in the fulfillment of their professional duties, shall:

1. Hold paramount the safety, health and welfare of the public in the performance of their professional duties.
2. Perform services only in areas of their competence.
3. Issue public statements only in an objective and truthful manner.
4. Act in professional matters for each client as faithful agents or trustees.
5. Avoid improper solicitation of professional assignments.

## II. Rules of Practice

1. Consulting engineers shall hold paramount the safety, health and welfare of the public in the performance of their professional duties.
  - a. Consulting engineers shall at all times recognize that their primary obligation is to protect the safety, health, property and welfare of the public. If their professional judgment is overruled under circumstances where the safety, health, property or welfare of the public are endangered, they shall notify their client and such other authority as may be appropriate.
  - b. Consulting engineers shall approve only engineering work which, to the best of their knowledge and belief, is safe for public health, property and welfare and in conformity with accepted standards.
  - c. Consulting engineers shall not reveal facts, data or information obtained in a professional capacity without the prior consent of the client except as authorized or required by law or these Guidelines.
  - d. Consulting engineers shall not permit the use of their name or firm nor associate in business ventures with any person or firm which they have reason to believe is engaging in fraudulent or dishonest business or professional practices.
  - e. Consulting engineers having knowledge of any alleged violation of these Guidelines shall cooperate with the proper authorities in furnishing such information or assistance as may be required.
2. Consulting engineers shall perform services only in the areas of their competence.
  - a. Consulting engineers shall undertake assignments only when qualified by education or experience in the specific technical fields involved.
  - b. Consulting engineers shall not affix their signatures to any plans or documents dealing with subject matter in which they lack competence nor to any plan or document not prepared under their direction and control.
  - c. Consulting engineers may accept an assignment outside of their fields of competence to the extent that their services are restricted to those phases of the project in which they are qualified and to the extent that they are satisfied that all other phases of such project will be performed by registered or otherwise qualified associates, consultants or employees, in which case they may then sign the documents for the total project.
3. Consulting engineers shall issue public statements only in an objective and truthful manner.
  - a. Consulting engineers shall be objective and truthful in professional reports, statements or testimony. They shall include all relevant and pertinent information in such reports, statements or testimony.
  - b. Consulting engineers may express publicly a professional opinion on technical subjects only when that opinion is founded upon adequate knowledge of the facts and competence in the subject matter.

- c. Consulting engineers shall issue no statements, criticisms, or arguments on technical matters which are inspired or paid for by interested parties, unless they have prefaced their comments by explicitly identifying the interested parties on whose behalf they are speaking and by revealing the existence of any interest they may have in the matters.
4. Consulting engineers shall act in professional matters for each client as faithful agents or trustees.
  - a. Consulting engineers shall disclose all known or potential conflicts of interest to their clients by promptly informing them of any business association, interest or other circumstances which could influence or appear to influence their judgment or the quality of their services.
  - b. Consulting engineers shall not accept compensation, financial or otherwise, from more than one party for services on the same project, or for services pertaining to the same project, unless the circumstances are fully disclosed to, and agreed to, by all interested parties.
  - c. Consulting engineers in public service as members of a governmental body or department shall not participate in decisions with respect to professional services solicited or provided by them on their organizations in private engineering practices.
  - d. Consulting engineers shall not solicit or accept a professional contract from a governmental body on which a principal or officer of their organization services as a member.
5. Consulting engineers shall avoid improper solicitation of professional assignments.
  - a. Consulting engineers shall not falsify or permit misrepresentation of their, or their associates', academic or professional qualifications. They shall not misrepresent or exaggerate their degree of responsibility in or for the subject matter of prior assignments. Brochures or other presentations incident to the solicitation of assignments shall not misrepresent pertinent facts concerning employees, associates, joint ventures or past accomplishments with the intent and purpose of enhancing their qualifications and their work.
  - b. Consulting engineers shall not offer, give, solicit or receive, either directly or indirectly, any political contribution in an amount intended to influence the award of a contract by public authority, or which may be reasonably construed by the public of having the effect or intent to influence the award of the contract. They shall not offer any gift or other valuable consideration in order to secure work. They shall not pay a commission, percentage or brokerage fee in order to secure work except to a bona fide employee or bona fide established commercial or marketing agencies retained by them.

Adopted October 1980

### Special Note:

These guidelines do not prohibit design competitions, free services, or contingent arrangements.

# 2022-23 ACEC/MO COMMITTEE CHARGES

**Advisory** - This Committee is charged with recommending actions and compensation for the staff, preparing an annual list of nominees for election to the various Board positions required by the Bylaws, recommending Council actions in regards to registration and ethical issues, and identifying individuals for the distinguished service awards including Fellows, Life Members, and New Principals.

**Budget & Finance** - This Committee shall study fiscal direction and maintain fiscal integrity for the Council's long-term health in accordance with the Bylaws. The members of this committee shall annually prepare a Council budget recommendation for the coming year.

**Business Practices** - This Committee is responsible for addressing common business issues such as insurance, risk management, business management, contract documents, peer review, software, and other items that advance the business practice of member firms.

**Bylaws** - This Committee shall prepare revisions to the Bylaws when and as necessary to reflect changes in the Council.

**Diversity** - This Committee shall foster diversity within our member companies; help our member firms encourage minority and woman employment while meeting legal and risk management requirements; and assist in the development of an educational and support infrastructure to encourage minority and woman careers in STEM fields.

**Education/Registration** - This Committee shall be the liaison with the state's engineering educational institutions, as well as other organizations working to promote professional and technical education. It shall also work with public and private organizations to develop professional guidelines and equitable laws defining the role and responsibilities of professional engineers in private practice.

**Engineering Excellence** - This Committee is charged with the responsibility of establishing criteria for the annual project awards competitions, selecting the date and judges for the competition judging, attend the judging and determine the winners from judging scores. Also, they will help in the presentation of awards at the Awards Banquet. Shall see that appropriate winning entries are sent on to the national competition in a timely manner.

**Environmental** - This Committee shall report to the Council and/or Governmental Affairs Committee its appraisals of and its reactions to important governmental and private sector activities and legislation in which any combination of energy, environmental and economic subjects interact.

**Governmental Affairs** - This Committee shall develop and recommend to the Council a current and long-term legislative program. Committee members shall work to get Council priorities into the legislative process, review other pending state legislation at the state level and participate in the legislative process to promote Council priorities and defeat adverse legislation. They shall keep the Council informed on pending legislation. The Committee shall be in charge of the Council's participation in state legislative functions and shall represent the Council at meetings with other organizations concerning legislation.

**Long Range Planning** - This Committee is charged with reviewing the long-range plan on an annual basis and recommending revisions when and as necessary to reflect changes in the Council.

**Membership** - This Committee is responsible for recruiting new member firms, analyzing membership trends, developing an annual membership recruitment/retention plan, and implementing a program for new firm orientation.

**PAC** - This is a group of six Trustees appointed for 3-year terms, with responsibility for seeking annual participation from members, evaluating political candidates, and recommending support. Two Trustees are appointed each year and must be contributors to the CECMo/PAC.

**Professional Procurement** - This Committee shall develop an action plan for promoting proper qualifications-based selection of engineering services under Missouri law, identify violators of proper selection procedures, and develop strategies for response. The Committee shall develop ways to recognize those clients who support proper qualifications-based selection procedures with an Annual Award.

**Programs & Seminars** - This Committee shall, in cooperation with the President and other Committees, prepare a calendar of meetings/seminars for the year, including stand-alone and those in conjunction with a regular ACEC/MO quarterly meeting, select program topics and suggest possible speakers.

**Public Relations** - This Committee shall give guidance to all Council public relations activities and internal communications programs.

**Transportation** - This Committee shall monitor legislation, regulations and other activities and programs in the transportation fields, including highways, railroads, aviation and mass transit and recommend Council positions on appropriate issues.

**Vertical Construction** - This Committee shall develop and conduct programs to serve the needs of member firms engaged in professional design practice where other consulting engineers, architects, and other design/construction professionals are the client.



# 2022-23 ACEC/MO COMMITTEES

## Advisory

Tim Ross, Chair; Vicki LaRose, Vice-Chair; Ed Alizadeh; Marc Alper; Mike DeBacker; Dave Diestelkamp; Kevin Eisenbeis; Tom Gredell; Joe Hagerty; Dan Meckes; Linda Moen; Steve Wells

## Budget & Finance

Steve Hicks, Chair; Marc Alper; Buddy Desai; Dave Diestelkamp; Bob Gilbert; Tom Gredell; Joe Hagerty; Vicki LaRose; Dan Meckes; Linda Moen; Kevin Wallace; Steve Wells

## Business Practices

Steve Donahue, Chair; Tony O'Malley, Vice-Chair; Abe Adewale; Nicole Adewale; Marc Alper; Eric Barnes; Gino Bernardez; Neil Brady; Craig Brauer; Margaret Bruns; Bruce Dawson; Marie Dennis; Mark Doerflinger; Joe Hagerty; Ryan Hagerty; Mike Hall; Chris Harker; Lorne Jackson; Mark Jansen; Tim Jardine; Ross Kasman; Rob Krewson; Vicki LaRose; Brad Loomis; Mark McFarland; Michelle Mahoney; Marjorie Melton; Linda Moen; Clarence Munsch; Tawn Nugent; Greg O'Connor; Mike Odrowski; Erin Parrish; Michael Purol; Anne Ritter; Tim Ross; Jenn Russell; Mike Spayd; Bob Staed; Srinu Yanamanamanda

## Diversity

Colleen Connor, Chair; Scott Perkins, Vice-Chair; Abe Adewale; Gino Bernardez; Tricia Bohler; Kelley Davis; Bruce Dawson; Buddy Desai; Darrell Eilers; David Ford; Shari Frank; Tirzah Gregory; Earl Harrison; Gretchen Ivy; Vicki LaRose; Brad Loomis; Marjorie Melton; Linda Moen; Kimberly Robinett; Don Rosenbarger; Vernal Stewart; Lorenzo Thompson; Mike Wild; Srinu Yanamanamanda; Pouya Yousefzadehfard; Danette Yun

## Engineering Excellence

Rob Krewson, Co-Chair; Tawn Nugent, Co-Chair; Marc Alper; Rick Bennett; Jerry Bollinger; Nikki Conley; Kelley Davis; Buddy Desai; Garrett Hummel; Michele Keal; Mike Odrowski; Andrew Potthast; Anne Schroer; Steve Schultz; Jeff Smith; Breck Washam; Todd Welz; Danette Yun; John Zimmermann

## Environmental

Mark Bross, Co-Chair; Laura Mwirigi Rightler, Co-Chair; Nicole Adewale; Mike Alexander; Elke Boyd; Chris Burns; Ben Butterfield; Steve Coates; Colleen Connor; Todd Dablemont; James Dutt; A.J. Gironde; Laura Gray; Tom Gredell; Ed Grimmer; Mike Hall; Lindsey Henry; Steve Hicks; Josiah Holst; Rebecca Howley; Eric Karch; John Killips; Maria King; Justin Klaudt; Dave Kocour; Vicki LaRose; Jim McCleish; Darren Mitchell; Rob Morrison; Randy Norris; Tony O'Malley; Bob Orr; Amanda Payne; Gary Pendergrass; Greg Perkins; Brian Porter; Karen Rieken; Trent Robinett; Jack Schaller; Dennis Stith; Wayne Weber; Christie Willson; Megan Wiskur

## Future Leaders

Anne Schroer, Chair; Justin Davis, Vice-Chair; Kris Bezenek; Brett Brooks; Shawna Erter; Bob Gilbert; Kevin Heffern; Nathan Hladky; Todd Kempker; David Maxwell; Dan Meckes; Tawn Nugent; Tony O'Malley; Laura Mwirigi Rightler; Brad Schleeter; Kandi Spraggs; Joel Weinhold; Steve Wells; Dave Yates; Pouya Yousefzadehfard; Danette Yun

## Governmental Affairs

Steve Hicks, Co-Chair; Steve Prange, Co-Chair; Abe Adewale; Marc Alper; Becky Baltz; Rick Bennett; Elke Boyd; Ozzy Bravo; Mike Davis; Mike DeBacker; Buddy Desai; Dave Diestelkamp; Jay Ellington; Corey Fischer; Bob Gilbert; Howard Gotschall; Scott Heavin; Kevin Heffern; Steve Hileman; Pam Hobbs; Greg Horn; Gretchen Ivy; Carrera Kauszler; John Killips; Tony Kreutz; Shawn Leight; Judy Macoubrie; Tony McGaughy; Dan Meckes; Ron Mersch; Agnes Otto; Gary Pendergrass; Scott Perkins; Phil Pierson; Michael Purol; Jeff Rensing; Kimberly Robinett; Jenn Russell; Mike Spayd; Chip Touzinsky; Ryan

Vraa; Kevin Wallace; Steve Wells; Todd Welz; Mike Wild; Dale Williams; Sabin Yanez; Danette Yun

## Long Range Planning

Kevin Wallace, Chair; Bob Gilbert, Vice-Chair; Tobin Bonnell; Neil Brady; Mike DeBacker; Steve Donahue; Mike Erdtmann; Shawna Erter; Howard Gotschall; Kristen Leathers-Gratton; Chris Linneman; Linda Moen; Bob Orr; Tim Ross; Adam Rutz; Vernal Stewart; Joel Weinhold; Sabin Yanez

## Membership

Chip Touzinsky, Co-Chair; Todd Welz, Co-Chair; Ben Asnicar; Tricia Bohler; Jason Dohrmann; Joe Drimmel; Darrell Eilers; Steve Wells

## Political Action Committee Trustees (PAC)

Bob Gilbert, Treasurer; Joel Weinhold, Chair (T.E. 6/30/24); Shawna Erter (T.E. 6/30/23); Kevin Wallace (T.E. 6/30/23); Kristen Leathers-Gratton (T.E. 6/30/24); Howard Gotschall (T.E. 6/30/25); Chip Touzinsky (T.E. 6/30/25)

## Professional Procurement

Bob Orr, Chair; Linda Billingsly; Tobin Bonnell; Heidi Eilers; Leonard Graham; John Huss; Lorne Jackson; Ross Kasman; Pat Kinsella; Clarence Munsch; Mike Odrowski; Jeff Rensing; Kimberly Robinett; Bill Robison; Tim Ross; Cole Shippy; Ronnie Williams; John Zimmermann

## Programs & Seminars

Joe Hagerty; Mark Jansen; Tim Jardine; David Maxwell; Julie McNiff; Tawn Nugent; Mike Odrowski; Jack Schaller

## Transportation

Steve Prange, Co-Chair; Frank Weatherford, Co-Chair; Justin Adams; Abe Adewale; Ed Alizadeh; Ramin Ashrahzadeh; Ben Asnicar; Mike Banashek; Eric Barnes; Tim Barrett; Rick Bennett; Gino Bernardez; Blake Blakemore; Tricia Bohler; Tobin Bonnell; Ozzy Bravo; Brett Brooks; Dan Brown; Timothy Broyles; Margaret Bruns; Mike Busch; Michael Carroll; Reid Catt; Jim Cherney; Steve Coates; Scott Cogan; Nikki Conely; Greg Cook; Nick Correnti; Kelley Davis; Dan DeArmond; Mike DeBacker; Marie Dennis; Buddy Desai; Dave Diestelkamp; Mark Doerflinger; Jason Dohrmann; Steve Donahue; Toshia Drebes; Darrell Eilers; Kevin Eisenbeis; Mike Erdtmann; Bob Gilbert; Howard Gotschall; Leonard Graham; Mark Grossenbacher; Ryan Hagerty; Chris Harker; Scott Heavin; Diane Heckemeyer; Kevin Heffern; Mike Herleth; Steve Hicks; Steve Hileman; Nathan Hladky; Pam Hobbs; Jeannie Hoff; Greg Horn; Garrett Hummel; Cory Imhoff; Gretchen Ivy; Lorne Jackson; Jarrett Jasper; Matt Johnson; Carrera Kauszler; Michele Keal; Steve Kellerman; Todd Kempker; Pat Kinsella; John Klein; Aaron Kober; David Kocour; Rob Krewson; J.R. Landeck; Vicki LaRose; Nathen Leach; Kristen Leathers-Gratton; Shawn Leight; Chris Linneman; Brad Loomis; Michelle Mahoney; David Maxwell; Scott McDonald; Mike McKenna; Jeff McKerrow; Matt McQuality; Aaron McVicker; Dan Meckes; Matt Miller; Linda Moen; J.C. Murray; Tim Nugent; Bob Orr; Agnes Otto; Brandon Parrish; Brian Porter; Andrew Potthast; Michael Purol; Jeff Rensing; Kimberly Robinett; Trent Robinett; Bill Robison; Jon Robison; Barry Rolle; Don Rosenbarger; Tim Ross; Adam Rutz; Rod Sachtleben; Ty Sander; Jack Schaller; Anne Schroer; Cole Shippy; Mike Spayd; Matt Spencer; Kandi Spraggs; Gary Strack; Chris Tepen; Nick Thomas; Ryan Thomas; Chip Touzinsky; Derek Vap; Kevin Wallace; Barb Wells; Steve Wells; Todd Welz; Marc Whitmore; Don Wichern; Mike Wild; Dale Williams; Ronnie Williams; Srinu Yanamanamanda; Sabin Yanez; Danette Yun; John Zimmermann

# 2022-23 ACEC/MO LIAISON COMMITTEES

## **Board of Public Service – St. Louis**

Dave Diestelkamp (T.E. 6/30/23); Brian Porter (T.E. 6/30/23); Ramin Ashrafzadeh (T.E. 6/30/24); Greg Horn (T.E. 6/30/24)\*; Steve Schultz (T.E. 6/30/24); Jay Rakers (T.E. 6/30/25); Mike Wild (T.E. 6/30/25)

## **Corps of Engineers - Kansas City**

Jason Davis (T.E. 6/30/23); Rick Kaiser (T.E. 6/30/23); Brad Loomis (T.E. 6/30/23); Steve Iverson (T.E. 6/30/24)\*; Carrera Kauszler (T.E. 6/30/24); Tom Poer (T.E. 6/30/24); Mike Alexander (T.E. 6/30/25); Darren Forgy (T.E. 6/30/25)

## **Corps of Engineers - St. Louis**

Darren Forgy (T.E. 6/30/23); Dana Halladay (T.E. 6/30/23); Michael Harizal (T.E. 6/30/23); Craig Brauer (T.E. 6/30/24); Pam Hobbs (T.E. 6/30/24)\*; Laura Mwirigi Rightler (T.E. 6/30/24); Mark Bross (T.E. 6/30/25); Wayne Weber (T.E. 6/30/25)

## **Div. of Facilities Management Design & Construction**

Mike Davis (T.E. 6/30/23); Chad Schrand (T.E. 6/30/23); Tom Cissell (T.E. 6/30/24); John Neyens (T.E. 6/30/24)\*; Trey Coad (T.E. 6/30/25); Alicia Kamischke (T.E. 6/30/25); Dick Scott (T.E. 6/30/25)

## **Kansas City, MO**

Nathan Hladky (T.E. 6/30/23); Kristen Leathers-Gratton (T.E. 6/30/23); Agnes Otto (T.E. 6/30/23)\*; Rob Krewson (T.E. 6/30/24); Julie McNiff (T.E. 6/30/24); Tom Poer (T.E. 6/30/24); Jeff McKerrow (T.E. 6/30/25); Laura Gray (T.E. 6/30/25)

## **Metropolitan Sewer District - St. Louis**

Jeff Bertel (T.E. 6/30/23); J.R. Landeck (T.E. 6/30/23)\*; Jeremy Linley (T.E. 6/30/23)\*; Brett Brooks (T.E. 6/30/24); Melissa Carver (T.E. 6/30/24); John Killips (T.E. 6/30/24); Mike Busch (T.E. 6/30/25); Howard Gotschall (T.E. 6/30/25); David Maxwell (T.E. 6/30/25)

## **Missouri Department of Natural Resources**

Mark Bross (T.E. 6/30/23); Chris Burns (T.E. 6/30/23); Rob Morrison (T.E. 6/30/23)\*; Laura Riegel (T.E. 6/30/24); Anna Saindon (T.E. 6/30/24); Elke Boyd (T.E. 6/30/25); Steve Hicks (T.E. 6/30/25); Tony O'Malley (T.E. 6/30/25)

## **Missouri Department of Transportation (CD&NE)**

Tricia Bohler (T.E. 6/30/23); Michael Purol (T.E. 6/30/23); Ronnie Williams (T.E. 6/30/23); Jeff Rensing (T.E. 6/30/24)\*; Rod Sachtleben (T.E. 6/30/24); John Zimmermann (T.E. 6/30/24); Todd Kempker (T.E. 6/30/25); John Klein (T.E. 6/30/25); Travis Pfeiffer (T.E. 6/30/25)

## **Missouri Department of Transportation (HQ)**

Ed Alizadeh (T.E. 6/30/23); Bob Gilbert (T.E. 6/30/23)\*; Aaron Kober (T.E. 6/30/23); Vicki LaRose (T.E. 6/30/24); Kevin Wallace (T.E. 6/30/24); Srinu Yanamanamanda (T.E. 6/30/24); Buddy Desai (T.E. 6/30/25); Dave Diestelkamp (T.E. 6/30/25); Kevin Fuller (T.E. 6/30/25)

## **Missouri Department of Transportation (NW&KC)**

Julie Sarson (T.E. 6/30/23); Anne Schroer (T.E. 6/30/23)\*; Brian Kidwell (T.E. 6/30/24); Linda Rottinghaus (T.E. 6/30/24); Ozzy Bravo (T.E. 6/30/25); Matt Spencer (T.E. 6/30/25)

## **Missouri Department of Transportation (SE)**

Jason Dohrmann (T.E. 6/30/23)\*; Jason Schreckenberger (T.E. 6/30/23); Frank Weatherford (T.E. 6/30/23); Ryan Thomas (T.E. 6/30/24); Don Wichern (T.E. 6/30/24); Steve Hicks (T.E. 6/30/25); Jeff Smith (T.E. 6/30/25)

## **Missouri Department of Transportation (SL)**

Buddy Desai (T.E. 6/30/23)\*; Lisa Kramer (T.E. 6/30/23); Tom Lohman (T.E. 6/30/23); Mike Erdtmann (T.E. 6/30/24); Howard Gotschall (T.E. 6/30/24); Linda Moen (T.E. 6/30/24); J.C. Murray (T.E. 6/30/25); Scott Smith (T.E. 6/30/25); Todd Welz (T.E. 6/30/25)

## **Missouri Department of Transportation (SW)**

Mike Herleth (T.E. 6/30/23); Chip Touzinsky (T.E. 6/30/23)\*; Nick Correnti (T.E. 6/30/24); Holly Lehmkuhl (T.E. 6/30/24); Becky Baltz (T.E. 6/30/25); Scott Heavin (T.E. 6/30/25); Chris Tepen (T.E. 6/30/25)

## **MoDOT – ACECMO – AGC Design-Build Forum**

Bob Gilbert (T.E. 6/30/23); J.C. Murray (T.E. 6/30/24); Ben Asnicar (T.E. 6/30/25); Tim Broyles (T.E. 6/30/25)

## **Professional Design Alliance**

April Giesmann (T.E. 6/30/23); Joel Weinhold (T.E. 6/30/23); Marc Alper (T.E. 6/30/24); Neil Brady (T.E. 6/30/24); Megan Wiskur (T.E. 6/30/25)

## **St. Louis Construction Alliance**

Joel Weinhold (T.E. 6/30/23); Todd Welz (T.E. 6/30/23); Shawna Erter (T.E. 6/30/24); Linda Moen (T.E. 6/30/24); Jeff Barnard (T.E. 6/30/25)

## **St. Louis County**

Darrell Eilers (T.E. 6/30/23); Tyson King (T.E. 6/30/23); Travis Pfeiffer (T.E. 6/30/23)\*; Brian Eads (T.E. 6/30/24); Ryan Hagerty (T.E. 6/30/24); Steve Stirnemann (T.E. 6/30/24); Nick Correnti (T.E. 6/30/25); Don Wichern (T.E. 6/30/25)



The Professional Design Alliance Committee met at the ACEC/MO office and discussed licensing issues.

# GEOGRAPHICAL INDEX

## BRANSON

Cook, Flatt & Strobel Engineers  
MECO Engineering, Inc.  
Palmerton & Parrish, Inc.

## CAPE GIRARDEAU

Bacon Farmer Workman Engineering

## CARTHAGE

Anderson Engineering, Inc.

## COLUMBIA

Allstate Consultants LLC  
Bartlett & West, Inc.  
Engineering Surveys and Services  
Klingner & Associates, P.C.  
McClure  
Terracon Consultants, Inc.  
Texas Design Concepts, Inc.  
TREKK Design Group, LLC

## FORSYTH

HDR

## HANNIBAL

Klingner & Associates, P.C.  
MECO Engineering, Inc.  
Poepping, Stone, Bach & Assoc.

## HARRISONVILLE

Anderson Engineering, Inc.

## JACKSON

Strickland Engineering, L.C.

## JEFFERSON CITY

Barr Engineering Company  
Bartlett & West, Inc.  
Cook, Flatt & Strobel Engineers  
GREDELL Engineering Resources  
MECO Engineering, Inc.  
Midwest Environmental Consultants  
Prost Builders, Inc.  
Wood Environment & Infrastructure

## JOPLIN

Allgeier, Martin and Associates, Inc.  
Anderson Engineering, Inc.  
Olsson  
Palmerton & Parrish, Inc.  
Terracon Consultants, Inc.  
TranSystems Corporation

## KANSAS CITY AREA

AECOM  
Affinis Corp.  
Alfred Benesch & Company  
Allgeier, Martin and Associates, Inc.  
Anderson Engineering, Inc.  
Antella Consulting Engineers, Inc.  
Apex Engineers, Inc.  
Argus Consulting, Inc.  
Bartlett & West, Inc.  
Black & Veatch  
Burns & McDonnell  
Bob D. Campbell & Company, Inc.  
CDM Smith  
Cook, Flatt & Strobel Engineers  
Crawford, Murphy & Tilly, Inc.  
Garver  
GBA, Inc.  
Hanson Professional Services Inc.  
HDR  
Hg Consult, Inc.  
HNTB Corporation  
Jacobs  
Kimley-Horn and Associates, Inc.  
Lamp Rynearson, Inc.  
H.W. Lochner  
McClure  
Olsson  
Taliaferro & Browne, Inc.

Tetra Tech, Inc.  
Thompson Design Consultants, P.C.  
TranSystems Corporation  
TREKK Design Group, LLC  
Walter P Moore  
Wilson & Company, Inc., Engr. & Arch.

## KIRKSVILLE

Benton & Associates, Inc.

## LEBANON

Benton & Associates, Inc.

## LEE'S SUMMIT

Allstate Consultants LLC  
HDR  
Leigh & O'Kane, L.L.C.  
SE3, LLC  
Terracon Consultants, Inc.

## LIBERTY

Veenstra & Kimm, Inc.

## MACON

Benton & Associates, Inc.  
Howe Company, LLC  
McClure

## MARCELINE

Allstate Consultants LLC

## MARSHFIELD

Cross Discipline Engineering, LLC

## MONETT

Anderson Engineering, Inc.

## O'FALLON

GBA, Inc.  
Horner & Shifrin, Inc.

## POPLAR BLUFF

Horner & Shifrin, Inc.  
S.H. Smith & Co., Inc.

## RIVERSIDE

Renaissance Infrastructure Consulting

## ROLLA

Allgeier, Martin and Associates, Inc.  
Benton & Associates, Inc.  
CM Archer Group, P.C.  
SCI Engineering, Inc.  
Terracon Consultants, Inc.

## SIKESTON

Waters Engineering, Inc.

## SPRINGFIELD

Allgeier, Martin and Associates, Inc.  
Anderson Engineering, Inc.  
Bartlett & West, Inc.  
Cook, Flatt & Strobel Engineers  
Crawford, Murphy & Tilly, Inc.  
GeoEngineers, Inc.  
GREDELL Engineering Resources  
HDR  
Lee Engineering & Associates, L.L.C.  
Midwest Environmental Consultants  
Milestone Engineering, Inc.  
Olsson  
Palmerton & Parrish, Inc.  
Terracon Consultants, Inc.  
TREKK Design Group, LLC  
Vecino Design, LLC

## ST. CHARLES

Cole & Associates, Inc.  
DOTec Corp  
EFK Moen, LLC  
HR Green, Inc.  
Oates Associates, Inc.  
SCI Engineering, Inc.

Thouvenot, Wade & Moerchen, Inc.

## ST. JOSEPH

Snyder & Associates, Engrs. & Plan.

## ST. LOUIS AREA

ABNA Engineering, Inc.  
AECOM  
Alper Audi, Inc.  
Arch Rail Group, LLC  
Bartlett & West, Inc.  
BFA Inc.  
BHMG Engineers, Inc.  
Black & Veatch  
Brown and Caldwell  
Burns & McDonnell  
CBB  
CDG Engineers  
Civil Design, Inc.  
Cole & Associates, Inc.  
Crawford, Murphy & Tilly, Inc.  
Design Group Facility Solutions, Inc.  
Donohue & Associates, Inc.  
EDM Incorporated  
EFK Moen, LLC  
Engineered Corrosion Solutions  
Engineering Design Source, Inc.  
Farnsworth Group, Inc.  
Frontenac Engineering Group  
Garver  
GBA, Inc.  
Geotechnology, Inc.  
GHD, Inc.  
Hanson Professional Services Inc.  
HDR  
HNTB Corporation  
Horner & Shifrin, Inc.  
HR Green, Inc.  
IMEG Corp.  
Jacobs  
Juneau Associates, Inc., P.C.  
KimHEC LLC  
Lochmueller Group  
M3 Engineering Group PC  
Modjeski and Masters, Inc.  
Oates Associates, Inc.  
Parsons  
Pitzman's Surveying Group, Inc.  
Prairie Engineers, P.C.  
Quigg Engineering Inc.  
Reitz & Jens, Inc.  
Renaissance Infrastructure Consulting  
Rollie Johnson, Inc.  
Ross & Baruzzini, Inc.  
SCI Engineering, Inc.  
Shannon & Wilson, Inc.  
Solutions AEC, LLC  
SSE, Inc.  
Stantec  
Stock & Associates C.E., Inc.  
Taliaferro & Browne, Inc.  
Tepa Engineering Services  
Terracon Consultants, Inc.  
Tetra Tech, Inc.  
Thompson Civil, LLC  
Thouvenot, Wade & Moerchen, Inc.  
TranSystems Corporation  
TREKK Design Group, LLC  
Volkert, Inc.  
Wood Environment & Infrastructure  
Woolpert, Inc.  
WSP USA Inc.

## ST. ROBERT

Anderson Engineering, Inc.



# LEGEND TO ENGINEERING SERVICES

## **ACOUSTICAL**

Acoustics; Noise control; Vibration and structural dynamics -- analysis and testing; Industrial noise control/monitoring; Sound system designs

## **ARCHITECTURAL**

Architecture; Interior design; Landscape architecture; Urban design

## **CIVIL**

Highways; Streets; Bridges; Recreational facilities; Tunnels; Utility systems; Water and sewage systems; Sanitary; Solid waste disposal

## **CONSTRUCTION MANAGEMENT**

Construction supervision; Construction surveys; Construction observation; Management of design and construction phases of a project

## **ELECTRICAL**

Building wiring; Communications; Electric and Electronic systems; Elevators and escalators; Fire protection systems; Instrumentation and controls; Lighting; Power production and transmission; Signal systems

## **ENVIRONMENTAL**

Environmental impact statements/assessments; Asbestos assessment; Abatement designs; Hazardous materials remedial investigations/feasibility studies; Identifying hazardous and toxic materials; Materials testing

## **FORENSIC**

Expert testimony

## **GEOTECHNICAL**

Foundation studies; Geological investigations; Groundwater investigations; Soils investigation and testing; Soil and rock mechanics; Earth and earth-rock dams, Slope stability and shoring design; Geohydrology; Geophysics; Earthquake engineering and geotechnical instrumentation

## **INDUSTRIAL**

Management studies; Manufacturing economics; Manufacturing facilities; Operations analysis and scheduling; Production methods and processes; Materials handling

## **MECHANICAL**

Heating, ventilation and air conditioning design; Plumbing; Boiler plants; Cold storage; Heat transfer; Energy studies

## **PLANNING**

Land use and site planning; Comprehensive city, regional and recreational planning

## **STRUCTURAL**

Bridges; Buildings; Foundations; Parking garages; Structural analyses; Towers

## **SURVEYING**

Land surveys; Boundary; Topographic; Construction staking; Mapping; Photogrammetric

## **TRANSPORTATION**

Airports; Highways; Parking system; Railroads; Traffic studies; Transportation systems

# DESIGN SERVICES INDEX

The chart below is intended to provide "at-a-glance" information about the services provided by ACEC/MO member firms. (See LEGEND on preceding page.)

FIRM	ACOUSTICAL	ARCHITECTURAL	CIVIL	CONSTRUCTION MGMT.	ELECTRICAL	ENVIRONMENTAL	FORENSIC	GEOTECHNICAL	INDUSTRIAL	MECHANICAL	PLANNING	STRUCTURAL	SURVEYING	TRANSPORTATION	OTHERS
ABNA Engineering, Inc. *			●	●	●	●		●			●	●	●	●	1,3,5,7,9,10
AECOM		●	●	●	●	●		●	●	●	●	●	●	●	1,2,4,5,6,7,9,10,12,14
Affinis Corp. *			●					●			●	●	●	●	1,5,7,9,10
Alfred Benesch & Company			●	●	●	●		●	●	●	●	●	●	●	1,5,7,9,10,12,13
Allgeier, Martin and Associates, Inc.			●	●	●	●			●	●	●	●	●	●	2,5,10
Allstate Consultants, LLC *			●	●		●	●				●	●	●	●	1,3,5,7,10
Alper Audi, Inc.												●			9,10,13,14
Anderson Engineering, Inc.			●			●		●	●		●	●	●	●	1,3,5,7,8,10
Antella Consulting Engineers, Inc. *		●			●					●					
Apex Engineers, Inc.												●			
Arch Rail Group, LLC													●	●	10
Argus Consulting, Inc.			●	●	●	●				●	●			●	4,9
Bacon Farmer Workman Engrng. & Testing			●		●					●				●	10
Barr Engineering Company			●		●	●		●	●	●	●	●			5,7,10,12
Bartlett & West, Inc.		●	●	●	●	●			●	●	●	●	●	●	1,5,7,9,10,12
Benton & Associates, Inc.			●		●	●					●	●	●	●	4,5,7,9,10
BFA Inc.			●					●			●		●		1,9
BHMG Engineers, Inc.			●		●	●				●	●	●			4,6
Black & Veatch		●	●	●	●	●	●	●	●	●	●	●		●	1,2,4,5,6,7,9,10,13
Brown and Caldwell			●	●	●	●			●	●	●	●			7,9
Burns & McDonnell		●	●	●	●	●		●	●	●	●	●		●	1,2,4,5,6,7,9,10,11,12
Bob D. Campbell & Company, Inc.												●			
CBB *			●	●							●			●	1,5,9
CDG Engineers		●	●	●	●	●			●	●		●	●	●	4,5,7,8,9,10
CDM Smith		●	●	●	●	●		●		●	●	●		●	5,7,9
Civil Design, Inc. *			●	●		●					●	●	●	●	5,7,9,10,12
CM Archer Group, P.C. dba Archer-Elgin *		●	●	●	●	●						●	●	●	1,5,7,9,10
Cole & Associates, Inc.			●								●		●		5,12
Cook, Flatt & Strobel Engineers, P.A.			●	●				●			●	●	●	●	1,3,7,9,10
Crawford, Murphy & Tilly, Inc.			●	●	●	●				●	●	●	●	●	1,5,7,9,10
Cross Discipline Engineering, LLC			●		●										9
Design Group Facility Solutions, Inc.		●	●	●	●				●	●	●	●			4,7,9
Donohue & Associates, Inc.			●		●	●				●		●			4,7
EDM Incorporated		●	●	●	●		●		●	●	●	●		●	7,9,10
EFK Moen, LLC *			●	●							●	●	●	●	1,5,7,9,10
Engineered Corrosion Solutions										●					3
Engineering Design Source, Inc. (EDSI) *			●	●		●						●	●	●	1,5,7,9,10
Engineering Surveys and Services			●			●		●			●		●	●	3,7,9

**OTHER:** 1 – Traffic; 2 – Telecommunications; 3 – Lab Testing; 4 – Control System Integration; 5 – GIS; 6 – Natural Gas; 7 – Water Resources; 8 – Photogrammetry; 9 – Design/Build; 10 – Bridge Design; 11 – Interior Design; 12 – Landscape Architecture; 13 – Building Enclosure Consulting; 14 – Cultural/Historic Preservation; 15 – Drone Data Collection & Condition Assessment

\* = Firm is DBE, MBE, WBE, Certified Small Business, Hubzone Small Business. Please see their full listing on pages 23-39.

# FIRM

	ACOUSTICAL	ARCHITECTURAL	CIVIL	CONSTRUCTION MGMT.	ELECTRICAL	ENVIRONMENTAL	FORENSIC	GEOTECHNICAL	INDUSTRIAL	MECHANICAL	PLANNING	STRUCTURAL	SURVEYING	TRANSPORTATION	OTHERS
Farnsworth Group, Inc.		●	●		●	●	●		●	●	●	●	●	●	1,2,4,5,6,7,9,10,12,13,14
Frontenac Engineering Group, Inc.			●	●					●			●	●		
Garver		●	●	●	●	●				●	●	●	●	●	1,5,7,9,10,12
GBA, Inc.		●	●	●	●	●			●	●	●	●	●	●	1,2,4,5,7,9,10,11,15
GeoEngineers, Inc.			●	●		●		●			●			●	3,5,7,9
Geotechnology, Inc.						●		●							3,7
GHD, Inc.		●	●	●	●	●	●	●	●	●	●	●		●	4,5,7,9,13,15
GREDELL Engineering Resources, Inc. *			●	●		●	●	●			●			●	7,9,10
Hanson Professional Services Inc.			●	●	●	●	●	●	●	●	●	●	●	●	1,5,7,9,10,15
HDR		●	●	●	●	●		●	●	●	●	●	●	●	1,2,5,7,9,10,11,12
Hg Consult, Inc. *			●	●		●					●	●		●	1,10
HNTB Corporation		●	●	●	●	●		●		●	●	●		●	1,5,7,9,10,11,12
Horner & Shifrin, Inc.			●	●	●	●	●		●	●		●	●	●	1,2,3,4,5,6,7,8,9,10,13
Howe Company, LLC			●									●	●	●	7,10
HR Green, Inc.		●	●	●	●	●			●	●	●	●		●	1,5,7,9,10,12
IMEG Corp.	●		●		●		●		●	●	●	●	●		2,5,9,10
Jacobs		●	●	●	●	●		●	●	●	●	●		●	1,2,4,5,7,9,10,11,12,15
Juneau Associates, Inc., P.C. *			●	●							●	●	●	●	5,7,10
KimHEC LLC *						●									
Kimley-Horn and Associates, Inc.			●		●	●				●	●	●		●	1,2,5,10,11,12
Klingner & Associates, P.C.		●	●	●	●	●		●	●	●	●	●	●	●	1,3,5,7,9,10,11,12
Lamp Rynearson, Inc.		●	●	●		●					●	●	●	●	1,5,7,9,12
Lee Engineering and Associates, L.L.C.			●										●		
Leigh & O'Kane, L.L.C. *												●			10
Lochmueller Group			●			●					●	●		●	1,5,7,9,10,14
H.W. Lochner			●	●	●	●			●		●	●	●	●	1,2,5,7,9,10
M3 Engineering Group PC *			●			●								●	5,7
McClure			●	●		●		●			●	●	●	●	1,7,9,10
MECO Engineering, Inc.			●	●	●	●				●		●	●	●	5,7,9,10
Midwest Environmental Consultants Co. *			●			●					●				
Milestone Engineering, Inc.			●	●							●	●		●	
Modjeski and Masters, Inc.				●	●					●		●		●	9,10
Oates Associates, Inc.			●								●	●	●	●	1,7,9,10
Olsson			●	●	●	●		●		●	●	●	●	●	1,3,4,5,7,10
Palmerton & Parrish, Inc.						●		●							3
Parsons			●	●		●					●	●		●	1,4,5,9,10,12
Pitzman's Surveying Group, Inc. *			●								●		●		5
Poepping, Stone, Bach & Assoc., Inc.		●	●		●	●			●	●	●	●	●	●	1,5,7,9,10,11,12
Prairie Engineers, P.C.			●	●	●	●				●	●	●	●	●	1,5,7,9,10,15
Prost Builders, Inc.			●	●	●							●			9
Quigg Engineering Inc. *			●	●		●					●	●	●	●	1,5,7,9,10,12
Reitz & Jens, Inc.			●			●		●							3,7

**OTHER:** 1 – Traffic; 2 – Telecommunications; 3 – Lab Testing; 4 – Control System Integration; 5 – GIS; 6 – Natural Gas; 7 – Water Resources; 8 – Photogrammetry; 9 – Design/Build; 10 – Bridge Design; 11 – Interior Design; 12 – Landscape Architecture; 13 – Building Enclosure Consulting; 14 – Cultural/Historic Preservation; 15 – Drone Data Collection & Condition Assessment

\* = Firm is DBE, MBE, WBE, Certified Small Business, Hubzone Small Business. Please see their full listing on pages 23-39.



# FIRM

	ACOUSTICAL	ARCHITECTURAL	CIVIL	CONSTRUCTION MGMT.	ELECTRICAL	ENVIRONMENTAL	FORENSIC	GEOTECHNICAL	INDUSTRIAL	MECHANICAL	PLANNING	STRUCTURAL	SURVEYING	TRANSPORTATION	OTHERS
Renaissance Infrastructure Consulting			●										●	●	1,7,9,11,12
Ross & Baruzzini, Inc.	●	●		●	●		●		●	●	●			●	1,2,4,6,7,9,11
SCI Engineering, Inc.						●		●						●	3,5,7,14
SE3, LLC *		●	●	●							●			●	1,7,9
Shannon & Wilson, Inc.				●		●		●							3,5,7
S.H. Smith & Co., Inc. *			●	●		●		●			●	●	●	●	1,3,5,7,10
Snyder & Associates, Engineers & Planners			●	●		●					●	●		●	1,3,5,7,10
Solutions AEC, LLC *				●	●					●					9
SSE, Inc.							●					●			
Stantec	●	●	●	●	●	●	●	●	●	●	●	●	●	●	1,2,3,4,5,6,7,8,9,10,11,12
Stock & Associates Consulting Engrs., Inc.			●										●		
Strickland Engineering, L.C.		●	●		●				●	●	●		●	●	4,7,9
Taliaferro & Brown, Inc. *		●	●	●		●					●	●	●	●	5,9,10,12
Tepa Engineering Services		●	●	●	●	●			●	●	●	●	●	●	1,5,7,9,10
Terracon Consultants, Inc.						●	●	●		●					3,13,14
Tetra Tech, Inc.		●	●	●	●	●		●	●	●	●	●		●	1,4,5,7,9,10
Texas Design Concepts, Inc. (dba TDC Struc.)												●			9
Thompson Civil, LLC			●	●							●			●	1,9
Thompson Design Consultants, P.C.					●					●					
Thouvenot, Wade & Moerchen, Inc.			●	●		●					●	●	●	●	1,5,7,9,10
TranSystems Corporation		●	●	●	●	●			●	●	●	●	●	●	1,3,5,7,9,10,11,14
TREKK Design Group, LLC *			●	●		●					●		●	●	1,5,7,9,10,15
Vecino Design, LLC		●		●	●					●					11,12
Veenstra & Kimm, Inc.			●	●		●					●	●	●	●	1,7,9,10,12
Volkert, Inc.			●	●		●		●			●	●		●	1,5,7,9,10
Walter P Moore			●				●					●		●	1,7,9,10,13,14
Waters Engineering, Inc.			●										●		
Wilson & Company, Inc., Engineers & Arch.		●	●	●	●	●			●	●	●	●	●	●	1,5,7,8,9,10
Wood Environment & Infrastructure Solutions			●	●	●	●	●	●	●	●	●	●	●	●	1,2,4,5,6,7,9,10,12,14
Woolpert, Inc.		●	●		●				●	●	●	●	●	●	1,5,7,9,10
WSP USA Inc.	●	●	●	●	●	●		●	●	●	●	●		●	1,2,5,6,7,9,10,11,12

**OTHER:** 1 – Traffic; 2 – Telecommunications; 3 – Lab Testing; 4 – Control System Integration; 5 – GIS; 6 – Natural Gas; 7 – Water Resources; 8 – Photogrammetry; 9 – Design/Build; 10 – Bridge Design; 11 – Interior Design; 12 – Landscape Architecture; 13 – Building Enclosure Consulting; 14 – Cultural/Historic Preservation; 15 – Drone Data Collection & Condition Assessment

\* = Firm is DBE, MBE, WBE, Certified Small Business, Hubzone Small Business. Please see their full listing on pages 23-39.

# LISTING OF MEMBER REPRESENTATIVES

## - A -

Abkemeier, Tom – Shannon & Wilson, Inc.  
 Adewale, Abe – ABNA Engineering, Inc.  
 Adewale, Nicole – ABNA Engineering, Inc.  
 Alexander, Ty – Terracon Consultants, Inc.  
 Alizadeh, Edmond D. – Geotechnology, Inc.  
 Alper, Marc H. – Alper Audi, Inc.  
 Andebrahn, Hagos E. – Taliaferro & Browne, Inc.  
 Armouti, Raed – Crawford, Murphy & Tilly, Inc.  
 Audi, Andre – Alper Audi, Inc.

## - B -

Banashek, Michael – Horner & Shifrin, Inc.  
 Barker, Bill – Tetra Tech, Inc.  
 Bartlett, Charles A. – Alfred Benesch & Company  
 Baum, Mark – Design Group Facility Solutions, Inc.  
 Bennett, Dave – Engineering Surveys and Services  
 Bensman, James D. – MECO Engineering, Inc.  
 Bergquist, Warren – Alper Audi, Inc.  
 Bernardez, Gino – Horner & Shifrin, Inc.  
 Bertel, Jeffrey D. – Reitz & Jens, Inc.  
 Bezenek, Kris – Texas Design Concepts, Inc. (dba TDC Structural Eng.)  
 Blakemore, Frank – Garver  
 Bohler, Tricia – Civil Design, Inc.  
 Bonner, Doug – Farnsworth Group, Inc.  
 Boos, Chris – Bob D. Campbell & Company, Inc., Structural Engrs.  
 Borst, Sean – Black & Veatch  
 Bowers, Troy – Anderson Engineering, Inc.  
 Brammeier, Chris - CBB  
 Brauer, Craig – Thouvenot, Wade & Moerchen, Inc.  
 Bredehoeft, Kent F. – Argus Consulting, Inc.  
 Bridges, Jeremiah – Cross Discipline Engineering, LLC  
 Brooks, Brett – Engineering Design Source, Inc. (EDSI)  
 Bross, Mark C. – Klingner & Associates, P.C.  
 Broyles, Timothy S. – Parsons  
 Brown, Daniel – Walter P Moore  
 Brown, Michael – Wallace Saunders  
 Brummer, John – Tetra Tech, Inc.  
 Burns, Chris – CDM Smith  
 Bush, Amanda – Leigh & O'Kane, L.L.C.

## - C -

Callanan, Frank – Geotechnology, Inc.  
 Campbell, Rick – Barr Engineering Company  
 Cannon, Lee - CBB  
 Chestnut, Nicki – Taliaferro & Browne, Inc.  
 Chittenden, John – Waters Engineering, Inc.  
 Chow, Wynne – WSP USA Inc.  
 Christopher, Stan – HDR  
 Clark, Sara – TranSystems Corporation  
 Coad, Trey – SCI Engineering, Inc.  
 Cobb, William – S.H. Smith & Co., Inc.  
 Coker, Ron – Burns & McDonnell  
 Cole, Kimberly – KimHEC LLC  
 Connelly, Jeff – ACEC Business Insurance Trust, Greyling  
 Corcoran, Chip – Renaissance Infrastructure Consulting, Inc.  
 Crabtree, Richard – Bob D. Campbell & Company, Inc., Structural Engrs.  
 Crady, Bryce D. – Apex Engineers, Inc.  
 Crawford, Jeff – Ross & Baruzzini, Inc.  
 Cristy, Clayton – Olsson

## - D -

Dailey, Cody – McClure  
 Davis, Gary – Bartlett & West, Inc.  
 Davis, Mike – Benton & Associates, Inc.  
 Davis, Wayne – Bob D. Campbell & Company, Inc., Structural Engrs.  
 Dawson, Bruce – GREDELL Engineering Resources, Inc.  
 DeArmond, Dan – WSP USA Inc.

DeBacker, Michael – Burns & McDonnell  
 Desai, B. – Jacobs  
 Diestelkamp, Dave – ABNA Engineering, Inc.  
 Dillow, Dave – Woolpert, Inc.  
 Dohrmann, Jason – HR Green, Inc.  
 Donahue, Steve – Horner & Shifrin, Inc.  
 Dorrell, Adam J. – Benton & Associates, Inc.  
 Drimmel, Joe – HDR  
 Dutt, James – Shannon & Wilson, Inc.

## - E -

Eckhart, Andrew – Anderson Engineering, Inc.  
 Eckhart, Jason – Anderson Engineering, Inc.  
 Ehrett, Steve – Alper Audi, Inc.  
 Eilers, Darrell – EFK Moen, LLC  
 Eisenbraun, Troy – Wilson & Company, Inc., Engineers & Architects  
 Ellington, Jay – CDG Engineers  
 Engel, Paul – Anderson Engineering, Inc.  
 Erdtmann, Mike – GBA, Inc.  
 Erter, Shawwna – SCI Engineering, Inc.  
 Eshelman, Marc – M3 Engineering Group PC

## - F -

Falbe, Michael J. – Bob D. Campbell & Company, Inc., Structural Engrs.  
 Feuerborn, Wayne – HNTB Corporation  
 Fiessinger, Chuck – BHMG Engineers, Inc.  
 Fillmore, Scott – Lockton Companies, Inc.  
 Finke, J. – Jacobs  
 Fischer, Paul – Burns & McDonnell  
 Flageolle, Chris – H.W. Lochner  
 Ford, David T. – Walter P Moore  
 Frank, Dan – Argus Consulting, Inc.  
 Frankenberg, Mark R. – BFA Inc.  
 Frankenberg, Raymond H. – BFA Inc.  
 Frost, Barb – TranSystems Corporation  
 Fuller, Kevin – Crawford, Murphy & Tilly, Inc.

## - G -

Gastoni, Vincent T. – Parsons  
 Gipple, G. Kelley – Structural Engineering Associates, Inc.  
 Gilbert, Bob – Bartlett & West, Inc.  
 Goeke, Rachel – Palmerton & Parrish, Inc.  
 Goodwin, T.A. – Parsons  
 Gotschall, Howard – Hanson Professional Services Inc.  
 Graham, Leonard J. – Taliaferro & Browne, Inc.  
 Gray, Laura – Lamp Rynearson, Inc.  
 Gredell, Thomas R. – GREDELL Engineering Resources, Inc.  
 Green, Bently – Black & Veatch  
 Greenlief, Cliff – Walter P Moore  
 Gregory, Tirzah – HNTB Corporation

## - H -

Hagerty, Joseph G. – Oates Associates, Inc.  
 Hansel, Michelina – Farnsworth Group, Inc.  
 Harder, Kevin – Black & Veatch  
 Harding, Scott – SCI Engineering, Inc.  
 Harrison, Earl – Hg Consult, Inc.  
 Harster, Edward – Arch Rail Group, LLC  
 Hasty, Dave – Wood Environment & Infrastructure Solutions, Inc.  
 Haw, Stuart – Wood Environment & Infrastructure Solutions, Inc.  
 Haynes, Jason – Lee Engineering and Associates, L.L.C.  
 Hennen, Darren – Olsson  
 Henry, Lindsey R. – Midwest Environmental Consultants Co.  
 Henson, Jeff – Black & Veatch  
 Herndon, Wesley W. – Juneau Associates, Inc., P.C.  
 Hetlage, David – WSP USA Inc.  
 Hicks, Steve – S.H. Smith & Co., Inc.

Hilderbrand, Stephen – CDG Engineers  
 Hileman, Steven K. – H.W. Lochner  
 Hobbs, Pam – Geotechnology, Inc.  
 Holloway, Davis – Volkert, Inc.  
 Holst, Josiah – HR Green, Inc.  
 Horn, G. – Jacobs  
 Horst, Barry – Bacon Farmer Workman Engineering & Testing, Inc.  
 Howe, Shannon J. – Howe Company, LLC  
 Howell, Dan – Farnsworth Group, Inc.  
 Huck, D. – Jacobs  
 Hummert, Jim – AECOM

## **- I -**

Imhoff, Cory – HDR  
 Ivy, Gretchen – HNTB Corporation

## **- J -**

Jackson, Steve – N.B. West Contracting Company, Inc.  
 Jacobs, Matt – H.W. Lochner  
 Jansen, Mark – RubinBrown, LLP  
 Jarrett, Jim – GBA, Inc.  
 Jasper, Jarrett – Horner & Shifrin, Inc.  
 Januska, Bob – GHD, Inc.  
 Jensen, Scott – Antella Consulting Engineers, Inc.  
 John, George – Engineering Design Source, Inc. (EDSI)  
 Johnston, Mark L. – H.W. Lochner  
 Jones, LaWanda – ABNA Engineering, Inc.  
 Juneau, Charles E. – Juneau Associates, Inc., P.C.

## **- K -**

Kaniecki, Brent – Anders CPAs + Advisors  
 Karch, Eric J. – Reitz & Jens, Inc.  
 Kasmann, Ross – Engineering Surveys and Services  
 Kempker, Todd – Bartlett & West, Inc.  
 Killips, John – GHD, Inc.  
 Kirn, Lucas – Engineered Corrosion Solutions  
 Klachko, Ryan – RJN Group, Inc.  
 Klautdt, Justin – Wilson & Company, Inc., Engineers & Architects  
 Knight, William – Wilson & Company, Inc., Engineers & Architects  
 Kochelek, Jeff – Engineered Corrosion Solutions  
 Kocher, Kyle E. – Reitz & Jens, Inc.  
 Kokal, J. – Jacobs  
 Kowalik, Ray – Burns & McDonnell  
 Kramer, Lisa – Prairie Engineers, P.C.  
 Kreutz, Tony – SCI Engineering, Inc.  
 Krewson, Rob – Alfred Benesch & Company  
 Kronlage, P.J. – EFK Moen, LLC  
 Krussel, Will – WSP USA Inc.  
 Kuchinski, Jennifer – WSP USA Inc.

## **- L -**

Landeck, J.R. – Thouvenot, Wade & Moerchen, Inc.  
 Landis, David – Walter P Moore  
 LaRose, Dennis – Civil Design, Inc.  
 LaRose, Vicki – Civil Design, Inc.  
 Leathers-Gratton, Kristen – Affinis Corp.  
 Lee, Derek – Lee Engineering and Associates, L.L.C.  
 Lehmen, Josh – Engineering Surveys and Services  
 Leight, Shawn – CBB  
 LePage, Charlie – Cook, Flatt & Strobel Engineers, P.A.  
 Linneman, Chris – EFK Moen, LLC  
 Loomis, Brad – Tepa Engineering Services  
 Lu, Charlie – SSE, Inc.

## **- M -**

MacDonald, Robert – S.H. Smith & Co., Inc.  
 Macias, Alexander E. – Snyder & Associates, Engineers & Planners, LLC  
 Madalon, Len – EDM Incorporated  
 Mahoney, Michelle – Cook, Flatt & Strobel Engineers, P.A.  
 Maletta, Nick – Holmes Murphy & Associates

Malir, Paul J. – TranSystems Corporation  
 Mannino, Angelo – Cook, Flatt & Strobel Engineers, P.A.  
 Masoumy, Gholam – EDM Incorporated  
 Maxwell, Dave – HR Green, Inc.  
 McCarty, M. – Jacobs  
 McClure, Teresa – Volkert, Inc.  
 McDonald, David H. – Veenstra & Kimm, Inc.  
 McFarland, Mark E. – Hinkle Law Firm, LLC  
 McKenna, Mike – Affinis Corp.  
 McKerrow, Jeff D. – Kimley-Horn and Associates, Inc.  
 McQuality, Matt – Geotechnology, Inc.  
 McVicker, Aaron – McClure  
 Meckes, Dan – Crawford, Murphy & Tilly, Inc.  
 Medows, Jeff – CM Archer Group, P.C. dba Archer-Elgin  
 Melton, Marjorie L. – M3 Engineering Group PC  
 Mersch, Ron – Olsson  
 Middendorf, Max F. – MECO Engineering, Inc.  
 Miller, Bob – TranSystems Corporation  
 Miller, Dan – Lamp Rynearson, Inc.  
 Miller, Mark A. – GeoEngineers, Inc.  
 Miller, Steven – Frontenac Engineering Group, Inc.  
 Moen, Linda – EFK Moen, LLC  
 Morris, Ty – Barr Engineering Company  
 Morrison, Rob – Barr Engineering Company  
 Murray, J.C. – AECOM

## **- N -**

Neath, Robert J. – Donohue & Associates, Inc.  
 Nelson, Lance – Tetra Tech, Inc.  
 Neyens, John J. – Klingner & Associates, P.C.  
 Nichols, David B. – Parsons  
 Nicula, Ramona – EDM Incorporated  
 Nugent, Tim – CDG Engineers  
 Nyang, Lamin – Taliaferro & Browne, Inc.

## **- O -**

Obertino, Jennifer – AECOM  
 O'Connor, Greg – Farnsworth Group, Inc.  
 O'Kane, Adam – Leigh & O'Kane, L.L.C.  
 Olson, Rick – Engineering Design Source, Inc. (EDSI)  
 O'Malley, Tony – Lamp Rynearson, Inc.  
 Orth, Mike – Black & Veatch  
 Overturf, III, William H. – Ross & Baruzzini, Inc.  
 Oxen, Lana – ACEC Life/Health Insurance Trust

## **- P -**

Paden, Bret – Woolpert, Inc.  
 Pappa, Gina – Design Group Facility Solutions, Inc.  
 Parrish, Brad R. – Palmerton & Parrish, Inc.  
 Parrish, Brandon R. – Palmerton & Parrish, Inc.  
 Patterson, Dalton – Lee Engineering and Associates, L.L.C.  
 Petermeier, David – Modjeski and Masters, Inc.  
 Pippin, Mindy – Ollis/Akers/Arney Insurance & Business Advisors  
 Polk, Jr., Robert E. – Farnsworth Group, Inc.  
 Porter, Brian – Terracon Consultants, Inc.  
 Prange, Steve – Crawford, Murphy & Tilly, Inc.  
 Price, Chris – HNTB Corporation  
 Prost, Vaughn X. – Prost Builders, Inc.  
 Puroil, Michael – Poepping, Stone, Bach & Assoc., Inc.

## **- R -**

Rader, Shane – Palmerton & Parrish, Inc.  
 Raffaele, Greg – EDM Incorporated  
 Reitz, Paul H. – Reitz & Jens, Inc.  
 Rensing, Jeffrey R. – Oates Associates, Inc.  
 Rhoades, Steve – IMEG Corp.  
 Rieger, Paul – Black & Veatch  
 Riggs, Kevin E. – Cole & Associates, Inc.  
 Ritter, Anne – Brown Smith Wallace  
 Robinett, Kimberly – TREKK Design Group, Inc.  
 Robinett, Trent – TREKK Design Group, Inc.

Robison, Jonathan L. – GeoEngineers, Inc.  
 Robison, William – S.H. Smith & Co., Inc.  
 Rohlfling, Rick. G. – BFA Inc.  
 Rolle, Barry O. – HDR  
 Rosenbarger, Donald G. – Delta Companies Inc.  
 Ross, Ben – Engineering Surveys and Services  
 Ross, Timothy J. – GBA, Inc.  
 Rottinghaus, Linda – Affinis Corp.

**- S -**

Sander, Chris – McClure  
 Sander, Ty – Crawford, Murphy & Tilly, Inc.  
 Santos, Monica – Antella Consulting Engineers, Inc.  
 Sayre, Cary – Allstate Consultants LLC  
 Sayre, Chad – Allstate Consultants LLC  
 Schleeter, Brad – Affinis Corp.  
 Schneider, Jason – Stantec  
 Schneider, Jennifer – Wood Environment & Infrastructure Solutions, Inc.  
 Schutz, Stan – R&K Excavation, Inc.  
 Seiler, Tom – Seiler Instrument Company  
 Shane, Dan – HR Green, Inc.  
 Shea, Mike – Ross & Baruzzini, Inc.  
 Shy, Ron C. – Allstate Consultants LLC  
 Sick, B. Joseph – Klingner & Associates, P.C.  
 Smith, Allen – TranSystems Corporation  
 Smith, Andy – Lamp Rynearson, Inc.  
 Smith, Glenn – CDG Engineers  
 Smith, Jeff – HNTB Corporation  
 Smith, Scott J. – Lochmueller Group  
 Snider, John T. – Anderson Engineering, Inc.  
 Spears, Eugene – Allgeier, Martin & Associates, Inc.  
 Spencer, Matt – Solutions AEC, LLC  
 Stewart, Vernal – SE3, LLC  
 Stock, Dan – Stock & Associates Consulting Engineers, Inc.  
 Straub, Chris – Argus Consulting, Inc.  
 Strickland, Brian W. – Strickland Engineering, L.C.  
 Strickland, Mark D. – Strickland Engineering, L.C.  
 Strickland, Thomas H. – Strickland Engineering, L.C.  
 Stumne, Stephen – Wood Environment & Infrastructure Solutions, Inc.  
 Summers, Bob – Horner & Shifrin, Inc.  
 Sunderland, Kelly – Bartlett & West, Inc.

**- T -**

Tate, Bradley L. – Milestone Engineering, Inc.  
 Theerman, Jeff – Brown and Caldwell  
 Thomas, Marty E. – BHMGE Engineers, Inc.  
 Thomas, Nicholas – Wilson & Company, Inc., Engineers & Architects  
 Thompson, Lorenzo – Thompson Civil, LLC  
 Thompson, Jr., H. Wayne – Thompson Design Consultants, P.C.  
 Toder, Craig – Ross & Baruzzini, Inc.  
 Touzinsky, Charles – Kimley-Horn and Associates, Inc.  
 Townsend, Jim – Wilson & Company, Inc., Engineers & Architects

**- U -**

Unger, Timothy R. – SSE, Inc.

**- V -**

Veach, Jessi – CDM Smith  
 Vogler, Scott E. – MECO Engineering, Inc.

**- W -**

Wallace, Kevin – HNTB Corporation  
 Waltemath, Roger E. – Veenstra & Kimm, Inc.  
 Warren, Walter – Vecino Design, LLC  
 Washam, Breck – Burns & McDonnell  
 Watters, Jason – Volkert, Inc.  
 Watts, Chris W. – Parsons  
 Weatherford, Frank – TranSystems Corporation  
 Weber, Dave – Allstate Consultants LLC  
 Wells, Steve – Hg Consult, Inc.

Weinhold, Joel – Geotechnology, Inc.  
 Welsch, Bob – Stantec  
 Welz, Todd – Quigg Engineering Inc.  
 Whitmore, Marc – HNTB Corporation  
 Williams, Dale – Missouri Asphalt Pavement Association  
 Willis, Dean – Allgeier, Martin & Associates, Inc.  
 Wilson, Cale – Terracon Consultants, Inc.  
 Wittliff, David – Design Group Facility Solutions, Inc.

**- Y -**

Yanamanamanda, Srinivasa - CBB  
 Yanez, Sabin – Cook, Flatt & Strobel Engineers, P.A.  
 Yates, Dave – Brown and Caldwell  
 Yeamans, David G. – Burns & McDonnell  
 Young, Patrick – HDR

**- Z -**

Zidaru, Monica – Shannon & Wilson, Inc.  
 Zimmerman, David – Rollie Johnson, Inc.  
 Zink, Vince – Renaissance Infrastructure Consulting, Inc.



Dan Oblinger, Leadercraft, led the Leadership sessions for ACEC/MO's Future Leaders Academy.



# USING THIS DIRECTORY

## American Council of Engineering Companies of Missouri Directory 2022-23

The purpose of this directory is to foster a better understanding of the relationships between the client, the public and the professional engineer in private practice.

Firms listed in this directory are members of the American Council of Engineering Companies of Missouri. The firms maintain offices or provide engineering services in Missouri, are staffed and qualified, registered engineers and are pledged to uphold high professional and ethical standards. By their membership, they subscribe to the code of professional conduct established by law and are recognized as responsible, independent and impartial experts in their fields of practice.

This directory of Missouri consulting engineers will assist in securing qualified engineering services for any project. Information is also available on consulting engineering services in other states. For more information about American Council of Engineering Companies of Missouri member firms or members of the American Council of Engineering Companies in other states, write or call ACEC/MO.

### How to Use this Directory

<i>Firm Name</i>	<b>ABC Engineering, Inc.</b> <b>3400 Manchester Road</b> <b>St. Louis, Missouri 63111</b> <b>(314) 333-3333</b> FAX: (314) 333-3334 Email: <a href="mailto:abc@abcco.com">abc@abcco.com</a> URL: <a href="http://www.abcco.com">www.abcco.com</a> Branch Office: 211 Madison Street Jefferson City, Missouri 65101 (573) 666-6666      FAX: (573) 666-6667 Other Offices In: 1 State Rep(s): John Doe Activities: ABC Engineering is a full-service architectural and engineering firm. Offers expertise in the architectural, environmental, geotechnical, planning, surveying, and transportation. Types of clients include cities/counties, governmental, institutional, educational and private sector developers. <i>Disadvantaged Business Enterprise</i>	<i>Number of Employees Nationwide</i>
<i>Address</i>		55 / 62
<i>Phone and Fax Numbers, E-mail Address, Website</i>		<i>Number of Employees in Missouri</i>
<i>Branch Offices</i>		
<i>Other State Offices</i>		
<i>Firm Specialties</i>		
<i>Minority Firm Status</i>		
		<i>Principals: Those who own or run the firm</i>

# LISTING OF MEMBER FIRMS

## ABNA Engineering, Inc.

35 / 40

4140 Lindell Boulevard  
St. Louis, MO 63108-2914  
(314) 454-0222 FAX: (314) 454-1235  
Email: [aadewale@abnacorp.com](mailto:aadewale@abnacorp.com)  
URL: [www.abnacorp.com](http://www.abnacorp.com)

Other Offices In: 1 State

Rep(s): Abe Adewale, Nicole Adewale, Dave Diestelkamp, LaWanda Jones

Activities: ABNA provides Structural, Civil Engineering, surveying, GIS/Planning, construction management, Testing & Inspection for public works infrastructure, industrial, educational, healthcare and commercial projects. Types of clients include MoDOT, MSD, Metro, St. Louis Airport, Counties, Municipalities, School Districts, Industrial Corporations, and Park Districts.

*Disadvantaged Business Enterprise*

*Minority Business Enterprise*

*Women Business Enterprise*

## AECOM

137 / 54,000

100 N. Broadway, 20th Floor  
St. Louis, MO 63102  
(314) 429-0100 FAX: (314) 429-0462  
Email: [jc.murray@aecom.com](mailto:jc.murray@aecom.com)  
URL: [www.aecom.com](http://www.aecom.com)

Branch Office:

2380 McGee Street, Suite 200  
Kansas City, MO 64108  
(816) 561-4443 FAX: (816) 561-2863

Other Offices In: 45 States

Rep(s): Jennifer Obertino, Jim Hummert, J.C. Murray

Activities: Across all components of the project life-cycle – design; build; finance & operate – AECOM Technical Services, Inc. (AECOM) is positioned to deliver consulting services from a global platform (over 150 countries). These services include all aspects of planning, environmental science and engineering; civil, structural, geotechnical, mechanical, electrical, chemical and process engineering; as well as architecture and construction management. The primary markets served include surface and air transportation, municipal water and wastewater utilities, solid and hazardous wastes, environmental, geotechnical and information solutions – for both public, private, and federal sector clients.

## Affinis Corp.

4 / 39

8900 Indian Creek Parkway, Suite 450  
Overland Park, KS 66210  
(913) 239-1100 FAX: (913) 239-1111  
Email: [info@affinis.us](mailto:info@affinis.us)  
URL: [www.affinis.us](http://www.affinis.us)

Project Office:

310 Armour Road, Suite 206  
North Kansas City, MO 64116  
(913) 239-1100 FAX: (913) 239-1111

Other Offices In: 1 State

Rep(s): Kristen Leathers-Gratton, Brad Schleeter, Mike McKenna, Linda Rottinghaus

Activities: Affinis has built its reputation by providing excellent civil engineering, planning, and consulting services. With a focus on municipal, state and federal clients, we strive to continually improve, setting new standards in client service. We serve our clients in the following areas: infrastructure planning design, civil/site planning and design, water resources analysis and design, levee and dam assessment analysis and design, sustainable design and green solutions, and consulting services.

*Certified Small Business*

## Alfred Benesch & Company

3 / 700

One Main Plaza  
4435 Main Street, Suite 1150  
Kansas City, MO 64111  
(816) 221-4222  
Email: [rkrewson@benesch.com](mailto:rkrewson@benesch.com)  
URL: [www.benesch.com](http://www.benesch.com)

Other Offices In: 17 States

Rep(s): Charles A. Bartlett, Rob Krewson

Activities: Our transportation practice includes the planning and design of highways, roadways, bridges, aviation, and railroads from conceptual through construction. Our structural practice includes vertical and horizontal design of structures, and bridge and dam inspection services. Our environmental practice includes hazardous waste remediation, NEPA services, water and wastewater treatment and conveyance. Our civil practice includes geotechnical, surveying, stormwater conveyance, flood protection, site development, hydraulics and hydrology. Our municipal engineering services include traffic, trails and parks, lighting, asset management, and grant funding assistance. Our mechanical/electrical practice includes HVAC, power and control. Clients include governmental, industrial, institutional and private.

## Allgeier, Martin and Associates, Inc. (Civil Division)

48

7231 East 24th Street  
Joplin, MO 64804-3485  
(417) 680-7200 FAX: (417) 680-7300  
Email: [eugene.spears@amce.com](mailto:eugene.spears@amce.com)  
URL: [www.amce.com](http://www.amce.com)

Other Office:

112 West 8th Street  
Rolla, MO 65401  
(573) 341-9487 FAX: (573) 341-9486

Branch Office:

1201 N.W. Briarcliff Parkway, 2nd Floor  
Kansas City, MO 64116  
(816) 673-7540

Branch Office:

1801 W. Norton Road, Suite 309B  
Springfield, MO 65803  
(417) 351-6669

Rep(s): Eugene Spears, Dean Willis

Activities: Engineering studies, design, & construction phase services for governmental, commercial, industrial and private clients in the areas of water, wastewater, transportation, environmental issues, hydrology, hydraulic structures, stormwater management, structural design and analysis, land surveys, rate evaluations, site development, and GIS.

## Allstate Consultants LLC

39

3312 LeMone Industrial Boulevard  
Columbia, MO 65201-8246  
(573) 875-8799 FAX: (573) 875-8850  
Email: [allstate@allstateconsultants.net](mailto:allstate@allstateconsultants.net)  
URL: [www.allstateconsultants.net](http://www.allstateconsultants.net)

Branch Office:

30601 Highway 5  
P.O. Box 156  
Marceline, MO 64658  
(660) 376-2941 FAX: (660) 376-3492  
Email: [carysayre@allstateconsultants.net](mailto:carysayre@allstateconsultants.net)

Branch Office:

P.O. Box 166  
Lee's Summit, MO 64063  
(816) 895-2310

Rep(s): Ron C. Shy, Dave Weber, Cary Sayre, Chad Sayre  
Activities: Subdivision planning, streets, sanitary sewers, storm sewers, water systems, wastewater treatment, water treatment, site plans, land surveying, GPS Surveying, traffic engineering, structural engineering, forensic engineering, and geotechnical engineering, including construction and materials testing. Clients include developers, architects, municipalities, counties, federal government.  
*Certified Small Business*

### Alper Audi, Inc.

17

1804 Borman Circle Drive  
St. Louis, MO 63146-4136  
(314) 432-8600 FAX: (314) 432-8630  
Email: [marc.alper@alperaudi.com](mailto:marc.alper@alperaudi.com)  
URL: [www.alperaudi.com](http://www.alperaudi.com)

Rep(s): Marc H. Alper, Andre Audi, Steve Ehrett, Warren Bergquist  
Activities: Structural engineering consultants to architects, contractors, developers, owners, industry and government. Well versed in BIM, Integrated Project Delivery, and Design-Build, we design a wide variety of projects in reinforced concrete, structural steel, post-tensioned concrete, masonry and timber. Projects include commercial, industrial, institutional and governmental, single story, mid-rise and high-rise buildings, bridges, parking garages, tilt-up, seismic design and special structures.

### Anderson Engineering, Inc.

90

3213 S. West Bypass  
Springfield, MO 65807  
(417) 866-2741 FAX: (417) 866-2778  
Email: [jhogan@ae-inc.com](mailto:jhogan@ae-inc.com)  
URL: [www.ae-inc.com](http://www.ae-inc.com)  
Branch Office:  
811 E. Third Street  
Joplin, MO 64801  
(417) 782-7399 FAX: (417) 782-7398  
Email: [jhogan@ae-inc.com](mailto:jhogan@ae-inc.com)

Branch Office:  
1745 S. Garrison Avenue  
Carthage, MO 64836  
(417) 358-9551 FAX: (417) 358-4224  
Email: [jeckhart@ae-inc.com](mailto:jeckhart@ae-inc.com)

Branch Office:  
4240 Philips Farm Road, Suite 101  
Columbia, MO 65201  
(573) 397-5476  
Email: [jhuss@ae-inc.com](mailto:jhuss@ae-inc.com)

Branch Office:  
P.O. Box 71  
106 E. Pearl Street  
Harrisonville, MO 64701  
(816) 380-4821  
Email: [tbowers@ae-inc.com](mailto:tbowers@ae-inc.com)

Branch Office:  
941 W. 141st Terrace, Suite A  
Kansas City, MO 64145  
(816) 777-0400  
Email: [zmyers@ae-inc.com](mailto:zmyers@ae-inc.com)

Branch Office:  
218 5th Street  
Monett, MO 65708  
(417) 236-0112 FAX: (417) 236-0113 Email: [aeckhart@ae-inc.com](mailto:aeckhart@ae-inc.com)

Branch Office:  
120 Superior Road  
St. Robert, MO 65584  
(573) 736-2165 FAX: (573) 736-2162 Email: [aeckhart@ae-inc.com](mailto:aeckhart@ae-inc.com)  
Other Offices In: 2 States

Rep(s): Paul Engel, Jerrod Hogan, Jason Eckhart, Andrew Eckhart

Activities: Civil engineering and surveying services, including planning, civil/site design, GIS services, Phase I environmental site assessments, municipal street and sewer design, wastewater treatment, storm water drainage and detention analysis and design, boundary/topographic surveys, cadastral, ALTA, drones, GPS and control surveys, drilling services (including geotechnical and environmental), construction materials testing and field construction monitoring.

### Antella Consulting Engineers, Inc.

5

1600 Genessee, Suite 200  
Kansas City, MO 64102  
(816) 421-0950 FAX: (816) 249-2439  
Email: [msantos@antella-inc.com](mailto:msantos@antella-inc.com)  
URL: [www.antella.com](http://www.antella.com)

Rep(s): Monica Santos, Scott Jensen

Activities: Provide MEP design services including lighting design.

Types of clients include  
*Disadvantaged Business Enterprise*  
*Minority Business Enterprise*  
*Women Business Enterprise*

### Apex Engineers, Inc.

29 / 44

1625 Locust Street  
Kansas City, MO 64108  
(816) 421-3222  
Email: [Bryce@apex-engineers.com](mailto:Bryce@apex-engineers.com)  
URL: [www.apex-engineers.com](http://www.apex-engineers.com)  
Other Offices In: 3 States  
Rep(s): Bryce D. Crady

Activities: Apex delivers buildable, logical, and efficient structural designs for residential and commercial projects. By producing a quality set of drawings, then standing behind them during the entire construction process, we set ourselves apart from other structural firms. We pride ourselves on our responsiveness and creativity in construction administration, coming up with out of the box solutions to in-field challenges. Types of clients focus on Higher-Ed clients, Government, commercial, light industrial.

### Arch Rail Group, LLC

3

5833 Pebble Oak Drive  
St. Louis, MO 63128  
(314) 472-3847  
Email: [edharster@archrailgroup.com](mailto:edharster@archrailgroup.com)  
Rep(s): Edward Harster

Activities: Provide engineering services for the railroad industry, including bridge design, track design, maintenance work, surveying and inspection. Types of clients include Class I railroads, short-lines and industries.

### Argus Consulting, Inc.

70

6363 College Boulevard, Suite 600  
Overland Park, KS 66211  
(816) 228-7500 FAX: (816) 228-7535  
Email: [kbredehoeft@argusconsulting.com](mailto:kbredehoeft@argusconsulting.com)  
Other Offices In: 2 States

Rep(s): Kent F. Bredehoeft, Chris Straub, Dan Frank

Activities: Argus is an engineering firm specialized in the programming, planning, design and construction follow-on of aircraft fuel storage facilities, aircraft hydrant fueling systems, 400 Hz ground power, preconditioned cabin air and aircraft deicing systems. Argus provides professional engineering services for airlines, airport authorities, oil companies, airport operating companies and all branches of the military.

## Bacon Farmer Workman Engineering & Testing, Inc.

5 / 145

3065 Williams Street, Suite 305  
Cape Girardeau, MO 63703  
(573) 222-5632

Email: [bhorst@bfwengineers.com](mailto:bhorst@bfwengineers.com)

URL: [www.bfwengineers.com](http://www.bfwengineers.com)

Other Offices In: 4 States

Rep(s): Barry Horst

Activities: Transportation related design work supporting heavy/highway construction. Specific design services include roadway geometric design, ADA upgrade services, bridge design (vehicular and pedestrian), pavement rehabilitation planning and design, traffic control layout, geotechnical investigation and analysis, storm water pollution prevention plan development, traffic signal and lighting design, NEPA compliance and permitting services, and utility relocation coordination services.

Hubzone Small Business

## Barr Engineering Company

20 / 870

1001 Diamond Ridge, Suite 1100  
Jefferson City, MO 65109  
(573) 638-5000 FAX: (573) 638-5001

Email: [tmorris@barr.com](mailto:tmorris@barr.com)

URL: [www.barr.com](http://www.barr.com)

Other Offices In: 6 States

Rep(s): Ty Morris, Rick Campbell, Rob Morrison

Activities: Barr Engineering Company's staff of more than 870 provides engineering, environmental and information technology services to clients in the manufacturing, forest products, mining, power, and refining industries, as well as attorneys and municipal, state, and federal agencies. Our areas of expertise include air quality permitting, environmental management and compliance assistance, water-supply and wastewater-treatment design, water resources management, permitting and design for hazardous and solid waste facilities, contaminated-site assessment and remediation, engineering design, process and materials handling design, and information management services. Barr was incorporated as an employee-owned firm in 1966 and has offices in Jefferson City, Missouri; Minneapolis, Duluth, and Hibbing, Minnesota; Ann Arbor and Grand Rapids, Michigan; Denver, Colorado; Bismark, North Dakota; Salt Lake City, Utah; and Calgary, Alberta.

## Bartlett & West, Inc.

45 / 350

601 Monroe Street, Suite 201  
Jefferson City, MO 65101  
(573) 634-3181 FAX: (573) 634-7904

Email: [bob.gilbert@bartwest.com](mailto:bob.gilbert@bartwest.com)

URL: [www.bartwest.com](http://www.bartwest.com)

Other Office:

1700-A Gilsinn Lane

Fenton, MO 63026

Email: [don.wichern@bartwest.com](mailto:don.wichern@bartwest.com)

Other Office:

1801 W. Norton Road, Suite 309A

Springfield, MO 65803

Email: [neil.brady@bartwest.com](mailto:neil.brady@bartwest.com)

Other Office:

3610 Buttonwood Drive, Suite 200

Columbia, MO 65201

(573) 552-2922

Email: [steve.schultz@bartwest.com](mailto:steve.schultz@bartwest.com)

Other Office:

800 E. 101st Terrace, Suite 350

Kansas City, MO 64131

(816) 282-6369

Email: [kelly.sunderland@bartwest.com](mailto:kelly.sunderland@bartwest.com)

Other Offices In: 8 States

Rep(s): Bob Gilbert, Todd Kempker, Gary Davis, Kelly Sunderland

Activities: Transportation, municipal, water and wastewater engineering services that include preliminary investigations with facility planning, engineering design, specification, observation of construction, rate studies, feasibility reports. Clients include federal, state, and municipal governments, developers, water districts and sewer districts, contractors and individuals.

## Benton & Associates, Inc.

7 / 39

2414 Franklin Street  
Kirkville, MO 63501  
(660) 665-3575 FAX: (217) 245-4149

Email: [jstewart@bentonassociates.com](mailto:jstewart@bentonassociates.com)

URL: [www.bentonassociates.com](http://www.bentonassociates.com)

Branch Office:

510 N. Missouri Street, Suite C

Macon, MO 63552

(660) 395-0300 FAX: (217) 245-4149

Email: [jstewart@bentonassociates.com](mailto:jstewart@bentonassociates.com)

Branch Office:

806-C East State Rte. 72

Rolla, MO 65401-3945

(573) 364-0980 FAX: (573) 364-0661

Email: [tdablemont@bentonassociates.com](mailto:tdablemont@bentonassociates.com)

Branch Office:

219 N. Adams, Suite C

Lebanon, MO 65536

(417) 991-2656 FAX: (217) 245-4149

Email: [jstewart@bentonassociates.com](mailto:jstewart@bentonassociates.com)

Other Offices In: 1 State

Rep(s): Josh Stewart

Activities: City/Land Planning, Construction Services, Dams, Design/Build, Drainage/Erosion/Flood Control, Electrical Engineering, Environmental Studies, Foundation Structures, Harbors/Waterfront Structures, Industrial Engineering, Industrial Waste Treatment, Instrumentation/Process Control, Land Reclamation, Land Surveying, Materials Testing, Municipal Engineering, Parks/Recreational Facilities, Pipelines, Site Work/Buildings and Plants, Structural Engineering, Subdivision Planning, Transportation, Utilities, Wastewater Treatment, Water Treatment/Distribution/Storage.

## BFA Inc.

30

103 Elm Street  
Washington, MO 63090  
(636) 239-4751

Email: [rfrankenberg@bfaeng.com](mailto:rfrankenberg@bfaeng.com)

URL: [www.bfaeng.com](http://www.bfaeng.com)

Rep(s): Raymond H. Frankenberg II, Rick G. Rohlfing, Mark R. Frankenberg

Activities: Commercial / Retail Shopping Development Design; Roadway Design; Trails and Sidewalks Design; Bridge Replacement Design Projects; Topographic Surveys; ALTA Surveys; As-Built Surveys; Construction State-out Marking; Flood Elevation Certificates; Letters of Map Amendments and Revisions (LOMA/LOMR); Hydrologic Modeling and Stormwater Design. Types of clients: Walmart, Spire Energy, Desco, Burger King, Total Access Urgent Care, Several local Municipalities.

## BHMG Engineers, Inc.

16 / 38

630 Jeffco Boulevard  
Arnold, MO 63010  
(636) 296-8600 FAX: (636) 296-8611

Email: [lpirok@bhmg.com](mailto:lpirok@bhmg.com)

URL: [www.bhmg.com](http://www.bhmg.com)

Other Offices In: 1 State

Rep(s): Chuck Fiessinger, Lucas Pirok

Activities: Power Plant Design, T&D Substation Design, T&D Line Design, Relay Protection and Control, Communications, Short Cir-



cuit Analysis, Coordination Studies, Arc Flash Analysis and Mitigation, SCADA (Electric, Water, Gas), Relay Testing and Substation Commissioning, Regulatory Compliance, Oxidation Catalyst, Rate Study (Electric, Gas, Water), System Planning, Spill Containment, Construction Observation.

## **Black & Veatch**

405 / 6,940

8400 Ward Parkway  
P.O. Box 8405  
Kansas City, MO 64114-0405  
(913) 458-2000 FAX: (913) 458-9197  
Email: [info@bv.com](mailto:info@bv.com)  
URL: [www.bv.com](http://www.bv.com)

Branch Office:

16305 Swingley Ridge Road, Suite 230  
Chesterfield, MO 63017  
(636) 536-5800

Other Offices In: 25 States

Rep(s): Bently Green, Mike Orth, Kevin Harder, Sean Borst, Paul Rieger, Jeff Henson

Activities: Specializes in infrastructure development in energy, water, telecommunications, transportation, federal, management consulting and environmental markets. Complete study and design services for water supply, treatment and distribution; biosolids master planning and facilities design, wastewater collection, treatment, reuse, and disposal; telecommunication facilities; cellular phone towers and equipment; solid waste management; tunnels; drainage and flood control; community and regional planning; transportation; bridges, intelligent transportation services (ITS), and highways, resource recovery; marine and hydrology engineering; electric power generation, transmission, distribution and related electric system requirements; rate studies, financial planning and management studies; industrial plant and process design; facilities for national defense; and commercial and institutional building design.

## **Brown and Caldwell**

2 / 1,570

7733 Forsyth Boulevard, Suite 1100  
Clayton, MO 63105  
(314) 296-6143  
Email: [dyates@brwnncald.com](mailto:dyates@brwnncald.com)  
URL: [www.brownandcaldwell.com](http://www.brownandcaldwell.com)

Other Offices In: 30 States

Rep(s): Dave Yates, Jeff Theerman

Activities: BC provides full-service design in the following service areas: wastewater/reclamation, water supply and treatment, water resources / stormwater, conveyance infrastructure, program / construction management, design build, compliance and permitting, remediation / waste management, operations and maintenance. Types of clients include private sector industrial and municipal.

## **Burns & McDonnell**

3,343 / 6,605

9400 Ward Parkway  
Kansas City, MO 64114-3319  
(816) 333-9400 FAX: (816) 822-4320  
URL: [www.burnsmcd.com](http://www.burnsmcd.com)

Branch Office:

425 S. Woods Mill Road, Suite 300  
Chesterfield, MO 63017  
(314) 682-1500 FAX: (314) 682-1600

Other Offices In: 31 States

Rep(s): Michael DeBacker, Paul Fischer, David G. Yeamans, Ray Kowalik, Ron Coker, Breck Washam

Activities: Comprehensive professional engineering and design-build services for private industry and government. Major service sectors include: aviation; bridge design; civil works; community development; air quality; transportation; hazardous and solid waste management; water supply and water resources; stormwater management and flood control; wastewater; environmental studies; military

and defense facilities, commercial, institutional, & industrial facilities; security systems; industrial energy; power generation, transmission, and distribution; chemical process; petrochemicals and food, management services, healthcare and research facilities.

## **Bob D. Campbell & Company, Inc Structural Engineers**

24

4338 Belleview  
Kansas City, MO 64111-3515  
(816) 531-4144 FAX: (816) 531-8572  
Email: [info@bdc-engrs.com](mailto:info@bdc-engrs.com)  
URL: [www.bdc-engrs.com](http://www.bdc-engrs.com)

Rep(s): Michael J. Falbe, Chris Boos, Richard Crabtree, Wayne Davis

Activities: Complete structural engineering services for design of structural systems and buildings; including office, parking garages retail, school, hospital, industrial and municipal buildings along, with special framing systems for industry and architectural expression. In addition to new construction and existing facility renovation, Bob D. Campbell and Company provides full support services for owners and contractors/construction industry through existing building evaluation, peer review, special inspection and specialized construction engineering.

## **CBB**

25

12400 Olive Boulevard, Suite 430  
St. Louis, MO 63141  
(314) 878-6644  
Email: [syanamanamanda@cbbtraffic.com](mailto:syanamanamanda@cbbtraffic.com)  
URL: [www.cbbtraffic.com](http://www.cbbtraffic.com)

Other Offices In: 1 State

Rep(s): Srinivasa Yanamanamanda, Chris Brammeier, Lee Cannon, Shawn Light

Activities: Traffic studies and planning, transportation modeling, intersection design, roadway design, signal design, roundabouts, construction review and inspection, arterial operations, signal timing and coordination, signal turn-ons and programming, freeway studies, bicycle and pedestrian system planning and design, transit studies, ITS. Types of clients include DOTs, private businesses, developers, government agencies, architects, cities and municipalities, engineering firms, and landowners.

Certified Small Business

## **CDG Engineers**

65 / 70

One Campbell Plaza  
St. Louis, MO 63139-1781  
(314) 781-7770 FAX: (314) 781-9075  
Email: [jellington@cdgengineers.com](mailto:jellington@cdgengineers.com)  
URL: [www.cdgengineers.com](http://www.cdgengineers.com)

Other Offices In: 1 State

Rep(s): Jay Ellington, Tim Nugent, Stephen Hilderbrand

Activities: St. Louis-based organization working for utility, mining, industrial, public works and infrastructure clients. Firm expertise includes power generation and industrial projects, bulk materials handling, electrical power and controls, buildings, roads and bridges, sanitary sewer and storm water, parking facilities, recreational facilities including pedestrian and bikeway trails, streetscape enhancements. Specialized design technology services including laser scanning and drone creation of point clouds, and BIM.

## **CDM Smith**

48 / 3,110

9200 Ward Parkway, Suite 320  
Kansas City, MO 64114  
(816) 444-8270 FAX: (816) 444-8232  
Email: [burnscl@cdmsmith.com](mailto:burnscl@cdmsmith.com)  
URL: [www.cdmsmith.com](http://www.cdmsmith.com)  
Other Offices In: 39 States  
Rep(s): Chris Burns, Jessi Veach

Activities: CDM Smith is comprised of more than 5,000 employees whose unwavering focus remains on creating innovative and lasting solutions that improve environmental value, quality of life and economic prosperity. With more than \$1B in annual revenues, we maintain the size, stability and resources to successfully undertake a diverse range of projects, applying local knowledge through a network of more than 100 offices worldwide, while leveraging the full resources and expertise of our global staff. CDM Smith provides integrated solutions in water, environment, transportation, energy and facilities to public and private clients worldwide. As a full-service consulting, engineering, construction, and operations firm, we deliver exceptional client service, quality results and enduring value across the entire project life cycle.

## Civil Design, Inc.

19 / 24

5220 Oakland Avenue  
St. Louis, MO 63110  
(314) 863-5570 FAX: (314) 863-5578  
Email: [vlarose@civildesigninc.com](mailto:vlarose@civildesigninc.com)  
URL: [www.civildesigninc.com](http://www.civildesigninc.com)  
Other Offices In: 3 States

Rep(s): Vicki LaRose, Dennis LaRose, Tricia Bohler  
Activities: CDI provides comprehensive civil engineering and surveying services for Infrastructure + Analytics, Site Development, Structures, Transportation and Water Resources projects. Our capabilities range from pre-project planning, asset mapping and management, site analysis and location studies, hydraulic analysis, storm water drainage studies and design, detention/retention design, environmental documentation, urban and rural road design, utility extensions / relocations, construction permit coordination acquisition, rezoning and use permit presentations, and construction documents. Types of clients include architects, DOT's, MSD, etc.

*Disadvantaged Business Enterprise*

*Women Business Enterprise*

*Certified Small Business*

## CM Archer Group, P.C. dba Archer-Elgin

19

310 East 6th Street  
Rolla, MO 65401  
(573) 364-6362 FAX: (573) 364-4782  
Email: [jmedows@cmarcher.com](mailto:jmedows@cmarcher.com)  
URL: [www.archer-elgin.com](http://www.archer-elgin.com)  
Rep(s): Jeff Medows

Activities: CM Archer Group is a full-service consulting engineering, surveying and architectural design firm located in Rolla, Missouri. Our in-house multi-disciplined design capabilities allow us to provide our clients with a comprehensive range of services in the areas of water, wastewater, transportation, environmental, hydrology, hydraulic structures, stormwater management, structural design and analysis, electrical distribution, infrastructure planning, regulatory review, rate evaluations, land surveys, construction staking, as-built mapping, site development and GIS. Types of clients include municipalities, counties, developers, architects and private clients.

*Certified Small Business*

## Cole & Associates, Inc.

36 / 66

The Powerhouse at Union Station  
401 S. 18th Street, Suite 200  
St. Louis, MO 63103  
(314) 984-9887  
Email: [jharshbarger@colestl.com](mailto:jharshbarger@colestl.com)  
URL: [www.colestl.com](http://www.colestl.com)

Branch Office:  
1520 S. Fifth Street, Suite 307  
St. Charles, MO 63303  
(636) 978-7508

Other Offices In: 2 States

Rep(s): Kevin E. Riggs

Activities: Providing civil engineering, surveying, landscape architecture, planning, GIS, and ADA transition planning for residential, commercial, and municipal clients as well as builders, developers, governmental agencies, commissions, and districts.

## Cook, Flatt & Strobel Engineers, P.A.

25 / 85

1421 E. 104th Street, Suite 100  
Kansas City, MO 64131  
(816) 333-4477 FAX: (816) 333-6688  
Email: [cfse@cfse.com](mailto:cfse@cfse.com)  
URL: [www.cfse.com](http://www.cfse.com)  
Branch Office:  
2017 W. Woodland Street  
Springfield, MO 65807  
(417) 986-4067  
Email: [clepage@cfse.com](mailto:clepage@cfse.com) / [tpolk@cfse.com](mailto:tpolk@cfse.com)

Branch Office:

P. O. Box 1932  
Jefferson City, MO 65101  
(573) 415-7813

Other Offices In: 1 State

Rep(s): Michelle Mahoney, Charlie LePage, Sabin Yanez, Angelo Mannino

Activities: Cook, Flatt & Strobel Engineers, P.A. provide a wide range of engineering services including civil/site, traffic, transportation, structural, utility engineering, and land planning. Working on assignments throughout Kansas, Missouri, Arkansas and Oklahoma, our clients include state agencies, county and city governments, business and industry.

## Crawford, Murphy & Tilly, Inc.

68 / 323

Gateway Tower  
1 Memorial Drive, Suite 500  
St. Louis, MO 63102  
(314) 436-5500 FAX: (314) 436-0723  
Email: [dmeckes@cmtengr.com](mailto:dmeckes@cmtengr.com)  
URL: [www.cmtengr.com](http://www.cmtengr.com)  
Branch Office:  
1631 West Elfindale  
Springfield, MO 65807  
(417) 869-6009 FAX: (417) 869-8129  
Email: [sprange@cmtengr.com](mailto:sprange@cmtengr.com)

Branch Office:

1627 Main Street, Suite 200  
Kansas City, MO 64108  
(816) 272-8318  
Email: [tsander@cmtengr.com](mailto:tsander@cmtengr.com)

Other Offices In: 5 States

Rep(s): Dan Meckes, Kevin Fuller, Ty Sander, Steve Prange, Raed Armouti

Activities: Crawford, Murphy & Tilly, Inc., consulting engineers is a professional corporation offering engineering, environmental, and planning services with specialization in aviation, surface transportation, water resources, civil/site engineering, and construction management. Projects are primarily civil engineering in nature, but also include assignments in the mechanical, electrical and architectural disciplines.

## Cross Discipline Engineering, LLC

9

63 Truman Road, Suite 100  
Marshfield, MO 65706  
(417) 859-4441  
Email: [jbridges@crossdiscipline.com](mailto:jbridges@crossdiscipline.com)  
URL: [www.crossdiscipline.com](http://www.crossdiscipline.com)  
Rep(s): Jeremiah Bridges

Activities: Power System Design – Substations, Transmission Line, Distribution Line, Construction Work Plans, etc. Types of clients include electrical cooperatives, utilities, investor owned utilities, etc.

## Design Group Facility Solutions, Inc.

50 / 1,500

8235 Forsyth Boulevard, Suite 900  
St. Louis, MO 63105  
(314) 778-4300  
Email: [gina.pappa@bwdesigngroup.com](mailto:gina.pappa@bwdesigngroup.com)  
URL: [www.bwdesigngroup.com](http://www.bwdesigngroup.com)

Other Offices In: 24 States

Rep(s): Gina Pappa, Mark Baum, David Wittliff

Activities: Architecture and multidisciplinary engineering of facilities, utilities, process plant, packaging, and control systems. Types of clients include private sector manufacturers of products and technology in the Food & Beverage, Life Sciences, Semiconductor, and General Industrial markets.

### **Donohue & Associates, Inc.**

4 / 110

12400 Olive Boulevard, Suite 120

Chesterfield, MO 63017

(636) 536-7042 FAX: (636) 536-7043

Email: [rneath@donohue-associates.com](mailto:rneath@donohue-associates.com)

URL: [www.donohue-associates.com](http://www.donohue-associates.com)

Other Offices In: 5 States

Rep(s): Robert J. Neath

Activities: Consulting engineering for all phases of water, wastewater, and stormwater projects. Types of clients include municipal and industrial.

### **EDM Incorporated**

23

220 Mansion House Center

St. Louis, MO 63102-1902

(314) 231-5485 FAX: (314) 231-8167

Email: [edm@edm-inc.com](mailto:edm@edm-inc.com)

URL: [www.edm-inc.com](http://www.edm-inc.com)

Other Offices In: 1 State

Rep(s): Gholam Masoumy, Len Madalon, Ramona Nicula, Greg Raffaele

Activities: Civil, structural, architectural, electrical, HVAC, plumbing and fire protection services are provided to a diverse group of governmental, commercial, institutional and industrial clients. Projects include major and special structures, roads, bridges, site engineering, power and lighting in buildings, high voltage electrical service, space conditioning, energy conservation, fire suppression systems, feasibility studies, riverfront development, and expert testimony. Services include project management, engineering and architectural consultation, and design build engineering support.

### **EFK Moen, LLC**

28 / 49

13523 Barrett Parkway Drive, Suite 250

Ballwin, MO 63021

(314) 394-3100 FAX: (314) 394-3199

Email: [dleilers@efkmoen.com](mailto:dleilers@efkmoen.com)

URL: [www.efkmoen.com](http://www.efkmoen.com)

Branch Office:

2536 S. Old Highway 94, Suite 226

St. Charles, MO 63303

(636) 244-3747

Other Offices In: 2 States

Rep(s): Linda Moen, Darrell Eilers, P.J. Kronlage, Chris Linneman

Activities: EFK Moen is a civil engineering and professional land surveying firm with an emphasis in roadway-highway-interstate and bridge designs. Services are provided to a wide range of public and private sector clients including state DOT's, counties and municipalities; engineering firms, design-build teams, universities and commercial developers. Our services include professional land surveying, structural-bridge design, stakeholder involvement plans, feasibility-conceptual studies, traffic studies, interchange design, geometric layout for roadways, trails and sites, ADA compliance, hydraulic studies, stormwater drainage design, detention design, erosion control, traffic signal design, roadway and interstate signing plans, roadway lighting, construction staging, and construction management services.

*Certified Small Business*

*Disadvantaged Business Enterprise*

*Women Business Enterprise*

### **Engineered Corrosion Solutions**

13

11336 Lackland Road

St. Louis, MO 63146

(314) 432-1377 FAX: (314) 439-9411

Email: [info@ecscorrosion.com](mailto:info@ecscorrosion.com)

URL: [www.ecscorrosion.com](http://www.ecscorrosion.com)

Rep(s): Lucas Kirn, Jeff Kochelek

Activities: Engineered Corrosion Solutions (ECS) is a corrosion engineering firm specializing in helping clients understand and manage risk associated with leaking fire sprinkler systems. The risks associated with corrosion in fire sprinkler systems include life safety risk, structure risk, property risk and business continuity risk. Corrosion in fire sprinkler systems leads to plugging problems, reduced sprinkler performance, water leak damage and reduced service life of the systems. Our goal is to define and understand the root causes of corrosion in fire sprinkler systems and to provide devices and services that can bring about a reduction in those risks and associated costs. ECS offers a suite of corrosion management devices and treatment programs that address the needs of all water-based fire sprinkler systems. Wet Pipe Nitrogen Inerting (WPNI) and Dry Pipe Nitrogen Inerting (DPNI) technology from ECS completely controls internal corrosion. ECS also offers a suite of analytical and assessment services to identify the root causes of corrosion and meet the fire sprinkler system inspection requirements by the NFPA. These services include internal video scoping, system failure review, water and deposit analysis, and failed pipe analysis.

### **Engineering Design Source, Inc. (EDSI)**

25 / 27

16141 Swingley Ridge Road, Suite 300

Chesterfield, MO 63017

(636) 537-5585 FAX: (636) 537-0275

Email: [gj@engdesignsource.com](mailto:gj@engdesignsource.com)

URL: [www.engdesignsource.com](http://www.engdesignsource.com)

Other Offices In: 1 State

Rep(s): George John, Rick Olson, Brett Brooks

Activities: Civil engineering design work including structural / bridge design, site and grading plans, roadway and highway design, traffic modeling, traffic studies, traffic signal plans, storm & sanitary sewer, surveying, construction inspection, hydraulic modeling, drainage design, and program management. Types of clients: government agencies, design consultants.

*Disadvantaged Business Enterprise*

*Minority Business Enterprise*

### **Engineering Surveys and Services**

47

1113 Fay Street

Columbia, MO 65201

(573) 449-2646 FAX: (573) 499-1499

Email: [rkasmann@ess-inc.com](mailto:rkasmann@ess-inc.com)

URL: [www.ess-inc.com](http://www.ess-inc.com)

Rep(s): Ross Kasmann, Dave Bennett, Ben Ross, Josh Lehmen

Activities: Since 1954, Engineering Surveys & Services has delivered solutions to support the built environment of mid-Missouri. We serve clients in the public sector and private industry from Missouri offices in Columbia, Jefferson City and Sedalia. Each location provides civil and environmental engineering planning and design, land surveying, geotechnical services, and construction observation/materials testing to help our clients/partners deliver a variety of projects in transportation, water (drinking, storm, waste), energy, and site development for institutional and commercial facilities. Types of clients include state and local governments, developers, educational institutions, industries, architects, engineering firms, non-profit organizations.

### **Farnsworth Group, Inc.**

85 / 520

20 Allen Avenue, Suite 200

St. Louis, MO 63119-2304

(314) 962-7900 FAX: (314) 962-1253

Email: [goconnor@f-w.com](mailto:goconnor@f-w.com)

URL: [www.f-w.com](http://www.f-w.com)

Other Offices In: 7 States

Rep(s): Robert E. Polk, Jr., Michelina Hansel, Greg O'Connor, Doug Bonner

Activities: Farnsworth Group is a multi-discipline E/A firm providing design and other professional/technical services to a diverse range of public and private clients including governmental, corporate, institutional, commercial, industrial, railroad, residential, healthcare, educational and recreational. Major services include civil and structural engineering, transportation and railroad engineering, environmental engineering, mechanical, plumbing and electrical engineering, oil and gas engineering, architecture, telecommunications, commissioning, land surveying, and construction management. Special services include total building commissioning, planning, zoning, energy audits, traffic signals, sustainable and LEED Consulting, fire protection, stormwater management and hydraulic analysis, grant applications and project financing. Farnsworth Group is an ENR Top 250 Design Firm.

### Frontenac Engineering Group, Inc.

14

2725 Sutton Boulevard  
St. Louis, MO 63143  
(314) 644-2200 FAX: (314) 644-0645  
Email: [steven@fe-stl.com](mailto:steven@fe-stl.com)  
URL: [www.fe-stl.com](http://www.fe-stl.com)

Rep(s): Steven Miller

Activities: Site analysis, site development design, roadway design/reconstruction, utility/sewer main extension and replacement, zoning permitting, BMP inspections, flood plain studies, feasibility studies, contract administration, structural inspection/evaluation, cost estimation, project management, seismic rehabilitation, retrofitting/code compliance, onsite construction, structural analysis and design, insurance claims. Types of clients include institutions, municipalities, parks, hospitals, army/DOD wavehouses, commercial, schools/colleges.

### Garver

21 / 713

7509 NW Tiffany Springs Parkway, Suite 200  
Kansas City, MO 64153  
(816) 298-6465  
Email: [FPBlakemore@GarverUSA.com](mailto:FPBlakemore@GarverUSA.com)  
URL: [www.garverusa.com](http://www.garverusa.com)

Branch Office:

230 Bemison Avenue, Suite 500  
St. Louis, MO 63105  
(314) 269-1057

Other Offices In: 12 States

Rep(s): Frank Blakemore

Activities: Garver provides consultant services for aviation, transportation, water, energy, industrial, development, federal, architecture, survey and construction engineering and inspection projects. Types of clients include DOT, Municipal, Contractors, and Counties.

### GBA, Inc.

14 / 275

Mainmark Building, Suite 800  
1627 Main Street  
Kansas City, MO 64108-1300  
(816) 421-1300 FAX: (816) 842-1138  
Email: [gba@gbateam.com](mailto:gba@gbateam.com)  
URL: [www.gbateam.com](http://www.gbateam.com)

Branch Office:

119 S. Main Street  
St. Charles, MO 63301  
(636) 240-2444  
Email: [merdtmann@gbateam.com](mailto:merdtmann@gbateam.com)

Branch Office:

16305 Swingley Ridge Road, Suite 103  
Chesterfield, MO 63017  
(314) 231-0100

Other Offices In: 6 States

Rep(s): Jim Jarrett, Timothy J. Ross, Mike Erdtmann

Activities: Full-service engineering and architectural disciplines in civil, structural, mechanical, electrical, fire protection, sanitary, transportation and traffic engineering, architecture, land surveying, construction management/observation, and environmental. Infrastructure markets served include transportation, water environment, and private land development. Building markets served include life sciences, critical facilities, corporate office, municipal facilities and various other building types. Clients include federal, state, municipal, county as well as the private sector.

### GeoEngineers, Inc.

30 / 345

2155-A W. Chesterfield Boulevard  
Springfield, MO 65807  
(417) 831-9700 FAX: (417) 831-9777  
Email: [jrobison@geoengineers.com](mailto:jrobison@geoengineers.com)  
URL: [www.geoengineers.com](http://www.geoengineers.com)

Other Offices In: 8 States

Rep(s): Jonathan L. Robison, Mark A. Miller

Activities: GeoEngineers, founded in 1980 and headquartered in Seattle, Washington, is an integrated earth science and technology firm with 16 offices in Missouri, Idaho, Washington, Oregon, California, Utah, North Carolina and Louisiana. GeoEngineers specializes in crafting unique geotechnical, environmental, and ecological solutions for the energy, transportation, water and natural resource, federal, and development sectors. The GeoEngineers' Springfield, Missouri office specializes in geotechnical investigations and engineering design projects; trenchless technologies; geophysical evaluations; environmental engineering, investigation, and compliance; and construction observation services. In fact, GeoEngineers is currently ranked as one of the top 25 trenchless design firms in the nation having completed hundreds of horizontal directional drilling (HDD) and Direct Pipe® projects throughout the United States and as far away as Africa. GeoEngineers also assists with geological hazard evaluations and permitting along new and existing linear corridor routes such as pipelines, highways, railroads, and transmission lines.

### Geotechnology, Inc.

81 / 271

11816 Lackland Road, Suite 150  
St. Louis, MO 63146  
(314) 997-7440 FAX: (314) 997-2067  
Email: [jweinhold@geotechnology.com](mailto:jweinhold@geotechnology.com)  
URL: [www.geotechnology.com](http://www.geotechnology.com)

Other Offices In: 8 States

Rep(s): Edmond D. Alizadeh, Frank Callanan, Matt McQuality, Pam Hobbs, Joel Weinhold

Activities: Geotechnology provides a comprehensive range of applied earth and environmental sciences; geotechnical engineering; soils, rock and construction materials testing; non-destructive steel testing; deep foundation testing (PDA, PIT, CSL); geophysics applied to karst exploration, levee evaluation and geologic site characterization; subsurface utility engineering; wetlands consulting; water resources and drilling. Technical expertise, thorough knowledge of regulations, and strong management capabilities form a solid foundation for resolution of the most complex and challenging engineering issues. Responsiveness is aided through one of the most comprehensive materials testing labs in the Midwest, AASHTO accredited and USACE-validated testing laboratories, 20 drill rigs, a CPT rig, a 3230 GeoProbe combo rig, NDT and geophysical equipment.

### GHD, Inc.

8 / 2,300

11971 Westline Industrial Drive, Suite 101  
St. Louis, MO 63146  
(314) 438-1878  
Email: [john.killips@ghd.com](mailto:john.killips@ghd.com)  
URL: [www.ghd.com](http://www.ghd.com)

Other Offices In: 15 States



Rep(s): John Killips, Bob Januska

Activities: GHD is one of the world's leading professional services companies operating in the global markets of water, energy and resources, environment, property and buildings, and transportation. We provide engineering, environmental, advisory, digital, and construction services to private and public sector clients. Established in 1928 and privately owned by our people, GHD operates across five continents - Asia, Australia, Europe, North and South America - and the Pacific region. We employ more than 10,000 people in 200+ offices to deliver projects with high standards of safety, quality and ethics across the entire asset value chain. Driven by a culture of client service excellence, we connect the knowledge, skill and experience of our people with innovative practices, technical capabilities and robust systems to create lasting community benefits. Committed to sustainable development, GHD improves the physical, natural, and social environments of the many communities in which we operate. We are guided by our workplace health, safety, quality, and environmental management systems, which are certified to the relevant international standards (ISO and OHSAS). In alignment with the global demands of water, energy and urbanization, our aim is to exceed the expectations of our clients and contribute to their success.

### **GREDELL Engineering Resources, Inc.** 15 / 18

1505 E. High Street  
Jefferson City, MO 65101  
(573) 659-9078 FAX: (573) 659-9079  
Toll Free #: (855) 420-3831  
Email: [tomg@ger-inc.biz](mailto:tomg@ger-inc.biz)  
URL: [www.ger-inc.biz](http://www.ger-inc.biz)

Branch Office:  
636 W. Republic Road, Bldg. D, Suite D-100  
Springfield, MO 65807  
(417) 890-6200 FAX: (417) 351-5550  
Toll Free #: (855) 417-2617  
Email: [rickr@ger-inc.biz](mailto:rickr@ger-inc.biz)

Other Offices In: 1 State

Rep(s): Thomas R. Gredell, Bruce Dawson

Activities: GREDELL Engineering Resources, Inc. is a Missouri-based firm that is licensed in Missouri, Kansas, Iowa and Illinois. We provide civil, geotechnical and environmental engineering and geologic studies, including environmental design; civil engineering infrastructure design; geotechnical design; and geologic investigations. Civil projects include geotechnical investigation and design; stormwater management and design; wetlands treatment; streams and lakes designs and renovations; roadway and bridge design and bridge scour design; and site development. Environmental projects include municipal/industrial containment/management; subsurface/ground-water investigations; wastewater collection and treatment systems; river and streambank stabilization; environmental permitting, compliance and management systems for solid waste, hazardous waste, air pollution residuals, water, wastewater; site remediation/voluntary clean-up; risk-based corrective action; construction observation; SWPPP and SPCC plans. Clients include governmental entities (cities, counties, and state), private companies, electric utilities and limestone producers.

*Certified Small Business*

### **Hanson Professional Services Inc.** 23 / 393

600 Washington Avenue, Suite 950  
St. Louis, MO 63101  
(314) 770-0467 FAX: (314) 770-0428  
Email: [hgotschall@hanson-inc.com](mailto:hgotschall@hanson-inc.com)  
URL: [www.hanson-inc.com](http://www.hanson-inc.com)

Branch Office:  
1001 E. 101st Terrace, Suite 120  
Kansas City, MO 64131  
(913) 214-3180

Branch Office:  
150 S. Fifth Street, Suite 220  
St. Charles, MO 63303  
(314) 770-0467

Other Offices In: 10 States

Rep(s): Howard Gotschall

Activities: Hanson Professional Services Inc. is a national, employee-owned consulting firm providing a full range of engineering planning and allied services to clients. The firm provides civil/structural and transportation engineering; railroad and airport planning and design; construction and data management; design-build; economic development assistance; geotechnical, environmental and waste management services; hydrologic and hydraulic engineering; surveying; land acquisition; facility and freight logistics; mechanical and electrical engineering; and inland port planning and engineering.

### **HDR**

156 / 9,020

10450 Holmes Road, Suite 600  
Kansas City, MO 64131-3471  
(816) 360-2700 FAX: (816) 360-2777  
Email: [hdr@hdrinc.com](mailto:hdr@hdrinc.com)  
URL: [www.hdrinc.com](http://www.hdrinc.com)

Other Office:

3741 NE Troon Drive  
Lee's Summit, MO 64064  
(800) 495-9830 FAX: (816) 554-3061

Branch Office:

401 S. 18th Street, Suite 300  
St. Louis, MO 63103  
(314) 425-8300 FAX: (314) 425-8301

Branch Office:

187 E. David  
P.O. Box 969  
Forsyth, MO 65653  
(417) 546-3218 FAX: (417) 546-5324

Branch Office:

2139 E. Primrose, Suite E  
Springfield, MO 65804  
(417) 865-4083 FAX: (417) 865-4085

Other Offices In: 33 States

Rep(s): Barry O. Rolle, Cory Imhoff, Joe Drimmel, Stan Christopher, Patrick Young

Activities: Founded in 1917, HDR is an architectural, engineering and consulting firm that excels at complex projects and solving challenges for our clients. With locations across the nation and abroad, we deliver more than 50 different design and scientific disciplines. The strength of this professional network allows us to deliver big-company resources with small company service. Our operating philosophy is to be an expertise-driven national firm that delivers tailored solutions through a strong local presence. Our ability to draw upon company-wide resources and expertise is a great strength in meeting and exceeding our clients' expectations. In 2008, HDR acquired Archer Engineers, a well-respected full service Environmental/Civil Engineering consulting firm. Archer traditionally has provided outstanding service to a wide range of governmental, industrial and private development clients. HDR has full services in water and wastewater systems, transportation systems, environmental and resource management, land planning, surveying, construction administration, and design/build services.

### **Hg Consult, Inc.**

2 / 3

9111 NE 79th Street  
Kansas City, MO 64158  
(816) 912-4720  
Email: [eharrison@HgCons.com](mailto:eharrison@HgCons.com)  
URL: [www.HgCons.com](http://www.HgCons.com)

Other Offices In: 3 States

Rep(s): Earl Harrison, Steve Wells

Activities: Hg Consult, Inc. practices general Civil Engineering and Planning including transportation, traffic, utilities, stormwater, wastewater, land development, and municipal engineering. The ownership background includes experience in the design of freeways, urban arterials, underground utilities, planning studies, traffic studies, street lighting, and waste / stormwater collection systems. Our client base includes local, county, and state governments, private developers, and other consultants.

*Minority Business Enterprise*

## HNTB Corporation

519 / 4,021

715 Kirk Drive  
Kansas City, MO 64105  
(816) 472-1201 FAX: (816) 472-4060  
Email: [kwallace@hntb.com](mailto:kwallace@hntb.com); [wfeuerborn@hntb.com](mailto:wfeuerborn@hntb.com)  
URL: [www.hntb.com](http://www.hntb.com)

### Branch Office:

211 North Broadway, Suite 950  
St. Louis, MO 63102  
(314) 241-2808 FAX: (314) 241-1914

Other Offices In: 27 States

Rep(s): Kevin Wallace, Chris Price, Wayne Feuerborn, Jeff Smith, Tirzah Gregory, Gretchen Ivy, Marc Whitmore

Activities: HNTB Corporation is an employee-owned infrastructure firm serving public and private owners and contractors. With more than a century of service in the U.S., HNTB understands the life cycle of infrastructure and addresses clients' most complex technical, financial and operational challenges. Professionals nationwide deliver a full range of infrastructure-related services, including award-winning planning, design, program management and construction management. For more information, visit [www.hntb.com](http://www.hntb.com).

## Horner & Shifrin, Inc.

69 / 80

401 S. 18th Street, Suite 400  
St. Louis, MO 63103  
(314) 531-4321 FAX: (314) 531-6966  
Email: [srdonahue@hornershifrin.com](mailto:srdonahue@hornershifrin.com)  
URL: [www.hornershifrin.com](http://www.hornershifrin.com)

### Branch Office:

4061 Highway PP, Suite 1  
Poplar Bluff, MO 63901  
(573) 727-9666 FAX: (573) 727-9648

### Branch Office:

101 Laura K Drive, Suite 101  
O'Fallon, MO 63366  
(636) 329-9296

Other Offices In: 1 State

Rep(s): Steve Donahue, Gino Bernardez, Michael Banashek, Jarrett Jasper

Activities: A 100-percent employee-owned, award-winning, multidisciplinary engineering firm focused on providing our clients with exceptional solutions and service since 1933. Offering a full range of engineering expertise, including water supply, treatment and distribution systems; wastewater collection, lift station and treatment facilities; roads, streets, highways, bridges and interchanges; ports and site development; GIS design and hosting; storm water and flood protection; mechanical, electrical, plumbing, and fire protection studies and design services; and construction engineering services.

## Howe Company, LLC

10

804 E. Patton Street  
Macon, MO 63552  
(660) 395-4693 FAX: (660) 395-4694  
Email: [shannon@howecompany.com](mailto:shannon@howecompany.com)  
URL: [www.howecompany.com](http://www.howecompany.com)

Rep(s): Shannon J. Howe

Activities: Local transportation projects including roads, streets, and bridges. Structural engineering for temporary and permanent structures. Water and wastewater engineering services include system evaluations and improvements. Experienced with project programming, surveying, studies, preliminary design, right of way, final design, bidding services, construction observation, construction contract administration, and project close out. Types of clients include state government, county governments, municipalities, rural communities, schools, port authorities, industrial development authorities, contractors, private developers, companies, and private individuals.

## HR Green, Inc.

28 / 518

16020 Swingley Ridge Road, Suite 205  
St. Louis, MO 63017  
(636) 519-0990 FAX: (636) 519-0996  
Email: [jdohrmann@hrgreen.com](mailto:jdohrmann@hrgreen.com)  
URL: [www.hrgreen.com](http://www.hrgreen.com)

### Branch Office:

1475 Fairgrounds Road, Suite 100  
St. Charles, MO 63301  
(636) 519-0990 FAX: (636) 519-0996

Other Offices In: 8 States

Rep(s): Jason Dohrmann, Dan Shane, Dave Maxwell, Josiah Holst

Activities: Established in 1913, HR Green, Inc. is employee owned. We collaborate across geographies and markets to provide engineering, technical, and management solutions that build communities and improve lives for our clients and the people they serve. We provide the following comprehensive services: Transportation, Water, Governmental Services, Land Development, Environmental and Construction.

## IMEG Corp.

55 / 1,200

15 Sunnen Drive, Suite 104  
St. Louis, MO 63143-3819  
(314) 645-1132 FAX: (314) 645-1173  
URL: [www.imegcorp.com](http://www.imegcorp.com)

Other Offices In: 12 States

Rep(s): Steve Rhoades

Activities: IMEG is one of the largest engineering consulting firms in the U.S. specializing in building high-performance structures, infrastructure, and strong client relationships. With more than 40 offices and 1,300 team members, we serve regions and markets, putting relationships first while delivering the highest quality work and expertise.

## Jacobs

280 / 70,000

One Financial Plaza  
501 North Broadway  
St. Louis, MO 63102  
(314) 335-4000 FAX: (314) 335-5141  
Email: [michael.mccarty@jacobs.com](mailto:michael.mccarty@jacobs.com)  
URL: [www.jacobs.com](http://www.jacobs.com)

### Branch Office:

Two Pershing Place  
2300 Main, Suite 325  
Kansas City, MO 64108  
(816) 421-5550 FAX: (816) 421-5560  
Email: [dhuck@jacobs.com](mailto:dhuck@jacobs.com)

Other Offices In: 47 States

Rep(s): J. Finke, J. Kokal, M. McCarty, G. Horn

Activities: Complete architecture and engineering professional services for development, design, construction and operations in these markets: Transportation, Federal, Mission Critical, Healthcare, Higher Education, Sports & Recreation, Water and Wastewater, Industrial, and Public Works. The company provides these services to public and private sector clients world-wide.

## Juneau Associates, Inc., P.C.

6 / 52

330 N. Fourth Street  
St. Louis, MO 63102  
(314) 241-4444 FAX: (314) 909-1331  
Email: [wherndon@jaipc.com](mailto:wherndon@jaipc.com)  
URL: [www.jaipc.com](http://www.jaipc.com)

Other Offices In: 1 State

Rep(s): Wesley W. Herndon, Charles E. Juneau

Activities: Bridge replacement & bridge repair projects including topographic surveys, hydraulics, preparation of preliminary, right-of-way and final construction documents. Bridge evaluation projects including routine, in-depth and fracture critical inspections. Design and detailing of complex and unusual industrial foundations. Seismic retrofit of steel

structures. Design and detailing of tunnel structures. Types of clients include municipalities, counties, State Departments of Transportation, industries.

*Certified Small Business*

*Veteran Owned Small Business (VOSB)*

### **KimHEC LLC**

9

5326 Southwest Avenue

St. Louis, MO 63139

(314) 276-9575

Email: [kim.cole@kimhec.com](mailto:kim.cole@kimhec.com)

URL: [www.kimhec.com](http://www.kimhec.com)

Rep(s): Kimberly A. Cole

Activities: KimHEC is a specialized Environmental Engineering Consulting firm which specializes in pretreatment program development and implementation. KimHEC assists in local limit evaluations, enforcement response plans, and implementation of pretreatment programs. We provide data management services associated with pretreatment programs and wastewater treatment plant operations.

*Women Business Enterprise*

### **Kimley-Horn and Associates, Inc.**

15 / 5,000

805 Pennsylvania Avenue, Suite 150

Kansas City, MO 64105

(816) 652-0350

Email: [jeff.mckerrrow@kimley-horn.com](mailto:jeff.mckerrrow@kimley-horn.com)

URL: [www.kimley-horn.com](http://www.kimley-horn.com)

Other Offices In: 30 States

Rep(s): Jeff D. McKerrrow, Charles Touzinsky

Activities: Full-service engineering firm providing engineering, planning, and landscape architectural services. Types of clients include public sector (cities, counties, DOT's, transit agencies, port authorities) and private sector.

### **Klingner & Associates, P.C.**

14 / 101

4510 Paris Gravel Road

Hannibal, MO 63401

(573) 221-0020 FAX: (573) 221-0012

URL: [www.klingner.com](http://www.klingner.com)

Branch Office:

907 East Ash Street

Columbia, MO 65201

(573) 355-5988

Other Offices In: 2 States

Rep(s): John J. Neyens, Mark C. Bross, B. Joseph Sick

Activities: Klingner & Associates, P.C. is a multi-discipline engineering/architectural consulting firm established in 1905, currently employing over 110 people throughout six (6) offices in Missouri, Illinois and Iowa. Our talented and experienced staff provides civil, mechanical-electrical-plumbing, transportation, water/wastewater, water resources, geotechnical, environmental and structural engineering, planning, land surveying, architecture, landscape architecture and interior design. The staff includes licensed professional engineers, geologists, structural engineers, architects, landscape architects, interior designers, engineering technicians, construction inspectors, professional land surveyors, asbestos inspectors, and administrative support staff. Types of clients include individuals, industrial and commercial businesses, municipalities and government agencies.

### **Lamp Rynearson, Inc.**

30 / 180

9001 State Line Road, Suite 200

Kansas City, MO 64114

(816) 361-0440 FAX: (816) 361-0045

Email: [info@lamprynearson.com](mailto:info@lamprynearson.com)

URL: [www.lamprynearson.com](http://www.lamprynearson.com)

Other Offices In: 2 States

Rep(s): Tony O'Malley, Dan Miller, Andy Smith, Laura Gray

Activities: Lamp Rynearson, Inc. is an employee-owned multi-disciplined engineering and consulting firm providing quality professional services to municipalities, counties, state and federal governments, utility districts, institutional, and private clients throughout the Midwest. For over 60 years, clients have relied on our talented professional staff for community changing projects that fulfill our Purpose Statement, "Leaving a legacy of enduring improvements to our communities." Core markets include aquatic facilities, city engineering, drinking water, transportation engineering, stormwater, wastewater, planning, airport engineering, land development, architecture, land surveying, construction administration and GIS. Other services provided include NPDES permitting, design-build, sustainable design, landscape architecture, redevelopment and structural engineering. Offices in Kansas City, MO, Omaha, NE, Fort Collins, CO, and Lakewood, CO.

### **Lee Engineering and Associates, L.L.C.**

7

1200 E. Woodhurst Drive, Suite D200

Springfield, MO 65804

(417) 886-9100 FAX: (417) 886-9336

Email: [dlee@leeengineering.biz](mailto:dlee@leeengineering.biz)

Rep(s): Derek Lee, Dalton Patterson, Jason Haynes

Activities: Lee Engineering serves as a civil engineering firm that works with site and grading plans, designing, sanitary sewer and detention basins, public works, and public improvement plans. We also have one registered land surveyor and full-time survey team. Types of clients include city and county qualified / commercial.

### **Leigh & O'Kane, L.L.C.**

9

250 NE Mulberry Street, Suite 201

Lee's Summit, MO 64086

(816) 444-3144 FAX: (816) 444-9655

Email: [abush@leok.com](mailto:abush@leok.com)

URL: [www.leok.com](http://www.leok.com)

Rep(s): Amanda Bush, Adam O'Kane

Activities: Structural engineering for vertical and infrastructure construction for commercial, industrial and public institutions. Projects include bridge and infrastructure design and inspections, hospitals, schools, universities, offices, churches, shopping centers, fire stations and community centers, correctional facilities, industrial manufacturing facilities, and civic centers. Material testing, resident inspections and special inspections during construction.

*Disadvantaged Business Enterprise*

*Women Business Enterprise*

### **Lochmueller Group**

16 / 170

411 North 10th Street, Suite 200

St. Louis, MO 63101

(314) 621-3395 FAX: (314) 621-3288

Email: [ssmith@lochgroup.com](mailto:ssmith@lochgroup.com)

URL: [www.lochgroup.com](http://www.lochgroup.com)

Branch Office:

820 E. Main Street, Suite 207

St. Charles, MO 63301

(314) 621-3395 FAX: (314) 621-3288

Other Offices In: 3 States

Rep(s): Scott J. Smith

Activities: Civil engineering design and infrastructure planning firm providing services to both public and private clientele. Expertise includes travel demand modeling; traffic simulation modeling and analysis; transportation design (highway/roadway design; bridge design; traffic signal design); ROW appraisal and acquisition; environmental evaluation; and water resources engineering. Types of clients include state DOT's, municipalities, government agencies, private developers.

**H.W. Lochner****30 / 600**

16105 113th Street, Suite 107  
Lenexa, KS 66219  
(816) 945-5840 FAX: (816) 945-5841  
Email: [info@hwlochner.com](mailto:info@hwlochner.com)  
URL: [www.hwlochner.com](http://www.hwlochner.com)  
Other Offices In: 16 States  
Rep(s): Mark L. Johnston, Matt Jacobs, Chris Flageolle

Activities: Lochner is a full-service engineering, design and consulting firm. Our many disciplines include: Highway & Roadway Design, Structural Design, Construction Management and CEI Services, Airport Planning & Design, Multi-Modal Planning & Design, Hydraulics and Drainage Design, Municipal Services, Public-Private Partnership (P3) Services, Design-Build Services, Public Involvement, Context Sensitive Solutions, Planning & Environmental Services, Brownfields Services, Utility Coordination & Relocation, Traffic Engineering & Transportation Planning, Electrical, and Rail & Transit.

**M3 Engineering Group PC****15**

911 Washington Avenue, Suite 620  
St. Louis, MO 63101  
(314) 558-0699 FAX: (314) 588-9442  
Email: [marjorie.melton@m3eg.com](mailto:marjorie.melton@m3eg.com)  
URL: [www.m3eg.com](http://www.m3eg.com)

Rep(s): Marjorie L. Melton, Marc Eshelman

Activities: M3 Engineering Group P.C. (M3) is a consulting firm that provides engineering planning, design and LEED support for public and private clients in variety of areas of Civil and Environmental Engineering, including water, wastewater, stormwater, roadway, structural, site development, asset management, and sustainability.

*Disadvantaged Business Enterprise  
Minority Business Enterprise  
Women Business Enterprise*

**McClure****130**

1901 Pennsylvania  
Columbia, MO 65202  
(573) 814-1568 FAX: (573) 814-1128  
Email: [amcvicker@mcclurevision.com](mailto:amcvicker@mcclurevision.com)  
URL: [www.mcclurevision.com](http://www.mcclurevision.com)

Branch Office:

1700 Swift, Suite 100  
North Kansas City, MO 64116  
(816) 756-0444 FAX: (816) 756-1763  
Email: [mkellam@mcclurevision.com](mailto:mkellam@mcclurevision.com)

Branch Office:

107 Butler Street  
P. O. Box 366  
Macon, MO 63552-0366  
(660) 385-6441 FAX: (660) 385-6614  
Email: [dstith@mcclurevision.com](mailto:dstith@mcclurevision.com)

Other Offices In: 4 States

Rep(s): Cody Daily, Chris Sander, Aaron McVicker

Activities: Engineering services including studies, design services and construction phase services for municipalities, governmental agencies and private clients. Projects include water and wastewater systems, transportation, traffic studies, parking lots, roadways, stormwater, downtown improvements, aviation and structural. Planning and design for industrial parks and private developments. Municipal assistance with regulation establishment and enforcement, rate studies and reports. Structural includes bridges, new structures and existing structure evaluation. Boundary and topographic surveys.

**MECO Engineering, Inc.****30**

3120 Palmyra Road  
Hannibal, MO 63401  
(573) 221-4048 FAX: (573) 221-4377  
Email: [mecoh@mecoengineering.com](mailto:mecoh@mecoengineering.com)  
URL: [www.mecoengineering.com](http://www.mecoengineering.com)

Branch Office:

2701 Industrial Drive  
Jefferson City, MO 65102  
(573) 893-5558 FAX: (573) 893-5404  
Email: [mecoic@mecoengineering.com](mailto:mecoic@mecoengineering.com)

Branch Office:

110 West Adams, Suite 101  
Branson, MO 65616  
(417) 986-6445

Other Offices In: 1 State

Rep(s): Scott E. Vogler, James D. Bensman, Max F. Middendorf

Activities: Civil, structural, electrical and mechanical engineer, and land surveying services.

**Midwest Environmental Consultants Co.****11**

2009 E. McCarty Street, Suite 2  
Jefferson City, MO 65101  
(573) 636-9454 FAX: (573) 761-4200  
Email: [info@mecpc.com](mailto:info@mecpc.com)  
URL: [www.mecpc.com](http://www.mecpc.com)

Branch Office:

1350 East Kingsley, Suite E  
Springfield, MO 65809  
(417) 886-9200 FAX: (417) 886-9876  
Email: [blindsey@mecpc.com](mailto:blindsey@mecpc.com)

Rep(s): Lindsey R. Henry

Activities: Midwest Environmental Consultants provides professional engineering services pertaining to environmental assessment, design, remediation, permitting and compliance. Service areas include Environmental Audits (on-site compliance audits); Air Quality (permitting, EIQs, ACC and MACT reporting, opacity observation); Environmental Assessments (Phase 1, Phase 2 and Phase 3); Water (NPDES permits, SPCC plans, SWPPP, low impact development, stormwater management, constructed wetlands); Solid Waste (landfills, transfer stations, planning, regulatory compliance); UST Closure (oversight, management, and reporting); Hazardous Waste (voluntary clean-up, risk assessment; site characterization and remediation); Risk Management Plans (RMPs); and Land Reclamation. Clients include private companies, industry, municipalities, trade associations, financial institutions, law firms, federal and state regulatory agencies.

*Certified Small Business*

**Milestone Engineering, Inc.****7**

1445 E. Republic Road, Suite 310  
Springfield, MO 65804  
(417) 893-6655 FAX: (417) 893-6666  
Email: [brad.tate@mei-eng.us](mailto:brad.tate@mei-eng.us)

Rep(s): Bradley L. Tate

Activities: Civil engineering planning, design and construction inspection services to Municipal, DOT and private clients across the Midwest. The majority of our projects include freight rail projects, conceptual planning/engineering studies and municipal street and bridge design. Professional services may include topographic surveying, grading plans, track design, construction permitting, structural design and detailing, hydrology and hydraulic design, roadway design, cost estimating, project management and scheduling. Types of clients include Class I Railroad private clients, industrial clients, municipal and DOT.

**Modjeski and Masters, Inc.****4 / 200**

326 South 21st Street, Suite 301  
St. Louis, MO 63103  
(314) 588-8115  
Email: [dwpetermeier@modjeski.com](mailto:dwpetermeier@modjeski.com)  
URL: [www.modjeski.com](http://www.modjeski.com)

Other Offices In: 10 States

Rep(s): David Petermeier

Activities: Modjeski and Masters, Inc. is a structural engineering firm specializing in all aspects of bridge engineering. Type of clients include: Federal, State and local agencies, railroads, port authorities and any agency which has a bridge under its jurisdiction.



**Oates Associates, Inc.****7 / 39**

720 Olive, Suite 700  
St. Louis, MO 63101  
(314) 588-8381 FAX: (314) 588-9605  
Email: [joe.hagerty@oatesassociates.com](mailto:joe.hagerty@oatesassociates.com)  
URL: [www.oatesassociates.com](http://www.oatesassociates.com)

**Other Office:**

820 S. Main Street, Suite 309  
St. Charles, MO 63301  
(636) 493-6277

**Other Offices In: 1 State**

Rep(s): Joseph G. Hagerty, Jeffrey R. Rensing

Activities: Oates Associates is a multi-disciplined planning and design firm offering civil and structural engineering services from concept through construction services. We are familiar with a broad range of scales and project types across several markets. Services include transportation planning, traffic engineering, bridge and building structures, site design, highway and street design, pedestrian accommodations, water resources, survey, and construction phase services.

**Olsson****156 / 1,200**

1301 Burlington Street, Suite 100  
North Kansas City, MO 64116  
(816) 361-1177 FAX: (816) 361-1888  
Email: [rmersch@olsson.com](mailto:rmersch@olsson.com)  
URL: [www.olsson.com](http://www.olsson.com)

**Other Office:**

550 Saint Louis Street  
Springfield, MO 65806  
(417) 890-8802 FAX: (417) 890-8805  
Email: [jforrester@olsson.com](mailto:jforrester@olsson.com)

**Branch Office:**

714 S. Main Street  
Joplin, MO 65801  
(417) 206-9000 FAX: (417) 206-9002  
Email: [ccristy@olsson.com](mailto:ccristy@olsson.com)

**Branch Office:**

1814 Main Street  
Kansas City, MO 64108  
(816) 842-8844  
Email: [jmarcason@olsson.com](mailto:jmarcason@olsson.com)

**Other Offices In: 7 States**

Rep(s): Ron Mersch, Darren Hennen, Clayton Cristy

Activities: Olsson offers comprehensive design solutions for public and private infrastructure projects. We specialize in complex projects that involve many disciplines, including airport consulting, automation and technology, civil engineering, community consulting, construction observation, environmental, GIS, geotechnical investigation, intelligent transportation systems, land development, landscape architecture, mapping, mechanical/electrical/fire protection, power electrical, special inspections, specialty lighting, structural, surveying, traffic, transportation, urban planning and design, water resources, water/wastewater services.

**Palmerton & Parrish, Inc.****39 / 41**

4168 W. Kearney Street  
Springfield, MO 65803  
(417) 864-6000 FAX: (417) 864-6004  
Email: [contact@ppimo.com](mailto:contact@ppimo.com); [brandonp@ppimo.com](mailto:brandonp@ppimo.com); [rachelgoeke@ppimo.com](mailto:rachelgoeke@ppimo.com)  
URL: [www.ppimo.com](http://www.ppimo.com)

**Branch Office:**

10000 W. Highway 160  
Walnut Shade (Branson), MO 65771  
(417) 335-6011

**Branch Office:**

3500 East 13th Street  
Joplin, MO 64801-5827  
(417) 624-2005

**Other Offices In: 1 State**

Rep(s): Brandon R. Parrish, Rachel Goeke, Shane Rader

Activities: PPI is a Civil Engineering Consulting Firm that specializes in Geotechnical Engineering, Subsurface Drilling, Construction Materials Testing, and Environmental Services. PPI's resources include: a highly qualified, full-time staff of nearly 60 employees; 8 drill rigs including numerous ATV-mounted rigs; comprehensive geotechnical and construction materials testing laboratory that are certified by the USACE and AMRL/CCRL (AASHTO); and geophysical survey capabilities including multi-channel analysis of shear waves (MASW) and seismic refraction. Specialty services offered by PPI include a variety of Non-Destructive Testing (NDT) methods, Ground Penetrating Radar (GPR), and vacuum (hydro) excavation. PPI is always looking for opportunities to further expand our core capabilities to better serve our clients. PPI is a Small Business in accordance with SBA guidelines for the NAICS Codes in which we work.

**Parsons****61 / 2,171**

530 Maryville Centre Drive, Suite 400  
St. Louis, MO 63141  
(314) 819-5010

Email: [timothy.broyles@parsons.com](mailto:timothy.broyles@parsons.com)

URL: [www.parsons.com](http://www.parsons.com)

**Other Offices In: 34 States**

Rep(s): T. A. Goodwin, Timothy S. Broyles, Vincent T. Gastoni, Chris W. Watts

Activities: Bridge & Tunnel – Design/build, construction engineering, rehabilitation/reconstruction, value engineering, redesign, modernization, and retrofit for every type/size of fixed and movable bridge. Design and construction of fored and cut-and-cover tunnels. Road & Highway – Planning, design, development, construction for diverse economic, climatic, and geographic conditions of all roadway system types, including toll roads and interchanges. Types of clients include Departments of Transportation, as well as various public and private entities.

**Pitzman's Surveying Group, Inc.****5**

2725-R Sutton Boulevard  
St. Louis, MO 63143  
(314) 781-5665 FAX: (314) 781-1801

Email: [billb@pitzmans.com](mailto:billb@pitzmans.com)

URL: [www.pitzmans.com](http://www.pitzmans.com)

Rep(s): Bill Berthold, Kevin Blest

Activities: Civil improvement surveys, topographic surveys, 3D laser (LiDAR) scans and modeling, construction staking, as-built surveys, easements, subdivision platting, land development: ordinance drafting and review, recording plat drafting and review, utility tracing and locating, and boundary surveys: ALTA/ACSM land title standards, Missouri minimum standards. Types of clients include commercial, education, government, healthcare, industrial, parks and recreation, residential, transportation/infrastructure.

Minority Business Enterprise

**Poepping, Stone, Bach & Assoc., Inc.****3 / 24**

801 Broadway, Suite 248  
P.O. Box 190  
Hannibal, MO 63401-0190  
(573) 406-0541 FAX: (217) 223-4605

Email: [michaelp@psba.com](mailto:michaelp@psba.com)

URL: [www.psba.com](http://www.psba.com)

**Other Offices In: 2 States**

Rep(s): Michael Purol

Activities: Bridge replacement & bridge repair projects including topographic surveys, hydraulics, preparation of preliminary, right-of-way and final construction documents. Bridge evaluation projects including routine, in-depth and fracture critical inspections. Design and detailing of complex and unusual industrial foundations. Seismic retrofit of steel structures. Types of clients include municipalities, counties, State Departments of Transportation, industries.

**Prairie Engineers, P.C.**

1 / 34

8873 Hazelwood Tech Court  
Hazelwood, MO 63042  
(217) 605-0403 FAX: (217) 718-4764  
Email: [lkramer@prairieengineers.com](mailto:lkramer@prairieengineers.com)  
URL: [www.prairieengineers.com](http://www.prairieengineers.com)  
Other Offices In: 2 States  
Rep(s): Lisa Kramer

Activities: Prairie Engineers, P.C. is a full-service engineering and land surveying consulting firm. We have capabilities and experience with planning, project management, civil/site engineering, structural engineering, water resources engineering, transportation engineering, mechanical, electrical, and plumbing engineering, land surveying and geospatial, land acquisition, environmental science and natural resource management, and construction management. Types of clients include federal, state, local government, utilities, and private sector.

**Prost Builders, Inc.**

16

3617 Route CC  
Jefferson City, MO 65109  
(573) 635-0211 FAX: (573) 634-2442  
Email: [vxp@prostbuilders.com](mailto:vxp@prostbuilders.com)  
URL: [www.prostbuilders.com](http://www.prostbuilders.com)  
Rep(s): Vaughn X. Prost

Activities: Structural design of low-rise structures and construction engineering. Limited civil design work. Design of Solar PhotoVoltaic Electrical Systems. Types of clients include developers, governmental, commercial business and homeowners.

**Quigg Engineering Inc.**

10 / 94

720 Olive Street, Suite 1610  
St. Louis, MO 63101  
(314) 339-8431 FAX: (217) 245-5398  
Email: [twelz@quiggengineering.com](mailto:twelz@quiggengineering.com)  
URL: [www.quiggengineering.com](http://www.quiggengineering.com)  
Other Offices In: 5 States  
Rep(s): Todd Welz

Activities: Roadway, bridge, traffic signal, airport, railroad and site design; topographic (both traditional and LiDAR), right of way, utility and construction layout surveys; environmental assessments including biological surveys, wetland delineation, noise studies, and endangered species surveys. Construction inspection of highways, bridges, railroads, and site developments. Types of clients include state DOTs, tollways, counties, municipalities, developers, and contractors.

*Disadvantaged Business Enterprise  
Minority Business Enterprise*

**Reitz & Jens, Inc.**

19

1055 Corporate Square Drive  
St. Louis, MO 63132-2928  
(314) 993-4132 FAX: (314) 993-4177  
Email: [info@reitzjens.com](mailto:info@reitzjens.com)  
URL: [www.reitzjens.com](http://www.reitzjens.com)

Rep(s): Paul H. Reitz, Eric J. Karch, Kyle E. Kocher, Jeffrey D. Bertel  
Activities: Reitz & Jens has provided high quality geotechnical, water resources, environmental, and construction engineering and quality control services for more than 55 years. Geotechnical services include subsurface investigations, foundation design, and slope stability analysis for structures, infrastructure improvements, dams and levees, landfills, power, and transportation facilities. Water resources services include stormwater management and design, flood studies and FEMA permitting, dam and levee evaluation and inland port design. Environmental services include evaluation, restoration, design, and 404 permitting for wetlands, natural streams and river systems, and biostabilization projects. Construction services include field and laboratory QA/QC testing and inspection, structural monitoring systems, constructability analysis, and temporary shoring design for difficult sites. Clients include federal, state, county & Municipal agencies; utility companies; engineers & architects; private industry; contractors & developers.

**Renaissance Infrastructure Consulting**

23 / 54

5015 NW Canal Street, Suite 100  
Riverside, MO 64150  
(816) 800-0950  
Email: [ccorcoran@ric-consult.com](mailto:ccorcoran@ric-consult.com)  
URL: [www.ric-consult.com](http://www.ric-consult.com)  
Other Offices In: 1 State  
Rep(s): Chip Corcoran, Vince Zink

Activities: RIC is a multi-disciplinary consulting firm providing land surveying, civil engineering, landscape architecture, and construction inspection services. Our areas of expertise include water/wastewater, stormwater management, site design and development, transportation, traffic engineering, commercial drone services, landscape architecture and land surveying. Types of clients include Private Developers, Contractors, Architects, Municipalities, School Districts, Federal, State DOTs, professional service companies.

**Ross & Baruzzini, Inc.**

142 / 401

6 South Old Orchard  
Webster Groves, MO 63119  
(314) 918-8383 FAX: (314) 918-1766  
Email: [mshea@rossbar.com](mailto:mshea@rossbar.com)  
URL: [www.rossbar.com](http://www.rossbar.com)  
Other Offices In: 12 States  
Rep(s): Craig Toder, Mike Shea, Jeff Crawford

Activities: Founded in St. Louis in 1953, Ross & Baruzzini is an international technology consulting and engineering firm continually ranked among the top companies in the nation. Earlier in 2019, the firm was cited as a "best place to work" by the St. Louis Business Journal. It is also a recurring Zweig Hot List company for fastest growing design firms in the U.S. Global organizations have retained Ross & Baruzzini, along with divisions Macro, DVS, Mitchell, CAGE, EDI, COMgroup and Genesis, to meet the challenges facing critical industries including Utilities Infrastructure, Government and Public Infrastructure, Mission Critical, Healthcare, Higher Education + Research, Transit and Rail Transportation, Highways and Airports. Ross & Baruzzini employs a comprehensive staff of 400+ MEP/FP engineers, information technology consultants, operations consultants, communications consultants, audio/visual consultants, security consultants, medical equipment planners, intelligent transportation engineers, baggage handling consultants, architects, construction administrators, commissioning agents and support personnel.

**SCI Engineering, Inc.**

78 / 139

130 Point West Boulevard  
St. Charles, MO 63301  
(636) 949-8200 FAX: (636) 949-8269  
Email: [serter@sciengineering.com](mailto:serter@sciengineering.com)  
URL: [www.sciengineering.com](http://www.sciengineering.com)  
Branch Office:  
1372 South Bishop Avenue  
Rolla, MO 65401  
(573) 426-4901 FAX: (573) 426-4853  
Email: [tkreutz@sciengineering.com](mailto:tkreutz@sciengineering.com)

Other Offices In: 3 States

Rep(s): Shawwna Erter, Tony Kreutz, Scott Harding, Trey Coad  
Activities: SCI Engineering, Inc. (SCI) is a multi-discipline professional consulting firm offering services during all phases of projects -- from development and design through final construction. Founded in 1978, SCI has expanded both in service offerings and locations to better meet the needs of its clients. Professional consulting services include Geotechnical, Environmental, Natural and Cultural Resources, and Construction Materials Testing. Our staff of over 150 employees includes geotechnical engineers, geologists, archaeologists, earth scientists, construction experts, and engineering technicians and is recognized by the Federal government as a small corporation.

**SE3, LLC****3 / 36**

8401 EM 350 Highway  
 Kansas City, MO 64133  
 (816) 272-5545 FAX: (816) 817-0747  
 Email: [vstewart@se3.us](mailto:vstewart@se3.us)  
 URL: [www.se3.us](http://www.se3.us)

Other Offices In: 2 States  
 Rep(s): Vernal Stewart

Activities: Roadway design from municipal streets, to interstate highways, including roadway geometry, pavement design, earthwork, drainage, signage, pavement marking, traffic engineering, signal design, ITS, construction phasing and traffic control. Complete Water Infrastructure engineering, including culverts, stormwater detention, watermain, sanitary sewers, green solutions, bio-swales, bio-retention, bio-filtration, rain gardens. Construction Management, including inspection, SWPPP, erosion control, punch list, project closeout. Field Services, including CCTV, smoke testing, dyed water testing. Types of clients include federal, state, county and municipal government agencies, local school districts, and privately-owned businesses and developers.

*Disadvantaged Business Enterprise*

**Shannon & Wilson, Inc.****24 / 315**

2043 Westport Center Drive  
 St. Louis, MO 63146-3564  
 (314) 699-9660 FAX: (314) 699-9661  
 Email: [tja@shanwil.com](mailto:tja@shanwil.com)  
 URL: [www.shannonwilson.com](http://www.shannonwilson.com)

Other Offices In: 10 States

Rep(s): Tom Abkemeier, James Dutt, Monica Zidaru

Activities: Geotechnical and environmental engineering, soil and rock mechanics, engineering geology, hydrogeology, geology, geophysics, earthquake engineering, and foundation engineering as applied to dams, industrial developments, mining & reclamation operations, power plants, structure foundations, harbors, airports and highways, embankments, excavations, water resource evaluation, solid and hazardous waste disposal. Laboratory and field static and dynamic tests, environmental assessment, permitting, assistance, NEPA analysis, wetlands delineation and mitigation, field geophysical surveys, and construction materials testing.

**S.H. Smith & Co., Inc.****40**

901 Vine Street  
 P.O. Box 72  
 Poplar Bluff, MO 63902-0072  
 (573) 785-9621 FAX: (573) 785-2651  
 Email: [steveh@shsmithco.com](mailto:steveh@shsmithco.com)  
 URL: [www.shsmithco.com](http://www.shsmithco.com)

Rep(s): Steve Hicks, William Robison, Robert MacDonald, William Cobb

Activities: Smith & Company is 100% Employee Owned and has been in business since 1968. Smith & Company specializes in civil engineering, surveying, environmental, geotechnical, materials testing and construction inspection for both public and private sectors. Typical projects include water facilities including supply, treatment, distribution and storage; wastewater collection and treatment facilities; streets, highways, and bridges; airports; stormwater drainage; groundwater investigations; site remediation and clean-up; risk-based corrective action plans; and Phase 1 and Phase 2 environmental assessments. Types of clients include federal and state government, municipalities, counties, private developers, contractors, and individuals.

*HUBZONE Small Business*

**Snyder & Associates, Engineers & Planners, LLC****13 / 270**

802 Francis  
 St. Joseph, MO 64501  
 (816) 364-5222 FAX: (816) 364-6086  
 Email: [aemacias@snyder-associates.com](mailto:aemacias@snyder-associates.com)  
 URL: [www.snyder-associates.com](http://www.snyder-associates.com)

Other Offices In: 4 States

Rep(s): Alexander E. Macias

Activities: Snyder & Associates provides civil engineering and planning services, specializing in bridge design, water / wastewater design, site planning, transportation design and construction services for communities, counties and state governments, as well as private clients.

**Solutions AEC, LLC****26 / 40**

12970 Maurer Industrial Drive, Suite 200  
 St. Louis, MO 63127  
 (314) 966-6299  
 Email: [mspencer@solutions-aec.com](mailto:mspencer@solutions-aec.com)  
 URL: [www.solutions-aec.com](http://www.solutions-aec.com)

Other Offices In: 1 State

Rep(s): Matthew Spencer

Activities: Solutions AEC is a provider of integrated Design Build and Engineering services. We specialize in providing turnkey MEP systems for complex buildings and facilities. Types of clients include architects, general contractors, owner/operators. Types of clients include architects, general contractors, and owner/operators.

*Certified Small Business*

**SSE, Inc.****8**

138 West Clinton  
 St. Louis, MO 63122-5810  
 (314) 965-2233 FAX: (314) 965-8269  
 URL: [www.ssestructural.com](http://www.ssestructural.com)

Rep(s): Timothy R. Unger, Charlie Lu

Activities: Structural engineering services to architects, owners, and developers in the commercial, multifamily residential, educational, industrial and institutional fields. Services include design of buildings, parking structures, special structures, feasibility studies and forensic engineering. Parking garage and plaza deck restoration consulting services, including condition assessment, restoration implementation and maintenance.

**Stantec****15 / 22,000**

1859 Bowles Avenue, Suite 250  
 St. Louis, MO 63026  
 (636) 343-3880 FAX: (636) 343-3554  
 Email: [bob.welsch@stantec.com](mailto:bob.welsch@stantec.com)  
 URL: [www.stantec.com](http://www.stantec.com)

Other Offices In: 45 States

Rep(s): Bob Welsch, Jason Schneider

Activities: Stantec provides professional consulting services in planning, engineering, architecture, interior design, landscape architecture, surveying, environmental sciences, project management, and project economics for infrastructure and facilities projects. We support public and private sector clients in a diverse range of markets, at every stage, from initial concept and financial feasibility to project completion and beyond. Our services are offered through over 22,000 employees operating out of more than 400 locations across 6 continents.

**Stock & Associates Consulting Engineers, Inc.****28**

257 Chesterfield Business Parkway  
 Chesterfield, MO 63005  
 (636) 530-9100 FAX: (636) 530-9122  
 Email: [dan.stock@stockassoc.com](mailto:dan.stock@stockassoc.com)  
 URL: [www.stockassoc.com](http://www.stockassoc.com)

Rep(s): Dan Stock

Activities: Experience with numerous types of healthcare, institutional users, retail, commercial / industrial type projects. Project work has consisted of site selection and evaluation, preliminary design, final design and permitting as it relates to zoning regulations, rezoning, development, preliminary site layouts, final designs and plan preparation of storm and sanitary sewers, site grading, utilities, paving and roadways. Types of clients include general contractors, architects, government and municipal.

## Strickland Engineering, L.C.

113 W. Main Street, Suite 1

Jackson, MO 63755

(573) 243-4080 FAX: (573) 243-2191

Email: [mstrick@stricklandengineering.com](mailto:mstrick@stricklandengineering.com)

URL: [www.stricklandengineering.com](http://www.stricklandengineering.com)

Rep(s): Mark D. Strickland, Thomas H. Strickland, Brian W. Strickland

Activities: Mechanical, electrical, and civil design for new building construction and building renovations. Studies and designs for energy conservation projects. Public works projects including street, water distribution, wastewater collection and treatment, and storm-water management. Civil engineering and land surveying for land development. Industrial controls and systems integration. Clients include commercial, industrial, governmental agencies and institutional agencies.

## Taliaferro & Browne, Inc.

1020 E. 8th Street

Kansas City, MO 64106

(816) 283-3456 FAX: (816) 283-0810

Email: [lgraham@tb-engr.com](mailto:lgraham@tb-engr.com)

URL: [www.tb-engr.com](http://www.tb-engr.com)

Branch Office:

906 Olive Street, Suite 225

St. Louis, MO 63101-1452

(314) 588-0456 FAX: (314) 588-0234

Rep(s): Leonard J. Graham, Hagos E. Andebrhan, Nicki Chestnut, Lamin Nyang

Activities: General civil and structural engineering, landscape architecture, architecture and surveying for public works and site development projects. Street design, storm and sanitary sewers, waterlines, pump stations, site development, grading, bridges, and culverts. Land surveying, platting, landscape architecture and site planning. Types of clients include Federal, State, County & Municipal Government, Private Developers, and other consulting firms.

*Disadvantaged Business Enterprise*

*Minority Business Enterprise*

## Tepa Engineering Services

1600 Genessee Street, Suite 729

Kansas City, MO 64102

(314) 944-6376

Email: [brad.loomis@tepa.com](mailto:brad.loomis@tepa.com)

URL: [www.tepa.com](http://www.tepa.com)

Other Offices In: 4 States

Rep(s): Brad Loomis

Activities: Tepa Engineering Services is a full-service Architectural and Engineering design firm with staff experienced in civil, structural, mechanical, electrical, and industrial engineering. Our services also include architectural design and master planning. Types of clients include Federal (Department of Defense and Government), Industry, Commercial, Development, State, Local and Municipal Governments.

## Terracon Consultants, Inc.

1160 Lilburn Park Road

St. Louis, MO 63146

(314) 692-8811 FAX: (314) 692-8810

Email: [brporter@terracon.com](mailto:brporter@terracon.com)

URL: [www.terracon.com](http://www.terracon.com)

Branch Office:

6700 Stephens Station Road, Suite 101

Columbia, MO 65202

(573) 214-2677 FAX: (573) 214-2714

Email: [jeff.kenney@terracon.com](mailto:jeff.kenney@terracon.com)

15

Branch Office:

1312 SW Market Street

Lee's Summit, MO 64081

(913) 998-7391 FAX: (816) 525-6704

Email: [cjwilson@terracon.com](mailto:cjwilson@terracon.com)

Branch Office:

508 E. 9th Street

Joplin, MO 64801

(417) 659-6083 FAX: (417) 659-8011

Email: [tgalexander@terracon.com](mailto:tgalexander@terracon.com)

Branch Office:

4765 W. Junction Street

Springfield, MO 64802

(417) 864-5700 FAX: (417) 864-0871

Email: [tgalexander@terracon.com](mailto:tgalexander@terracon.com)

Branch Office:

405 Schofer Street, Building 3

Rolla, MO 65401

(573) 612-7200 FAX: (573) 612-7201

Other Offices In: 39 States

Rep(s): Brian Porter, Cale Wilson, Ty Alexander

Activities: Geotechnical, environmental, construction materials testing and related engineering services for commercial, public, and government clients.

61

## Tetra Tech, Inc.

55 / 16,000

938 South Highway Drive

Fenton, MO 63026

(636) 326-6772 FAX: (636) 326-6790

Email: [lance.nelson@tetrattech.com](mailto:lance.nelson@tetrattech.com)

URL: [www.tetrattech.com](http://www.tetrattech.com)

Branch Office:

415 Oak Street

Kansas City, MO 64106

(816) 412-1741 FAX: (816) 410-1748

Other Offices In: 47 States

Rep(s): John Brummer, Lance Nelson

Activities: Tetra Tech is a leading provider of consulting, engineering, and technical services worldwide. We are a diverse company, including individuals with expertise in science, research, engineering, construction, and information technology. Our strength is in collectively providing integrated services - delivering the best solutions to meet our clients' needs. Tetra Tech's innovative, sustainable solutions help our clients address their water, environment, energy, infrastructure, and resource management challenges. We are proud to be home to leading technical experts in every sector and to use that expertise throughout the project life cycle. Our commitment to safety is ingrained in our culture and at the forefront of every project. Global services include consulting and engineering for a broad range of infrastructure, resource management and energy needs including water and wastewater, environmental, military, ports and harbors, communications, oil and gas, energy, mining, remediation, utilities, waste management, and international development.

## Texas Design Concepts, Inc. (dba TDC Structural Engineers)

2

3906 Zambezi Drive

Columbia, MO 65202-6266

(573) 303-9169

Email: [kris@tdconcepts.com](mailto:kris@tdconcepts.com)

URL: [www.tdconcepts.com](http://www.tdconcepts.com)

Rep(s): Kris Bezenek

Activities: Structural engineering design and evaluation of vertical structures. Around 75% of our volume is considered "specialty structural engineering" dealing with prestressed and precast concrete, cold-formed steel, and/or forensics-related work. Types of clients include material producers and manufacturers, contractors, private owners/managers, architects.

**Thompson Civil, LLC****3 / 5**

906 Olive Street, Suite 902

St. Louis, MO 63101

(314) 724-3127

Email: [lorenzo.thompson@tcivil.com](mailto:lorenzo.thompson@tcivil.com)URL: [www.tcivil.com](http://www.tcivil.com)

Other Offices In: 1 State

Rep(s): Lorenzo Thompson

Activities: Civil Engineering firm with an emphasis in Highway Engineering, Site Design, and Construction Management. Our experience includes civil roadway geometric design, drainage design, pavement design (destructive and non-destructive), traffic control, erosion control, and related transportation engineering tasks from preliminary studies through final design documents and specifications for construction. Thompson Civil also has experience in storm water management and sanitary sewer design. Types of clients include Government (State, County & Municipal) and Private Clients.

*Disadvantaged Business Enterprise**Minority Business Enterprise***Thompson Design Consultants, P.C.****2**

1600 Genessee, Suite 910

Kansas City, MO 64102

(816) 421-5485 FAX: (816) 221-8972

Email: [wthompson@thompsondesignconsultants.com](mailto:wthompson@thompsondesignconsultants.com)

Rep(s): H. Wayne Thompson, Jr.

Activities: Mechanical and electrical services for commercial and multifamily residential structures, including building systems, financial analyses, feasibility studies, system deficiency studies, property condition assessments, plan reviews, and design/build documents. Clients include property managers, building owners, public entities and architects.

**Thouvenot, Wade & Moerchen, Inc.****10 / 70**

720 Olive Street, Suite 200A

St. Louis, MO 63101

(314) 241-6300 FAX: (314) 241-2391

Email: [jldeck@twm-inc.com](mailto:jldeck@twm-inc.com)URL: [www.twm-inc.com](http://www.twm-inc.com)

Branch Office:

400 North 5th Street, Suite 101

St. Charles, MO 63301

(636) 724-8300 FAX: (636) 724-8304

Branch Office:

3316 Lemone Industrial Boulevard, Suite 2

Columbia, MO 65201

(573) 442-6474

Other Offices In: 1 State

Rep(s): J.R. Landeck, Craig Brauer

Activities: TWM provides professional services for projects related to transportation engineering for roadways, traffic, sidewalks, trails, and railway; structural engineering for bridges, retaining walls, large structures, and buildings; water and wastewater engineering for water mains, water towers, wastewater treatment plants, lift stations, sanitary systems, and storm sewers; and site civil design for recreational, medical, educational, commercial, and residential developments. We also offer geospatial services including traditional land surveying, 3D scanning, GIS, and mapping as well as construction observation and sewer video/testing services. We serve clients in the public and private sector, ranging from municipalities to state DOTs to private developers.

**TranSystems Corporation****233 / 1,269**

2400 Pershing Road, Suite 400

Kansas City, MO 64108

(816) 329-8600 FAX: (816) 329-8601

Email: [marketing@transystems.com](mailto:marketing@transystems.com)URL: [www.transystems.com](http://www.transystems.com)

Branch Office:

727 N. 1st Street, Suite 610

St. Louis, MO 63102

(314) 296-6765 FAX: (314) 241-5164

Branch Office:

1027 S. Main Street, Suite 309

Joplin, MO 64801

(800) 800-5261

Other Offices In: 20 States

Rep(s): Frank Weatherford, Paul J. Malir, Sara Clark, Bob Miller, Barb Frost

Activities: TranSystems provides a single source for integrated transportation solutions to a wide range of both public and private-sector clients. Our professionals perform feasibility studies, planning, civil, structural and industrial engineering, architectural services, environmental analysis, as well as project management, construction management and other support services. Our clients include Airport Authorities; State Departments of Transportation; Toll Road Authorities; Municipal and County Governments; Railroad Companies; Port Authorities; Pipeline Companies; Telecommunications Providers; Trucking Companies; Retailers and Wholesale Distributors; Transit Authorities; and the Federal Government.

**TREKK Design Group, LLC****113 / 129**

1441 E. 104th

Kansas City, MO 64131

(816) 874-4655 FAX: (816) 874-4675

Email: [krobinett@trekklc.com](mailto:krobinett@trekklc.com)URL: [www.trekdesigngroup.com](http://www.trekdesigngroup.com)

Branch Office:

2313 C Industrial Drive

Columbia, MO 65202

(660) 346-9084 FAX: (816) 874-4665

Branch Office:

2137 W. Kingsley, Suite B

Springfield, MO 65807

(417) 890-9465

Branch Office:

17 Cassens Court

Fenton, MO 63026

(314) 932-1226

Other Offices In: 3 States

Rep(s): Kimberly Robinett, Trent Robinett

Activities: We are full service civil engineering firm. We provide traffic, transportation and water/wastewater engineering. We also provide survey, GIS services, construction inspection, combined and sanitary sewer investigations services and cleaning and televising of sanitary and storm sewer lines. Clients include state, municipal, county, consulting engineering firms, and private sector.

*Disadvantaged Business Enterprise**Women Business Enterprise***Vecino Design, LLC****36 / 65**

305 West Commercial Street

Springfield, MO 65803-2667

(417) 720-1577

Email: [walter@VecinoGroup.com](mailto:walter@VecinoGroup.com)URL: [www.VecinoGroup.com](http://www.VecinoGroup.com)

Other Offices In: 3 States

Rep(s): Walter Warren

Activities: Architecture, engineering and interior design for affordable housing, student housing and public/private partnerships.

**Veenstra & Kimm, Inc.****7 / 130**

1201 West College, Suite 100

P.O. Box 236

Liberty, MO 64069-0236

(816) 781-6182 FAX: (816) 781-0643

Email: [dmcDonald@v-k.net](mailto:dmcDonald@v-k.net)URL: [www.v-k.net](http://www.v-k.net)



Other Offices In: 3 States

Rep(s): David H. McDonald, Roger E. Waltemath

Activities: Offers professional services in the field of civil, structural and environmental engineering to cities, counties, state and federal agencies, railroads and private clients. Provides design services for streets and highways; bridge design, analysis, inspections and rehabilitation; transportation facilities; foundations design and studies; hydrology and hydraulic studies and analysis; sanitary sewers; flood insurance studies and flood control; stormwater management and planning; wastewater facility planning and treatment facilities; water planning and storage facilities; water supply and treatment facilities.

### **Volkert, Inc.**

**10 / 800**

333 S. 18th Street, Suite 210

St. Louis, MO 63103

(314) 925-7326

Email: [teresa.mcclure@volkert.com](mailto:teresa.mcclure@volkert.com)

URL: [www.volkert.com](http://www.volkert.com)

Other Offices In: 11 States

Rep(s): Teresa McClure, Jason Watters, David Holloway

Activities: Volkert continues to be ranked as one of the top engineering, architectural, planning, real estate acquisition and environmental consulting firms in the U.S. Volkert has completed CEI for roadway and airports projects and utility projects. Volkert also has completed environmental impact statements and roadway expansion projects. Types of clients include public and private.

### **Walter P Moore**

**41 / 680**

1100 Walnut Street, Suite 1825

Kansas City, MO 64106

(816) 701-2100

Email: [cgreenlief@walterpmoore.com](mailto:cgreenlief@walterpmoore.com)

URL: [www.walterpmoore.com](http://www.walterpmoore.com)

Other Offices In: 10 States

Rep(s): David Landis, Daniel Brown, Cliff Greenlief, David T. Ford

Activities: Walter P Moore is an international company of engineers, architects, innovators, and creative people who solve some of the world's most complex structural and infrastructure challenges. Providing structural, diagnostics, civil, traffic, parking, transportation, enclosure, and construction engineering services, we design solutions that are cost- and resource-efficient, forward-thinking, and help support and shape communities worldwide. Founded in 1931, our 600+ professionals work across 19 U.S. offices and five international locations.

### **Waters Engineering, Inc.**

**10**

P.O. Box 567

Sikeston, MO 63801-0567

(573) 471-5680 FAX: (573) 471-5689

URL: [www.waterseng.com](http://www.waterseng.com)

Rep(s): John Chittenden

Activities: Planning, design and construction phase services for water, wastewater, roadway, bridge and drainage projects. Types of clients include city and county governments and public water districts.

### **Wilson & Company, Inc., Engineers & Architects**

**62 / 466**

800 E. 101st Terrace, Suite 200

Kansas City, MO 64131

(816) 701-3100 FAX: (816) 942-3013

Email: [Nick.Thomas@wilsonco.com](mailto:Nick.Thomas@wilsonco.com)

URL: [www.wilsonco.com](http://www.wilsonco.com)

Other Offices In: 9 States

Rep(s): Justin Klaudt, Jim Townsend, Nicholas Thomas, William Knight, Derek Smith

Activities: Wilson & Company was founded in 1932. The firm employs of over 450 professionals throughout 14 offices in 9 states. Wilson & Company's breadth of capabilities include civil, mechanical, electrical and structural engineers; architects; planners; biologists;

surveyors; mappers; GIS specialists; financial analysts; program and construction managers; and construction inspectors. The firm provides services to a diverse client base including federal and municipal governments, public transportation agencies, railroad companies, industrial and commercial corporations, private developers, institutional, primary and secondary education, healthcare, and renewable energy companies.

### **Wood Environment & Infrastructure Solutions, Inc.**

**70 / 8,200**

15933 Clayton Road, Suite 215

Ballwin, MO 63011

(636) 200-5100 FAX: (636) 402-3005

URL: [www.woodplc.com](http://www.woodplc.com)

Branch Office:

212 E. McCarty Street

Jefferson City, MO 65101

(573) 301-6084 FAX: (573) 636-4966

Other Offices In: 37 States

Rep(s): Stephen Stumne, Dave Hasty, Jennifer Schneider

Activities: Wood is a multi-disciplinary consulting firm with offices worldwide. Offices in Missouri are located in St. Louis and Jefferson City. Services Wood provides include engineering, stormwater management, green infrastructure design standards / ordinances, surveying, geotechnical engineering, environmental consulting (including NEPA services), cultural/natural resource investigations, environmental audits/compliance, construction management and inspection, and hazardous waste management. Areas of expertise include water and wastewater studies and design, hydrogeology, transportation planning and engineering, land development. Types of clients: municipalities, federal government, private sector.

### **Woolpert, Inc.**

**4 / 743**

3636 South Geyer Road, Suite 100

St. Louis, MO 63127

(314) 436-0865 FAX: (314) 471-0664

Email: [dave.dillow@woolpert.com](mailto:dave.dillow@woolpert.com); [bret.paden@woolpert.com](mailto:bret.paden@woolpert.com)

URL: [www.woolpert.com](http://www.woolpert.com)

Other Offices In: 14 States

Rep(s): Bret Paden, Dave Dillow

Activities: Woolpert is a multidisciplinary engineering, architectural and planning firm. The firm provides a broad range of services to governmental and private clients. Areas of expertise include architecture, planning, MEP, water resources, geographic information services, survey and site development.

### **WSP USA Inc.**

**130 / 7,500**

211 N. Broadway, Suite 2800

St. Louis, MO 63102

(314) 206-4444 FAX: (314) 421-1741

Email: [eeo@wsp.com](mailto:eeo@wsp.com)

URL: [www.wsp.com](http://www.wsp.com)

Other Offices In: 44 States

Rep(s): Dan DeArmond, Will Krussel, David Hetlage, Jennifer Kuchinski

Activities: Complete engineering, architectural, and planning services. Feasibility studies, reports, designs, plans, specifications, estimating, construction management, supervision, value engineering. International consultants to governmental, industrial and commercial clients. Provide civil, structural, mechanical, electrical, chemical, sanitary and environmental engineering; architecture and interior design for commercial, industrial, educational, recreational and other facilities; comprehensive city, regional and recreational planning; landscape architecture and urban design.

# LISTING OF ASSOCIATE MEMBERS

## **ACEC Business Insurance Trust 7**

### **Greyling Insurance Brokerage, a division of EPIC**

3780 Mansell Road, Suite 370

Atlanta, GA 30022

(833) 223-2248 FAX: (866) 550-4082

Email: [Jeff.Connelly@greyling.com](mailto:Jeff.Connelly@greyling.com)

URL: [www.acecbit.org](http://www.acecbit.org); [www.greyling.com](http://www.greyling.com)

Program Manager: Jeff Connelly

Services: Greyling Insurance Brokerage, a division of EPIC (Greyling) is the endorsed broker for the ACEC Business Insurance Trust (BIT). Greyling is a specialty insurance broker and risk consultant dedicated to serving the design and construction industries. Greyling has experienced veterans of the insurance industry, design industry and legal profession which results in taking a multi-focal view of risk to develop risk management and insurance solutions for firms of all sizes. This includes access not only to the ACEC BIT's customized Business Insurance Program that economically fits the needs of most member firms, but also access to the most sophisticated insurance markets in the world for large ACEC member firms with complex risk exposures.

## **ACEC Life/Health Insurance Trust 15**

2600 Network Boulevard, Suite 230

Frisco, TX 75034

(469) 200-4583 FAX: (469) 212-1372

Toll Free: (844) 259-0325

Email: [info@aceclifehealthtrust.com](mailto:info@aceclifehealthtrust.com)

URL: [www.aceclifehealthtrust.com](http://www.aceclifehealthtrust.com)

Main Contact: John Krebsbach

Services: The ACEC Life/Health Trust provides healthcare benefit solutions and services to support the business objectives of ACEC member firms and the health and well-being of their employees and families.

## **Anders CPAs + Advisors 240**

800 Market Street, Suite 500

St. Louis, MO 63101

(314) 655-5500 FAX: (314) 655-5501

Email: [bkaniecki@anderscpa.com](mailto:bkaniecki@anderscpa.com)

URL: [www.anderscpa.com](http://www.anderscpa.com)

Main Contact: Brent Kaniecki

Services: With 240 partners and staff and revenues of \$43.5 million, Anders is one of the largest accounting and advisory firms in the Midwest. Anders is #100 on the 2021 Top 100 List by Accounting Today, names one of 2021 America's Best Tax and Accounting Firms by Forbes and will soon appear in a segment on "The World's Greatest" on the ION channel. Anders is a member of LEA Global, the 2nd largest international accounting association.

## **Armanino LLP 327**

1520 S. Fifth Street, Suite 309

St. Charles, MO 63303

(636) 255-3000

Email: [Anne.Ritter@armaninoLLP.com](mailto:Anne.Ritter@armaninoLLP.com)

URL: [www.armaninoLLP.com](http://www.armaninoLLP.com)

Main Contact: Anne Ritter

Services: Armanino – an independent firm associated with Moore Global Network Limited – is a nationally recognized, top 100, full-service CPA and business advisory firm in Missouri with more than 300 employees. The firm serves its long-term base of family owned, private companies with audit, accounting and tax services as well as a wide variety of business consulting services.

## **Delta Companies Inc. 200**

114 S. Silver Springs Road

Cape Girardeau, MO 63703-5063

(573) 334-5261 FAX: (573) 986-9511

Email: [drosenbarger@deltacos.com](mailto:drosenbarger@deltacos.com)

URL: [www.deltacos.com](http://www.deltacos.com)

Other Offices In: 2 States

Main Contact: Donald Rosenbarger

Services: Delta Companies Inc. is a site development and highway contractor specializing in asphalt paving and road construction materials. It operates throughout southeast Missouri, northeast Arkansas, and southern Illinois.

## **Hinkle Law Firm, LLC 115**

8711 Penrose Lane, Suite 400

Lenexa, KS 66219-8197

(913) 549-1105 FAX: (913) 345-4832

Email: [mmcfarland@hinklaw.com](mailto:mmcfarland@hinklaw.com)

URL: [www.hinklaw.com](http://www.hinklaw.com)

Main Contact: Mark E. McFarland

Services: Law firm representing engineers and other design professionals on a wide array of legal challenges arising before, during and after project completion.

## **Holmes Murphy & Associates 74 / 1,000**

1828 Walnut Street, Suite 701

Kansas City, MO 64108

(816) 857-7800 FAX: (866) 574-6282

Email: [nmaletta@holmesmurphy.com](mailto:nmaletta@holmesmurphy.com)

URL: [www.holmesmurphy.com](http://www.holmesmurphy.com)

Other Offices In: 16 States

Main Contact: Nick Maletta

Services: Independent insurance broker providing professional liability, property and casualty, workers' compensation and other business liability protection to meet your needs. Our services include helping A/E's manage their risk and control their losses through education and contract review.

## **Lockton Companies, Inc. 1,000**

444 W. 47th Street, Suite 900

Kansas City, MO 64112-1906

(816) 960-9000 FAX: (816) 960-9099

Email: [sfillmore@lockton.com](mailto:sfillmore@lockton.com)

URL: [www.lockton.com](http://www.lockton.com)

Other Offices In: 21 States

Main Contact: Scott Fillmore

Services: Lockton Companies is a leading provider of insurance, surety bond, risk management and employee benefit services to the engineering and architectural professions. Lockton's Design and Construction Practice develops practice program and project specific solutions for firms performing on projects in over sixty countries. Lockton provides experienced contract and practice management support and programs.

## **Missouri Asphalt Pavement Association 4**

1221 Jefferson Street

Jefferson City, MO 65109

(573) 635-6071 FAX: (573) 635-6134

Email: [dalewilliams@moasphalt.org](mailto:dalewilliams@moasphalt.org)

URL: [www.moasphalt.org](http://www.moasphalt.org)

Main Contact: Dale Williams

Services: MAPA works to ensure our members are committed to the quality of construction and work with the Missouri Highway and Transportation Department, counties, cities, towns, and developers to aid in developing and maintaining quality specifications. We accomplish this by providing technical support and hosting educational seminars regarding the asphalt industry.

**N.B. West Contracting Company, Inc. 150**

18637 US Route 66  
Pacific, MO 63069  
(314) 962-3145  
Email: [sjackson@nbwest.com](mailto:sjackson@nbwest.com)  
URL: [www.nbwest.com](http://www.nbwest.com)

Main Contact: Steve Jackson

Services: West Contracting is an asphalt paving and concrete construction company. We are a general contractor and do not offer any engineering design work.

**Ollis/Akers/Arney Insurance & Business Advisors 62**

2274 E. Sunshine  
Springfield, MO 65804  
(417) 881-8333 FAX: (417) 823-7444  
Email: [Mindy.Pippin@ollisaa.com](mailto:Mindy.Pippin@ollisaa.com)  
URL: [www.OllisAkersArney.com](http://www.OllisAkersArney.com)

Main Contact: Mindy Pippin

Services: We are a full-service business consulting firm specializing in risk management. Our agency offers solutions in property & casualty insurance, group health benefits, medicate, wellness initiatives and HR consulting. Our team of experts use a proprietary documented process to measure results and enhance communications with stakeholders.

**R&K Excavation, Inc. 45**

10170 State Route OO  
Bloomsdale, MO 63627  
(573) 776-8736  
Email: [sschultz@rkexc.com](mailto:sschultz@rkexc.com)  
URL: [www.rkexc.com](http://www.rkexc.com)

Main Contact: Stan Schultz

Services: Emphasis areas include turf athletic fields in the Midwest, soil stabilization and general excavation for highways, levees, and private development. Very experienced with drone surveying and building/using machine control models on large excavation projects.

**RubinBrown, LLP 700**

7676 Forsyth Boulevard, Suite 2100  
St. Louis, MO 63105  
(314) 290-3300 FAX: (314) 290-3400  
Email: [info@rubinbrown.com](mailto:info@rubinbrown.com)  
URL: [www.rubinbrown.com](http://www.rubinbrown.com)

Other Office:

1200 Main Street, Suite 1000  
Kansas City, MO 64105  
(816) 472-1122

Other Offices In: 4 States

Main Contact: Mark Jansen

Services: Independent accounting and business consulting firm with offices in St. Louis, Kansas City and Denver.

**Seiler Instrument Company**

200

3433 Tree Court Industrial Boulevard  
St. Louis, MO 63122  
(314) 968-2282 FAX: (314) 218-6139  
Email: [solutions@seilerinst.com](mailto:solutions@seilerinst.com)  
URL: [www.seilegeo.com](http://www.seilegeo.com)

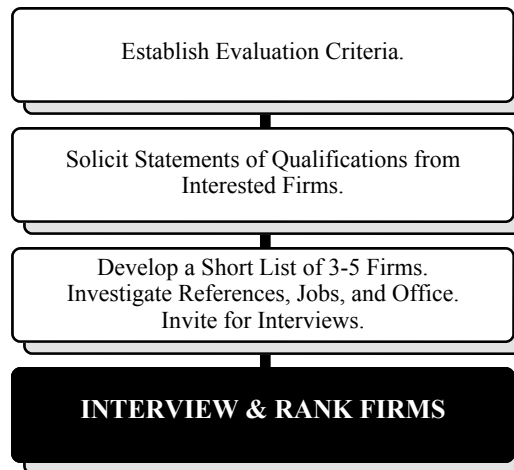
Main Contact: Tom Seiler

Services: Since 1945, Seiler has provided premier surveying/geospatial products and solutions to our clients. Our experienced staff are industry professionals that guide, support, and educate clients with leading hardware & software productivity solutions. Seiler carries top line products for survey, mapping, 3D scanning and mobile mapping, drones, project management software and so much more. Please email us for a demonstration or questions at [geosolutions@seilerinst.com](mailto:geosolutions@seilerinst.com) or website [www.seilegeo.com/](http://www.seilegeo.com/).

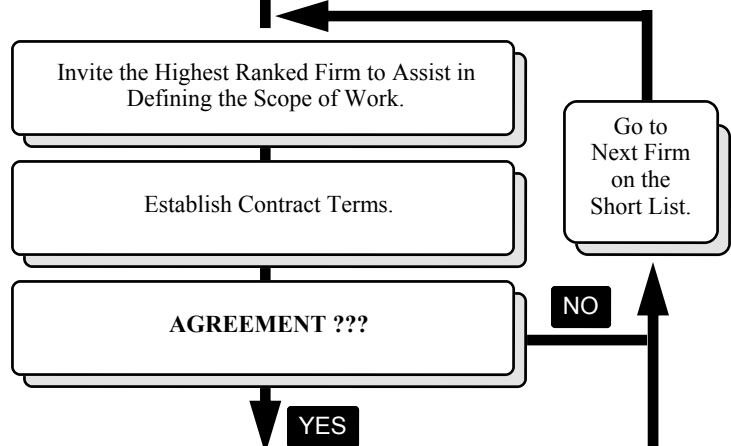
# QBS - The 3-Step Process

## Qualifications Based Selection Process — Easy as One, Two, Three

**STEP 1**  
Select the best  
Qualified firm.



**STEP 2**  
Jointly define scope  
and contract terms,  
taking advantage of  
the experience of the  
selected firm.



**STEP 3**  
Retain the firm  
on the basis of  
an acceptable  
proposal.

