

ACEC *Excellence* ENGINEERING Missouri AWARDS

2026
**CALL FOR
ENTRIES**



Building/Technology Systems
Energy
Environmental
Industrial & Manufacturing Processes
Small Projects
Special Projects



CATEGORIES



Structural Systems
Studies, Research & Cons. Eng.
Surveying & Mapping Technology
Transportation
Waste & Storm Water
Water Resources

**EEA Deadline:
October 22, 2025**

DATES TO REMEMBER

October 22, 2025

ACEC/MO EEA Project Entry Deadline

November 14, 2025

ACEC/MO EEA Judging

January 7, 2026

ACEC National EEA Project Entry Deadline

February 20-22, 2026

ACEC National EEA Judging in Chantilly, VA

March 5, 2026

ACEC/MO Awards Banquet in St. Louis

May 5, 2026

ACEC National EEA Presentations and Gala Awards Program in Washington, D.C.



RATING GUIDELINES & DEFINITIONS

Each entrant's contribution will be evaluated based on the following five categories, which are key elements of the project description text required in the electronic submittal.

1. Uniqueness and/or Innovative Applications of New or Existing Techniques

- Include as many measurable results as possible to tell the story of the project. For example, data points related to energy savings, number of people impacted by the project, etc.
- Does the entrant's contribution to the project demonstrate the use of a new science or a breakthrough in the general knowledge of engineering?
- Does the entrant's contribution to the project represent a unique application of new or existing technology, techniques, materials, or equipment?

2. Future Value to the Engineering Profession and Enhanced Public Awareness/Enthusiasm of the Role of Engineering

- Will the entrant's contribution to the project redefine current engineering thinking?
- Does the entrant's project increase public awareness / enthusiasm about the role of engineering in their everyday lives?

3. Social, Economic, and Sustainable Development Considerations

- Do the solutions identified produce secondary benefits of value to the community/environment?
- Does the entrant's approach provide society with social, economic, or sustainable development benefits?
- Does the entrant's contribution to the project improve the health, safety, or welfare of the public or affected environment?

4. Complexity

- Did the entrant's efforts successfully address highly complex criteria or unique problems?
- Were extraordinary problems of site, location, hazardous conditions, project requirements or similar elements present?
- Did the entrant's solutions require the use of out-of-the-ordinary technology or ingenuity for achievement of the projects' goals?

5. Successful Fulfillment of Client/Owner Needs

- Did the entrant successfully engage the client/owner in the overall project development process?
- Did the entrant introduce an economical and cost-effective solution?
- How did final cost compare to the original budget estimate?
- How closely does the entrant's solution meet the total goals of the client/owner?
- Did the entrant meet the client's time schedule?





ACEC/MO 2026 EEA RULES

ELIGIBILITY

Any engineering or surveying firm is eligible to enter the awards program, whether or not the firm is a member of ACEC/MO.

GENERAL CRITERIA

- 1 Entries submitted to the ACEC/MO competition must be submitted in accordance with the rules and requirements in this brochure.
- 2 Engineering or surveying projects that have won awards in other state programs are welcome to be entered.
- 3 Projects entered in the competition may have been executed anywhere in the world. **Studies and Research (Category A) or Surveying and Mapping projects (Category D) must have been publicly disclosed by the client between Nov. 1, 2023 and Oct. 31, 2025. Construction of projects (Categories B through L – with the exception of D) must have been ready for use between Nov. 1, 2023 and Oct. 31, 2025.**
- 4 Entries may be placed in any one of the 12 categories. See “Project Categories” section for the full listing of all eligible categories. The entering firm must select the one category that is most appropriate. As an entrant, it is important to note that projects are not ultimately judged by category. A project may be entered only once by the entering firm in any category. The same project may be entered in a different category by a different entering firm. However, after a project entered in Category A, and the project has been constructed, the project may be entered by the same firm in a different category – B through L – in the year when eligible.
- 5 Each entry must consist of two components:
 - Official Electronic Entry Submission
 - Entry Fee (\$450 - members; \$1,200 - non-members).

Non-compliance with the rules may disqualify an entry. Please read the requirements thoroughly.
- 6 ACEC/MO will not be responsible for any damage or loss to entrant’s official electronic entry.
- 7 The ACEC/MO Engineering Excellence Awards Committee and judges reserve the right to determine, and change if necessary, the eligibility and category classification of any entry.

JUDGING & AFTER JUDGING

Entries will be judged on the basis of:

- Overall engineering excellence
- The work performed by the submitting firm only
- The rating guidelines listed.

1. **No more than three (3) awards** may be received by any one firm.
2. A **judging panel** will be picked by the Committee. Judges will not be associated with ACEC/MO firms.
3. All winners will be notified immediately after judging.
4. A project panel, meeting ACEC/MO requirements, will be required for the Awards Banquet.
5. The panels will be transported to the Awards Banquet, scheduled for **March 5, 2026**, for viewing by engineering firm representatives, clients and media at a **Special Reception** before the Banquet.
6. After **State Competition**:
 - Grand Conceptor and Grand Award winners have the option of submitting to ACEC national competition. The deadline to submit to the ACEC national competition is January 7, 2026.

AWARDS

The panel of judges will grant a Grand Conceptor Award, Grand Awards, a Small Firm Award and Honor Awards. The Grand Conceptor may come from any of the 12 categories and will be presented as the top winner selected by the judges, whose decisions on all awards are final. Awards will be presented to the clients/owners and entering firms submitting the winning entries. All award winners will be recognized and will be highlighted during the Engineering Excellence Awards Banquet.

Award Categories:

GRAND CONCEPTOR AWARD will be given to the best Grand Award candidate project entry as determined by the judges.

GRAND AWARD for each category where a project or projects are entered. Each project has to earn a minimum score of 70 to be considered for a Grand Award.

SMALL FIRM AWARD will be given to the highest scoring project entry from a firm whose home office has **20 or fewer employees** not receiving another award. Project must earn the minimum score of 70.

PROJECT CATEGORIES

CATEGORY A:

Studies, Research and Consulting Engineering Services

Non-design services, projects not involving the preparation of construction documents consisting of but not limited to the following types of projects:

- New products, materials and technologies
- Expert testimony
- Basic research and studies
- Computer/software technology
- Technical papers
- Public outreach/involvement
- Water conservation
- Security plans
- Project feasibility studies/economic/risk
- Value engineering

CATEGORY B:

Building/Technology Systems

- Mechanical/electrical/plumbing
- Computer/technology
- Communications
- Acoustics
- Software systems
- Sustainability or carbon neutrality
- Efficiency certification standards, e.g. LEED
- Energy efficiency - new and retrofit
- Secure facilities (military/research/correctional)

CATEGORY C:

Structural Systems

- Foundations
- Tunnels
- Buildings
- Seismic design
- Towers
- Bridges
- Stadiums

CATEGORY D:

Surveying and Mapping Technology

- Geometrics, ALTA, land title and rights surveys
- Control, GPS, monitoring, or construction surveying
- Survey mapping, GIS / LIS, photogrammetry

CATEGORY E:

Environmental

- Hazardous waste
- Solid waste
- Restoration/reclamation/remediation
- Air quality
- Noise
- Recycling
- Waste pond management
- Carbon sequestration and trading
- Mitigation

CATEGORY F:

Waste & Storm Water

- Wastewater collection/treatment and disposal
- Residuals management and reuse
- Graywater systems
- CSOs
- Mine tailings
- Agricultural
- Storm water management
- Erosion control

CATEGORY G:

Water Resources

- Hydraulics, hydrology
- Surface and groundwater supply development
- Treatment
- Transmission, distribution and storage
- Watershed management
- Water use reduction
- Flood risk management
- Climate adaptation
- Coastal and eco-system restoration
- Locks/dams/water control structures
- Irrigation

CATEGORY H:

Transportation

- Highways
- Rail
- Airports
- Marine/ports
- Public transit
- Intermodal facilities

CATEGORY I:

Special Projects

- Safety and security
- Corrosion protection/cathodic protection
- Program and construction management
- Land development
- Trenchless technologies/directional boring
- Recreational facilities
- Subsurface engineering

CATEGORY J:

Small Projects

- Total project construction budget does not exceed \$5 million. At the entrant's discretion, except for entries in Category A, projects under \$5 million are not limited to this category.

CATEGORY K:

Energy

- Transmission and distribution
- Power generation
- Renewable energy
- Cogeneration
- Energy storage technologies
- Energy usage reduction programs
- Demand side management

CATEGORY L:

Industrial and Manufacturing Processes and Facilities

- Petrochemical
- Biotech
- Manufacturing
- Heavy industry
- Industrial waste
- Materials handling
- Mining, metallurgy, mineralogy

HONOR AWARD will be given to all projects at judges' discretion and receiving the minimum score of 70 and has not received a Higher Award.

Recognition: GRAND CONCEPTOR winners will receive **two (2) inscribed crystal awards** - one for the firm and one for the client / owner. GRAND, HONOR & SMALL FIRM AWARD winners will receive **two (2) inscribed awards** - one for the firm and one for the client/owner.

PUBLICITY

The public relations and marketing value of participation in the ACEC/MO Engineering Excellence Awards program is substantial. All winners will be highlighted in ACEC/MO's newsletter as well as the ACEC/MO website. ACEC/MO staff will contact local media to announce winners and their awards. Through state efforts, display panels can be exhibited in city administrative buildings, universities, shopping centers, and office buildings. These activities enhance direct business development benefits for award winners. Further benefits are gained through feature stories presented in firm brochures, newsletters, or other publications.

IMPORTANT INFORMATION FOR ENTRANTS

In conjunction with an ACEC/MO goal to promote the essentiality of engineering, we strongly encourage that all project entries, no matter the category, also highlight an emphasis on the project's direct benefits to the public.

EXAMPLES INCLUDE:

- **Water Resources:** The number of gallons of clean water that will result from the project and the potential impact.
- **Resiliency:** Efforts to protect X number of people from the impact of rising sea levels and floods.
- **Climate Change:** Examples of how much the project will reduce tons of carbon into the atmosphere, thus also reducing a project's footprint.
- **Transportation:** Examples of reduced congestion and improved safety; improve previously restricted community access; and reduced commuting time.

PREPARING YOUR ENTRY

This section describes all required submission materials for entering the 2026 ACEC/MO Engineering Excellence Awards project competition. All materials must be submitted exactly as designated below. Digital files must be PC-compatible and appropriate to the information being submitted (i.e., Microsoft Word for text, high resolution JPEGs, photos or other images, PowerPoint, Adobe PDFs, etc.).

If the submission does not meet the requirements listed, it may be disqualified. If any part of an entry does not meet requirements listed, that portion of the entry may not be presented for judging. **Please follow the guidelines.**

No reference to other awards is permitted in your submitted materials.

ACEC/MO recommends joint-award submissions whenever multiple firms collaborate on the same project.

(All materials submitted for judging become the property of ACEC/MO and may be used in ACEC/MO publications.)

SUBMISSION REQUIREMENTS

The following **two components must be submitted** with the ACEC/MO EEA competition entry:

- I. **Official Electronic Entry** - all submission materials must be submitted online through ACEC/MO's Project Submission Portal - <https://www.acecmo.org/engineering-excellence>
- II. **Entry Fee**

****NOTE: No QR Codes or embedded links are permitted in any portion of an award submission.****

I. OFFICIAL ELECTRONIC ENTRY

All project information shall be submitted electronically. Each document must be uploaded separately through ACEC/MO's Awards Submittal Portal. The electronic entry must contain all of the following items:

1 OFFICIAL ENTRY FORM: Complete the Official Entry Form on the last page of the ACEC/MO Call for Entries. The completed entry form must be signed by both the entrant and the client/owner (senior executives / officials) stating that the submitted project was substantially completed and ready for use between Nov. 1, 2023 and Oct. 31, 2025. Electronic signatures are accepted. This form will then need to be uploaded as part of the electronic project submission. *Specifications: PDF format.*

2 CLIENT/OWNER LETTER (1 page max.): Letter addressed to ACEC National on your letterhead describing the relationship of the client/owner and entrant in the development of the project, the project is ready to use, and how the entrant's contribution exceeded the client/owner's needs. The letter must be signed by the project's client. *Specifications: PDF format.*

3 EXECUTIVE SUMMARY (1 page max.): Overview of project. Describe the problem and solution. Project title and entry category must appear at the top of the page. *Specifications: 8.5" x 11"; 1" side margins; single-spaced text; 12 pt. minimum size font; PDF format.*

4 PROJECT DESCRIPTION (6 pages max.): Tell the story of the project. Address items a, b, c, and d as listed below. Project title, entry category, and page number must appear at the top of each page. Entrants may use text, photos, graphics, or charts as needed. Do not reference other awards the project has won. *Specifications: 8.5" x 11"; 1" side margins; single-spaced text; 12 pt. minimum size font; PDF format.*

Text must include all of the following information, including budget information and summary (**properly identify 1, 2, 3, 4, & 5 as listed in the Project Description for judging**):

- 1) **ROLE OF ENTRANT'S FIRM** in the project.
- 2) **ROLE OF OTHER CONSULTANTS** participating in the project.
- 3) **ENTRANT'S CONTRIBUTION TO THE PROJECT:** A brief description of the entrant's contribution addressing each of the following Rating Guidelines (refer to "**Rating Guidelines & Definitions**" on page 2):
 - Uniqueness and / or innovative application of new or existing techniques.
 - Future value to the engineering profession and enhanced public awareness / enthusiasm of the role of engineering.
 - Social, economic, and sustainable development considerations.
 - Complexity.
 - Successful fulfillment of client / owner needs.
- 4) **BUDGET INFORMATION:**
 - Include total budgeted project construction cost and total actual project construction cost.
 - Include the entrants portion of the total budgeted project construction cost and of the total actual project construction cost.
 - Scheduled and actual project completion dates (as indicated on the Official Entry Form).



ACEC/MO 2026 EEA RULES

REMINDER: These costs are not engineering fees—they are the total of the construction costs both budgeted and actual for the work the firm provided.

EXAMPLE: If the total project budgeted construction cost is \$400,000,000.00 and the firm did 100% of the work, then the entrants portion of the total budgeted project construction cost is \$400,000,000.00. The same logic applies for actual costs.

(Budgeted and/or actual cost may not apply to some studies in Category A and some projects in Category D)			
Completion/Use Dates:	Scheduled: 5/29/24	Actual: 5/29/24	
Construction Costs:	Total Construction Budgeted: 27 million	Total Construction Actual: 27 million	
	Entrant's Portion of Total Construction Budgeted: 27 million	Entrant's Portion of Total Construction Actual: 27 million	

5) **SUMMARY:** Describe in layman's terms why this project is worthy of special recognition (word count between 100 - 500 words). Explain all factors that exhibit the project's uniqueness and complexity, such as innovative engineering, challenges faced and overall social impact.

NOTE: This summary will provide the basis for all ACEC/MO publicity on the project.

5 **KEY PARTICIPANTS:** List the key participants on the project including firm name, address, phone number, website, and email address of each participant. Include contractors, subcontractors, other engineers, architects and designers significantly involved in the project. *Specifications: 8.5" x 11"; Excel file.*

6 **PHOTOS OR GRAPHICS:** Six (6) different photos or graphics (one per page) with captions describing the subject matter (refer to "Image Guidelines" in the next column). Captions shall begin with: Photo 1, Photo 2, etc. Six (6) photos or graphics are required: three (3) showing the completed project and three (3) depicting the project development in progress. No text is permitted on the photos. *Specifications: JPEG file; RGB format; High Resolution (300 dpi).*

Photo Captions: Separate document in Word format with captions for all 6 photos. Captions shall begin with Photo 1, Photo 2, etc. *Specifications: Word file.*

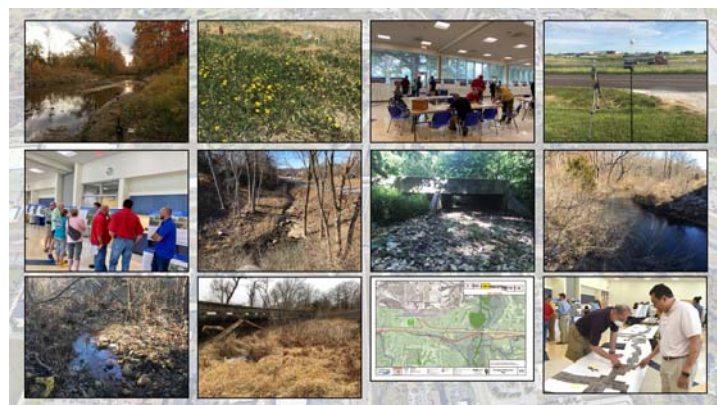


Image Guidelines:

Because the images will be projected on a large screen during the Awards Banquet, it is very important to submit sharp, high-quality, high-resolution images.

Three of the photographs must show the completed project and provide the highest level of visual impact for publicity. Three of the photographs must display the planning, startup, and/or construction phases of the project.

7 **MEDIA LIST:** Include email addresses of local newspapers, TV, radio stations and other media outlets where your project can be highlighted. If you prefer to handle all local publicity for the project, include a statement to that effect. *Specifications: Excel file; 8.5"x11" or 11"x17".*

8 **POWERPOINT PRESENTATION:** PowerPoint file, containing 7 slides including one (1) title slide with the ACEC EEA logo, firm name, project name, project location: city and state, followed by six (6) slides which include photos 1 through 6 (same photos as Item 6 in previous column). The caption must be included with each photo. This presentation will be used by the judges as part of their evaluation. Do not include sound, transition effects, animation, preset timing, or slide show sequencing. A sample PowerPoint presentation is downloadable from the ACEC/MO website.

9 **SUPPLEMENTARY REPORT:** Include a supplementary report containing the findings portrayed with text, graphs, or photos, as needed. *Specifications: PDF format.*

NOTE: This report is **ONLY** required for Category A submittals.

III. ENTRY FEE

You must submit an entry fee payment of **\$450.00** for ACEC/MO members / \$1,200 for non-ACEC/MO members). **All payments must be made by check payable to ACEC/MO.** If you want to pay your entry fee by credit card, please contact Dawn Danison at DawnHill@acecmo.org to get that invoice.

SHIPPING INFO & QUESTIONS

Send the \$450 Entry Fee to:

ACEC Missouri
Attn: EEA Competition
3432 W. Truman Blvd., Ste. 110
Jefferson City, MO 65109

The electronic submission and the \$450 entry fee must be received by October 22, 2025.

Questions?? Call Dawn Danison at (573) 634-4080 or email at DawnHill@acecmo.org. Go to the ACEC/MO website (www.acecmo.org) for more information on the competition.

ACEC/MO OFFICIAL ENTRY FORM

Furnish all information requested below for each entry (signatures by the submitting firm(s) and the client(s)/owners(s) are required. Firm, project, and client/owner's name should be typed as they are to appear on the award. Please limit the project name to 45 characters. A check for **\$450 per entry** for ACEC/MO members (\$1,200 for non-ACEC/MO members) **must be submitted** to the ACEC/MO address on page 6.

ABOUT THE PROJECT

Project Name _____ (limit to 45 characters)

Project Category (check one):

- ☐ A. Studies, Research, and Consulting Engineering Services
☐ B. Building/Technology Systems
☐ C. Structural Systems

- ☐ D. Surveying and Mapping Technology
☐ E. Environmental
☐ F. Waste and Storm Water

- ☐ G. Water Resources
☐ H. Transportation
☐ I. Special Projects
☐ J. Small Projects

- ☐ K. Energy
☐ L. Industrial and Manufacturing Processes and Facilities

Project Location (City): _____ State: _____

What was the Entrant's Role in the project?: _____

ABOUT THE PROJECT'S SCHEDULE AND BUDGET

Budgeted and/or actual costs may not apply to some studies in Category A and some projects in Category D.

With the exception of Category A and some Category D projects, **costs reflected below are always construction costs and are NOT ENGINEERING FEES.** If your firm was responsible for the entire engineering-design of the project, then the *Entrant's Portion of the Total Construction Budget* amount and the *Entrant's Portion of the Total Construction Actual Cost* amount will be the same as the *Total Construction Budget* amount and *Total Construction Actual Cost* amount.

If your firm was not responsible for the entire engineering-design of the project, then the *Entrant's Portion of the Total Construction Budget* amount and the *Entrant's Portion of the Total Construction Actual Cost* amount should be part of the total project construction cost your firm was responsible for (i.e., a mechanical engineering firm was responsible for \$12M of a total Construction budget of \$40M. \$12M is the *Entrant's Portion of the Total Construction Budget*. \$40M is the *Total Construction Budget*.)

Completion/Use Dates: Scheduled: _____ Actual: _____

Category A & D Costs: Budgeted \$: _____ Actual \$: _____

Construction Costs: Total Construction Budget \$: _____ Total Construction Actual \$: _____

Entrant's portion of Total Construction: Budget \$: _____ Entrant's portion of Total Construction Actual \$: _____
(Note: This is not engineering fees.) (Note: This is not engineering fees.)

ABOUT THE FIRM(S) SUBMITTING THE PROJECT

Entering Firm(s): _____

Firm CEO: _____

Firm Representative: _____ ☐ Please check this box if this person is to receive ALL EEA correspondence only.

Address (no P.O. Box): _____ City: _____ State: _____ Zip: _____

Phone: _____ Cell: _____ Email: _____

I hereby authorize submission of this project into ACEC Missouri's Engineering Excellence Awards Project Competition.

Senior Executive/Principal: _____ ☐ Please check this box if this person is to receive ALL EEA correspondence only.

Signature: _____ Date: _____

Address (no P.O. Box): _____ City: _____ State: _____ Zip: _____

Phone: _____ Cell: _____ Email: _____

Marketing Coordinator: _____ ☐ Please check this box if this person is to receive ALL EEA correspondence only.

Signature: _____ Date: _____

Address (no P.O. Box): _____ City: _____ State: _____ Zip: _____

Phone: _____ Cell: _____ Email: _____

ABOUT THE CLIENT/OWNER(S) OF THE PROJECT

Client/Owner(s): _____

I believe the work of the engineer meets the intended uses and expectations for the project and hereby grant permission to enter this project in the ACEC/MO Engineering Excellence Awards project competition, and authorize publication of images and details of the project. I confirm that the project was ready for use between November 1, 2023 and October 31, 2025.

Client/Owner Representative: _____

Title: _____ Signature: _____ Date: _____

Address (no P.O. Box): _____ City: _____ State: _____ Zip: _____

Phone: _____ Cell: _____ Email: _____

AMERICAN COUNCIL OF ENGINEERING COMPANIES OF MISSOURI

3432 W. Truman Boulevard, Suite 110 ■ Jefferson City, MO 65109 ■ 573-634-4080 ■ DawnHill@acecmo.org